



# Service Information

## Service Information From Supplemental Instructions

### 11.1 Service Location

The Service Area will be located at Port of Shelton Inactive Runway, 21 W Sanderson Way, Shelton, WA (AKA PSIR.) Access to the service park will be from 1500, April 10, 2025 until 2300, April 13, 2025.

### 11.2 Service Vehicle Entry

Only official competing vehicle, service vehicle, and any support vehicles than can fit in the area allotted service area. Roads must be kept clear for rally traffic and emergency access. All service vehicles will display the required "service decal" in the upper right-hand corner of the windshield.

Any person associated with a team entering the Service Area must have the proper event wrist bands or

they will be denied entry.

### 11.3 Service Sizes

Service spaces will be a minimum of 30 feet x 50 feet and are pre-assigned. There is no charge for over-sized spaces. Teams MUST request over-sized spaces via e-mail, at least 1 week prior to the event. All service requests should be sent to the Chief of Service.

Last day to request oversize/additional/particular service spots is Friday, April 4, 2024

### 11.4 Trailer Parking

Unless a team is servicing from their trailer, trailers are not allowed in service and will be parked in the assigned area. No exceptions! The service captain will inform teams when they arrive to service were to park the trailers.

### 11.5 Service Area Speed Limit

Competitors and their service crew members are required to drive in a safe manner at all times based on congestion and foot traffic in the Service Area. Any violation of this will result in a penalty to the competing vehicle that the violator is registered with.

### 11.6 Tarps

Tarps/spill cloths MUST be placed under cars for all servicing operations. If a service space is not cleaned after the event the assigned team will be subject to a \$150.00 fine

### 11.7 Fueling

All fueling operations **MUST** be accompanied by a dedicated team member holding an operational fire extinguisher during the entirety of the fueling operation! Refer to Section 7 for additional fueling information.

### **11.8 Retrieving Vehicle on Stage**

Service crews **MUST** notify the Chief of Service when leaving service area to retrieve a vehicle. If Chief of Service is not in any of the service controls, contact by phone 253-310-2697.

### **11.9 Stage Access**

The roads that are used for Special Stages are on properties that Green Diamond has restricted public access and requires the gates to be locked after completion of a Special Stage. When Net Control authorizes the closure of a Special Stage, after taking into consideration start time plus the maximum allowable lateness of the last scheduled competitor, and ensuring that all vehicles, competitors, crewmembers, press, stage crewmembers, and anyone else is accounted for, the Stage

Captain will close the stage. If there are vehicles that require assistance or retrieval the sweep crew will make a reasonable effort to extract or assist in getting the vehicle to a place where the vehicle can be recovered. If a vehicle cannot be recovered before the Stage Captain closes the road and locks the gates, arrangements for access shall be made by contacting Ken Quale – 253-310-2697.

## **Medical Emergency Services: (if its an emergency call 911)**

Mason General Hospital

Address: 901 Mountain View Drive Shelton, WA 98584

Phone#: 1-360-426-1611

MultiCare Capital Medical Center

Address: 3900 Capital Mall Dr SW, Olympia, WA 98502

Phone#: (360) 754-5858

Providence St. Peter Hospital

Address: 413 Lilly Rd NE, Olympia, Wa 98506

Phone# (360) 491-491-9480

## **Local Part Stores:**

O'Reilly Auto Parts

301 E Wallace Kneeland Blvd, Shelton, WA 98584

Saturday 7:30 AM–9 PM

Sunday 8 AM–8 PM

NAPA Auto Parts - Westbay Auto Parts

1538 Olympic Hwy N, Shelton, WA 98584

Saturday 8 AM–6 PM

Sunday 9 AM–5 PM

Cut Rate Auto Parts

128 S 1st St, Shelton, WA 98584

Saturday 8 AM–8 PM

Sunday 9 AM–6 PM

## **Important GPS Coordinates**

Saturday Parc Expose - 47.21294, -123.10159

Sunday Parc Expose - 47.24517, -123.14844

Service - 47.24168, -123.14948

### **Schafer:**

Start Gate: 47.23966, -123.5153

TC1,3: 47.2415, -123.51744

Start Line: 47.2381, -123.52074

VC Start: 47.21016, -123.5463

VC End: 47.20854, -123.54709

Flying Finish: 47.21897, -123.52321

Stop: 47.22355, -123.52306

Stop Gate: 47.22727, -123.5129

### **Deckerville 43**

Start Gate: 47.2142, -123.51483  
TC2,4: 47.21531, -123.51441  
Start Line: 47.21678, -123.51195  
Spectator: 47.16858, -123.47867  
Spectator Gate: 47.15208, -123.46576  
Flying Finish: 47.14328, -123.4727  
Stop: 47.14384, -123.46773  
Stop Gate: 47.14392, -123.46734

### **Wildcat**

Start Gate: 47.10759, -123.34808  
TC5,6: 47.08019, -123.31886  
Start Line: 47.08052, -123.31563  
Spectator: 47.13446, -123.23983  
Spectator Gate: 47.13529, -123.25358  
Flying Finish: 47.16323, -123.19613  
Stop: 47.16388, -123.20479  
Stop Gate: 47.16415, -123.20473

### **The Stillwater**

Start Gate: 47.23472, -123.34204  
TC7,9: 47.22403, -123.34954  
Start Line: 47.22062, -123.35047  
Spectator: 47.1975, -123.29345  
Spectator Entrance Gate: 47.18795, -123.26985  
Spectator Exit Gate: 47.18673, -123.27168  
Flying Finish: 47.18013, -123.32134  
Stop: 47.17888, -123.31584  
Stop Gate: 47.16101, -123.28679

### **Dayton**

Start Gate: 47.18749, -123.26912  
TC8,10: 47.18698, -123.26359  
Start Line: 47.1878, -123.26209  
Flying Finish: 47.20062, -123.17613  
Stop: 47.20141, -123.17115  
Stop Gate: 47.2015, -123.16862

## **Powerstage**

Start Gate: 47.24178, -123.29335

TC<sup>11,12</sup>: 47.2709, -123.31031

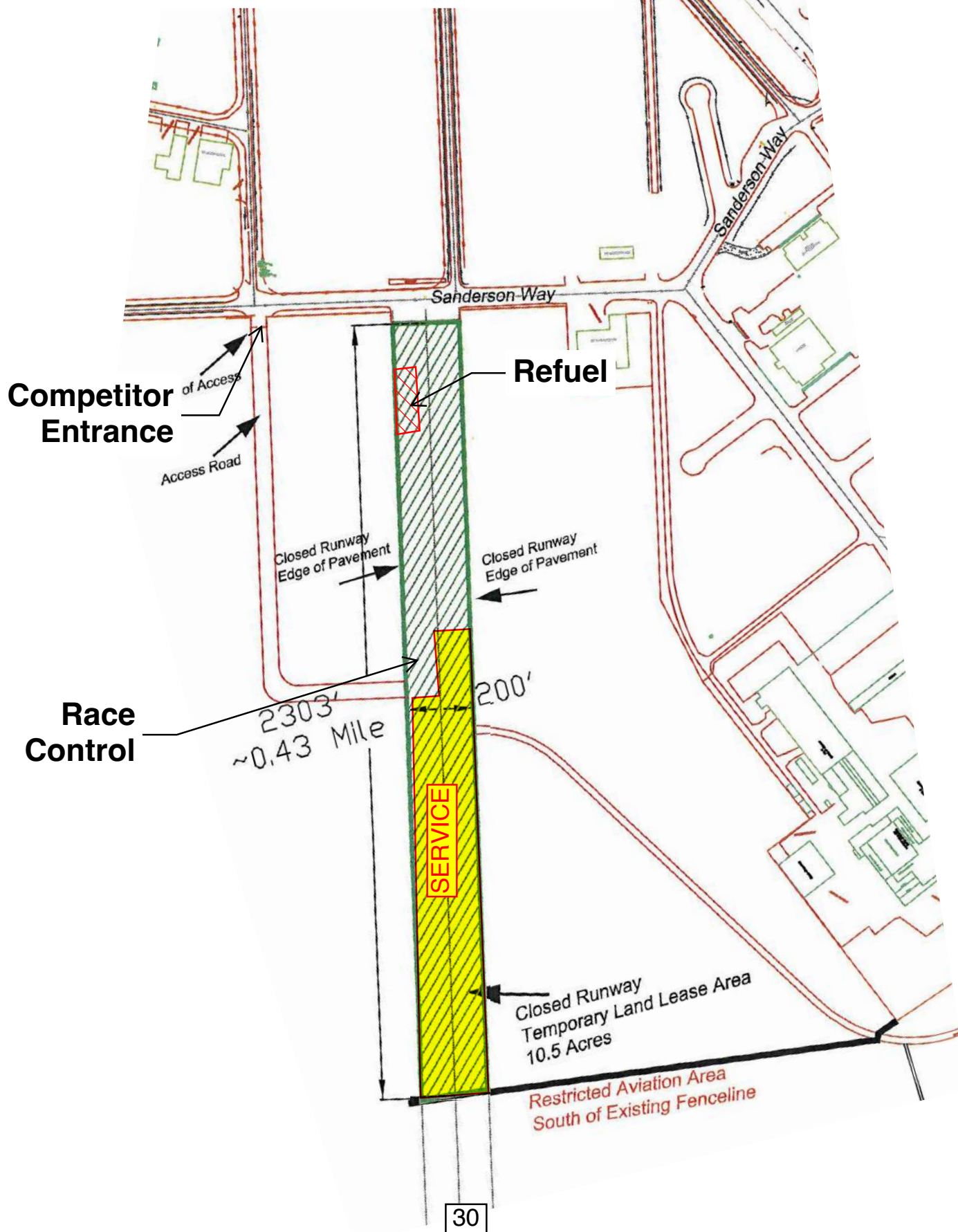
Start Line: 47.27282, -123.30968

Flying Finish: 47.29578, -123.25665

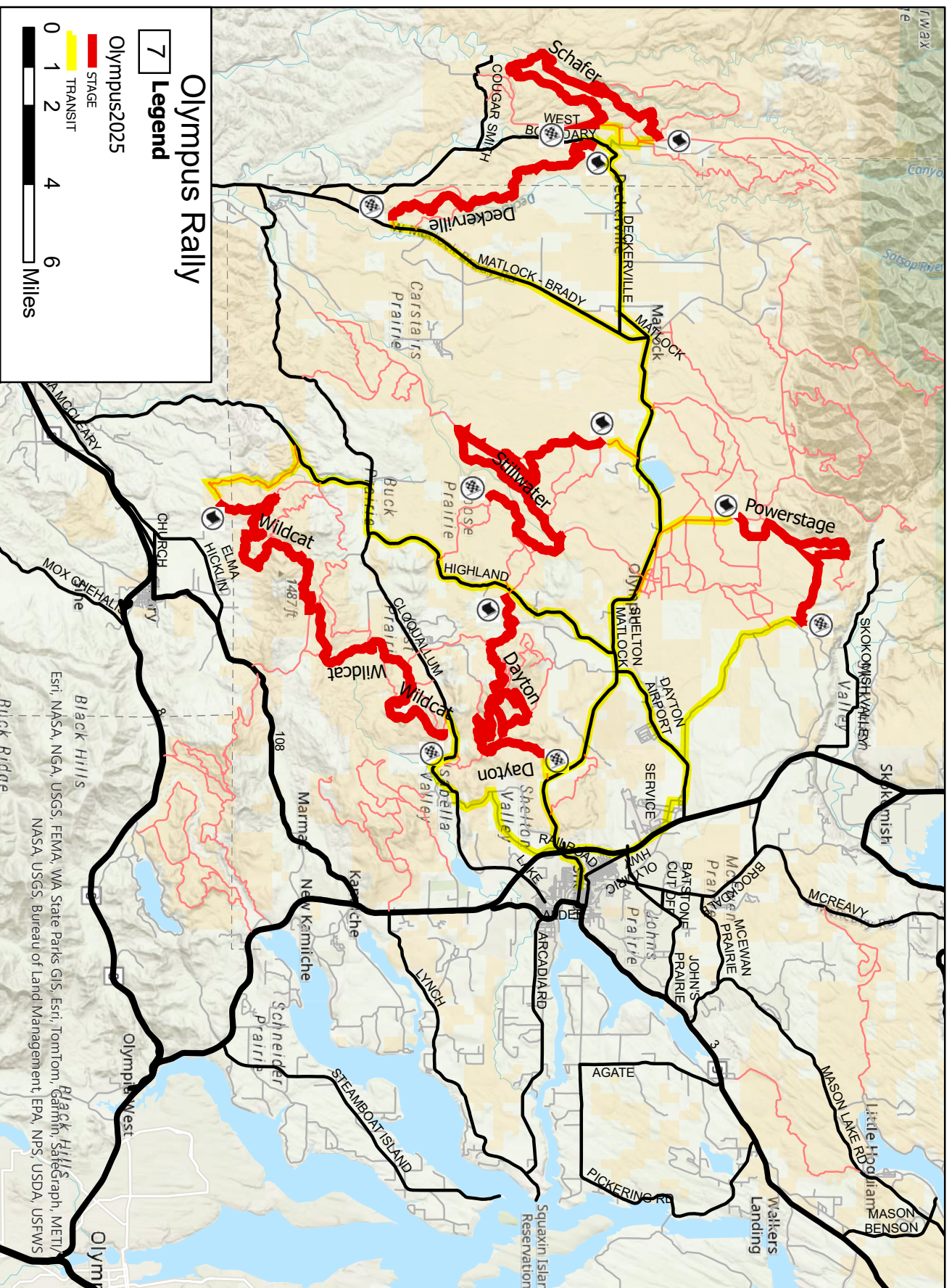
Stop: 47.29376, -123.25217

Stop Gate: 47.29376, -123.25217

# SERVICE MAP









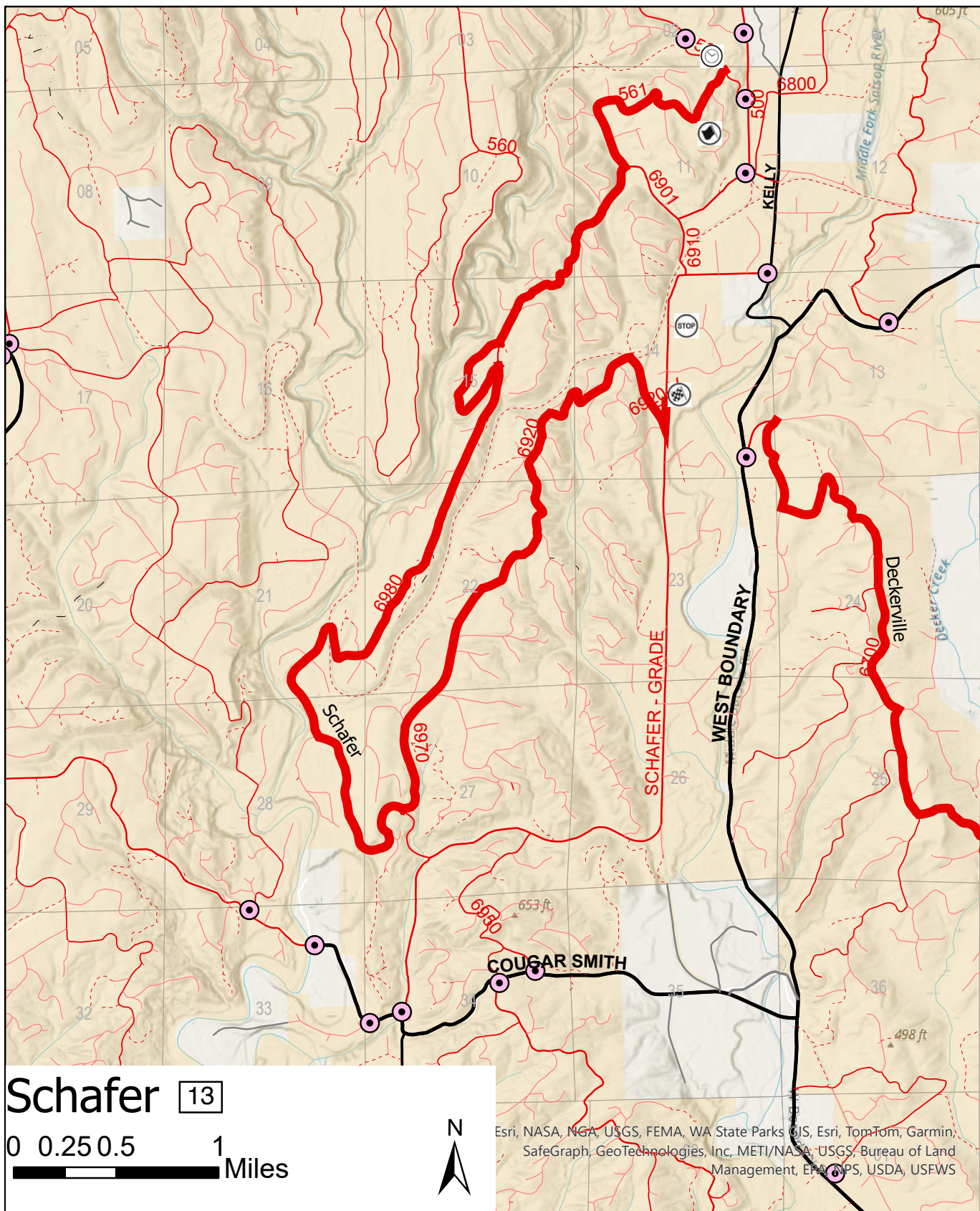


ENTER HERE ONLY

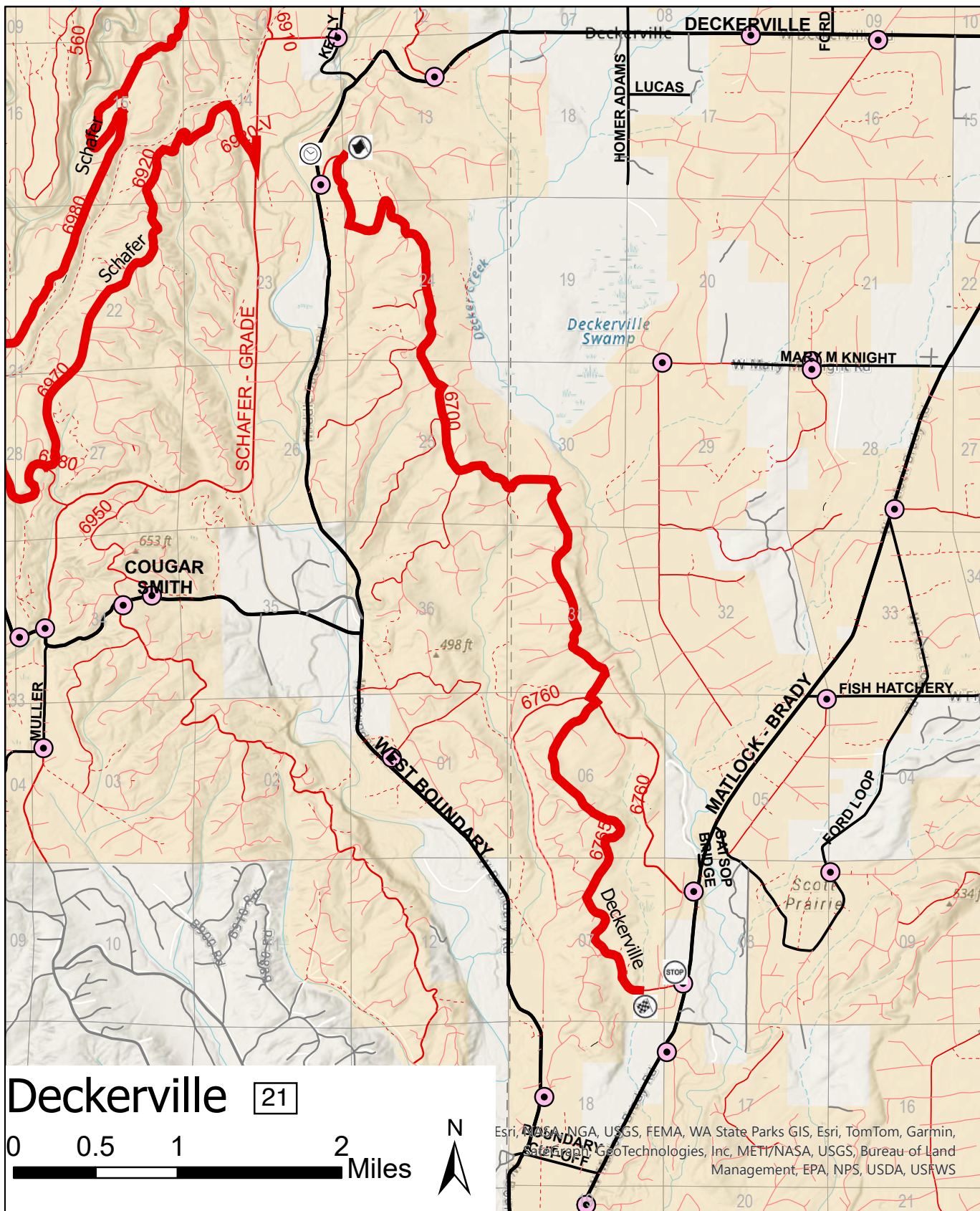
PARC EXPOSE ON RAILROAD AVE.

DOWNTOWN SHELTON WASHINGTON

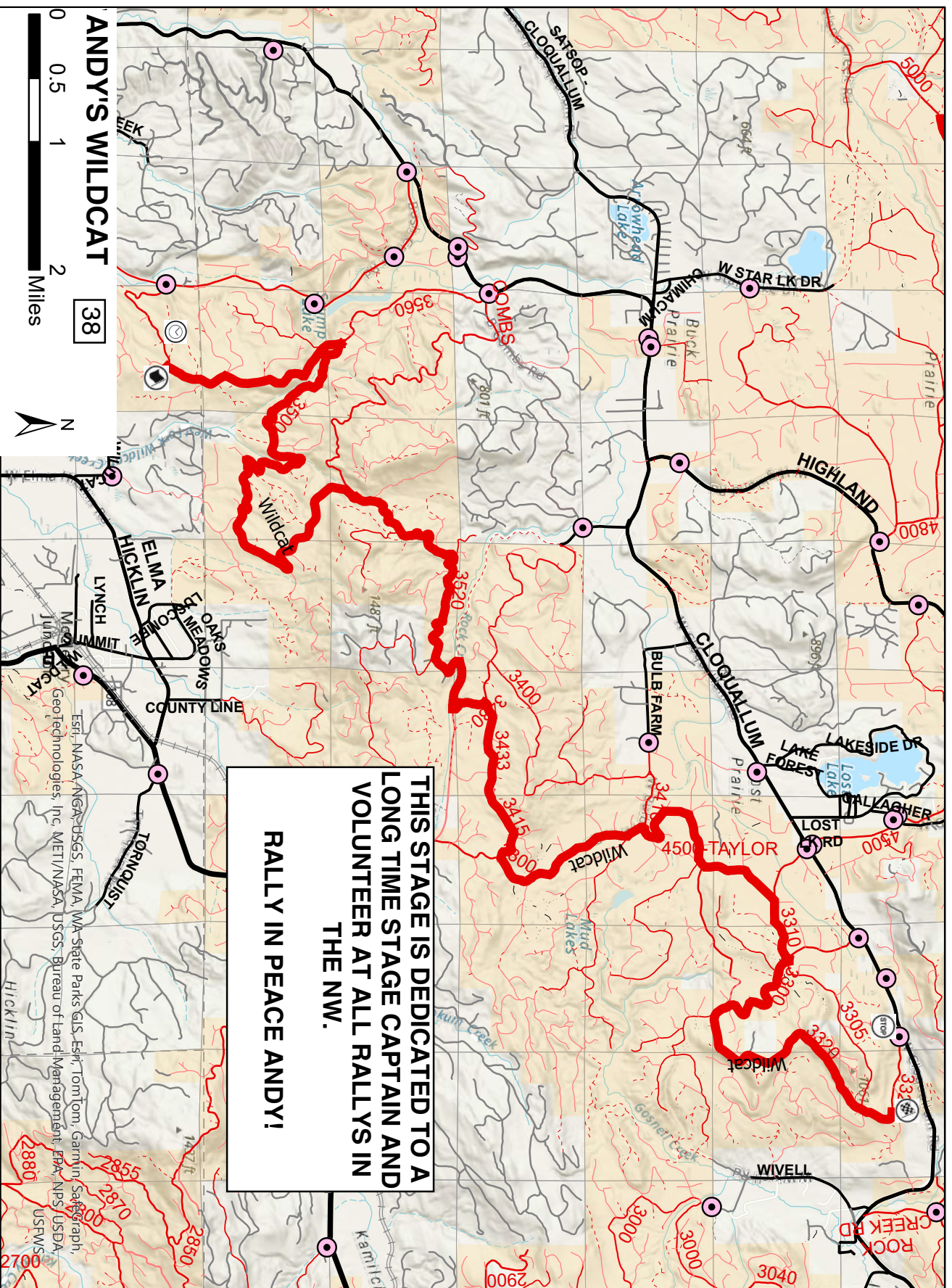














# SUNDAY PARC EXPOSE MAP

