

2025 Subaru of Puyallup Olympus Rally Presented by Dirtfish

Recce Instructions



Recce Times

Recce for all stages starts at 0700 and ends at 2000. Individual stages are open for recce according to the following schedule:

This schedule is subject to change dependent upon last minute changes to logging and other landowner activities on the stage roads. Any changes to these times will be announced via Bulletin one week before the rally.

Competitors are only permitted on the stage roads and inside the landowner's gates for those roads during the designated times. Do not drive past the gate to the start of a stage before the designated start time for recce on that stage road. Do not start recce of any stage road with insufficient time to reach the end of that road before the end of the designated recce time for that stage.

Recce Rules

During recce, teams participating in recce are reminded that they must:

- a) comply with ARA RCR 1.2.1
- b) not exceed the posted speed, or 30 mph, if not posted
- c) be alert to the possibility of oncoming traffic at ANY time
- d) not do anything during recce that would reflect poorly on rally
- e) comply with ARA Bulletin 2025-3 and use the RS Lite smartphone app during recce

Behavior During Recce

Recce and poor behavior of competitors during recce are among the largest risks to our continued access to the stage roads. Be respectful of the communities through which our event travels.

Sections of road designated as Quiet Zones in the Route Book are also to be treated as Quiet Zones during recce.

Recce Route

There is no defined recce route. Teams plan their own recce route. More than two passes of each stage are permitted as long it occurs during the recce times listed above.

Take care when using Google Maps or other navigation to find routes between stages different from what is described below. Many of these services provide inaccurate directions via roads that once existed or were once open but now have gates or go through private property.

Teams may follow their own route during recce but are reminded that during competition they must follow the route indicated in the route book (RCR 6.4.7).

Stage Notes

Andy's Wildcat

The route of the Andy's Wildcat stage road is mostly the Wildcat stage used in the 2023 Olympus Rally. The differences are that the start is about a mile past where it has been in the past and there is a new section of road that bypasses the Bulb Farm Road spectator area.

The stage is named after stage captain Andy Newell, who recently passed away.

Dayton

The route of the Dayton stage road mostly follows the route of the Dayton stage used in the 2019 Olympus Rally but run in the opposite direction.

Deckerville 43

The route of the Deckerville 43 stage is the same as the Deckerville 43 stage used in the 2024 Olympus Rally.

PowerStage

The route of the PowerStage stage road is a new combination of roads that have been used in various Nahwatzel stages in past iterations of the Olympus Rally.

Schafer

The route of the Schafer stage road mostly follows the Schafer Long stage used in the 2022 Olympus Rally. The differences are that the start and finish are in different locations and a short detour introduced in the 2024 Olympus Rally is used.

The Stillwater

The route of The Stillwater stage road is a new combination of roads that have been used in various Stillwater stages in past iterations of the Olympus Rally.

Recce Notes

Once you leave Shelton, the only sources for fuel are the Matlock Store and the Dayton Store. There is food at the Matlock Store, Lake Nahwatzel Resort, Dayton Store, and Tuggs & Chuggs/Buck's Prairie Store (described below).

Depending on your mobile phone provider, your cell phone may not have phone and/or data coverage in the vicinity of the stage roads and transits. Verizon has better coverage in the area than AT&T or T-Mobile.

On recce day, sunrise will be at 6:28 and sunset will be at 19:57 (twilight ends at 20:27).

If you need to contact a rally official during recce, call Alan Perry (206-499-5501).

Referenced Locations

Cook Reload

This is a large, open space near the start of the Schafer stage. Last year, it was the location of the remote refuel and tire change zones.

Google Maps Coordinates: 47°14'13.5"N 123°30'53.8"W

Dayton Store

This is a small convenience store and gas station. It is along the transit between Sanderson Field and most of the other stage roads. It is open from 0800 through 2100. The address is 7480 W Shelton Matlock Road.

Google Maps Coordinates: 47°13'36.9"N 123°13'54.7"W

Lake Nahwatzel Resort

The resort has a restaurant on Shelton Matlock Road near Nahwatzel Lake and just east of the start of the The Stillwater stage road. It is open from 1200 through 2100 on recce day. The address is 12900 W Shelton Matlock Road.

Google Maps Coordinates: 47°14'23.5"N 123°19'41.1"W

Matlock Store

The Matlock Store is located west of the start of the Stillwater stage road, between there and the Deckerville 43 and Schafer stage roads. In addition to fuel, it has a small grocery store and some prepared, "convenience store" food.

Google Maps Coordinates: 47°14'19.0"N 123°24'27.1"W

Sanderson Field

Also referred to a PSIR (Port of Shelton Inactive Runway). This is the location for check-in for Recce as well as Rally HQ and the Service Area. The address is 249 W Sanderson Way, Shelton.

Google Maps Coordinates: 47°14'44.5"N 123°08'55.7"W

Tuggs & Chuggs / Buck's Prairie Store

Tuggs & Chuggs is a tavern, serving cold sandwiches, pizza and maybe hamburgers, and it is next to Buck's Prairie Store. They are on the route to the Andy's Wildcat stage, on Cloquallum Road, just west of the junction with Highland Road. The store is open from 1000 through 1800 and the tavern is open from 1200 through after the close of recce. The address is 13443 W Cloquallum Road.

Google Maps Coordinates: 47°08'04.6"N 123°18'44.4"W

Estimated Recce Transit Times

In order to assist with recce planning, estimated times and distances to travel from the finish of one stage to the start of another (as well as to and from Sanderson Field) are provided below.

From: To:	Sanderson Field	Andy's Wildcat Finish	Dayton Finish	Deckerville 43 Finish	PowerStage Finish	Schafer Finish	The Stillwater Finish
Andy's Wildcat Start	40 min 20.4 miles	30 min 12.7 miles	40 min 19.6 miles	40 min 19.6 miles	45 min 24.3 miles	50 min 26.8 miles	30 min 12.1 miles
Dayton Start	20 min 8.7 miles	15 min 10.1 miles	15 min 7.9 miles	30 min 20.0 miles	25 min 12.6 miles	30 min 19.3 miles	15 min 5.1 miles
Deckerville 43 Start	30 min 20.4 miles	40 min 28.5 miles	30 min 19.6 miles	20 min 12.5 miles	40 min 24.3 miles	5 min 2.2 miles	40 min 23.5 miles
PowerStage Start	25 min 14.7 miles	30 min 19.0 miles	20 min 10.1 miles	25 min 15.8 miles	30 min 18.6 miles	25 min 15.1 miles	30 min 14.1 miles
Schafer Start	35 min 21.0 miles	45 min 29.1 miles	35 min 20.2 miles	25 min 13.1 miles	40 min 24.9 miles	5 min 1.8 miles	40 min 24.1 miles
The Stillwater Start	20 min 11.7 miles	30 min 19.8 miles	20 min 10.9 miles	20 min 11.6 miles	25 min 15.6 miles	25 min 10.9 miles	30 min 14.8 miles
Sanderson Field	-/-	30 min 18.1 miles	10 min 5.6 miles	35 min 21.3 miles	15 min 6.7 miles	40 min 20.6 miles	30 min 13.2 miles

Estimated Stage Recce Time

Based on an ideal recce speed of 25 mph and rounding up in 5 minute increments, the estimated time to do reconnaissance of each stage is as follows.

	Andy's Wildcat	Dayton	Deckerville 43	PowerStage	Schafer	The Stillwater
Stage Length	17.43 miles	12.00 miles	<u>7.36</u> miles	6.30 miles	9.88 miles	14.20 miles
Recce Time	45 min	30 min	20 min	20 min	25 min	35 min

Recce Transit Directions

Directions from the finish of each stage to the start of any (almost) other (as well as to and from Sanderson Field) are provided here. Distances are approximations. Route book references are near where the end of the recce transit directions correspond to the route book.

Sanderson Field to Dayton Start:	<p>Proceed to Dayton Airport Road (via Extension Road) and turn Left. 4.5 miles</p> <p>Turn Right onto Shelton Matlock Road. 0.5 miles</p> <p>Turn Left onto Highland Road. 3.4 miles</p> <p>Turn Left at the delta junction, go through the gate and proceed to Dayton Start. 0.3 miles</p> <p>Left turn is Route Book Page 63 Instruction 10 from the opposite direction</p>
Sanderson Field to Deckerville 43 Start:	<p>Proceed to Dayton Airport Road (via Extension Road) and turn Left. 4.5 miles</p> <p>Turn Right onto Shelton Matlock Road. 9.5 miles</p> <p>Continue Straight as road becomes Matlock-Deckerville Road. 1.0 miles</p> <p>Bear Right as road becomes Deckerville Road. 3.3 miles</p> <p>Continue Straight as road becomes Boundary Road. 1.9 miles</p> <p>Turn Left onto the 6700 Road and proceed to Deckerville 43 Start. 0.2 miles</p> <p>Left turn is Route Book Page 20 Instruction 5</p>
Sanderson Field to PowerStage Start:	<p>Proceed to Dayton Airport Road (via Extension Road) and turn Left. 4.5 miles</p> <p>Turn Right onto Shelton Matlock Road. 7.5 miles</p> <p>Turn Right onto gravel road (Northwest Forest Link) 0.1 miles</p> <p>Turn Left at T junction and proceed to PowerStage Start. 2.5 miles</p> <p>Left at T junction is Route Book Page 85 Instruction 9</p>
Sanderson Field to Schafer Start:	<p>Proceed to Dayton Airport Road (via Extension Road) and turn Left. 4.5 miles</p> <p>Turn Right onto Shelton Matlock Road. 9.5 miles</p> <p>Continue Straight as road becomes Matlock-Deckerville Road. 1.0 miles</p> <p>Bear Right as road becomes Deckerville Road. 3.3 miles</p> <p>Continue Straight as road becomes Boundary Road. 1.1 miles</p> <p>Turn Right onto Kelly Road. 0.9 miles</p> <p>Turn Left onto unnamed gravel road. 0.1 miles</p> <p>Turn second Right into Cook Reload. 0.4 miles</p> <p>Turn Left onto the 560 Road and proceed to Schafer Start. 0.2 miles</p> <p>Left turn is Route Book Page 11 Instruction 18</p>

Sanderson Field to The Stillwater Start:	<p>Proceed to Dayton Airport Road (via Extension Road) and turn Left. 4.5 miles</p> <p>Turn Right onto Shelton Matlock Road. 6.2 miles</p> <p>Turn Left onto the 5500 Road and proceed to The Stillwater Start. 1.0 miles</p> <p>Left turn is Route Book Page 54 Instruction 9</p>
Sanderson Field to Andy's Wildcat Start:	<p>Proceed to Dayton Airport Road (via Extension Road) and turn Left. 4.5 miles</p> <p>Turn Right onto Shelton Matlock Road. 0.5 miles</p> <p>Turn Left onto Highland Road. 7.9 miles</p> <p>Turn Right onto Cloquallum Road. 1.2 miles</p> <p>Bear Left to stay on Cloquallum Road. 2.6 miles</p> <p>Cross Cloquallum Creek three times</p> <p>CAUTION! Fast highway and easy-to-miss turn</p> <p>Turn Left onto Bush Creek Road and proceed to Andy's Wildcat Start. 3.8 miles</p> <p>Left turn is Route Book Page 36 Instruction 11</p>

Dayton Finish to Dayton Start:	Continue Straight to Shelton-Matlock Road.	0.2 miles
	Turn Left onto Shelton-Matlock Road.	4.0 miles
	Turn Left onto Highland Road.	3.4 miles
	Turn Left at the delta junction, go through the gate and proceed to Dayton Start.	0.3 miles
	Left turn is Route Book Page 63 Instruction 10 from the opposite direction	
Dayton Finish to Deckerville 43 Start:	Continue Straight to Shelton-Matlock Road.	0.2 miles
	Turn Left onto Shelton-Matlock Road.	13.0 miles
	Continue Straight as road becomes Matlock-Deckerville Road.	1.0 miles
	Bear Right as road becomes Deckerville Road.	3.3 miles
	Continue Straight as road becomes Boundary Road.	1.9 miles
	Turn Left onto the 6700 Road and proceed to Deckerville 43 Start.	0.2 miles
	Left turn is Route Book Page 20 Instruction 5	
Dayton Finish to PowerStage Start:	Continue Straight to Shelton-Matlock Road.	0.2 miles
	Turn Left onto Shelton-Matlock Road.	7.2 miles
	Turn Right onto gravel road (Northwest Forest Link)	0.1 miles
	Turn Left at T junction and proceed to PowerStage Start.	2.5 miles
	Left at T junction is Route Book Page 85 Instruction 9	
Dayton Finish to Schafer Start:	Continue Straight to Shelton-Matlock Road.	0.2 miles
	Turn Left onto Shelton-Matlock Road.	13.0 miles
	Continue Straight as road becomes Matlock-Deckerville Road.	1.0 miles
	Bear Right as road becomes Deckerville Road.	3.3 miles
	Continue Straight as road becomes Boundary Road.	1.1 miles
	Turn Right onto Kelly Road.	0.9 miles
	Turn Left onto unnamed gravel road.	0.1 miles
	Turn second Right into Cook Reload.	0.4 miles
	Turn Left onto the 560 Road and proceed to Schafer Start.	0.2 miles
	Left turn is Route Book Page 11 Instruction 18	

Dayton Finish to The Stillwater Start:	Continue Straight to Shelton-Matlock Road.	0.2 miles
	Turn Left onto Shelton-Matlock Road.	9.7 miles
	Turn Left onto 5500 Road and proceed to The Stillwater Start.	1.0 miles
	Left turn is Route Book Page 54 Instruction 9	
Dayton Finish to Andy Wildcat Start:	Continue Straight to Shelton-Matlock Road.	0.2 miles
	Turn Left onto Shelton-Matlock Road.	4.0 miles
	Turn Left onto Highland Road.	7.9 miles
	Turn Right onto Cloquallum Road.	1.2 miles
	Bear Left to stay Cloquallum Road.	2.6 miles
	Cross Cloquallum Creek three times	
	CAUTION! Fast highway and easy-to-miss turn	
	Turn Left onto Bush Creek Road and proceed to Andy's Wildcat Start.	3.8 miles
	Left turn is Route Book Page 36 Instruction 11	
Dayton Finish to Sanderson Field:	Continue Straight to Shelton-Matlock Road.	0.2 miles
	Turn Right onto Shelton-Matlock Road.	2.1 miles
	Turn Left onto US-101 North.	3.0 miles
	Turn Left onto Sanderson Road.	0.3 miles
	Turn Left into Sanderson Field.	

Deckerville 43 Finish to Dayton Start:	Continue Straight to Matlock Brady Road. 250 feet Turn Left onto Matlock Brady Road. 7.2 miles Slow at School Turn Right onto Shelton-Matlock Road. 9.0 miles Turn Right onto Highland Road. 3.4 miles Turn Left at the delta junction, go through the gate and proceed to Dayton Start. 0.3 miles Left turn is Route Book Page 63 Instruction 10 from the opposite direction
Deckerville 43 Finish to Deckerville 43 Start:	Continue Straight to Matlock Brady Road. 250 feet Turn Left onto Matlock Brady Road. 6.5 miles Slow at School Turn Left onto Deckerville Road. 0.5 miles Continue Straight to stay on Deckerville Road. 3.3 miles Continue Straight onto Boundary Road. 1.9 miles Turn Left onto the 6700 Road and proceed to Deckerville 43 Start. 0.2 miles Left turn is Route Book Page 20 Instruction 5
Deckerville 43 Finish to PowerStage Start:	Continue Straight to Matlock Brady Road. 250 feet Turn Left onto Matlock Brady Road. 7.2 miles Slow at School Turn Right onto Shelton-Matlock Road. 5.8 miles Turn Left onto gravel road (Northwest Forest Link) 0.1 miles Turn Left at T junction and proceed to PowerStage Start. 2.5 miles Left at T junction is Route Book Page 85 Instruction 9
Deckerville 43 Finish to Schafer Start:	Continue Straight to Matlock Brady Road. 250 feet Turn Left onto Matlock Brady Road. 6.5 miles Slow at School Turn Left onto Deckerville Road. 0.5 miles Continue Straight to stay on Deckerville Road. 3.3 miles Continue Straight to stay on Boundary Road. 1.1 miles Turn Right onto Kelly Road. 0.9 miles Turn Left onto unnamed gravel road. 0.1 miles Turn second Right into Cook Reload. 0.4 miles Turn Left onto the 560 Road and proceed to Schafer Start. 0.2 miles Left turn is Route Book Page 11 Instruction 18

Deckerville 43 Finish to The Stillwater Start:	Continue Straight to Matlock Brady Road.	250 feet
	Turn Left onto Matlock Brady Road.	7.2 miles
	Slow for School	
	Turn Right onto Shelton-Matlock Road.	3.3 miles
	Turn Right onto the 5500 Road and proceed to The Stillwater Start.	1.0 miles
	Right turn is Route Book Page 54 Instruction 9 from the opposite direction	
Deckerville 43 Finish to Andy's Wildcat Start:	Continue Straight to Matlock Brady Road.	250 feet
	Turn Right onto Matlock Brady Road.	3.6 miles
	Turn Left onto Satsop Road.	1.5 miles
	Slow through Schafer State Park	
	Turn Left onto Satsop-Cloquallum Road.	8.1 miles
	Turn Right onto Cloquallum Road.	2.6 miles
	Cross Cloquallum Creek three times	
	CAUTION! Fast highway and easy-to-miss turn	
Deckerville 43 Finish to Sanderson Field:	Turn Left onto Bush Creek Road and proceed to Andy's Wildcat Start.	3.8 miles
	Left turn is Route Book Page 36 Instruction 11	
	Continue Straight to Matlock Brady Road.	250 feet
	Turn Left onto Matlock Brady Road.	7.2 miles
	Slow for School	
	Turn Right onto Matlock-Deckerville Road.	9.5 miles
	Turn Left onto Dayton Airport Road.	4.5 miles
	Turn Right onto Extension Road.	
	Proceed into Sanderson Field.	

PowerStage Finish to Dayton Start:	Turn Right onto Eells Hill Road. 5.3 miles Turn Right onto Dayton Airport Road. 3.1 miles Turn Right onto Shelton-Matlock Road. 0.5 miles Turn Left onto Highland Road. 3.4 miles Turn Left at the delta junction, go through the gate and proceed to Dayton Start. 0.3 miles Left turn is Route Book Page 63 Instruction 10 from the opposite direction
PowerStage Finish to Deckerville 43 Start:	Turn Right onto Eells Hill Road. 5.3 miles Turn Right onto Dayton Airport Road. 3.1 miles Turn Right onto Shelton-Matlock Road. 9.5 miles Continue Straight as road becomes Matlock-Deckerville Road. 1.0 miles Bear Right as road becomes Deckerville Road. 3.3 miles Continue Straight as road becomes Boundary Road. 1.9 miles Turn Left onto the 6700 Road and proceed to Deckerville 43 Start. 0.2 miles Left turn is Route Book Page 20 Instruction 5
PowerStage Finish to PowerStage Start:	Turn Right onto Eells Hill Road. 5.3 miles Turn Right onto Dayton Airport Road. 3.1 miles Turn Right onto Shelton-Matlock Road. 7.5 miles Turn Right onto gravel road (Northwest Forest Link) 0.1 miles Turn Left at T junction and proceed to PowerStage Start. 2.5 miles Left at T junction is Route Book Page 85 Instruction 9
PowerStage Finish to Schafer Start:	Turn Right onto Eells Hill Road. 5.3 miles Turn Right onto Dayton Airport Road. 3.1 miles Turn Right onto Shelton Matlock Road. 9.5 miles Continue Straight as road becomes Matlock-Deckerville Road. 1.0 miles Bear Right as road becomes Deckerville Road. 3.3 miles Continue Straight as road becomes Boundary Road. 1.1 miles Turn Right onto Kelly Road. 0.9 miles Turn Left onto unnamed gravel road. 0.1 miles Turn second Right into Cook Reload. 0.4 miles Turn Left onto the 560 Road and proceed to Schafer Start. 0.2 miles Left turn is Route Book Page 11 Instruction 18

PowerStage Finish to The Stillwater Start:	Turn Right onto Eells Hill Road. Turn Right onto Dayton Airport Road. Turn Right onto Shelton-Matlock Road. Turn Left onto the 5500 Road and proceed to The Stillwater Start. Left turn is Route Book Page 54 Instruction 9	5.3 miles 3.1 miles 6.2 miles 1.0 miles
PowerStage Finish to Andy's Wildcat Start:	Turn Right onto Eells Hill Road. Turn Right onto Dayton Airport Road. Turn Right onto Shelton Matlock Road. Turn Left onto Highland Road. Turn Right onto Cloquallum Road. Bear Left to stay on Cloquallum Road. Cross Cloquallum Creek three times CAUTION! Fast highway and easy-to-miss turn Turn Left onto Bush Creek Road and proceed to Andy's Wildcat Start. Left turn is Route Book Page 36 Instruction 11	5.3 miles 3.1 miles 0.5 miles 7.9 miles 1.2 miles 2.6 miles 3.8 miles
PowerStage Finish to Sanderson Field:	Turn Right onto Eells Hill Road. Turn Left onto Dayton Airport Road. Turn <u>Right</u> onto Extension Road. Proceed into Sanderson Field.	5.3 miles 1.4 miles

Schafer Finish to Dayton Start:	Continue Straight to Kelly Road.	0.7 miles
	Turn Right onto Kelly Road.	0.5 miles
	Turn Left onto Boundary Road.	1.1 miles
	Continue Straight as road becomes Deckerville Road.	3.3 miles
	Bear Left as road becomes Matlock-Deckerville Road.	1.0 miles
	Continue Straight as road becomes Shelton-Matlock Road.	9.0 miles
	Turn Right onto Highland Road.	3.4 miles
	Turn Left at the delta junction, go through the gate and proceed to Dayton Start. Left turn is Route Book Page 63 Instruction 10 from the opposite direction	0.3 miles
Schafer Finish to Deckerville 43 Start:	Continue Straight to Kelly Road.	0.7 miles
	Turn Right onto Kelly Road.	0.5 miles
	Turn Right onto Boundary Road.	0.8 miles
	Turn Left onto the 6700 Road and proceed to Deckerville 43 Start.	0.2 miles
	Left turn is Route Book Page 20 Instruction 5	
Schafer Finish to PowerStage Start:	Continue Straight to Kelly Road.	0.7 miles
	Turn Right onto Kelly Road.	0.5 miles
	Turn Left onto Boundary Road.	1.1 miles
	Continue Straight as road becomes Deckerville Road.	3.3 miles
	Bear Left as road becomes Matlock-Deckerville Road.	1.0 miles
	Continue Straight as road becomes Shelton-Matlock Road.	5.8 miles
	Turn Left onto gravel road (Northwest Forest Link).	0.1 miles
	Turn Left at T junction and proceed to PowerStage Start. Left at T junction is Route Book Page 85 Instruction 9	2.5 miles
Schafer Finish to Schafer Start:	Continue Straight to Kelly Road.	0.7 miles
	Turn Left onto Kelly Road.	0.4 miles
	Turn Left onto unnamed gravel road.	0.1 miles
	Turn second Right into Cook Reload.	0.4 miles
	Turn Left onto the 560 Road and proceed to Schafer Start.	0.2 miles
	Left turn is Route Book Page 11 Instruction 18	

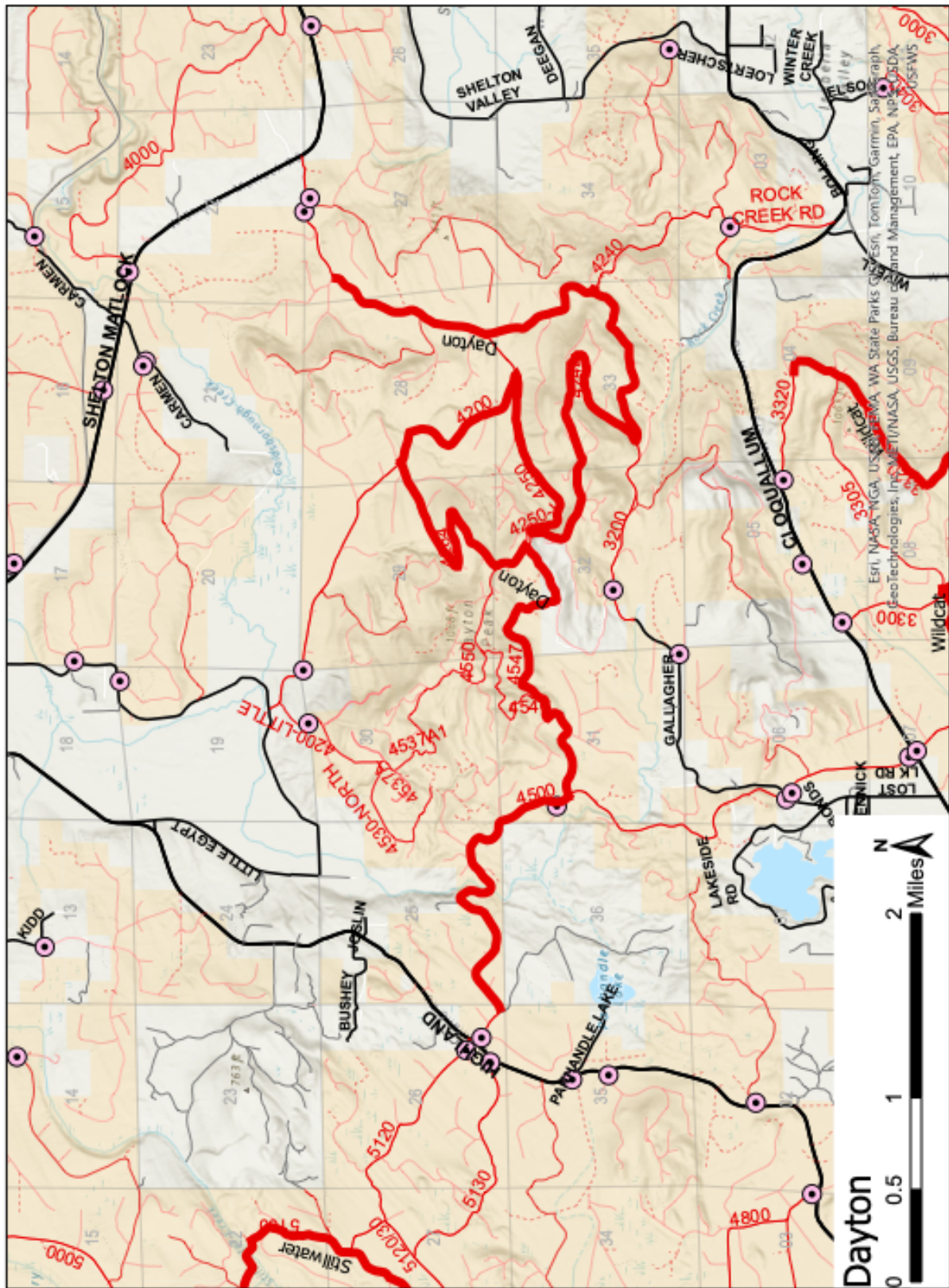
Schafer Finish to The Stillwater Start:	Continue Straight to Kelly Road.	0.7 miles
	Turn Right onto Kelly Road.	0.5 miles
	Turn Left onto Boundary Road.	1.1 miles
	Continue Straight as road becomes Deckerville Road.	3.3 miles
	Bear Left as road becomes Matlock-Deckerville Road.	1.0 miles
	Continue Straight as road becomes Shelton-Matlock Road.	3.3 miles
	Turn Right onto the 5500 Road and proceed to The Stillwater Start.	1.0 miles
	Right turn is Route Book Page 54 Instruction 9 from the opposite direction	
Schafer Finish to Andy's Wildcat Start:	Continue Straight to Kelly Road.	0.7 miles
	Turn Right onto Kelly Road.	0.5 miles
	Turn Right onto Boundary Road.	8.4 miles
	Turn Right onto Matlock-Brady Road.	1.3 miles
	Turn Left onto Satsop Road.	1.5 miles
	Slow through Schafer State Park	
	Turn Left onto Satsop-Cloquallum Road.	8.1 miles
	Turn Right onto Cloquallum Road.	2.6 miles
	Cross Cloquallum Creek three times	
	CAUTION! Fast highway and easy-to-miss turn	
Schafer Finish to Sanderson Field:	Turn Left onto Bush Creek Road and proceed to Andy's Wildcat Start.	3.8 miles
	Left turn is Route Book Page 36 Instruction 11	
	Continue Straight to Kelly Road.	0.7 miles
	Turn Right onto Kelly Road.	0.5 miles
	Turn Left onto Boundary Road.	1.1 miles
	Continue Straight onto Deckerville Road.	3.3 miles
	Bear Left onto Matlock-Deckerville Road.	1.0 miles
	Continue Straight onto Shelton-Matlock Road.	9.5 miles
	Turn Left onto Dayton Airport Road.	4.5 miles
	Turn <u>Right</u> onto Extension Road.	
	Proceed into Sanderson Field.	

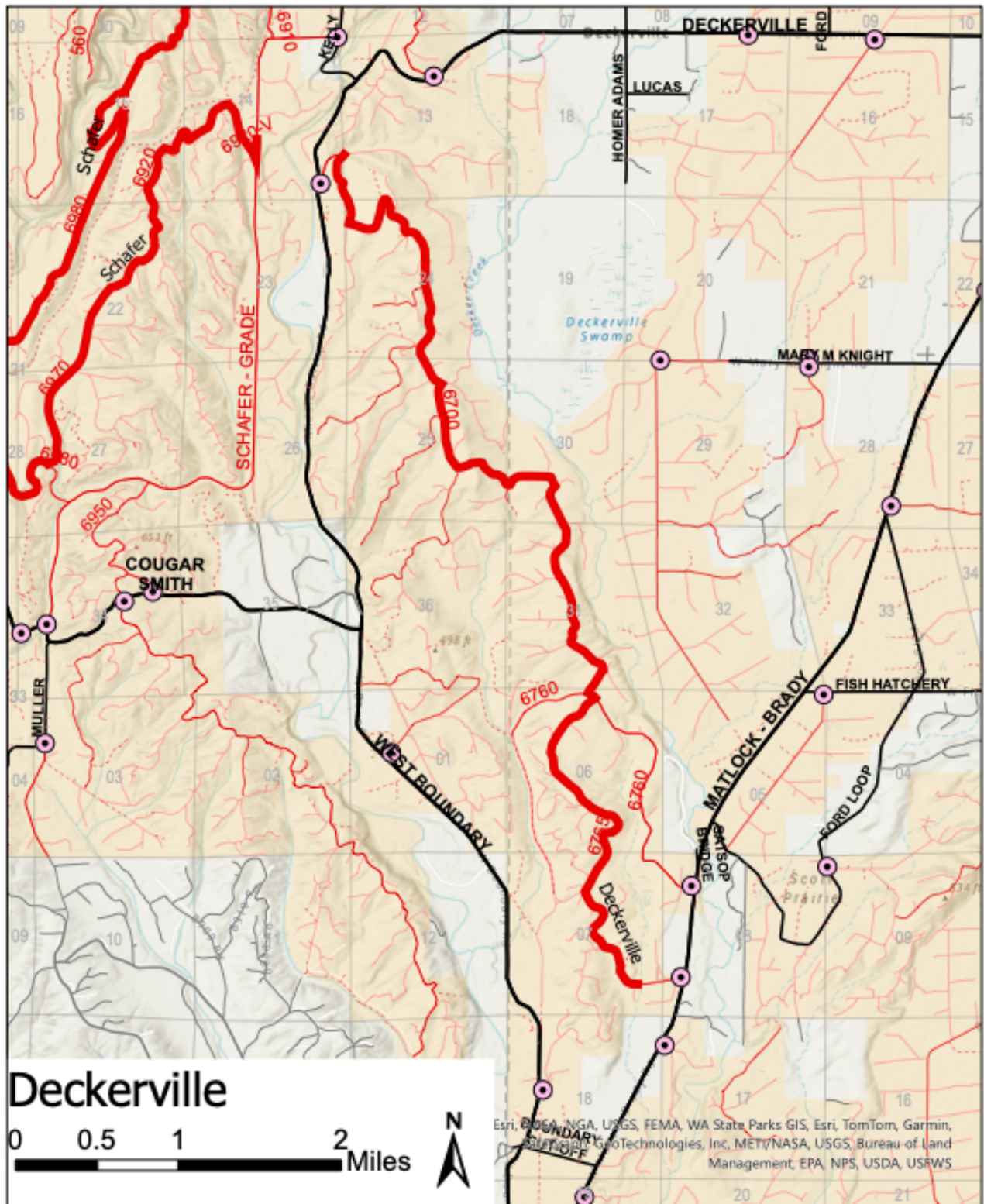
The Stillwater Finish to Dayton Start:	Follow Route Book to Highland Road. (Page 62-63, Instructions 1-8)	2.4 miles
	Turn Left onto Highland Road.	2.4 miles
	Turn Right at the delta junction, go through the gate and proceed to Dayton Start.	0.3 miles
	Right turn is Route Book Page 63 Instruction 10	
The Stillwater Finish to Deckerville 43 Start:	Follow Route Book to Highland Road. (Page 62-63, Instructions 1-8)	2.4 miles
	Turn Left onto Highland Road.	5.7 miles
	Turn Left onto Shelton-Matlock Road.	9.0 miles
	Continue Straight as road becomes Matlock-Deckerville Road.	1.0 miles
	Bear Right as road becomes Deckerville Road.	3.3 miles
	Continue Straight as road becomes Boundary Road.	1.9 miles
	Turn Left onto the 6700 Road and proceed to Deckerville 43 Start.	0.2 miles
	Left turn is Route Book Page 20 Instruction 5	
The Stillwater Finish to PowerStage Start:	Follow Route Book to Highland Road. (Page 62-63, Instructions 1-8)	2.4 miles
	Turn Left onto Highland Road.	5.7 miles
	Turn Left onto Shelton-Matlock Road.	3.2 miles
	Turn Right onto gravel road (Northwest Forest Link)	0.1 miles
	Turn Left at T junction and proceed to PowerStage Start.	2.5 miles
	Left at T junction is Route Book Page 85 Instruction 9	
The Stillwater Finish to Schafer Start:	Follow Route Book to Highland Road. (Page 62-63, Instructions 1-8)	2.4 miles
	Turn Left onto Highland Road.	5.7 miles
	Turn Left onto Shelton-Matlock Road.	9.0 miles
	Continue Straight as road becomes Matlock-Deckerville Road.	1.0 miles
	Bear Right as road becomes Deckerville Road.	3.3 miles
	Continue Straight as road becomes Boundary Road.	1.1 miles
	Turn Right onto Kelly Road.	0.9 miles
	Turn Left onto unnamed gravel road.	0.1 miles
	Turn second Right into Cook Reload.	0.4 miles
	Turn Left onto the 560 Road and proceed to Schafer Start.	0.2 miles
	Left turn is Route Book Page 11 Instruction 18	

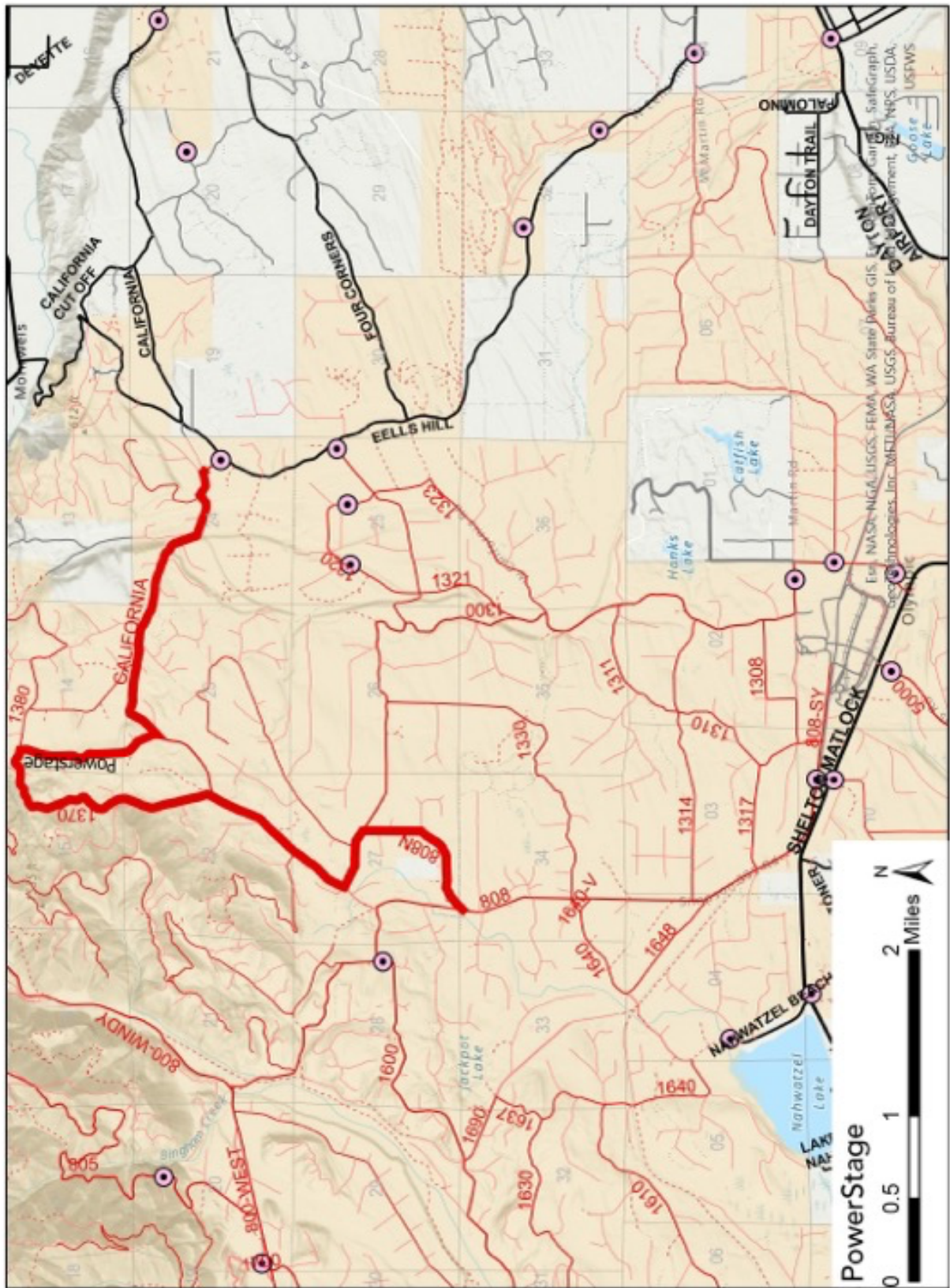
The Stillwater Finish to The Stillwater Start:	<p>Follow Route Book to Highland Road. (Page 62-63, Instructions 1-8) 2.4 miles</p> <p>Turn Left onto Highland Road. 5.7 miles</p> <p>Turn Left onto Shelton-Matlock Road. 5.7 miles</p> <p>Turn Left onto the 5500 Road and proceed to The Stillwater Start. 1.0 miles</p> <p>Left turn is Route Book Page 54 Instruction 9</p>
The Stillwater Finish to Andy's Wildcat Start:	<p>Follow Route Book to Highland Road. (Page 62-63, Instructions 1-8) 2.4 miles</p> <p>Turn <u>Right</u> onto Highland Road. 2.2 miles</p> <p>Turn Right onto Cloquallum Road. 1.2 miles</p> <p>Bear Left to stay on Cloquallum Road. 2.6 miles</p> <p>Cross Cloquallum Creek three times</p> <p>CAUTION! Fast highway and easy-to-miss turn</p> <p>Turn Left onto Bush Creek Road and proceed to Andy's Wildcat Start. 3.8 miles</p> <p>Left turn is Route Book Page 36 Instruction 11</p>
The Stillwater Finish to Sanderson Field:	<p>Follow Route Book to Highland Road. (Page 62-63, Instructions 1-8) 2.4 miles</p> <p>Turn Left onto Highland Road. 5.7 miles</p> <p>Turn Right onto Shelton-Matlock Road. 0.5 miles</p> <p>Turn Left onto Dayton Airport Road. 4.5 miles</p> <p>Turn Right onto Extension Road.</p> <p>Proceed into Sanderson Field.</p>

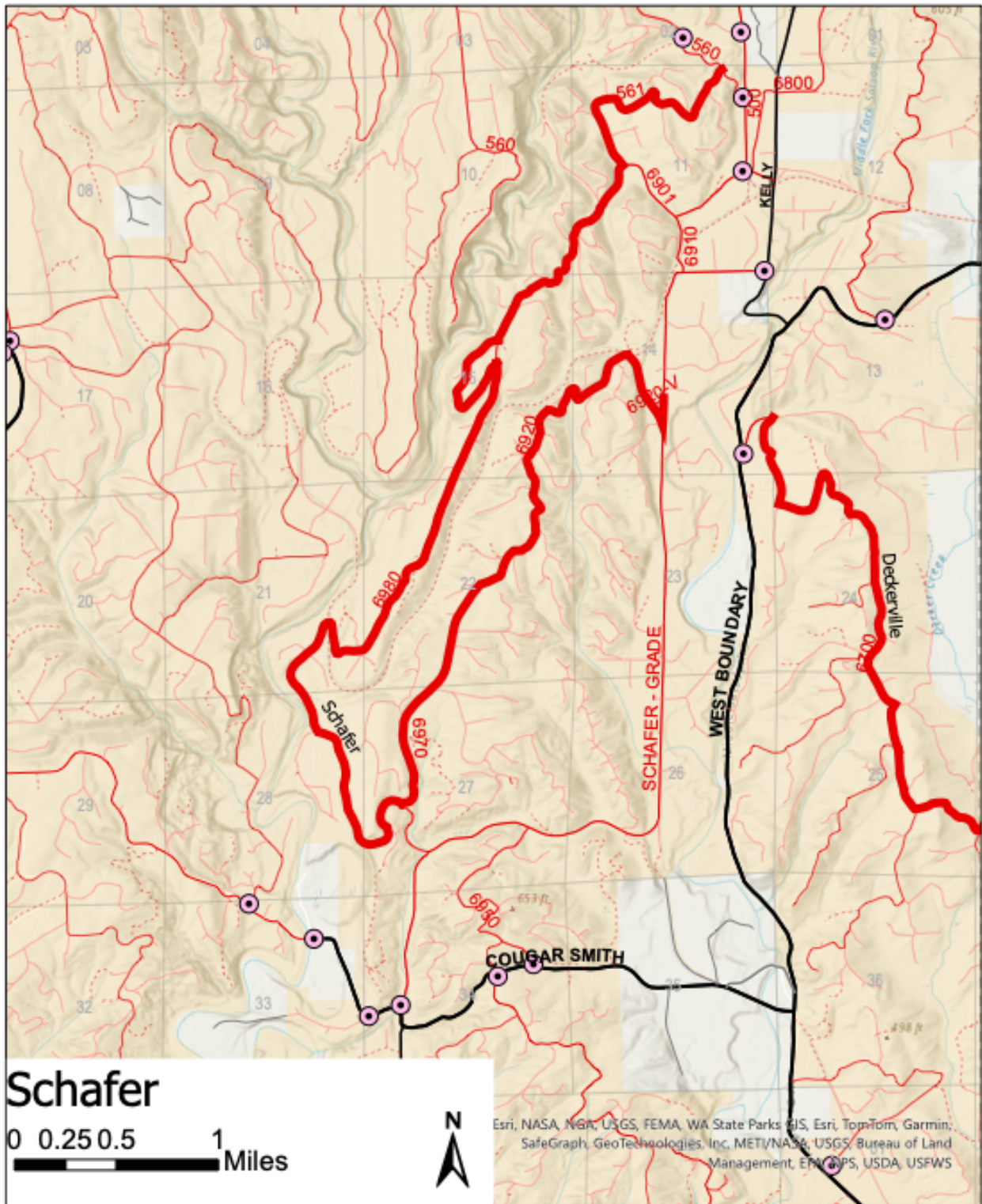
Andy's Wildcat Finish to Dayton Start:	Continue Straight to Cloquallum Road.	200 feet
	Turn acute Left onto Cloquallum Road.	5.1 miles
	Use caution turning Left. Or turn Right and then u-turn in a safe location	
	Turn Right onto Highland Road.	4.6 miles
	Turn Right at the delta junction, go through the gate and proceed to Dayton Start.	0.3 miles
	Right turn is Route Book Page 63 Instruction 10	
Andy's Wildcat Finish to Deckerville 43 Start:	Continue Straight to Cloquallum Road.	200 feet
	Turn acute Left onto Cloquallum Road.	5.1 miles
	Use caution turning Left. Or turn Right and then u-turn in a safe location	
	Turn Right onto Highland Road.	7.9 miles
	Turn Left onto Shelton Matlock Road.	9.0 miles
	Continue Straight as road becomes Matlock-Deckerville Road.	1.0 miles
	Bear Right as road becomes Deckerville Road.	3.3 miles
	Continue Straight as road becomes Boundary Road.	1.9 miles
Andy's Wildcat Finish to PowerStage Start:	Turn Left onto the 6700 Road and proceed to Deckerville 43 Start.	0.2 miles
	Left turn is Route Book Page 20 Instruction 5	
	Continue Straight to Cloquallum Road.	200 feet
	Turn acute Left onto Cloquallum Road.	5.1 miles
	Use caution turning Left. Or turn Right and then u-turn in a safe location	
Andy's Wildcat Finish to Schafer Start:	Turn Right onto Highland Road.	7.9 miles
	Turn Left onto Shelton Matlock Road.	3.2 miles
	Turn Right onto gravel road (Northwest Forest Link)	0.1 miles
	Turn Left at T junction and proceed to PowerStage Start.	2.5 miles
	Left at T junction is Route Book Page 85 Instruction 9	
Andy's Wildcat Finish to Schafer Start:	Continue Straight to Cloquallum Road.	200 feet
	Turn acute Left onto Cloquallum Road.	5.1 miles
	Use caution turning Left. Or turn Right and then u-turn in a safe location	
	Turn Right onto Highland Road.	7.9 miles
	Turn Left onto Shelton-Matlock Road.	9.0 miles
	Continue Straight as road becomes Matlock-Deckerville Road.	1.0 miles
	Bear Right as road becomes Deckerville Road.	3.3 miles
	Continue Straight as road becomes Boundary Road.	1.1 miles
	Turn Right onto Kelly Road.	0.9 miles
	Turn Left onto unnamed gravel road.	0.1 miles
	Turn second Right into Cook Reload.	0.4 miles
	Turn Left onto the 560 Road and proceed to Schafer Start.	0.2 miles
	Left turn is Route Book Page 11 Instruction 18	

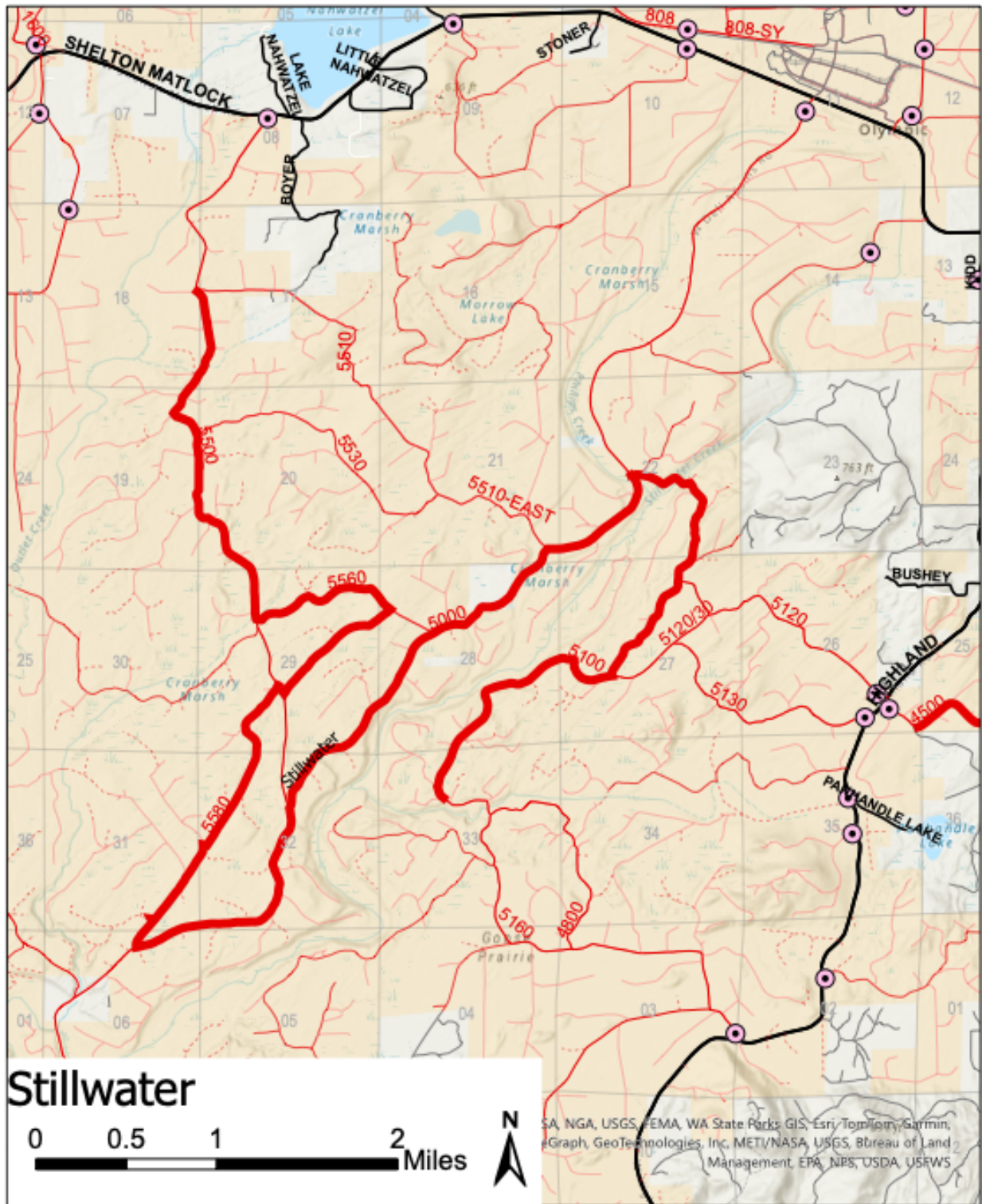
Andy's Wildcat Finish to The Stillwater Start:	Continue Straight to Cloquallum Road.	200 feet
	Turn acute Left onto Cloquallum Road.	5.1 miles
	Use caution turning Left. Or turn Right and then u-turn in a safe location	
	Turn Right onto Highland Road.	7.9 miles
	Turn Left onto Shelton Matlock Road.	5.7 miles
	Turn Left onto the 5500 Road and proceed to The Stillwater Start.	1.0 miles
	Left turn is Route Book Page 54 Instruction 9	
Andy's Wildcat Finish to Andy's Wildcat Start:	Continue Straight to Cloquallum Road.	200 feet
	Turn acute Left onto Cloquallum Road.	5.1 miles
	Use caution turning Left. Or turn Right and then u-turn in a safe location	
	Bear Left to stay on Cloquallum Road.	2.6 miles
	Cross Cloquallum Creek three times	
	CAUTION! Fast highway and easy-to-miss turn	
	Turn Left onto Bush Creek Road and proceed to Andy's Wildcat Start.	3.8 miles
	Left turn is Route Book Page 36 Instruction 11	
Andy's Wildcat Finish to Sanderson Field:	Continue Straight to Cloquallum Road.	200 feet
	Turn acute Left onto Cloquallum Road.	5.1 miles
	Use caution turning Left. Or turn Right and then u-turn in a safe location	
	Turn Right onto Highland Road.	7.9 miles
	Turn Right onto Shelton Matlock Road.	0.5 miles
	Turn Left onto Dayton Airport Road.	4.5 miles
	Turn <u>Right</u> onto Extension Road.	
	Proceed into Sanderson Field.	

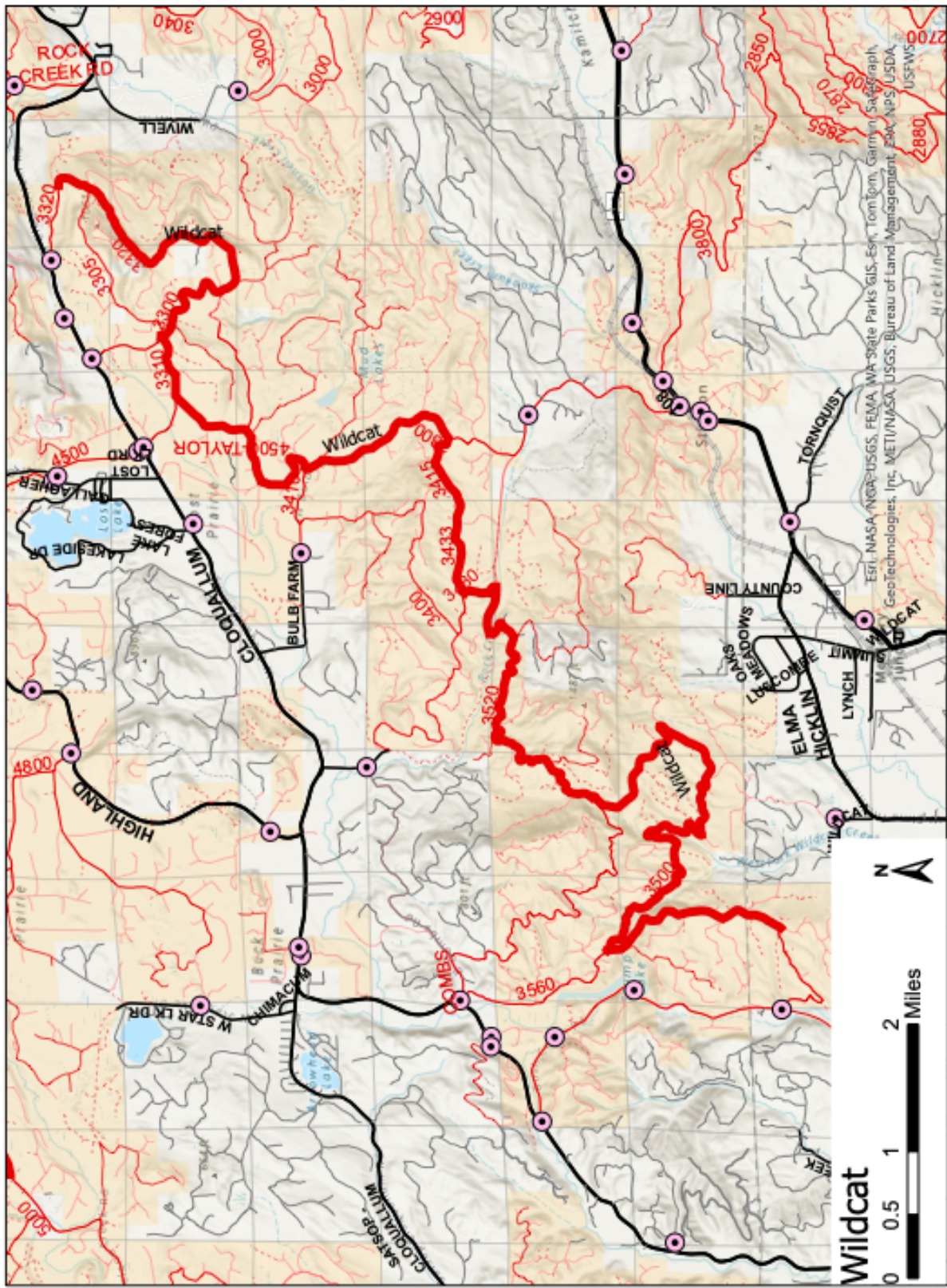












Changes Since Preliminary Version

1. The name of Wildcat stage was changed to Andy's Wildcat.
2. The Page and Instruction numbers for the Route Book references have been added.
3. Many of the stage descriptions have been simplified.
4. Spelling of Kelley Road corrected to Kelly Road. Most online map services misspell the name.