



1. Recce Changes For Maryhill

Due to unanticipated scheduling issues, access to the Maryhill stage road is limited to certain hours. Recce of that road may be done on Thursday, 18 May from 07:00 to 12:00.

2. Recce Hours Extension

Recce hours on Thursday, 18 May are changed to 07:00 to 20:00.

3. Anti-corner Cutting Devices On Maryhill

When the Maryhill stages are run, there will be anti-corner cutting devices in place. These will be orange, concrete-filled Home Depot buckets with orange bollards extending vertically from the center. Each weigh 40 lbs.

They will not be in place during Recce. Instead cones will be located where the anti-corner cutting devices will be.



4. Additional Transit Times For Refuel

The transit times out of Service B, D, E and F have been extended by 5 min.

These changes are reflected in the attached stage schedule.

5. Dufur Refuel Location Change




The location of the Refuel Zone in Dufur (Sunday stages) has been changed. This has resulted in changes to the route and the stage schedule.

The Service Out Control has been moved from Main St. between 1st and 2nd Streets to Heimrich/Main St. between Hogans Alley and the Fifteen Mile Creek Bridge. The Refuel Zone has been moved from the corner of Main St. and 2nd St. to the Threshing Bee.

This move has resulted in changes to the transit distances out of Service E and F.

The attached overview map, which replaces the first map in the Sunday Route Book (page 98 of the electronic version PDF), and stage schedules reflect those changes.

Replace Instructions 2-4 on pages 25 and 49 of the Sunday Route Book with the following instructions:




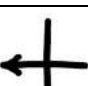

INST	MILEAGE	INTERVAL	TULIP	COMMENT	DECR
2	0.03	0.03		Optional Left onto Airport Way for Refueling	E: 9.57 F: 10.61
3	0.07	0.04		Right onto 1 st Street	E: 9.55 F: 10.59
4	0.11	0.04		Continue Straight On 1 st Street	E: 9.50 F: 10.54

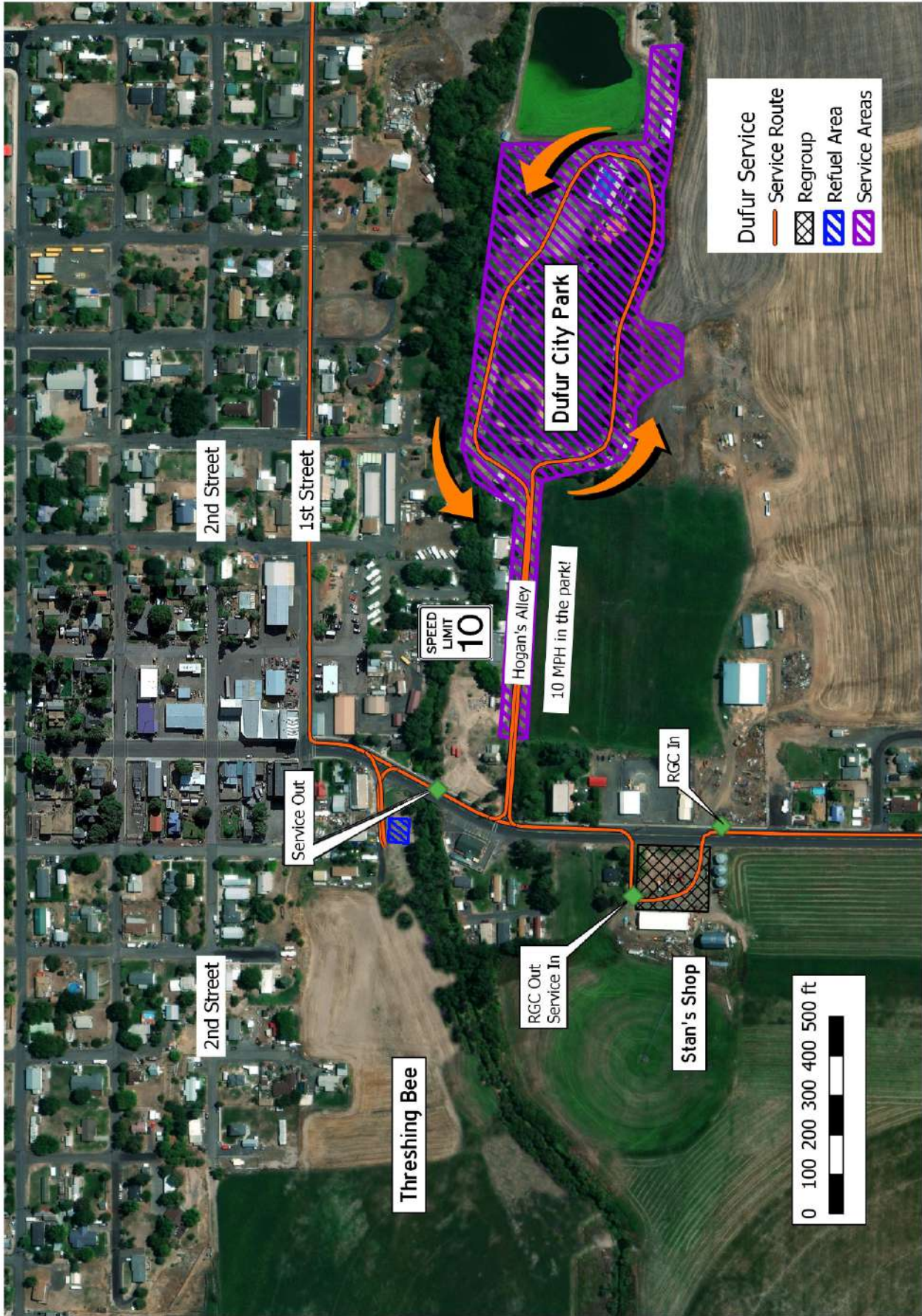
Add 0.03 to each of these transits and the Mileage column for Instructions 5 onward.

6. Directions To Impound

After the final time control of the rally, whether the national or regional, proceed to Impound. For the national rally, this is after TC 19A (after Sunday Route Book page 56 instruction 10). For the regional rally, this is after TC 18A (after Sunday Route Book page 47 instruction 10).

Follow these route instructions to Impound:

INST	MILEAGE	INTERVAL	TULIP	COMMENT	DECR
1	0.00	0.00		Continue Straight on Heimrich St. past where it becomes Main St.	0.37
2	0.20	0.20		Right on 1st St.	0.17
3	0.24	0.04		Left on Williams St.	0.13
4	0.28	0.04		Continue past 2nd St.	0.09
5	0.33	0.05		Left on 3rd St.	0.04
6	0.37	0.04		Left on Main St. into Impound You will directed where to park	0.00



2023 Oregon Trail Rally - National Schedule

TOTALS OF THE RALLY				
	SS	TRANSIT	TOTAL	%
LEG 1 (Sections 1, 2)	7.4	0.7	8.1	92%
LEG 2 (Sections 3, 4, 5, 6)	49.7	179.6	229.4	22%
LEG 3 (Sections 7, 8, 9)	54.0	121.7	175.8	31%
Total -- 19 SS	111.2	302.0	413.2	27%

START (Sections 1, 2)		FRIDAY MAY 19, 2023					
TC	LOCATION	SS DIST	TRANSIT DIST	TOTAL DIST	LATENESS TIME	TRANSIT TIME	FIRST CAR DUE
0	MTC OUT (PIR)						19:00
	distance to next refuel	(7.42)	(0.66)	(8.08)			
1			0.33	0.33		0:10	19:10
SS 1	FOUNDERS OLMSTEAD, MOORE, NAGLE SUPER SPECIAL I	3.71			0:06		19:13
1A	SERVICE IN		0.00	3.71		0:00	19:19
	SERVICE A (PIR)	(3.71)	0.33	(4.04)			
1B	SERVICE OUT					0:35	19:54
2			0.33	0.33		0:10	20:04
SS 2	FOUNDERS OLMSTEAD, MOORE, NAGLE SUPER SPECIAL II	3.71			0:06		20:07
2A	MTC IN (PIR)		0.00	3.71		0:00	20:13
Friday Totals		7.42	0.66	8.08			

Section 1
Section 2

5/10/23

2023 Oregon Trail Rally - National Schedule

START - (Sections 3, 4, 5, 6)							SATURDAY MAY 20, 2023
TC	LOCATION	SS DIST	TRANSIT DIST	TOTAL DIST	LATENESS TIME	TRANSIT TIME	FIRST CAR DUE
2B	MTC OUT (Main Street Goldendale)						9:00
	distance to next refuel	(16.79)	(52.32)	(69.11)			
3			27.30	27.30		0:45	9:45
SS 3	DALLES MTN UP I	10.01			0:13		9:48
4			13.00	23.01		0:33	10:34
SS 4	THE GREAT HORSESHOE I	6.78			0:13		10:37
4A	REGROUPING IN		12.02	18.80		0:29	11:19
4B	REGROUPING OUT - SERVICE IN					0:15	11:34
	SERVICE B (Goldendale HS)	(16.79)	(52.32)	(69.11)			
4C	SERVICE OUT					0:35	12:09
RZ	REFUEL						
1	distance to next refuel	(8.08)	(37.50)	(45.58)			
5			10.50	10.50		0:31	12:40
SS 5	OAK FLAT REVERSE I	5.60			0:09		12:43
6			20.10	25.7		0:36	13:28
SS 6	MARYHILL I	2.48			0:05		13:31
6A	REGROUPING IN		6.90	9.38		0:22	13:58
6B	REGROUPING OUT - SERVICE IN					0:15	14:13
	SERVICE C (Goldendale HS)	(8.08)	(37.50)	(45.58)			
6C	SERVICE OUT					0:35	14:48
RZ	REFUEL						
2	distance to next refuel	(16.79)	(52.32)	(69.11)			
7			27.30	27.30		0:45	15:33
SS 7	DALLES MTN UP II	10.01			0:13		15:36
8			13.00	23.01		0:33	16:22
SS 8	THE GREAT HORSESHOE II	6.78			0:13		16:25
8A	REGROUPING IN		12.02	18.80		0:29	17:07
8B	REGROUPING OUT - SERVICE IN					0:15	17:22
	SERVICE D (Goldendale HS)	(16.79)	(52.32)	(69.11)			
8C	SERVICE OUT					0:35	17:57
RZ	REFUEL						
3	distance to next refuel	(8.08)	(37.50)	(45.58)			
9			10.50	10.50		0:31	18:28
SS 9	OAK FLAT REVERSE II	5.60			0:09		18:31
10			20.10	25.7		0:36	19:16
SS 10	MARYHILL II	2.48			0:05		19:19
10A	MTC IN (Goldendale HS)		6.90	9.38		0:22	19:46
Saturday Totals		49.74	179.64	229.38			

5/10/23

2023 Oregon Trail Rally - National Schedule

START - (Sections 7, 8, 9)							SUNDAY MAY 21, 2023
TC	LOCATION	SS DIST	TRANSIT DIST	TOTAL DIST	LATENESS TIME	TRANSIT TIME	FIRST CAR DUE
10B	MTC OUT (Dufur)						9:00
	distance to next refuel	(23.03)	(51.62)	(74.65)			
11			9.52	9.52		0:28	9:28
SS 11	BOYD LOOP VERY SHORT I	5.60			0:09		9:31
12			8.38	13.98		0:25	10:05
SS 12	SHADOWBUCK I	4.62			0:08		10:08
13			5.02	9.64		0:16	10:32
SS 13	NAGLE'S REVENGE I	4.86			0:12		10:35
14			20.90	25.76		0:40	11:27
SS 14	STARVEOUT I	7.95			0:12		11:30
14A	REGROUPING IN		7.80	15.75		0:22	12:04
14B	REGROUPING OUT - SERVICE IN					0:15	12:19
	SERVICE E (Dufur)	(23.03)	(51.62)	(74.65)			
14C	SERVICE OUT					0:40	12:59
RZ	REFUEL						
4	distance to next refuel	(23.03)	(51.69)	(74.72)			
15			9.59	9.59		0:33	13:32
SS 15	BOYD LOOP VERY SHORT II	5.60			0:09		13:35
16			8.38	13.98		0:25	14:09
SS 16	SHADOWBUCK II	4.62			0:08		14:12
17			5.02	9.64		0:16	14:36
SS 17	NAGLE'S REVENGE II	4.86			0:12		14:39
18			20.90	25.76		0:40	15:31
SS 18	STARVEOUT II	7.95			0:12		15:34
18A	REGROUPING IN		7.80	15.75		0:22	16:08
18B	REGROUPING OUT - SERVICE IN					0:30	16:38
	SERVICE F (Dufur)	(23.03)	(51.69)	(74.72)			
18C	SERVICE OUT					0:30	17:08
RZ	REFUEL						
5	distance to next refuel	(7.95)	(18.50)	(26.64)			
19			10.63	10.63		0:30	17:38
SS19	STARVEOUT III	7.95			0:12		17:41
19A	MTC IN (Dufur)		7.80	15.75		0:22	18:15
Sunday Totals		54.01	121.74	175.75			

Section 7

Section 8

Section 9

5/10/23

2023 Oregon Trail Rally - Regional Schedule

TOTALS OF THE RALLY				
	SS	TRANSIT	TOTAL	%
LEG 1 (Sections 1, 2)	7.4	0.7	8.1	92%
LEG 2 (Sections 3, 4, 5, 6)	49.7	179.6	229.4	22%
LEG 3 (Sections 7, 8, 9)	46.1	103.3	149.6	31%
Total -- 18 SS	103.2	283.6	387.0	27%

START (Sections 1, 2)		FRIDAY MAY 19, 2023					
TC	LOCATION	SS DIST	TRANSIT DIST	TOTAL DIST	LATENESS TIME	TRANSIT TIME	FIRST CAR DUE
0	MTC OUT (PIR)						19:00
	distance to next refuel	(7.42)	(0.66)	(8.08)			
1			0.33	0.33		0:10	19:10
SS 1	FOUNDERS OLMSTEAD, MOORE, NAGLE SUPER SPECIAL I	3.71			0:06		19:13
1A	SERVICE IN		0.00	3.71		0:00	19:19
	SERVICE A (PIR)	(3.71)	0.33	(4.04)			
1B	SERVICE OUT					0:35	19:54
2			0.33	0.33		0:10	20:04
SS 2	FOUNDERS OLMSTEAD, MOORE, NAGLE SUPER SPECIAL II	3.71			0:06		20:07
2A	MTC IN (PIR)		0.00	3.71		0:00	20:13
Friday Totals		7.42	0.66	8.08			

Section 1
Section 2

5/10/23

2023 Oregon Trail Rally - Regional Schedule

START - (Sections 3, 4, 5, 6)				SATURDAY MAY 20, 2023			
TC	LOCATION	SS DIST	TRANSIT DIST	TOTAL DIST	LATENESS TIME	TRANSIT TIME	FIRST CAR DUE
2B	MTC OUT (Main Street Goldendale)						9:00
	distance to next refuel	(16.79)	(52.32)	(69.11)			
3			27.30	27.30		0:45	9:45
SS 3	DALLES MTN UP I	10.01			0:13		9:48
4			13.00	23.01		0:33	10:34
SS 4	THE GREAT HORSESHOE I	6.78			0:13		10:37
4A	REGROUPING IN		12.02	18.80		0:29	11:19
4B	REGROUPING OUT - SERVICE IN					0:15	11:34
	SERVICE B (Goldendale HS)	(16.79)	(52.32)	(69.11)			
4C	SERVICE OUT					0:35	12:09
RZ	REFUEL						
1	distance to next refuel	(8.08)	(37.50)	(45.58)			
5			10.50	10.50		0:31	12:40
SS 5	OAK FLAT REVERSE I	5.60			0:09		12:43
6			20.10	25.7		0:36	13:28
SS 6	MARYHILL I	2.48			0:05		13:31
6A	REGROUPING IN		6.90	9.38		0:22	13:58
6B	REGROUPING OUT - SERVICE IN					0:15	14:13
	SERVICE C (Goldendale HS)	(8.08)	(37.50)	(45.58)			
6C	SERVICE OUT					0:35	14:48
RZ	REFUEL						
2	distance to next refuel	(16.79)	(52.32)	(69.11)			
7			27.30	27.30		0:45	15:33
SS 7	DALLES MTN UP II	10.01			0:13		15:36
8			13.00	23.01		0:33	16:22
SS 8	THE GREAT HORSESHOE II	6.78			0:13		16:25
8A	REGROUPING IN		12.02	18.80		0:29	17:07
8B	REGROUPING OUT - SERVICE IN					0:15	17:22
	SERVICE D (Goldendale HS)	(16.79)	(52.32)	(69.11)			
8C	SERVICE OUT					0:35	17:57
RZ	REFUEL						
3	distance to next refuel	(8.08)	(37.50)	(45.58)			
9			10.50	10.50		0:31	18:28
SS 9	OAK FLAT REVERSE II	5.60			0:09		18:31
10			20.10	25.7		0:36	19:16
SS 10	MARYHILL II	2.48			0:05		19:19
10A	MTC IN (Goldendale HS)		6.90	9.38		0:22	19:46
Saturday Totals		49.74	179.64	229.38			

5/10/23

2023 Oregon Trail Rally - Regional Schedule

START - (Sections 7, 8, 9)				SUNDAY MAY 21, 2023			
TC	LOCATION	SS DIST	TRANSIT DIST	TOTAL DIST	LATENESS TIME	TRANSIT TIME	FIRST CAR DUE
10B	MTC OUT (Dufur)						9:00
	distance to next refuel	(23.03)	(51.62)	(74.65)			
11			9.52	9.52		0:28	9:28
SS 11	BOYD LOOP VERY SHORT I	5.60			0:09		9:31
12			8.38	13.98		0:25	10:05
SS 12	SHADOWBUCK I	4.62			0:08		10:08
13			5.02	9.64		0:16	10:32
SS 13	NAGLE'S REVENGE I	4.86			0:12		10:35
14			20.90	25.76		0:40	11:27
SS 14	STARVEOUT I	7.95			0:12		11:30
14A	REGROUPING IN		7.80	15.75		0:22	12:04
14B	REGROUPING OUT - SERVICE IN					0:15	12:19
	SERVICE E (Dufur)	(23.03)	(51.62)	(74.65)			
14C	SERVICE OUT					0:40	12:59
RZ	REFUEL						
4	distance to next refuel	(23.03)	(51.69)	(74.91)			
15			9.59	9.59		0:33	13:32
SS 15	BOYD LOOP VERY SHORT II	5.60			0:09		13:35
16			8.38	13.98		0:25	14:09
SS 16	SHADOWBUCK II	4.62			0:08		14:12
17			5.02	9.64		0:16	14:36
SS 17	NAGLE'S REVENGE II	4.86			0:12		14:39
18			20.90	25.76		0:40	15:31
SS 18	STARVEOUT II	7.95			0:12		15:34
18A	MTC IN (Dufur)		7.80	15.94		0:22	16:08
Sunday Totals		46.06	103.31	149.56			

Section 7

Section 8

5/10/23