

COMMUNICATIONS #2

07/18/2025 1535 MDT

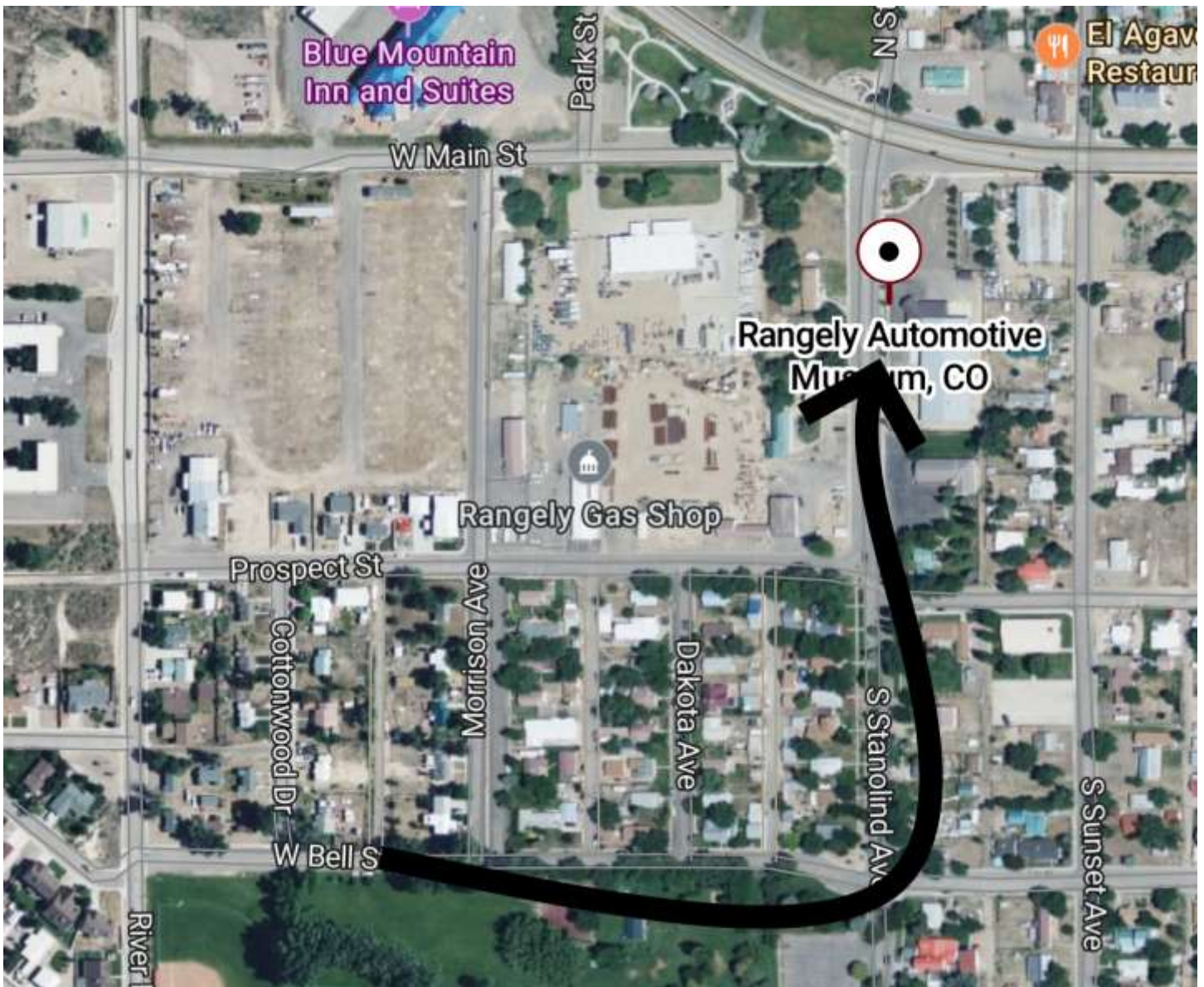


To all Competitors

① ENTRANCE FOR PARC EXPOSE

Please enter the Parc Expose from the SOUTH via STANOLIND AVE – the entrance from the north via MAIN STREET will be closed.

From Elk's Park, go east on BELL, go north on STANOLIND, follow directions from marshals.



② DRINKS FOR CREWS AT REMOTE REFUEL

We are allowing refueling crews to give drinks such as iced water to their driver and co-driver at the remote refuel on Saturday.

Rob Bohn

Clerk of the Course / 2025 Rally Colorado / <https://www.rallycolorado.net/>

A handwritten signature in black ink, appearing to read 'Rob Bohn', followed by a long, horizontal, wavy line.

OFFICIAL BULLETIN BOARD

- via the SPORTITY app / PASSWORD: **COLORADO2025**
- via the web version: <https://webapp.sportity.com/channel/COLORADO2025>