

## Coffs Coast Rally

### Service Crew Instructions

Saturday May 25<sup>th</sup>

Service Park is located at Coramba Sports and Recreation fields.

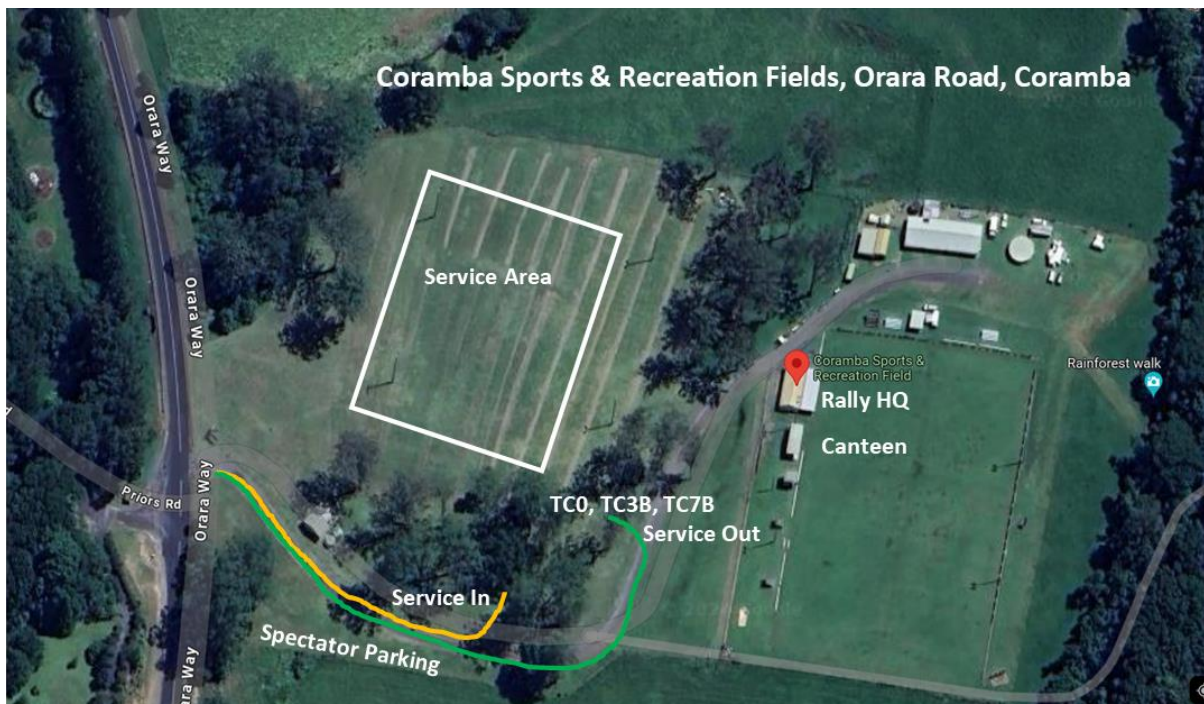
Orara Road, Coramba, NSW

This is the same location as Rally HQ.

There will be two Services over the event, as per the itinerary, of 20 minute duration.

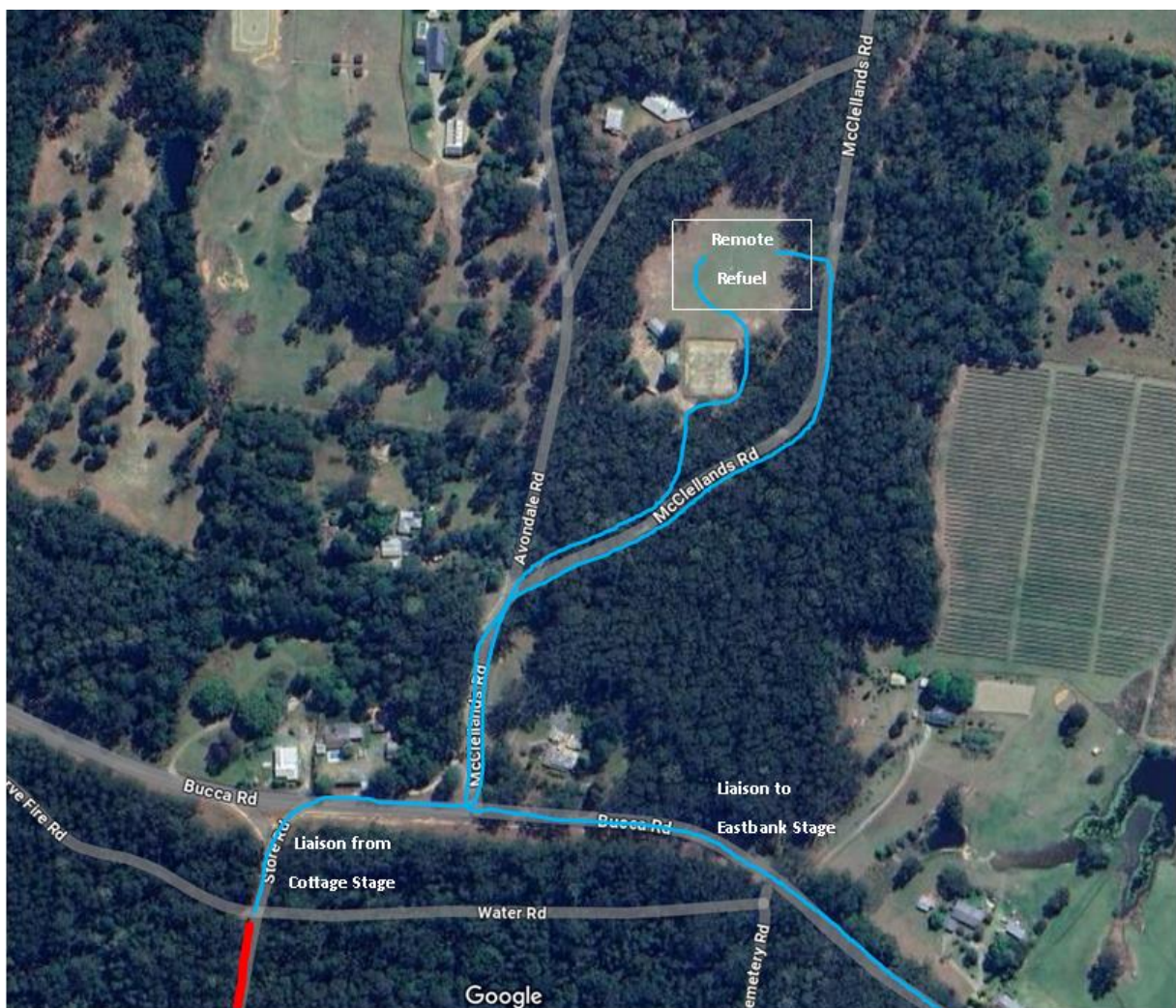
In Addition, there is an optional Remote refuel in heat 2, between Cottage 2 and Eastbank 2 stages, with a duration of 5 minutes

Refer to Service Park layout below:



## Instructions to Remote refuel

- 0 km Turn Right out of Service Park onto Orara Way
- 7.1 km Continue onto Nana St
- 500 m Turn right onto Grafton St
- 1.5 km Continue onto Bucca Rd
- 7.4 km Turn left onto McClellands Rd





# QUALITY ACCOUNTING

Profit From Our Experience



## COFFS COAST RALLY

25 May 2024  
ITINERARY



TC	Location	Distance			Target Time MINS	1st Car Due
		SS	Liaison	Total		
Technical Zone RallySafe Check					8:50	
Heat 1 - Section 1						Sunrise 06:32
TC 0	Coramba Sports & Recreation Field - Start					09:00
	To service A refuel->	44.99	49.57	94.56		
TC 1	Short Cut Rd		19.60	19.60	00:20	09:20
SS1	Sherwood Long	22.61				09:23
TC 2	Cottage Rd		19.90	42.51	00:43	10:06
SS2	Cottage 1	12.99				10:09
TC 3	McRae's Rd		3.85	16.84	00:17	10:26
SS3	Eastbank 1	9.39				10:29
<b>SERVICE A</b>		Location		Coramba Sports & Recreation Field		
		Service Time		Mins Suggested	20 Mins	
TC 3A	Coramba Sports Ground Regroup IN		6.22	15.61	00:36	11:05
<b>Coramba Regroup</b>		<b>Approx Min</b>		<b>00:10</b>		
TC 3B	Coramba Sports Ground Regroup OUT					11:15
	To service B refuel->	48.75	61.88	110.63		
	To remote refuel ->	39.36	55.66	95.02		
TC 4	Short Cut Rd		19.60	19.60	00:20	11:35
SS4	Sherwood Short 1	17.43				11:38
TC 5	Sherwood Rd		0.24	17.67	00:23	12:01
Heat 1 Distance Totals		(62.42)	(69.41)	(131.83)	Novice (Half Dist) return to Service	
<b>HEAT 2</b>						
SS5	Plum Pudding 1	8.94				12:04
TC 6	Cottage Rd		31.97	40.91	00:41	12:45
SS6	Cottage 2	12.99				12:48
TC 7	McRae's Rd		3.85	16.84	00:22	13:10
	Refuel Remote			Avondale Remote Refuel		
				Mins Suggested	5 Mins	
SS7	Eastbank 2	9.39				13:13
<b>SERVICE B</b>		Location		Coramba Sports & Recreation Field		
		Service Time		Mins Suggested	20 Mins	
TC 7A	Coramba Sports Ground Regroup IN		6.22	15.61	00:36	13:49
<b>Coramba Regroup</b>		<b>Approx Min</b>		<b>00:10</b>		
TC7B	Coramba Sports Ground Regroup OUT					13:59
	To next refuel ->	26.37	51.93	78.30		
TC 8	Short Cut Rd		19.60	19.60	00:20	14:19
SS8	Sherwood Short 2	17.43				14:22
TC 9	Sherwood Rd		0.24	17.67	00:23	14:45
SS9	Plum Pudding 2	8.94				14:48
TC 9A	Coramba FINISH		32.09	41.03	00:42	15:30
Heat 2 Distance Totals		(57.69)	(93.97)	(151.66)		
Total Distance for Heat 1 & 2		(120.11)	(163.38)	(283.49)	Sunset 16:56	
NOTE 1: Novice (half distance) return to Coramba Service after SS4 Sherwood Short 1						
NOTE 2: TC 9A Early Book IN is approved						