



# MANUMBAR RALLY



16 March 2024

Start: Nanango Show Grounds

- Round 1 Motorsport Australia Queensland Rally Championship
- Round 1 Motorsport Australia Queensland 2WD Championship
- Round 1 Motorsport Australia Queensland Junior Championship
- Round 1 Motorsport Australia Queensland Novice Series
- Round 1 Motorsport Australia Queensland Clubman Series

With thanks to:



**Service Crew Instructions**

## SERVICE CREW INSTRUCTIONS

### Notes to Service Crews

As a sport, we gain Permits from Motorsport Australia, Qld Police Service, HQPlantations, and South Burnett/Somerset/Gympie Regional Councils and our actions are highly visible to the public and these organisations, therefore we request that all Service Crews drive in a courteous and professional manner that will be a credit to our sport.

If your competing crew is unable to continue during the event, every reasonable effort will be made to inform you of their location and what action needs to be safely taken, as is the case in all other rallies.

The organisers trust that you will have a safe and enjoyable event. Please refer to the following **Safety and Site Induction Notes**

Iain Robertson  
Clerk of Course

### Safety and Site Induction Notes:

1. Weather conditions in Nanango and Manumbar in March can be changeable. Attendees should ensure they have hats and sufficient water, food & protection from the sun and rain.
2. Wildlife including snakes are on the move in March. Attendees should be careful walking in grassed or wooded areas, wear suitable enclosed shoes and clothing and be careful of wildlife when driving.
3. The stages are in forestry areas so be aware of logging operations and large heavily laden logging trucks. Attendees should drive responsibly.
4. Rally Service Instructions include speed limits. **These are to be adhered to at all times.**
5. Roads in the Nanango, Manumbar and Gallangowan areas will be used by competing vehicles, service vehicles, officials, spectators and public traffic. Therefore, drivers must be attentive of vehicles unexpectedly turning or stopping and possible dusty conditions. Please drive safely at all times and comply with speed limits. Service vehicles will carry Event Signage, so be advised your presence is on show to the public at all times.
6. Toilets are located at the Nanango Showgrounds and the Manumbar Campdraft Grounds – Manumbar Service Park.
7. Food and drink will be available from the kiosk in the Manumbar Campdraft Grounds – Manumbar.
8. First aid is available at the Manumbar Campdraft Grounds – Manumbar Service Park.
9. All emergency communications must be conducted via Rally HQ.
10. Motorsport Australia OH&S policies will be applied within the Rally HQ, Service Park, Spectator Points and around all Special Stages.
11. No alcohol is to be consumed by Officials, Competitors or their Service Crews prior to the Event finishing.
12. The Organisers do not encourage pets (dogs, etc.) in the Service Park. If it is necessary that pets be brought to the Event they must be restrained by a collar and lead and kept under control at all times.
13. If you visit the Service Park with young children, keep them near you at all times as the Service Park in both Nanango and Manumbar Campdraft Grounds – Manumbar will be very busy with a lot of traffic. If you take children to Spectator Points please take special care to ensure their safety at all times.
14. Fire extinguishers must be ready for use when refuelling and refuelling can only occur in the designated area. All bulk fuel must be stored in the designated area. No smoking is permitted in or around the designated refuel area or around any vehicle being refuelled.
15. When using trolley jacks, have jack stands under the car.
16. If you witness or are involved in an accident or incident at any of the event locations or public area, you must report it to the Competitor Relations Officer or the Event Secretary.

**Everyone at this event has a responsibility to ensure not only their own safety, but also contribute to the safety of others in their vicinity. Think globally, act locally.**

**MOTORSPORT IS DANGEROUS**

## TRAVELLING TO THE APX SUSPENSION MANUMBAR RALLY

Service Crews have the choice of staying in Nanango and then travelling to Manumbar or vice versa Camp at Manumbar then travel to Nanango.

### TRAVELLING TO NANANGO SHOW GROUNDS FROM BRISBANE

From Brisbane take the Bruce Highway (M1) North then take the D'Aguilar Highway (E152B), Kilcoy Exit (off the Highway (not the Caboolture Exit), travel through Wamuran, Woodford and then into Kilcoy, continue on the D'Aguilar Highway through Moore, Blackbutt Yarraman and then Nanango. Once in Nanango Turn Left at the only traffic lights in town which is Drayton Street and then take the 4<sup>th</sup> left which is Cairns Street and the showgrounds are on the right.

Allow Approx 2 ½ hrs from Brisbane Central. Total Distance Approx. 180 kms.

### TRAVELLING TO MANUMBAR FROM BRISBANE

*PLEASE NOTE THERE ARE SOME GRAVEL ROADS ON THIS TRIP*

From Brisbane take the Bruce Highway (M1) North then take the D'Aguilar Highway (E152B), Kilcoy Exit (off the Highway (not the Caboolture Exit), travel through Wamuran, Woodford and then into Kilcoy with a Turn Right at the Roundabout signposted Kennedy Street.

Travel in a Northerly direction through Jimna then Turn Right at the cross roads signposted Manumbar Road with a short distance to the Manumbar Campdraft Grounds on the right.

Allow Approx 3 hrs. Total distance Approx. 170kms

### TRAVELLING FROM NANANGO TO MANUMBAR

*PLEASE NOTE THERE ARE SOME GRAVEL ROADS ON THIS TRIP*

Starting from the traffic lights in Nanango continue North for approximately 8.9 kms (hard to see) onto Manumbar Road. Continue straight for 39 kms, continue through the crossroads signposted Kilcoy Murgon Road/Manumbar Road with a short distance to the Manumbar Campdraft Grounds on the right.

Allow Approx 45 mins. Total Distance Approx. 48kms

### SERVICE LOCATIONS & TIME

**NANANGO** – There is one service at Nanango at approximately 1230 hrs with a time allowance of 15 minutes.

**MANUMBAR** – There is one service at Manumbar at approximately 1450 hrs with a time allowance of 20 minutes.

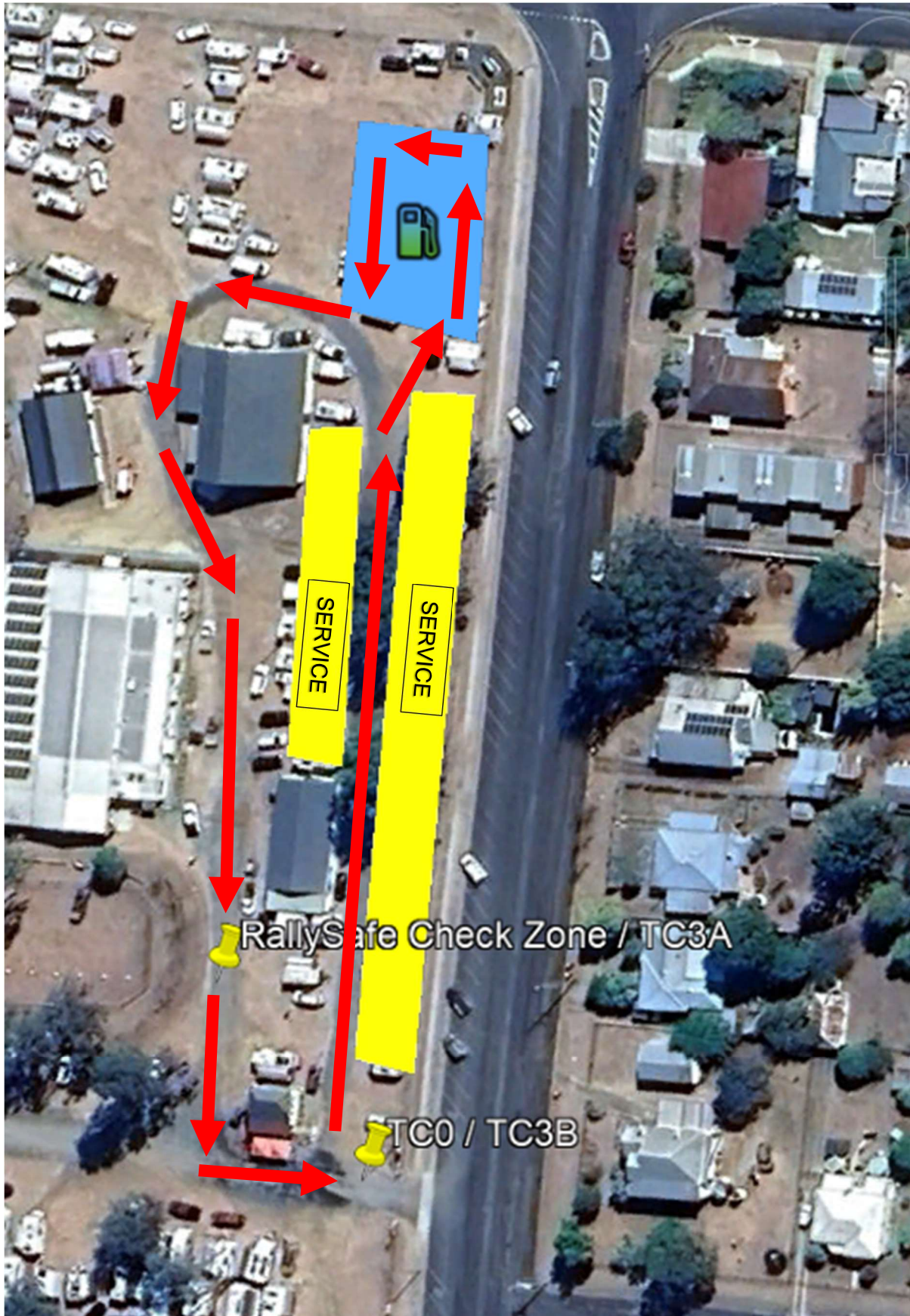
### WHAT FACILITIES ARE AT NANANGO?

98 Fuel is available at a number of service stations in Nanango.

Camping is available at the Nanango Show Grounds as well as a number of accommodation options.

Enter the showgrounds via Cairns Street in Nanango. Service area is on the right hand side as you enter the Showgrounds – no servicing anywhere else in the Showgrounds. **AS THERE ARE HORSES PRESENT, PLEASE REMAIN NEAR THE CAIRNS STREET END OF THE SHOWGROUNDS.**

Refueling is ONLY done in the designated area only or at the service stations in Nanango.



Scrutiny represents will be behind the Office on right as you enter the showgrounds and documentation will be in front of the office also on the right as you enter showgrounds.

Please note there will be NO scrutiny on Saturday morning at Nanango – Saturday is for represents only.

## WHAT FACILITIES ARE AT MANUMBAR?

*Please note:* there is no fuel at Manumbar.

There is camping at the Campdraft grounds plus showers/toilets and catering by the Manumbar Campdraft Association from Friday night through to Sunday morning. **ALL TRANSACTIONS WILL BE CASH ONLY!**



Entry is via Manumbar Road.

## REMOTE FUEL LOCATION

There is one remote refuel location between SS5 and SS6 (German 1). This is located on Porter Road Elginvale and the first car is due approx. 1400 hrs.

From Manumbar Campdraft Ground TL along Manumbar Road, in 500mtrs SO at XR then travel 9.5kms. TL at Porter Road and carry your fuel to the designated refuel area on the RHS of Porter Road. An official will be in place to guide you. You should allow 5 minutes to refuel.

### **MOTORSPORT IS DANGEROUS**

In exchange for being able to attend or participate in this event: You agree to release Motorsport Australia and Australian Motorsport Commission Ltd, promoters, sponsor organisations, land owners and lessees, organisers of the event, their respective servants, officials, representatives and agents (collectively, the "Associated Entities") from all liability for your death, personal injury (including burns), psychological trauma, loss or damage (including property damage) ("harm") howsoever arising from your participation in or attendance at the event, except to the extent prohibited by law; you agree that Motorsport Australia and the Associated Entities do not make any warranty, implied or express, that the event services will be provided with due care and skill or that any materials provided in connection with the services will be fit for the purpose for which they are supplied; and you agree to attend or participate in the event at your own risk.

You acknowledge that the risks associated with attending or participating in the event include the risk that you may suffer harm as a result of: motor vehicles (or parts of them) colliding with other motor vehicles, persons or property; acts of violence and other harmful acts whether intentional or inadvertent) committed by persons attending or participating in the event; and the failure or unsuitability of facilities (including grand-stands, fences and guard rails) to ensure the safety of persons or property at the event. You acknowledge that motorsport is dangerous and that accidents causing harm can and do happen and may happen to you.

You accept the conditions of, and acknowledge the risks arising from, attending or participating in the event and being provided with the event services by Motorsport Australia and the Associated Entities

