



# Briefing

## Spa - Francorchamps

### 4 en 5 oktober



**WESTFIELD CUP**  
p u u r r a c e n

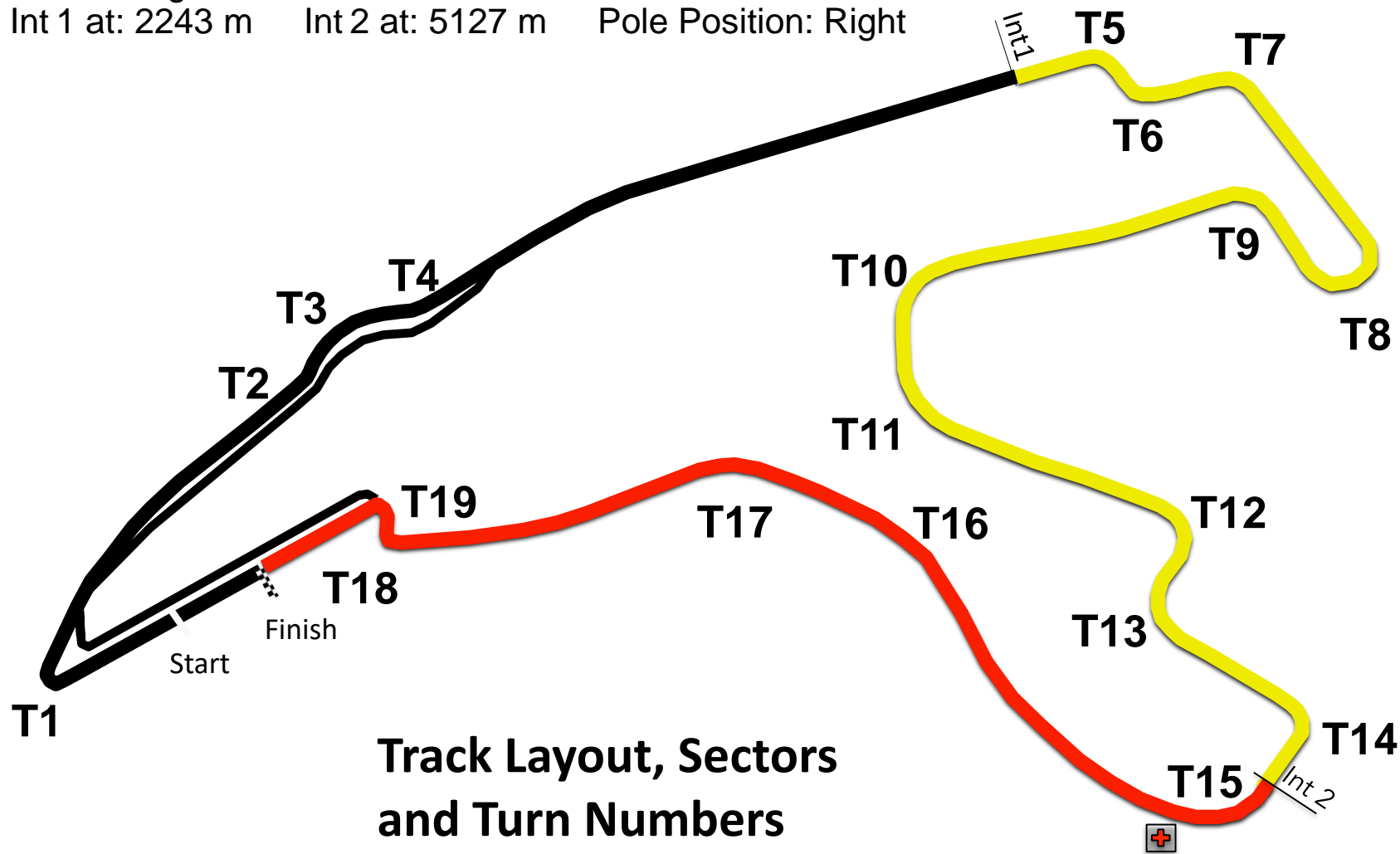
**MAX**  
CUP



**WESTFIELD CUP**  
p u u r r a c e n



Circuit length: 7004 m      Start line offset: 123 m  
Int 1 at: 2243 m      Int 2 at: 5127 m      Pole Position: Right





**WESTFIELD CUP**  
puur racen

# Finish-Control line





**WESTFIELD CUP**  
p u u r r a c e n



# PIT ENTRY After Turn 19





**WESTFIELD CUP**  
p u u r r a c e n

**MAX 5**  
CUP

# PIT EXIT





**WESTFIELD CUP**  
p u u r r a c e n

**MAX 5**  
CUP

# Pit Exit / White line





**WESTFIELD CUP**  
p u u r r a c e n

## Rolling Start

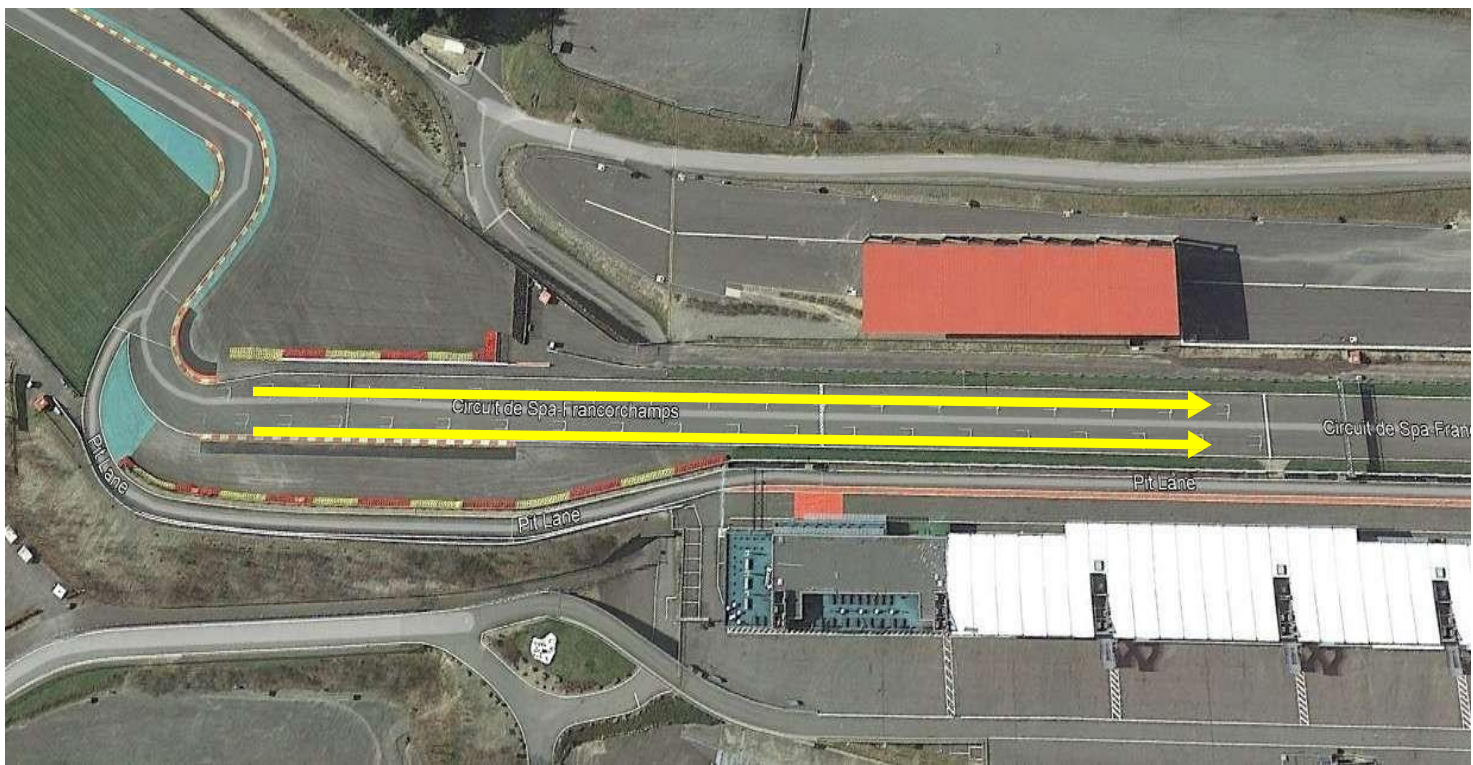
**MAX5**  
CUP



Start formation at T15  
Formation must be completed  
Before last chicane



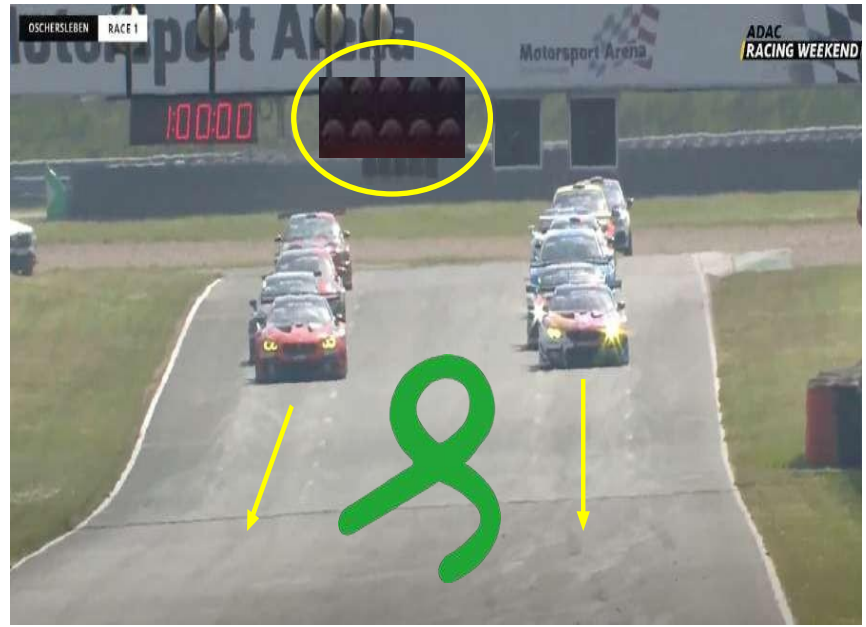
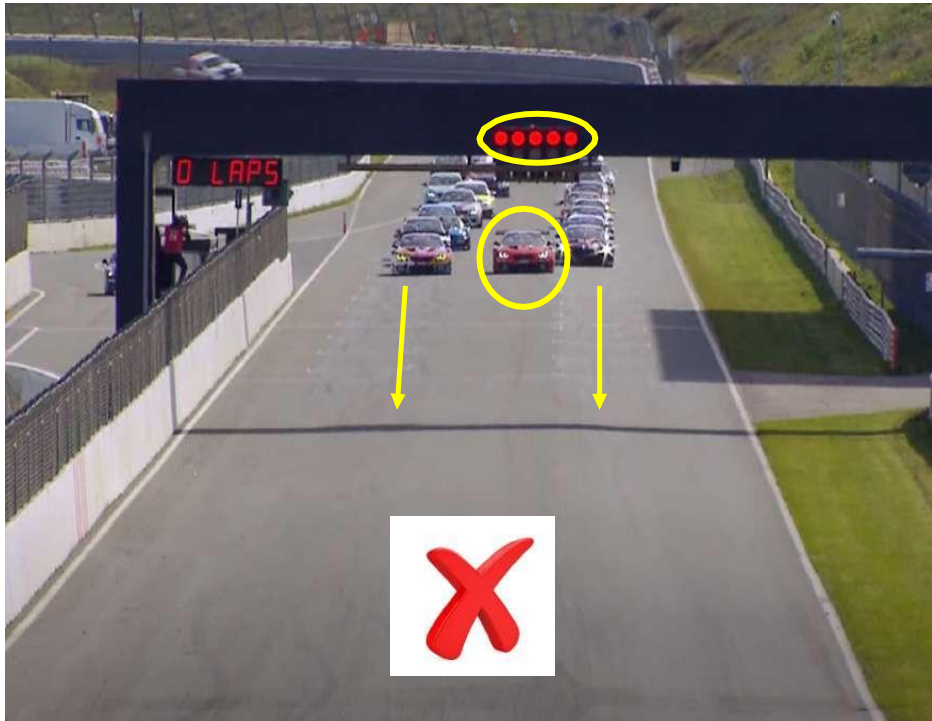
# Rolling Start – Drive Through Starting Boxes







# Rolling Start – Right Formation

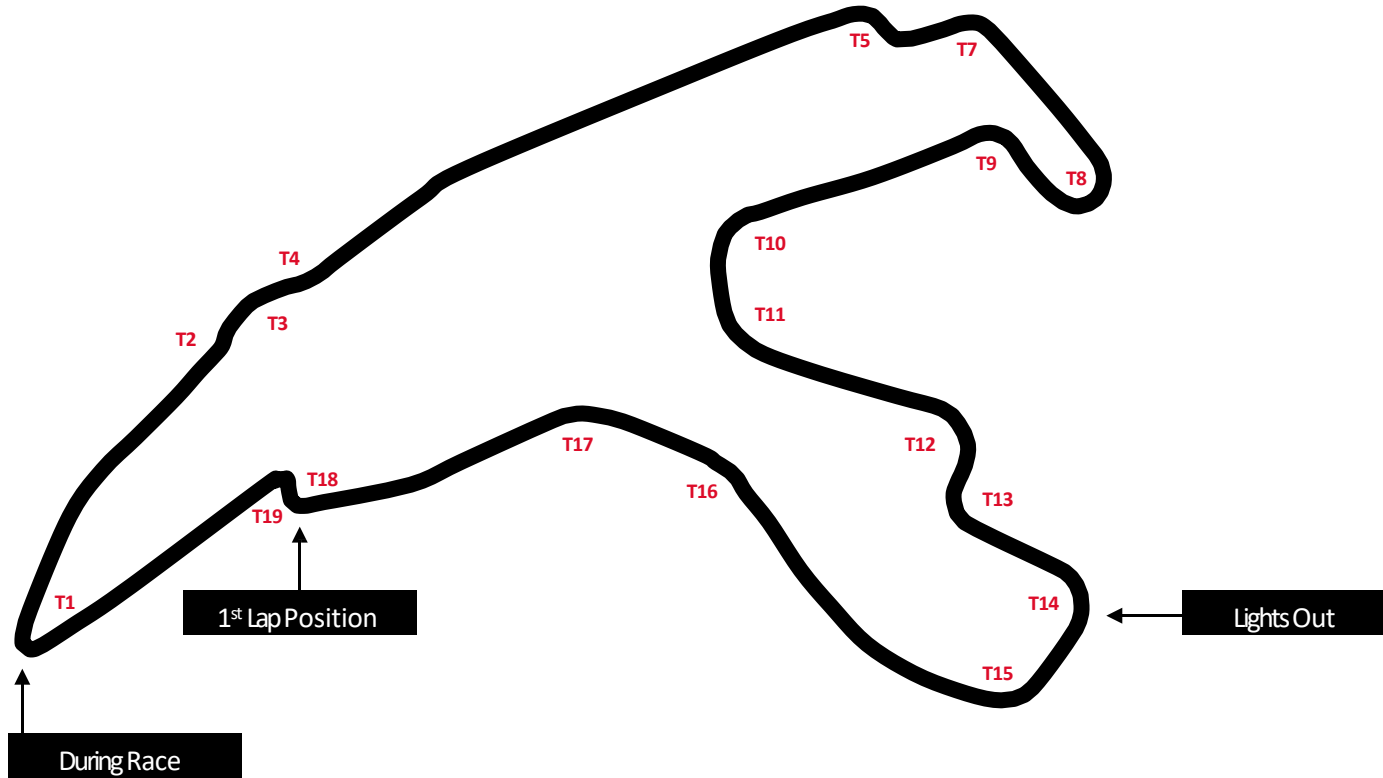


## FULL COURSE YELLOW

**FCY**

FULL COURSE  
YELLOW

- § Temporary track neutralisation in Qualifying or Race.
- § Max. Speed 80 km/h
- § Info through flags, boards and panels
- § Could be followed by SC Procedure in the Race





**WESTFIELD CUP**  
p u u r r a c e n



Flags and Digiflags have the same meaning

In case of contradicting flags: the safety flags go first



**WESTFIELD CUP**  
p u u r r a c e n

**MAX 5**  
CUP



- Reduce your speed!
- Single waved yellows: be prepared to change line
- Double waved yellows: be prepared to change line or to stop
- No overtaking till you past the green flag
- Signal of Danger

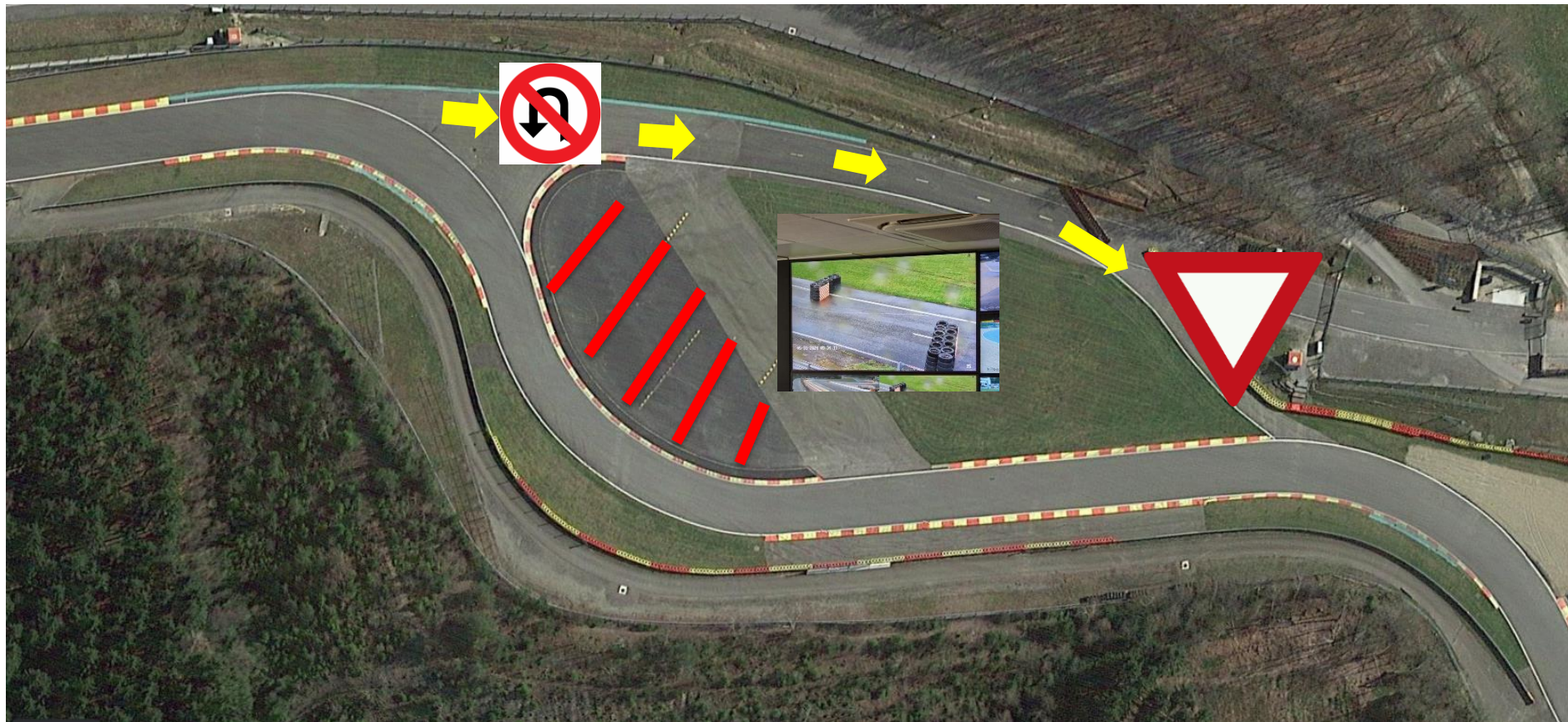


**WESTFIELD CUP**  
p u u r r a c e n



# Turn 5/6

## Escape road





**WESTFIELD CUP**  
puur racen

# Track limits



Turn 3  
Turn 10 – 11  
Turn 17  
Turn 18 -19

**THIS IS THE TRACK**  
**Including the white line**

**FIA code:** Drivers must use the track at all times.

For the avoidance of doubt, the **white lines defining the track edges are considered to be part of the track** but **the kerbs are not.**



**WESTFIELD CUP**  
p u u r r a c e n



## T3 ENTRY EN EXIT







**WESTFIELD CUP**  
p u u r r a c e n

**MAX 5**  
CUP

## Track Limits T12 (Pouhon)





**WESTFIELD CUP**  
p u u r r a c e n



## Track Limits T17





**WESTFIELD CUP**  
p u u r r a c e n



# Track Limits T19 (bus stop exit)





**WESTFIELD CUP**  
p u u r r a c e n

# Track Limits T19

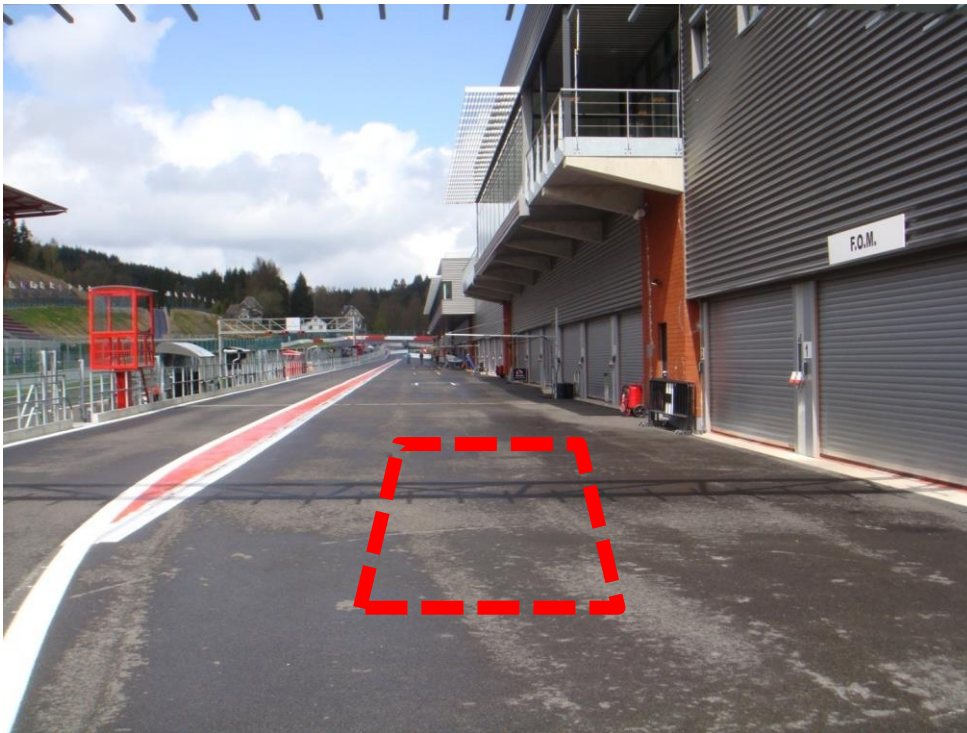




**WESTFIELD CUP**  
p u u r r a c e n



# Penalty box



- Technical Flag (Meatball)



- Black Flag



**WESTFIELD CUP**  
p u u r r a c e n

# Problems



- Oil leakage, blow ups as quickly as possible off track to a safe place (orange markings), do not continue driving on and spread oil all over the circuit.



- 
- If you have been in the gravel bed, please drive through the grass first to undo the car of gravel.



**WESTFIELD CUP**  
p u u r r a c e n

# Finish



- After the Finish flag,  
Leave track after Turn 1. Endurance Pit – Lane

## FCY

- Sector 1 1.41
- Sector 2 2.09
- Sector 3 1.25

Any  
Questions





**WESTFIELD CUP**  
p u u r r a c e n



Have a great day!