

Dear Madame, dear Sir,

By this letter we kindly remind you that for all FIM Enduro events, all participants will need to prepare their motorcycle and equipment in conformity with the 2026 Enduro Technical Rules. These rules can be downloaded here:

https://www.fim-moto.com/en/documents?tx_solr%5Bq%5D=enduro+technical

We want to focus your attention to these points:

3. ENDURO, SUPERENDURO, HARDENDURO World Championships, Cups and Prizes

Type of engine	Maximum Sound limit in [dB/A]	
	Before the race	During or after the race
All	111.0	112.0
2-stroke	(Target 109.0 + 2.0 for the precision of the method)	(Target 111.0 + 1.0 for the degradation of the silencer)
4-stroke		

Enduro		
up to 125 cc	2T	11000 rpm
Over 125 cc		9000 rpm
up to 250 cc	4T	12000 rpm
250 - 350 cc		11000 rpm
350 - 450 cc		10000 rpm
Over 450 cc		9000 rpm

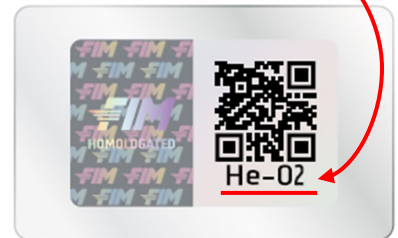
01.67 WEARING OF HELMETS

- A helmet is made to provide protection. A helmet is not a platform to attach foreign objects. Cameras or other accessories are NOT permitted nor shall be attached to the rider's helmet.

Helmets must conform to one of the recognised international standards:

FIM	FRHPhe-02
EUROPE	ECE 22-05 or ECE 22-06 (only "P" type)
JAPAN	JIS T 8133:2015 (only "Type 2 Full face")
USA	SNELL M 2015 or SNELL M 2020D or SNELL M 2020R or SNELL 2025R or SNELL 2025D

FRHPhe-02

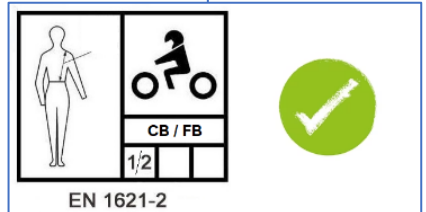


65.01.2 Back protector

It is compulsory that riders wear a back protector.

The back protector must be certified according the International norm:

- EN 1621-2, Level 1 or 2, only CB (Central Back) or FB (Full Back)



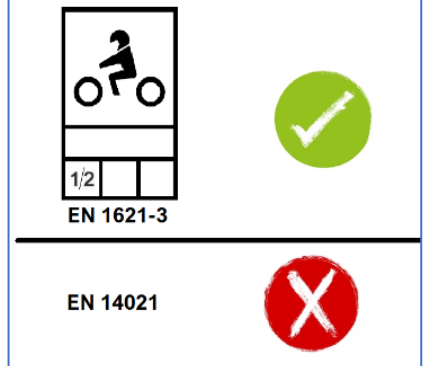
65.01.3 Chest protector

It is compulsory that riders wear a chest protector.

The chest protector must be certified according the International norm:

- EN 1621-3, Level 1 or 2

*The chest protector according to EN 14021 are forbidden.



Sincerely yours,
Miguel Sánchez Ungría
CTI Coordinator