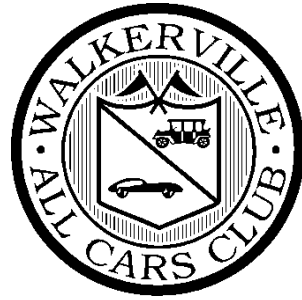


# 2023 Walkerville All Cars Club Walky Park



## Walky Park Series Safety Plan



## 1 EVENT DETAILS

### 1.1 Club / Promoter

1.1.1 The Walky Park Rallysprint Series, hereinafter referred to as "the Event", will be run by the Walkerville All Cars Club.

### 1.2 Event Venue

1.2.1 The event will be held at Walky Park, hereinafter referred to as "the Venue", north east of Truro off the Sturt Highway. The venue is located on Railway Road at point A on the map in section 7. The GPS Coordinates of the venue are: -34.347715, 139.376680. The venue is owned by the promoters. An aerial photo of the venue, showing track layout is at section 8.

### 1.3 Event Organisation

1.3.1 As per the event supplementary regulations.

## 2 EMERGENCY SERVICES

### 2.1 Medical Services

2.1.1 First Aid Officer(s) with a vehicle will be stationed at the venue for the duration of the competition. The name of the nominated First Aid Officer will be advised to the CoC and Stewards on the day. The nominated First Aid Officer will be responsible to the CoC. Competition will not commence until the First Aid Officers and vehicle are in place.

### 2.2 Venue and Response Details

2.2.1 The venue has a permanent building that can be used as a designated medical centre. Transport Vehicle will be provided to return patients to the Medical Center. This vehicle is not authorised to transport patients on public roads under emergency conditions. Mobile phones on the Telstra and Optus networks are effective from anywhere on the property.

### 2.3 Emergency Contact Details

2.3.1 In an emergency, the following contact numbers will be used:  
Ambulance, Police, Fire Services 000  
Nearest Hospital (Angaston) (08) 8563-8500

### 2.4 Hospital Details

2.4.1 The venue is located approximately 50 minutes by road from the nearest hospital which is located at Angaston. The Angaston Hospital address is:  
29 North Street,  
Angaston.  
The nearest qualified Medical Practitioner is the Doctor on Duty at Angaston Hospital.  
A map in section 7 shows the directions from the venue to the Angaston Hospital

## 3 PERSONNEL

### 3.1 Section Officials

3.1.1 Each section will have start/timing officials and observers. Section Officials will have 2 way radio communication with the CoC and other key officials.

## **4 SECTION PLAN**

### **4.1 Course Definition**

4.1.1 Each new course will commence with a single file, familiarisation run. The CoC's vehicle or substitute vehicle will lead the field at a slow pace so the competitors are in no confusion as to the required course.

### **4.2 Section Running**

4.2.1 The CoC will ensure that the track is clear, safe and ready for competition with all observers in place, by means of a radio check with those section officials, prior to any competitor being permitted to start.

4.2.2 The person(s) timing shall be able to see the finish point from near the starting and/or recording point or be in radio (uhf cb) contact with the finish point.

4.2.3 When the starter, is satisfied that driver and time keeper are ready, the driver will be given a green light on the traffic light system. All drivers will then have up-to 10 seconds to start the section.

4.2.4 All cars must come to a complete stop in the finish garage after the flying finish of each section. Failure to do so will be dealt with by the CoC.

### **4.3 Section Incident**

4.3.1 If there is an incident on track, all further competition on that track will be stopped immediately. The CoC will be responsible for coordinating any action required. Where possible, observers will be used to slow any other vehicles on track.

4.3.2 If the incident is a breakdown, competition will be resumed once the offending vehicle is either well off the tracks or has been recovered and officials are all back in place.

4.3.3 If the incident involves possible injury, the CoC will coordinate with the CSO and the St John First Aid Officers to determine the best course of action.

4.3.4 If it is necessary for the St John First Aid Officers and/or the Medical Response Vehicle to leave the venue, all competition will cease until suitable alternate arrangements can be made.

## **5 SPECTATORS**

### **5.1 Spectator Control**

5.1.1 Spectators will be restricted to the venue main building (including the viewing platform), pit area and the area immediately in front of the main building.  
Spectators will be managed by the officials on the day.

## **6 PHOTOGRAPHERS**

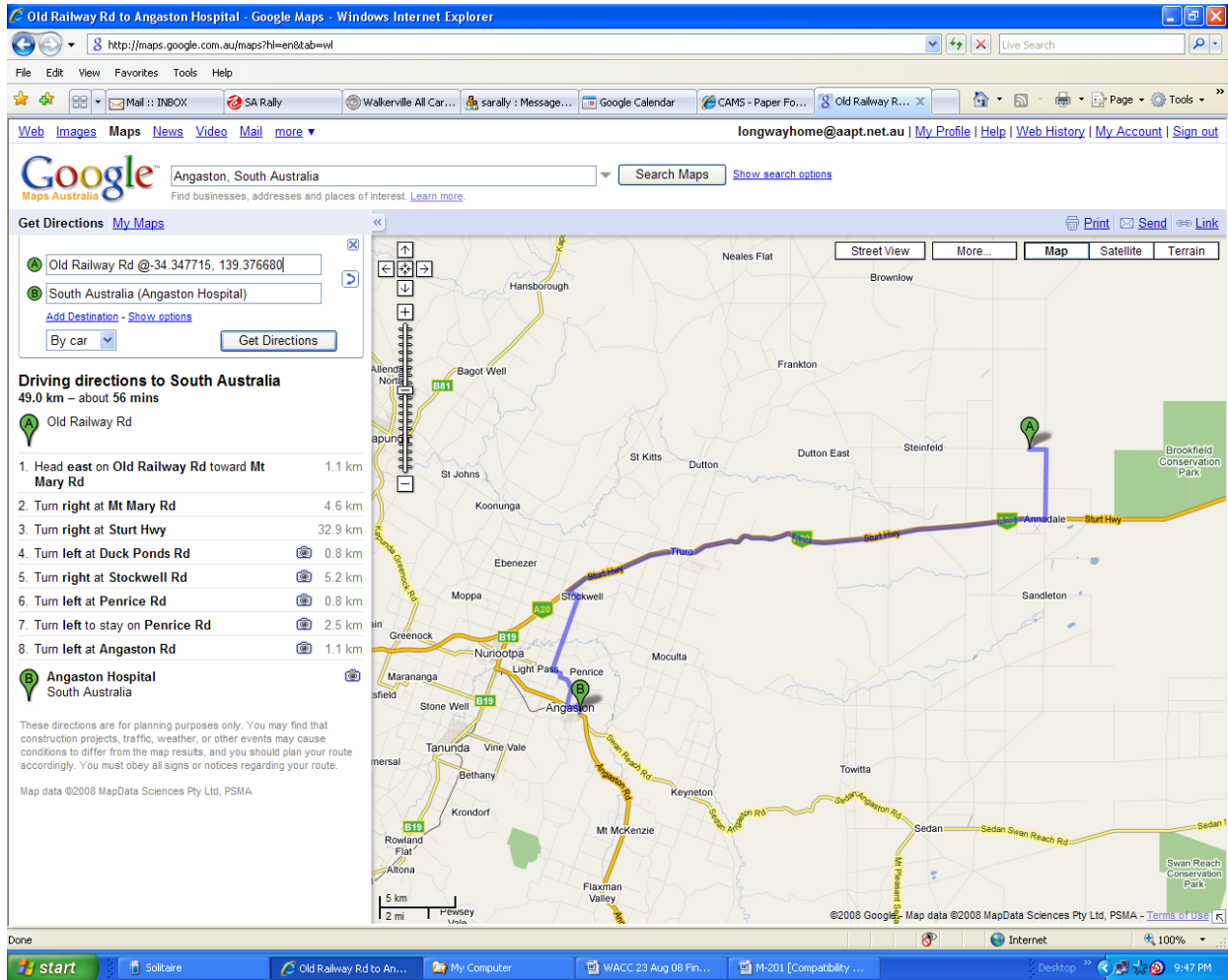
### **6.1 Event Photographers**

6.1.1 Any persons wishing to take photographs at points other than those described in paragraph 5.1 of this plan will be allowed to do so at the absolute discretion of the CoC.

6.1.2 Photographers must compile with the regulations as laid out in the series regulations and have approval from both the CoC and Media Coordinator.

6.1.3 Photographers must safety vests or other easily identifiable/visible clothing.

## 7 Emergency Map



## 8 Venue Aerial Photo

