



FIA  
**ASIA-PACIFIC**  
**RALLY**  
**CHAMPIONSHIP**



<https://rally-montre.com>



# モンテ

**MONTRE**  
7-9, June

# 2024



# Rally Guide 1



**[Attention]**

This document is prepared as a guide and has no regulatory value. For rules, please follow the 2024 FIA Regional Rally Sporting Regulations, 2024 FIA APRC Rally Championship Regulations, 2024 JAF National Sporting Regulations, 2024 JAF Japanese Rally Championship Regulations, 2024 JAF Japanese Rally Championship Unified Regulations, MONTRE 2024 Supplementary Regulations and Official Notices/ Bulletin.

## ◆◆◆ Contents ◆◆◆

<b>1. General Information</b>		<b>12. Reconnaissance(Recce)/GPS tracking</b>				
1.1	Overview	4	12.1	Recce procedure	20	
1.2	About MONTRE 2024	5	12.2	Recce vehicles	20	
1.3	The location of the event	6	12.3	Tyres for recce	20	
1.4	MONTRE 2024 Concept	9	12.4	Crew compliance requirements	20	
			12.5	Traffic control	20	
			12.6	GPS Tracking system	20	
<b>2. Organizer's contact details</b>		<b>13. Scrutineering / sealing and marking, advertising</b>				
2.1	Congress Secretariat	10	13.1	Official scrutineering	21	
2.2	Rally HQ	10	13.2	Post-rally scrutineering	22	
2.3	Media office and application procedure	10	13.3	Advertisement and rally plates	22	
2.4	Organizers	10				
2.5	Officials	11	<b>14. Shakedown</b>		22	
<b>3. Programme APRC/JRC</b>		<b>15. Start.</b>		22		
3.1	Schedule before the rally	12	<b>16. Finish.</b>		22	
3.2	Schedule during the rally	12	<b>17. Promotional activities</b>			
<b>4. Entries</b>		<b>17.1</b>		Press conference	22	
4.1	Title.	13	<b>17.2</b>		Rally Park	23
4.2	Entry criteria and number of entries	13	<b>17.3</b>		Ceremonial start	23
4.3	Entry accepted period.	13	<b>17.4</b>		Ceremonial finish	23
4.4	Where to enter	13	<b>17.5</b>		Post-rally Press conference	23
4.5	Entry method	13	<b>18. Media</b>		23	
4.6	Entry fees	14	<b>19. Credentials and vehicle passes</b>		23	
4.7	Entry packages	15	<b>20. Health and safety services</b>			
4.8	How to pay the entry fees	15	<b>20.1</b>		Emergency services.	24
4.9	Entry fees refunds	15	<b>20.2</b>		Medical facilities	24
<b>5. Service Park</b>		<b>20.3</b>		Towing service	26	
5.1	Service Park	16	<b>21. General information</b>			
5.2	Flexi-Service	16	<b>21.1</b>		Annaka city area	26
5.3	Notes on service application	16	<b>21.2</b>		Takasaki city area	26
5.4	Bringing Gasoline and Kerosene to the Service Park	16	<b>21.3</b>		Fujioka city area	27
5.5	Notes on Service Park	16	<b>21.4</b>		Tomioka city area	27
<b>6. Radio</b>		16	<b>21.5</b>		Shimonita town area	27
<b>7. Fuel and Tyres</b>		<b>21.6</b>		Kanna town area	27	
7.1	Fuel	16	<b>21.7</b>		Ueno village area	28
7.2	Tyres and Wheels	17	<b>21.8</b>		Nanmoku village area	28
<b>8. Procedures required to bring the vehicle and its parts to Japan and to operate it.</b>		<b>22. Other.</b>				
8.1	Japanese law/customs clearance procedures	17	<b>22.1</b>		Special Stage	28
8.2	Rules of vehicles	17	<b>22.2</b>		Inquire from sponsors and stalls in Rally Park	28
8.3	Conditions for driving in Japan.	18	<b>22.3</b>		Information of the other class	28
8.4	Insurance	18	<b>23. Itinerary (provisional version).</b>		29	
8.5	Differences in Japanese traffic laws.	19	<b>24. Course map (provisional version)</b>		31	
<b>9. Helicopters</b>		19	<b>25. Rally HQ / Service Park layout</b>		33	
<b>10. Hospitality arrangements</b>		19				
<b>11. Hotels/accommodation</b>		19				

◆◆◆ 1 General Information ◆◆◆

1.1 Overview



<b>Name of the rally</b>	<b>MONTRE 2024</b>
<b>Championship title</b>	FIA APRC Asia Rally Cup for Drivers and Co-Drivers FIA APRC Pacific Rally Cup for Drivers and Co-Drivers JAF Japanese Rally Championship 2024
<b>The prestige of the competition</b>	FIA International-standard; FIA Visa No.: APRC/24 JAF Domestic Standard; JAF Visa No.: 2024-1110
<b>Date of the event</b>	7 (Fri) - 9 (Sun) June 2024
<b>Type of the competition</b>	Special Stage Rally
<b>SS Course overview</b>	Paved roads (tarmac)
<b>Total dist./No. of SS</b>	Total SS distance: approx. 109km, Number of SS :10 (planned)
<b>Organised by</b>	JAF-accredited club: Toyota Motorsports Club (TMSC) JAF member club: Jyoshu Auto Club (JAC) JAF member organization: NPO MOSCO
<b>Event co-hosting</b>	Annaka City
<b>Supported by</b>	Gunma Prefecture, Takasaki City, Fujioka City, Tomioka City, Shimonita Town, Kanna Town, Ueno Village, Nanmoku Village
<b>Cooperation</b>	CARROSSER Co., Ltd., KIT Service Company Ltd., Cinq, JMRC Kanto Rally Committee, JMRC Gunma Rally Committee, JMRC Saitama Rally Committee, others

## 1.2 About MONTRE 2024

Prior to 1983, the Japanese Rally Championship was held in Gunma Prefecture under the name "Autumn Yamabiko Rally", but in 1984 the name was changed to "Montre" when many rally teams in Gunma joined forces to organise the event. After the name has been changed, the rally was held around the "Jomo Sanzan (Three Jomo Mountains)" of Mt. Akagi, Mt. Haruna and Mt. Myogi in Gunma, so it named from the French "three famous peaks" (mont tres) to the Latin The name "Montre" was adopted for the Japanese Rally held in Gunma.

Held annually from 1984 to 2003, "Montre" was a grand annual event that produced many famous rally drivers and a lot of drama, but due to an accident that occurred in 2003, the event was suspended from 2004 to 2011. During that time, the rally environment in the prefecture was reformed and the safety and operational systems were rebuilt, and in July 2012 the JAF Japanese Rally Championship Montre in Shibukawa was resumed with Shibukawa City in Gunma as the host town. The following year, 2013, a similar scale event was held in Shibukawa, attracting a large number of spectators over two days.

From 2014 to 2017, the rally was moved to Tsumagoi Village in Gunma, known as the "birthplace of motorsport", with the aim of holding a highly competitive rally. The rally attracted a lot of attention and many people enjoyed watching the rally.

From 2018, the surface has been changed from tarmac to gravel, resulting in a more attractive rally event, which will be held under the title FIA APRC Asia Rally Cup in 2019.

2020 was cancelled due to the impact of the new coronavirus infection.

From 2021, the field has been moved to the south-west of Gunma and the rally has been held in a setting that offers a rally experience not available at many Japanese rally events.

For 2023, the rally will take a break for a recharge period, and for this year, 2024, the rally base will be moved to Annaka City with the cooperation of Annaka City, and we are preparing to use the old road of Usui Pass and former Myogi Toll Road, made famous in the anime, as special stages for spectators to enjoy the MONTRE2024.

We hope that many entrants will join us and we look forward to seeing you there.

MONTRE 2024  
All members of the  
Organising Committee





## 1.3 The location of the event

### 1.3.1 Annaka City

Annaka is a core city located in the north-west of the Kanto Region, slightly south-west of central Gunma Prefecture.

It has long been located on the Nakasendo Highway, and during the Edo period, the post towns of Itabana, Annaka, Matsuida and Sakamoto flourished, and the Usui Sekisho, an important barrier on the Nakasendo Highway, was also located in what is now Yokogawa.

The city of Annaka is known as the birthplace of the 'onsen mark', Isobe Onsen, the Usui Pass Railway Cultural Village and Yokogawa, famous for its, are located in the city, as are the former Niiijima-jo Residence, the former Annaka Clan samurai tenement house and the Goryo Chaya Honjin. In May, one month before the MONTRE event, the Ansei Excursion Samurai Marathon (a p p r o x . 20 km from the samurai row houses in Annaka city centre to Sakamotojuku on the old Usui Pass road) is held every year, where people can run in costume. (Some years the event is not held due to COVID 19).



### 1.3.2 Takasaki City

Takasaki is a core city located in the north-west of the Kanto Region, slightly south-west of central Gunma Prefecture.

The city has long been a strategic transportation hub, being the junction of the Nakasendo (National Routes 17 and 18) and Mikuni Kaido (Gunma Prefectural Route 25, Takasaki Shibukawa Line), the Kan-etsu Expressway and Kitakanto Expressway, and the Joetsu Shinkansen and Hokuriku Shinkansen lines. Takasaki Station, where the Shinkansen stops, is also the gateway to Maebashi City, the capital of Gunma Prefecture, and is the transportation center of Gunma Prefecture.

In addition, Takasaki City has long been active in music-related activities, which has led the city to be known as 'Takasaki, the city of music' and the birthplace of the Gunma Symphony Orchestra, the pioneer of regional orchestras in Japan and the third longest-standing professional orchestra in Japan with more than two dozen groups. The Gunma Symphony Orchestra is still based there today, and it is the only city in Japan that is neither one of the three largest metropolitan areas nor the prefectural capital to have its own orchestra. The Gunma Music Centre, built in 1961 with the city's own budget and donations from the public, is also an iconic institution.



### 1.3.3 Fujioka City

Located in the south-west of Gunma Prefecture, Fujioka City has a total area of 180.29km<sup>2</sup>, with Mount Akakunawa (1,522m), Mount West Mikariboko (1,286m) and Mount East Mikariboko (1,246m) in the western part of the city and Shimokubo Dam in the southernmost part, and with the Ayukawa, Kabura, Karasu and Kanna rivers flowing through the city area, it is a beautiful city blessed with greenery and clear streams.

Fujioka City, which has prospered since ancient times, has many historic sites from the Stone Age and Kofun period. In the Muromachi period (1336-1573), Yamauchi Uesugi Norinami, who held the post of Kanto governor, built Hirai Castle. During the Edo period (1603-1868), the city flourished as a centre for the Hino silk industry, and after the Meiji period (1868-1912) it developed as a leading centre for sericulture, as represented by the Takayama Company, and as a centre for timber production.

The main tourist attraction is Sakurayama Park, which is open from November to December.

The 7,000 winter cherry trees bloom daintily through the month of May. The double-blooming winter cherry trees, which also bloom in spring, are designated as a national scenic beauty spot and a natural monument. From late April to mid-May, the 250m long wisteria trellis at Fuji no Saku Oka is filled with wisteria flowers, delighting the eyes of many visitors. The area is also home to the 'Takayama Shrine Site', which was inscribed as a World Heritage Site in 2014 as part of the 'Tomioka Silk Mill and Silk Industrial Heritage Group'.



### 1.3.4 Tomioka City

Tomioka City is located on the north-western edge of the Kanto Plain, with the Kabura River flowing from west to east through the centre of the city, and Mount Myogi, one of Japan's three most spectacular landforms, on the western edge of the city. Myogi, with its beautiful cherry blossoms in spring and red leaves in autumn. The Tomioka IC of the Joshinetsu Expressway is located within the city and there are seven railway stations on the Joshin Line of the Jyoshin Electric Railway.

Tomioka City also has the World Heritage-listed Tomioka Silk Mill in the city's urban area and the 1500-year-old Ichinomiya Nukisaki Shrine near Ichinomiya Station on the Jyoshin Electric Railway Jyoshin Line in the city. There is also the Prefectural Museum of History in the north of the city and the Gunma Safari Park in the south.



### 1.3.5 Shimonita Town

Shimonita is located in south-west Gunma Prefecture, in Kanra County. The town is mostly mountainous and complicated slopes with few plots of arable land, except for a small plain in the Kabura River basin in the eastern part of the town. It is an agricultural and mountainous village blessed with a beautiful mountain landscape and clear mountain streams, and has a long history as a prosperous town that prospered as a strategic point of traffic on the highway linking Makimashira and Shinshu in the old days.

Myogi Arafune Saku Kogen National Park stretches from the northern part of the town to the border with Nagano Prefecture in the west, and within this national park there are Mt Myogi and Mt Arafune, as well as Kouzu Farm, the first Western-style farm in Japan. The area is also home to many valuable geoscientific resources, and is recognised as a member of the Japan Geoparks Network as the Shimonita Geopark, and the Arafune Wind Cave is registered as a World Heritage Site. The famous Shimonita leeks and Shimonita konnyaku are among the local specialities, while Shimonita's gourmet specialities include Shimonita katsudon (pork cutlet served on top of a bowl of rice), a taste of Shimonita since the Taisho era, and Shimonita sukiyaki, a concentrated version of Shimonita's specialities.



### 1.3.6 Kanna Town

Kanna Town is located in south-west Gunma and is blessed with 'water' and 'greenery', with the Kanna River, which boasts the highest water quality in the Kanto region, flowing from east to west and surrounded by the mountains of the nature-rich West Jyoshu.

Kanna Town is famous as the 'Dinosaur Kingdom', as it was the first place in Japan where dinosaur footprint fossils were discovered. The town is also known as the originator of the first 'Koinobori' (carp streamer) event in Japan.

In spring, we welcome you to the "Koinobori Festival" where 800 carp streamers swim majestically in the sky, in summer to the "Kanna-no-Ryo" where you can enjoy the clear Kanna River, in fall to the "Kanna Mountain Run & Walk" where runners run around in the red-colored mountains of West Jyoshu, and in winter to the "Kanna Winter Illumination" where you can enjoy illumination using carp streamers that you cannot see anywhere else.



### 1.3.7 Ueno Village

Ueno Village is located in the southwestern most part of Gunma Prefecture, adjacent to Kanna Town in Gunma Prefecture in the east, Nanmoku Village in Gunma Prefecture in the north, Sakuho Town, Kita-Aiki Village, Minamiaiki Village, and Kawakami Village in Nagano Prefecture in the west, and one city, two towns, and three villages in Chichibu, Saitama Prefecture in the south.

The village area is surrounded by 1,000- to 2,000-meter-high mountains such as the Mikabo-Arafune Mountain Range and the Mikuni Mountain Range, with steep mountains and fields covering more than 90% of the total area of 181.86km<sup>2</sup>, forming a typical mountain village environment.

The main roads are National Route 299 along the Kanna River and National Route 462 following it, which take about 80 minutes each to the Fujioka and Chichibu urban areas, and about 40 minutes to the Shimonita Interchange on the Jyoshinetsu Expressway via the Yunosawa Tunnel. The Kanna River, which flows through the center of the village, belongs to the Tone River system, which provides water resources for the Kanto region, and is made up of numerous mountain streams that originate in the deep mountains. Its clear and rich streams nurture iwana (char) and yamame (landlocked salmon), which are mountain stream fish of the salmon family, and breeding sculpin can be seen in the river. In addition, the Kanna River was certified as the "cleanest river in the Kanto region" in a water quality survey conducted by the Ministry of Land, Infrastructure, Transport and Tourism for four consecutive years from 2004 to 2007, and in 2008, the "Kanna River headwaters" in the village area was selected as one of the "100 best waters of the Heisei era" by the Ministry of the Environment.

In order to preserve the rich nature of Ueno Village, which still retains its prehistoric appearance, for future generations, we will make efforts to protect and maintain it, and to achieve the stable existence of the Ueno Village community. In order to achieve this goal, we are striving to create a village that attracts many people who wish to settle down.



### 1.3.8 Nanmoku Village

Nanmoku Village is a mountain village 15 km east-west and 8km north-south, surrounded by mountains from 800 m to around 1,400m above sea level.

In spring, go hiking, gathering wild vegetables and wildflowers in the fields where Katakuris and Hitotsubana. In summer, go fishing, playing in streams and visiting waterfalls in mountain streams where char and landlocked salmon are abundant. In autumn, enjoy the autumn colours of the leaves while gathering mushrooms and nuts. In winter, go hiking in the sun while stepping on dead leaves. Why not experience the changing natural time of Nanmoku in each of the four seasons, surrounded by the heart of Mother Nature?





## 1.4 MONTRE 2024 Concept

"Montre" is held in Gunma, the most active rally area in Japan, and along with the Rally of Tsumagoi in February, it is the most popular All-Japan rally in the metropolitan area, and is said to be a coveted event in which rallyists from all over the country aim to compete. The event is run with the understanding and cooperation of the local government, local residents, police, and other related government agencies.

This year, Toyota Motorsports Club, Jyoshu Auto Club, and NPO MOSCO will be in charge of the overall management of the event, and the "Montre 2024 Organizing Committee" will be formed by elected management executives from the Kanto area, The committee is now preparing to build an exciting and attractive rally for participants in Annaka and Fujioka cities, Takasaki, Tomioka, Shimonita, Kanna, Ueno, and Nanmoku villages in the southwestern part of Gunma Prefecture.

Montre has been attracting many spectators (galleries) as the closest Japanese Championship Rally event to the Tokyo metropolitan area, and with the addition of the FIA APRC ASIA RALLY CUP title. And also, before the spread of the COVID 19, Rally of Tsumagoi had a great success with approximately 20,000 galleries in the spectator stages and rally park over the two days.

This year, the rally will be held in the western part of Gunma Prefecture, centered on Annaka City, which is easily accessible from the Tokyo metropolitan area. We will post information about the spectator stages and the rally park on our website as needed, Please check our website for information on spectator stages and the rally park.



◆◆◆◆ 2 Organiser contact details ◆◆◆◆

2.1 Congress Secretariat

**MONTRE 2024 Secretariat (in NPO MOSCO Takasaki Office)**

2458-13, Kurgano-cho, Takasaki city, Gunma 370-1201

tel +81 (0)27-386-4365 / fax +81 (0)27-386-4375

Website : <https://rally-montre.com>

Email : [office@rally-montre.com](mailto:office@rally-montre.com)



2.2 Rally HQ

**Annaka Shinkumi Sports Centre**

1531-1 Annaka, Annaka city, Gunma 379-0116

Rally HQ dedicated phone TEL +81(0)27-386-4365

(forwarded call)

Website : <https://www.city.annaka.lg.jp/page/2388.html>



2.3 Media office and application procedures

**MONTRE Media Office (in NPO MOSCO Takasaki office)**

2458-13, Kurgano-cho, Takasaki, Gunma 370-1201

tel +81(0)27-386-4365 / fax +81(0)27-386-4375

<https://rally-montre.com/media>

Email : [media@rally-montre.com](mailto:media@rally-montre.com)

To cover MONTRE 2024, you need to pre-register.

Pre-registration: From 10 April to 16 May 2024 on the 'Media page on the MONTRE website' above.



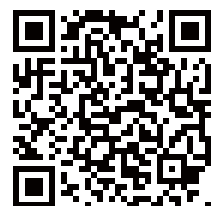
2.4 Organisers

◇ **Toyota Motorsports Club=TMSC (JAF accredited club 13001)**

Toyota Kudan Building B1, 2-3-18 Kudan Minami, Chiyoda-ku, Tokyo 102-0074, Japan

tel +81(0)3-3221-9950 fax +81(0)3-3221-9924

Website: <https://toyota-motorsports-club.jp>



◇ **Jyoshu Auto Club=JAC (JAF member club 10003)**

128-2, Kamikobayashi-cho, Ota-city, Gunma 373-0024

Tel +81(0)276-25-0114 fax +81(0)276-25-6996



◇ **NPO MOSCO (JAF member organisation 10003)**

2458-13, Kurgano-cho, Takasaki, Gunma 370-1201

tel +81(0)27-386-4365 fax +81(0)27-386-4375

Website:<https://www.n-mosco.com>

Email: [office@n-mosco.com](mailto:office@n-mosco.com)



## 2.5 Officials (tentative)

### organizing committee

Chairperson of the organizing committee	Haruo Takakuwa	( Board Chairperson of NPO M.O.S.C.O. )
organizing committee member	Masanori Sekiya	( Chairperson of Toyota Motor Sports Club )
	Takayuki Koseki	( President of Jyoshu Auto Club )
	Hiroshi Suzuki	( MOSCO )
	Mamoru Namiki	( President of NPO Gunma Rally Network )

### Stewards

Chairperson of the APRC Steward	Willard MARTIN (NZL)
APRC Steward	Manoj DALAL (IND)
APRC Steward	TBA (ASN)
APRC Steward Secretariat	Akira KAWADA
FIA Observer	Manoj DALAL (IND)
Chairperson of the JAF Steward	Takahito MIYAGI (JAF)
JAF Steward	Tadayoshi SATO (JAF)
JAF Steward	Takahisa OGUCHI
JAF Observer	Shigeyuki GOTO (JAF)
JAF Observer	Jun FUNAKOSHI (JAF)
JAF Technical Advisor	Takuya SUGIMURA (JAF)

### Senior official

Clerk of the Course ( COC )	Mitsuhiro FUJITA	( MOSCO )
Deputy Clerk of the Course( DCOC )	Sadatoshi ANDO	( MOSCO )
Deputy Clerk of the Course ( DCOC )	Nao ONODERA	( MOSCO )
Assistant Clerk of the Course ( Course )	Yukinori FUKUMURA	( Umegumi )
Assistant Clerk of the Course (Timekeeping)	Naoki KUROSAKI	( PRESTIGE )
Assistant Clerk of the Course (Results)	Masaya YAMAGUCHI	( MOSCO )
Chief Scrutineer	Toshiaki ORIHARA	( RSCC )
Chief Secretariat	Motokuni Horiguchi	( CORSA )
Assistant Secretariat	Koji TAKAHASHI	( MOSCO )
Media Officer	Masayoshi NAKAJIMA	
Chief Safety Officer	Hirokazu SOMEMIYA	( RallyStream )
Chief Medical Officer	TBA	
Doctor	Hitoshi ATOMI	( Surgeons )
Service park Coordinator	Hiroshi TAKAHASHI	( MOSCO )
Regroup Coordinator	Yoshitaka SASAKI	( MOSCO )
Regroup & Service Park Official	Takayasu MARUYAMA	( RSCC )
Web Coordinator	Takayuki KOSEKI	( JAC )
Competitor Relations Officer (CRO)	Naoto MARUYAMA	( MSCC )



## ◆◆◆◆ 3 Programme ◆◆◆◆

### 3.1 Schedule before the rally (tentative)

Date	Hours	Items	Location
MON 8 APR	9:00	Publication of Supplementary Regulation	<a href="#">Website</a>
WED 10 APR	9:00	Entries open	<a href="mailto:entry@rally-montre.com">entry@rally-montre.com</a>
	9:00	Media registration open	<a href="mailto:media@rally-montre.com">media@rally-montre.com</a>
FRI 03 MAY	21:00	Closing date for early bird entries	<a href="mailto:entry@rally-montre.com">entry@rally-montre.com</a>
MON 13 MAY	9:00	Publication of Rally Guide 2	<a href="#">Website</a>
THU 16 MAY	21:00	Closing date for entries	<a href="mailto:entry@rally-montre.com">entry@rally-montre.com</a>
	21:00	Closing date for Media registration	<a href="mailto:media@rally-montre.com">media@rally-montre.com</a>
TUE 28 MAY	21:00	Publication of Entry List	<a href="#">Website</a>
SUN 2 JUN	21:00	Publication of Road Book and Route Map	Secretariat

### 3.2 Schedule during the rally (tentative)

Date	Hours	Items	Location
THU 6 JUN	14:00-21:00	Rally Headquarter (HQ) opens	Annaka Shinkumi Sports Center Gymnasium
	15:00-20:30	Service Park opens	Annaka Shinkumi Sports Centre Parking
	15:00-20:00	Service registration 1	Rally HQ
	16:00	Official Notice board set up	<a href="#">Website</a>
	16:00-20:00	Administrative Check 1/ Recce registration 1/Distribution of Road Books and other materials	Rally HQ
FRI 7 JUN	05:00-20:00	Rally headquarters (HQ) opens	Annaka Shinkumi Sports Centre Gymnasium
	05:00-19:30	Service Park opens	Annaka Shinkumi Sports Centre parking
	05:30-08:00	Administrative Check 2/ Recce registration 2/ Distribution of Road Books and other materials	Rally HQ
	06:00-11:00	Service reception	Rally HQ
	06:30-17:40	Reconnaissance start/finish	
	08:00-12:00	Media reception	Media Center at Annaka Shinkumi Sports Centre Gymnasium
	09:00-17:00	Official Scrutineering	Scrutineering bay at Annaka Shinkumi Sports Centre Parking
	12:00-12:30	Media briefing	Media Center
	17:00-	1 <sup>st</sup> Steward Meeting	Steward Room at Annaka Shinkumi Sports Centre Gymnasium
	17:30-18:00	Press Conference	Media Center
SAT 8 JUN	06:00-22:00	Rally Headquarter (HQ) opens	Annaka Shinkumi Sports Center Gymnasium
	06:00-21:30	Service Park opens	Annaka Shinkumi Sports Centre Parking
	8:00-	LEG1 Rally Starts	Annaka Shinkumi Sports Center Parking
	18:28*	LEG1 Finish	Annaka Shinkumi Sports Center Parking
	19:00*	Publication of LEG2 Starting list	<a href="#">Website</a>
SUN 9 JUN	05:00-20:30	Rally Headquarter (HQ) opens	Annaka Shinkumi Sports Center Gymnasium
	05:00-20:00	Service Park opens	Annaka Shinkumi Sports Center Parking
	6:30-	LEG2 Rally Starts	Annaka Shinkumi Sports Center Parking
	15:15*	Rally Finish	Annaka Shinkumi Sports Center Parking
	15:20*	Final Scrutineering (APRC)	Scrutineering bay at Annaka Shinkumi Sports Center Parking
	15:40*	Final Scrutineering (JRC and others)	Scrutineering bay at Annaka Shinkumi Sports Center Parking
	16:00-16:30	Post-rally Press Conference	Media Center
	17:00*	Publication of Provisional Classification	<a href="#">Website</a>
17:30*	Publication of Official Classification	<a href="#">Website</a>	

\*planned

◆◆◆◆ 4 Entries ◆◆◆◆

#### 4.1 Title

##### 1. FIA Title

- FIA APRC Asia Cup for Drivers and Co-Drivers
- FIA APRC Pacific Cup for Drivers and Co-Drivers

##### JAF Title.

- 2024 Japanese Rally Championship

#### 4.2 Entry criteria, number of entries

This rally is an international rally, but from 2022, holders of domestic licenses issued by the ASN of the host country will be able to participate without having to switch to an international license.

Holders of licenses issued abroad must obtain a permit from the ASN of that country or a stamp of confirmation on the entry form.

The maximum number of entries for all categories is 70. If more entries are received, the organizers reserve the right to make selections and applicants will be guaranteed entry into the APRC ASIA / PACIFIC RALLY CUP.

A entry to the APRC ASIA / PACIFIC RALLY CUP requires a entrant license in addition to a competition license, even if the driver and entrant are the same.

#### 4.3 Entry acceptance period

Entry Registration opens 10 April 2024 (WED) 9:00

Entry Close: 16 May 2024 (THU) 21:00

Participants who wish to request the Secretariat to process their insurance coverage effective for this rally must apply by April 30.

#### 4.4 Where to enter

Address : 2458-13 Kuraganocho, Takasaki-city, Gunma 370-1201  
 NPO M.O.S.C.O. Rally Montre Secretariat Office

Tel : +81(0)27 386 4365

Fax : +81(0)27 386 4375

E-Mail : [entry@rally-montre.com](mailto:entry@rally-montre.com)

URL : <https://rally-montre.com>



#### 4.5 Entry method

Entries must be made by filling in the form prescribed by the organizer and emailing it to the rally office above during the application period.

E-mail: [entry@rally-montre.com](mailto:entry@rally-montre.com)

(applications by post/fax will not be accepted)

Of the documents listed below, the original copy of the *Entry Form* and the *Driver Declaration and Undertakings* must be signed and submitted at the time of entry registration.

##### 4.5.1 Documents to be submitted for APRC CUP

- Entry form for APRC
- Promotional information
- Entry booklet/Entry order forms
- Application form for the on-board camera (if an on-board camera is used).
- Copies of competition licenses for entrants, drivers and co-drivers, and copies of driving licenses.
- A copy of the vehicle inspection certificate (for vehicles registered in Japan only).
- Carnet certificate issued by the country of vehicle registration (for vehicles temporarily imported from abroad).
- Documents required to apply for a temporary operating permit (applicable vehicles only)
- A copy of the automobile insurance policy valid for the rally or a rally insurance application form.
- Image data (driver, co-driver and rally car)
- Driver Declaration and Undertakings (Original copy to be submitted at Administrative Checks)

#### 4.5.2 Documents to be submitted for Japanese Rally Championship and other classes

- Entry form for JRC
- Vehicle declaration form
- Service registration form
- Promotional information
- Entry booklet/Order form, payment details
- Registration form for on-board camera (if an on-board camera is used)
- Copies of competition licenses for entrants, drivers and co-drivers, and copies of driving licenses
- A copy of the vehicle inspection certificate
- Carnet certificate issued by the country of vehicle registration (vehicles temporarily imported from abroad)
- Documents required to apply for a temporary operating permit (applicable vehicles only)
- A copy of the automobile insurance policy valid for rally or a rally insurance application form.
- Image data (driver, co-driver and rally car)
- Driver Declaration and Undertakings (Original copy to be submitted at Administrative Checks)

#### 4.6 Entry fees

##### 4.6.1 FIA APRC Asia / Pacific Rally Cup and Japanese Rally Championship JN1 class

Regular fee: 220,000 yen per car

Early Bird Special Price: 210,000 yen per car (for participants who complete the registration procedure by May 3, 21:00)

\*All JN1 class entries in the Japanese Rally Championship can obtain registration with the APRC.

##### 4.6.2 Japanese Rally Championship (JN2 ~ JN6 Classes and Other Class)

Regular fee 190,000 yen per car

Early Bird Special Price: 180,000 yen per car

(for participants who complete the registration process by May 3, 21:00)

##### - Common to 4.6.1 and 4.6.2 above -

The above fees include the contents of 4.7 Entry Packages and do not include lodging and meals. A ¥5,000 administration fee will be charged for each application or change of registration details (including additions, corrections, and additional submissions due to incompleteness) made after the application deadline.

##### 4.6.3 Temporary Number Plate / Operation Permit for APRC/JRC JN-1 Class

In addition to the above amounts, a fee for obtaining a temporary operating permit is required. Please complete the entry booklet to apply.

##### 4.6.4 Early Bird Special Price

The Early Bird Special Price will be applied to all entries for the APRC ASIA RALLY CUP and the Japanese Rally Championships and other classes, provided that all documents except for the above 4.5.1 (APRC ASIA RALLY CUP) or 4.5.2 (Japanese Rally Championships and other classes) have been submitted and the entry fee payment has been confirmed by the deadline. Please note that credit card payments are not eligible. In addition, in the event of any changes in content, replacement, correction, addition, or submission of additional documents, the Early Bird Special Price will not be granted, and an administrative fee of 5,000 yen per entry will be charged.



### 4.7 Entry packages

	APRC Asia Rally Cup APRC Pacific Rally Cup JRC JN1 Class	JRC JN2 – JN6 Class Other Class
Rally Guide 1	Website	Website
Supplementary Regulations	Website	Website
Rally Guide 2	Website	Website
Road Book	2	1
Route Map	2	1
Official Programme	4	2
Entrant Pass	2	2
Service Crew Pass	5	5
Guest Pass	1	-
Service Vehicle Pass	2	1
Service Park space	5.0m x 10.0m	5.0m x 7.5m

Requests for additional documents or passes as listed above should be made in the entry booklet and submitted.  
Also, requests for additional spaces or additional vehicle parking passes will not be accepted due to the lack of space in the Service Park.

### 4.8 How to pay the Entry Fees

Please transfer the entry fee and other payments to the following account at the same time of registration.

Wire Transfer Instructions  
 Payment Currency : Japan, Yen (JPY)  
 Bank Name : Gunma Bank Numata-branch  
 City, Province or Territory: Numata-city, Gunma Country :Japan  
 Bank Account Number :210-1482223  
 Account Name :Tokuteihieirikatsudouhoujin M.O.S.C.O..

Payments must be in Japanese yen only and all remittance charges must be borne by the entry. Cheques are not acceptable.

If you wish to pay by credit card, please pay through the website below. Please note that credit card payments are not eligible for the special early registration fee.

<https://rally-montre.com/checkout/>



### 4.9 Entry fees Refunds

Entry fees are fully refundable in the following cases

- 1) If the entry is not accepted (refund minus an administration fee of JPY 2,000)
- 2) If the rally is not held (full refund minus bank transfer fee)  
 However, if the rally is cancelled 15 days or more before the rally due to a major disaster or travel restrictions caused by the COVID 19, approximately 70% of the total participation fee will be refunded.
- (3) 50% of the total participation fee will be refunded if a participant is unable to compete due to force majeure (as duly certified by the respective ASN).

## ◆◆◆ 5 Service Park ◆◆◆

### 5.1 Service Park

The Service Park will be located in the parking lot of the Annaka Shinkumi Sports Centre, Annaka-city, Gunma. The Service Park surface is paved .

The Service Park will open at 15:00 on Thursday 6 June.

\*No entry to the service park before hours at all.

### 5.2 Flexi-Service

All participating crews can do the flexi-service.

### 5.3 Notes on Service Application

We will not be accepting requests for additional space in the Service Park as we do not have enough space available for this rally. If you are planning to jointly service with another team, please make a request for this at the time of registration.

### 5.4 Bringing Gasoline and Kerosene to the Service Park

Gasoline and Kerosene must be brought into the Service Park in metal carrying cans, with a maximum of less than 40 liters per team. Please be careful to avoid fire when storing these items.

### 5.5 Notes on Service Park

- There are no parking spaces for service-related vehicles in the Service Park other than the spaces allocated to entrants. Large vehicles such as loaded vehicles and other vehicles for transportation as indicated on the service application should park in the designated areas. Parking spaces are limited, so please be sure to apply for a vehicle on the service application.
- Please be aware that the Service Park is subject to gusty winds, so please be prepared with appropriate clothing and take measures to prevent service tents and other equipment from being blown away by strong winds.
- There are no garbage cans in the Service Park, so please be sure to take all garbage home with you.
- Smoking is not permitted in the Annaka Shinkummi Sports Center, except in the smoking area.
- When using jacks, rigid racks, etc., please protect the pavement surface by using a plate or something similar.
- When servicing vehicles, please protect the pavement surface with blue sheets, etc. so as not to contaminate the pavement.
- Fire is strictly prohibited in the service park.

## ◆◆◆ 6 Radio ◆◆◆

The use of radio in Japan is strictly regulated. If you wish to use a radio device, please fill in the radio station application form with the required information such as the frequency, model number and output power of the device and submit it to the Secretariat by 30 April. Depending on the submitted radio station application form, the equipment may not be used in Japan.

## ◆◆◆ 7 Fuel/Tyres ◆◆◆

### 7.1 Fuel

APRC entrants are allowed to use FIA fuel that complies with Art. 252.9 of the Appendix J of the FIA ISC. In such cases, entrants must make their own arrangements and bring their own fuel to the location designated by the organizer.

Competitors in the Japanese Rally Championship and other classes must refuel at the fuel stations designated by the organizer in the Road Book from the end of the official scrutineering to the rally finish.

## 7.2 Tyres and Wheels

### 7.2.1 APRC ASIA RALLY CUP / PACIFIC RALLY CUP entrants

7.2.1.1 Hand-cut and tread pattern changes are allowed and no Tyre marking will be performed.

7.2.1.2 Tyre usage will not be limited. However, entries that also wish to receive points from the Japanese Rally Championship must comply with 7.22.

### 7.2.2 Japanese Rally Championship and other classes entrants

7.2.2.1 Tyre and wheel usage rules will be in accordance with the 2024 Japanese Rally Championship Unified Regulations.

7.2.2.2 Tyre warming (i.e. meandering, sudden acceleration and deceleration, etc.) is strictly prohibited in the liaison section. Crews engaging in Tyre warming will be reported to the Stewards and penalties up to disqualification will be applied.

## ◆◆◆ 8 Procedures required to bring vehicles and parts to Japan and to operate them ◆◆◆

### 8.1 Japanese law / customs clearance procedures

The documents and points to note for customs clearance procedures are as follows.

#### (1) FIA Carne

The FIA Carnet is required whenever a vehicle registered abroad, such as a rally car, wrecked vehicle or service vehicle, is driven in Japan. The carnet is issued by the ASN of the country where the vehicle is registered. When clearing customs with the FIA Carnet, a Carnet Certificate issued by the JAF is required. Please contact your organiser to obtain this certificate. The carnet and this certificate may be required to be presented by the police or other authorities while the vehicle is in use. Please be prepared to show them at any time. All vehicles on public roads must have liability insurance, regardless of the country of registration of the vehicle in question. ( This is currently being coordinated by ATA Carnet with the relevant ministries, but only in the following Geneva Convention-registered countries).

Note: If you are importing a vehicle from a country outside the Geneva Convention ('Convention on Road Traffic', 1949, Geneva), the vehicle must be inspected and registered in Japan on arrival, even if it has an FIA Carnet. This vehicle inspection and registration is time-consuming and expensive.

\*If the vehicle is to be used by someone other than the carnet holder, the vehicle must be notified in advance with the prescribed application form at customs clearance in Japan.

#### (2) ATA Carne

ATA Carnet is required when bringing in equipment, parts, tyres and promotional items. All items imported with ATA Carnet must be re-exported after the rally. Prohibited items cannot be imported, even temporarily.

#### (3) PRO FORMA INVOICE.

Ask the organiser or the individual transport company about the use of PRO FORMA INVOICE. The above documents are required when obtaining special authorisation for the import of dangerous goods such as high-pressure gas cylinders and medical supplies. For these imports, you will need to follow your own procedures.

### 8.2 Rules of vehicles

All vehicles competing in this rally must comply with Japanese domestic regulations such as the Road Trucking Vehicle Law and Road Traffic Law, and must also conform to the Appendix J of International Sporting Code or JAF National Competition Vehicle Regulations (light pots, exhaust volume, etc.).



## 8.2.1 Classes

### 8.2.1.1 APRC ASIA RALLY CUP / PACIFIC RALLY CUP

Vehicles complying with Article 12 of the 2024 FIA Regional Rally Sporting Regulations and Article 12 of the 2024 FIA Regional Rally Sporting Regulations V4 (APRC) (including national/regional cars permitted to participate) are eligible for entry and the vehicle class is indicated in Article 12.1 of the 2024 FIA Regional Rally Sporting Regulations.

Entrants wishing to earn points for the APRC Asia Rally Cup / Pacific Rally Cup must register with the APRC in advance via the following URL by the entry registration deadline.

<https://rally-montre.com/competitors>

Participants who wish to participate in the APRC Asia Rally Cup / Pacific Rally Cup and also wish to earn points for the 2024 JAF Japanese Rally Championship must follow the Appendix 7 of the Supplementary Regulations for the Japanese Rally Championship and other classes.

### 8.2.1.2 Japanese Rally Championship

Vehicles that conform to the 2024 JAF Japanese Rally Championship Regulations, Article 2.

### 8.2.1.3 Other Classes

In addition to vehicles complying with the 2024 JAF Japanese Rally Championship regulations, entry will be permitted in RF vehicles.

## 8.2.2 Vehicles registered overseas

For vehicles not registered in Japan, the following documents (a) and (b) are required and must be installed in the vehicle.

- (a) Carnet certification document (translated) issued by JAF and distributed by the organizer. This document has the effect of permitting the temporary importation of the vehicle. For rally cars, this is included in the entry fee, but a commission will be charged.
- (b) Liability insurance. For rally cars, this is included in the entry fee. For vehicles other than rally cars that are not registered in Japan, a fee of approximately 6,500 yen will be charged.
- (c) Rally insurance. This insurance is recommended for rally cars and recce cars. This insurance includes third party liability insurance. The premium is approximately 25,000 yen, depending on the cylinder volume.

In the entry booklet, there is a section on importation of vehicles. Please provide details about your vehicle with regard to the subscription of (b) and (c) above.

## 8.3 Conditions for driving in Japan

In order to drive in Japan, a foreign visitor must have either a Japanese driver's licence or an international licence valid for driving on public roads. International driving licences are only valid if they were issued under the Geneva Conventions of 1949 and must be clearly marked on the front cover of the licence. Please contact the organiser for more information.

Participants with licences issued in Germany, France, Switzerland, Italy, Belgium and Taiwan will need to have their licences translated by the JAF. Carrying this translation and the licence at the same time has the same effect as an international driving licence issued under the Geneva Convention.

Participants who hold licences from Geneva Convention countries and licences other than those listed above are required to switch to a foreign exemption. For more information on switching foreign exemptions, please visit this website.

<http://www.jaf.or.jp/e/switch.htm>

## 8.4 Insurance

All vehicles competing in the rally (vehicles registered overseas) must be covered by liability insurance and optional property insurance valid for rally. Overseas registered rally cars and crews will be covered by the insurance provided by the organizers under the following special conditions. (Dollar figures are based on an exchange rate of US\$1 = 150 yen)

### 8.4.1 Special Stage

Special stage spectator insurance

1. Death: up to JPY 100,000,000 (approximately USD 666,000)
2. Hospitalisation: ¥7,500 (approx. USD50)/day (up to a maximum of 180 days from the date of the accident).
3. Hospital visit: ¥5,000 (approx. USD 33)/day (up to 90 days for hospital visits within 180 days of the date of the accident).

## 8.4.2 Road Section

Road Section Third Party Personal Property Insurance

- (1) Bodily injury: unlimited maximum
- (2) Property: Up to 5,000,000 yen (approximately US\$33,000) (including special stage)
- (3) Passenger: Up to 5,000,000 yen (approx. US\$33,000)

\* Hospitalization is limited to 180 days from the date of accident.

\* Hospitalization: Up to 180 days from the date of accident, with a maximum of 90 days for outpatient visits.

The insurance provided by the organizer is valid from the start of LEG1 to the finish, or until retirement or disqualification. All service vehicles, even if they bear plates issued by the organizer, are not considered official competition vehicles for this event and are not covered by the insurance provided by the organizer.

## 8.4.3 Competition Insurance for Vehicles Registered in Japan

All vehicles registered in Japan must be covered by voluntary bodily injury insurance valid for this rally competition.

The amount of insurance coverage shall be 20 million yen or more for bodily injury, 2 million yen or more for property damage, and 10 million yen or more for passengers.

For passengers, the JMRC Mutual Aid System (compensation) is also acceptable.

\* If you do not have competition insurance, please apply for insurance valid for this rally at the Secretariat Office.

Please download the competition car insurance registration form from the "MONTRE 2024" website and apply for it.

\*Note: Please refer to the entry acceptance period in Article 4.3.

## 8.4.4 Insurance for team members other than crew members

- (1) Death: Up to 10,000,000 yen (approximately US\$66,600)
- (2) Hospitalization: 5,000 yen (about US\$33)/day

Insurance premium 550 yen (approx. 3.6 USD) per person per unit (valid for one week)

\*The maximum number of days of hospitalization and outpatient hospitalization is limited to 180 days from the date of accident, and the total number of days of inpatient and outpatient hospitalization is limited to 180 days.

## 8.5 Differences in Japanese traffic laws

Traffic rules in Japan differ from international standards. Particular attention should be paid to the following;

Overall, road signs conform to international standards, although the 'Stop' signs are inverted triangles rather than hexagons, similar to 'Give Way' signs abroad. All vehicles must always stop at level crossings and must ensure that no trains are coming before passing.

Roads not regulated by speed signs must be travelled at 40 km or less in town centres and 60 km or less in other areas.

For more information, see the [Police Agency WEB site](#).

## ◆◆◆◆ 9 Helicopters ◆◆◆◆

The area where this rally will be held is mountainous and civilian aircraft flights are severely restricted, making it very difficult to use a helicopter to support the rally. If you are still interested in using a helicopter, please contact the Secretariat by April 6.

## ◆◆◆◆ 10 Hospitality arrangements ◆◆◆◆

For more information on corporate hospitality, please contact the Secretariat.

## ◆◆◆◆ 11 Hotels/accommodation ◆◆◆◆

The entry fee does not include accommodation; please make your own arrangements.

Please see pages 29-32 of this document.

## ◆◆◆◆ 12 Reconnaissance(Recce)/GPS tracking ◆◆◆◆

### 12.1 Recce procedure

12.1.1 Recce will be held on Friday, June 7 for entered crews under the control of the organizer.

The Reception Desk will be open at the Rally HQ from 16:00 to 20:00 on Thursday, June 6 and from 5:30 to 8:00 on Friday, June 7 at the same time as the Registration/Confirmation of recce, and each crew will receive a Recce Card and Vehicle Identification Card.

12.1.2 The details of the Recce Schedule will be in accordance with Appendix 2 of the Supplementary Regulations.

### 12.2 Recce vehicles

No livery vehicles except rally cars to be used in this rally. Entrants are responsible for making their own arrangements.

### 12.3 Tyres for recce

Only standard pavement tyres may be used for recce runs. (High grip tyres cannot be used.)

In the event of tyre replacement due to a flat tyre, etc., Tyres equivalent to those listed above must be used.

### 12.4 Crew compliance requirements

12.4.1 Each crew must affix their vehicle identification card during the recce.

12.4.2 Each crew may, in principle, run each special stage twice within the designated time. However, a special stage that duplicates the same section will be considered as one stage and will be run twice at one location.

### 12.5 Traffic control

12.5.1 During the recce, competitors must obey all traffic laws and regulations, as well as any instructions of the Organizer as notified in the Supplementary Regulations or in the Bulletin. In all cases, they must respect the safety and rights of other road users. Officials may monitor the movements of recce vehicles on the route of the recce, either visually or by means of instruments or photo-video. They may also monitor using the tracking system described below.

All violations will be reported to the Stewards and penalties may be imposed up to the point of not being able to start the rally.

12.5.2 During the recce, the legal speed limit must not be exceeded during the special stages and on all roads. Violation of this rule will be penalized by the Clerk of the Course in accordance with Article 34.2 of the 2024 FIA Regional Rally Sporting Regulations.

### 12.6 GPS Tracking system

As all cars are required to have a GPS safety tracking system in accordance with Article 182 of the 2024 FIA Regional Rally Sporting Regulations, we will be using the RallyStream tracking system for this rally.

For safety reasons, all cars will be tracked under the same conditions. RallyStream devices (iPhone8), SIM cards, and charging cables (USB-A to Lightning) will be provided by the organizer and will be lent to participants at the time of recce registration.

Please return them to HQ as soon as possible after the rally.

Lending fee: 15,000 yen per set (please indicate in the entry booklet)

## ◆◆◆◆ 13 Scrutineering, sealing and marking, advertising ◆◆◆◆

### 13.1 Official Scrutineering

#### 13.1.1 Location and date of official scrutineering

Location : Official scrutineering area in the parking lot of Annaka Shinkumi Sports Center

Date and Time : June 7, 2024 (Friday) 9:00-17:00

Marking of all vehicle gearboxes and differentials and spare gearboxes and differentials, as well as turbocharger sealing for all turbocharged vehicles, will be done at the same time as the official scrutineering according to the communication scrutineering schedule to be issued on or before June 4, 2024.

#### 13.1.2 Mud Flaps

Rally vehicles may be fitted with mud flaps in accordance with the FIA International Sporting Code, Appendix J, Article 252.7.7.

#### 13.1.3 Windows/nets

The use of shatterproof film on side and rear windows is mandatory. Details will be in accordance with FIA International Sporting Code, Appendix J, Article 253.11.

#### 13.1.4 Crew Safety Equipment

Crews must wear all safety clothing and equipment including driver's clothes, gloves, shoes, helmets, balaclavas, FHR helmets, and FHRs homologated in accordance with International Sporting Code, Appendix L, Article 3. Please be sure to bring your equipment to the official scrutineering area as each crew member's equipment will be checked during the official scrutineering. Entries in JN-2 through JN-6 and other classes of the Japanese Rally Championship are also strongly recommended to wear approved undergarments, although it is not mandatory.

#### 13.1.5 Noise Levels

Vehicles temporarily imported under the FIA Carnet and Customs Tariff Law must have noise levels below the standards of the country of registration.

Vehicles registered in Japan must have noise levels that meet the safety standards of the Road Trucking Vehicle Law.

#### 13.1.6 Special domestic conditions

No radio use is allowed without government permission. If you wish to use a radio, please apply to the Secretariat by April 6.

#### 13.1.7 Safety Fuel Tank

Vehicles competing in the APRC are recommended to be equipped with an FIA-approved safety fuel tank as stipulated in Article 253.14 of Appendix J of the FIA International Sporting Code.

#### 13.1.8 Kill Switch

Vehicles competing in the ARPC must be equipped with circuit breakers that conform to the FIA International Sporting Code, Appendix J, 253.14. It is strongly recommended that cars competing in the Japanese Rally Championship and other classes also install circuit breakers.

#### 13.1.9 Fire Fighting Equipment

APRC entries must be equipped with a fire extinguishing system in accordance with Article 253.7 of the FIA International Sporting Code.

#### 13.1.10 Items to be installed on competition vehicles

Two emergency stop signs (triangular), two A3 cards with "SOS" in red on one side and "OK" in green on the other side (to be placed in an easily accessible position in the car), emergency signal equipment (smoke bombs and red lights), tow rope, first aid chemicals, and a fire extinguisher of the specifications specified in each vehicle regulation.

#### 13.1.11 Installation of a safety tracking system

Smartphones (iOS) will be used in this rally.

#### 13.1.12 Installation of On-board Camera

If an on-board camera is to be installed, an application form for the use of an on-board camera must be submitted at the time of entry registration.

The camera must be installed by the time of the official scrutineering. If a sticker is affixed by the scrutineering staffs and permission has not been granted, photography is not permitted.

The copyright of the images taken by this camera belongs to the organizer, and the organizer may be asked to submit the images to the organizer.

\*Please note that from this year, the installation of car cameras is strictly restricted for safety reasons.



## 13.2 Post-rally Scrutineering

### 13.2.1 Location and date of Post-rally scrutineering

Location :Scrutineering area in the parking lot of Annaka Shinkumi Sports Center

Date: Sunday, June 9, 2024, from 15:20 (tentative)

## 13.3 Advertisements and rally plates

### 13.3.1 Windows

Advertisements on the body of the vehicle, including the roof, are permitted. However, advertising above the front window of a vehicle is permitted only for vehicles registered outside Japan. The size of the advertisement must not exceed 10 cm in height from the top of the front window and 8 cm in height from the top edge of the rear window.

### 13.3.2 Optional Advertisements

Entrants who accept the organizer's voluntary advertising must reserve advertising space in accordance with Appendix 4 of the Supplementary Regulations.

### 13.3.3 Alcohol and tobacco advertising

In Japan, there are no restrictions on advertising on rally cars and uniforms, and the same applies to alcohol and tobacco advertising.

### 13.3.4 Rally Plates and Numbers

APRC Asia Rally Cup / Pacific Rally Cup entrants will be provided with a set of rally plates and number panels by the organizer in accordance with Article 27, 28 and 29 of the 2024 FIA Regional Rally Sporting Regulations. These must be affixed to the vehicle by the time of the official scrutineering in accordance with the Supplementary Regulations. Violation of this rule will result in a fine of 54,000 yen.

All entries in the Japanese Rally Championship and other classes will be issued with a set of numbers in accordance with JAF regulations. These must be affixed to the vehicle by the time of the official scrutineering in accordance with the Supplementary Regulations. Any violation of this will be reported to the Stewards.

## ◆◆◆◆ 14 Shakedown ◆◆◆◆

This rally will not conduct Shakedown.

## ◆◆◆◆ 15 Start ◆◆◆◆

Date and Time : June 8, 2024 (Saturday) First Car at 8:00 –

Place: Starting area in Annaka Shinkumi Sports Center

Method: The cars will start one after another at the signal of the starting flag given by the guest of honor.

The starting interval will be determined by the officials.

## ◆◆◆◆ 16 Finish ◆◆◆◆

Date and Time: June 9, 2024 (Sun.) First Car at 16:37- (tentative)

Place: Finish area in Annaka Shinkumi Sports Center

Method: A provisional award ceremony will be held at the finish podium for the top finishing teams (1st to 3rd) in each category. Crews not eligible for other awards will be directed to the Parc Fermè by the officials.

## ◆◆◆◆ 17 Promotional activities ◆◆◆◆

### 17.1 Press Conference

Date and time : Friday 7 June 2024 17:30-18:00

Location : Media Centre, Annaka Shinkumi Sports Centre

Contents : APRC and Japanese Rally Championship top crew press conference.

## 17.2 Rally Park

Date : Saturday 8 to Sunday 9 June 2024

Location : Annaka Shinkumi Sports Centre

Contents : Details will be posted on the website on an as-needed basis.

## 17.3 Ceremonial Start

See section 15 - Start

## 17.4 Ceremonial Finish

See section 16 - Finish

## 17.5 Post-rally Press Conference

Date and Time: Sunday 9 June 2024 From 16:00

Location : Media Center at Annaka Shinkumi Sports Centre

Contents : Press Conference by top finishing crews

## ◆◆◆◆ 18 Media ◆◆◆◆

Pre-registration is required to cover MONTRE 2024.

Pre-registration is required between 10 April (Wed) and 16 May (Wed) 2024, and can be made via the media page on the MONTRE website below.

MONTRE Media Office (in NPO MOSCO Takasaki Office)

2458-13, Kurgano-cho, Takasaki, Gunma 370-1201

TEL +81(0)27-386-4365 / FAX +81(0)27-386-4375

Website: <https://rally-montre.com/media/> Email: [media@rally-montre.com](mailto:media@rally-montre.com)

## ◆◆◆◆ 19 Credentials and Vehicle passes ◆◆◆◆

Details of credentials and vehicle passes are given in Rally Guide 2.

◆◆◆◆ 20 Health and Safety Services ◆◆◆◆

20.1 Emergency services

In case of emergency, contact details are as follows.

Fire and Ambulance	119
Police	110

20.2 Medical facilities

**Public Usui Hospital**

1-9-10, Haramachi, Annaka, Gunma

<https://usui-hospital.jp> TEL : +81(0)27-385-8221

\*Closed on Saturdays, Sundays and public holidays (no emergency room)

Internal medicine, surgery, neurosurgery, pediatrics, orthopedic surgery, ophthalmology, otolaryngology, urology, dermatology, dentistry and dental surgery



**Fujioka Public General Hospital**

813-1 Nakagurusu, Fujioka, Gunma TEL : +81(0)274-22-3311 <http://www.fujioka-hosp.or.jp/>

Internal medicine, Neurology, Gastroenterology, Circulatory medicine, Respiratory medicine, Hematology, Nephrology, Allergology, Rheumatology, Pediatrics, Surgery, Plastic surgery, Personal and Neurological Surgery, Gum Surgery, Formation Surgery, Dermatology, Urology, Obstetrics and Gynecology, Ophthalmology, Otorhinolaryngology, Radiology, Radiotherapy, Anesthesia, Diagnostic Pathology, Surgery, plastic surgery, neurosurgery



### Shimonita Kosei Hospital

409 Oaza Shimonita, Shimonita-cho, Amaraku County

TEL : +81(0)274-82-3555 <https://www.shimonitakosei-hosp.jp>

Internal medicine, surgery, orthopedic surgery, ophthalmology, pediatrics, urology, dermatology



### Public Tomioka General Hospital

2073-1, Tomioka, Tomioka TEL: 0274-63-2111

<http://www.tomioka-hosp.jp>

Internal Medicine, Gastroenterology, Cyclology, Orthopaedics, Urology, Paediatrics



Because the day of the rally falls on a night or Saturday holiday, it is difficult to specify the right hospital for your symptoms.

If you do not need an ambulance but would like to know which hospital is suitable for your condition, please contact Emergency telephone service

Takasaki City: +81(0)27-325-0011

Tomioka-Kanra area: +81(0)274-64-0099

Fujioka-Tano area: +81(0)274-23-6699



### Tertiary emergency ( Emergency center )

Tertiary emergency (emergency centre)As a back-up hospital for initial (primary) and secondary emergency medical facilities, it accepts critically ill patients from medical facilities and emergency transport services 24 hours a day.

Direct acceptance is not possible. (Ambulances and helicopters are used to transport patients).

If emergency treatment is required, an ambulance will be arranged from Rally HQ.

### Independent Administrative Institution National Hospital Organization

#### Takasaki General Medical Centre

36 Takamatsu-cho, Takasaki, Gunma

TEL : 027-322-5901 <https://takasaki.hosp.go.jp>

#### 周辺地図



## 20.3 Towing services

Organisers will provide a tow truck at each stage, and in the event of a problem within the SS, the tow truck provided by the organisers will transport the vehicle to the outside of the SS course (actual costs will apply). If you require transport other than the above, please contact Rally HQ.

## ◆◆◆◆ 21 General information ◆◆◆◆

### 21.1 Annaka City area

#### 21.1.1 Annaka City General Information

Annaka City Tourism Section, Department for the Creation of Moriori  
 245 Shinbori, Matsuida-cho, Annaka, Gunma 379-0292  
 TEL: +81(0)27-382-1111 FAX: +81(0)27-386-4111  
<https://www.city.annaka.lg.jp/page/2054.html>

#### 21.1.2 Accommodation guide

See accommodation information page below.  
<https://www.city.annaka.lg.jp/page/2082.html>

### 21.2 Takasaki City area

#### 21.2.1 General information

Takasaki Tourist Association  
 2F Takasaki Monterey, 222 Yashima-cho, Takasaki, Gunma 370-0849  
 Tel: +81(0)27-330-5333 fax: +81(0)27-330-5334  
<http://www.takasaki-kankoukyoukai.or.jp/> Mail: [info@takakan.org](mailto:info@takakan.org)

### 21.2.2 Accommodation Information

Takasaki City Tourism Section Takasaki Outing Navi

[https://www.city.takasaki.gunma.jp/docs/2023032400066/files/odekake\\_hyoushi.pdf](https://www.city.takasaki.gunma.jp/docs/2023032400066/files/odekake_hyoushi.pdf)

## 21.3 Fujioka City area

### 21.3.1 Fujioka City Tourism Association

Fujioka Tourist Association Secretariat (Fujioka City Commerce, Industry and Tourism Division)

327 Nakagurusu, Fujioka-city, Gunma 375-0015

Tel: +81(0)274-40-2317 Fax: +81(0)274-24-4414

<https://www.fujioka-kanko.net/> Mail: [syoko@city.fujioka.gunma.jp](mailto:syoko@city.fujioka.gunma.jp)

### 21.3.2 Fujioka Tourist Information Centre

1131-8 Naka, Fujioka-shi, Gunma 375-0005 (Inside Roadside Station Raran Fujioka Sightseeing Products Centre)

Tel:+81( )0274-50-9933 FAX: +81(0)274-50-9934 Mail: [fuji-kanko@blue.ocn.ne.jp](mailto:fuji-kanko@blue.ocn.ne.jp)

## 21.4 Tomioka City area

### 21.4.1 General information

Tomioka Tourist Association

1151-1 Tomioka, Tomioka-city, Gunma 370-2316 Machinaka Kanko Bussan Kan "Otomi-chan-chi".

Tel: +81(0)274-62-6001 Fax: +81(0)274-67-7775

<https://www.tomioka-silk.jp/>

### 21.4.2 Accommodation information

Please refer to the accommodation information page below.

<https://www.tomioka-silk.jp/stay/>

## 21.5 Shimonita Town area

### 21.5.1 General information

Shimonita Tourist Association

3766-11, Oaza, Umayama, Shimonita-cho, Amaraku-gun, Gunma 370-2603

TEL: +81(0)274-67-7500 <http://kanko.shimonita.jp/>

### 21.5.2 Accommodation information

Please refer to the accommodation information page below.

<https://www.town.shimonita.lg.jp/kanko/m03/m04/01.html>

## 21.6 Kanna Town area

### 21.6.1 General information

Kanna-town Tourist Association

40 Manba, Kanna-town, Tano-gun, Gunma 370-1504 (in Koikoi Kaikan)

TEL: +81(0)274-57-3305 <http://town.kanna.gunma.jp/kanko/>

### 21.6.2 Accommodation information

Please refer to the accommodation information page below.

<https://kannamachi-nohaku.com/stay/>

## 21.7 Ueno Village area

### 21.7.1 General information

Ueno Village Industrial Information Centre  
 310-1, Narahara, Ueno-mura, Tano gun, Gunma 370-1617  
 TEL +81(0)274-20-7070 FAX+81(0)274-59-2520  
<http://www.uenomura.jp/index.html#tourism>

### 21.7.2 Accommodation information

Please refer to the accommodation information page below.  
<http://www.uenomura.jp/stay/index.html>

## 21.8 Nanmoku Village area

### 21.8.1 General information

Nanmoku Village Promotion and Development Department  
 Tel+81(0)274-87-2011 Fax +81(0)274-87-3628  
[http://www.nanmoku.ne.jp/modules/kanko/index.php?content\\_id=1](http://www.nanmoku.ne.jp/modules/kanko/index.php?content_id=1)

### 21.8.2 Accommodation information

Please refer to the accommodation information page below.  
[http://www.nanmoku.ne.jp/modules/kanko/index.php?content\\_id=7](http://www.nanmoku.ne.jp/modules/kanko/index.php?content_id=7)

## ◆◆◆◆ 22 Others ◆◆◆◆

### 22.1 Special stages

Stage No.	Stage Name	Distance
SS 1 / 5	Youkura Touge	14.99 km
SS 2 / 6	Ghost Tunnel Part2	10.06 km
SS 3 / 4	Old Usui Touge	9.58 km
SS 7 / 10	Grandma.Kimura Short	14.32 km
SS 8 / 9	Myougi	5.78 km

### 22.2 Inquiries from sponsors and stalls in the Rally Park

Sponsors and those wishing to set up stalls in the Rally Park should contact the following.  
 For further information, please check the Rally Guide 2 and the official website.  
 Cinq INC.  
 5-5-21-202, Futago, Takatsu-ku, Kawasaki, Kanagawa 213-0002, Japan  
 Tel: +81(0)44-850-5115 / Fax: +81(0)44-850-5116  
 Email: [info@cinq-5.co.jp](mailto:info@cinq-5.co.jp)

### 22.3 Information of the other class

MONTRE 2024 also plans to include classes not covered by the championship at the same time.  
 Details are given in the draft Supplementary Regulations and Rally Guide 2.

## ◆◆◆◆ 23 Itinerary ◆◆◆◆

Itinerary  
2024 FIA APRC ASIA RALLY CUP  
2024 JAF JAPANESE RALLY CHAMPIONSHIP

Version1.3 - 27 February 2024

Start (Section 1 / 2)		Saturday, 8 June 2024			(Sunrise 4:26, Sunset 19:02)	
TC	LOCATION	SS dist.	Liaison dist.	Total dist.	Target time	First car due
Ceremonial Start - Annaka Shinkumi Sports Center						
0	Rally Start (Annaka Shinkumi Sports Center)					8:00
<b>RZ</b>	Refuel - Gas Station (ENEOS Wing AnnakaKudari SS)		[10.20]		(0:15)	(8:15)
1	Distance to next refuel	(25.05)	(66.02)	(91.07)		
1	Aokura		38.86	38.86	1:00	9:00
SS1	<i>YoukuraTouge 1</i>	14.99				9:03
2	Sumaizuku		17.53	32.52	0:45	9:48
SS2	<i>Ghost Tunnel Part2 1</i>	10.06				9:51
<b>RZ</b>	Refuel - Gas Station (Cosmo Oil New Nanjai SS)		[19.83]		(0:34)	(10:25)
2	Distance to next refuel	(9.58)	(72.28)	(81.86)		
3	Prefectural Border		61.15	71.21	1:20	11:11
SS3	<i>Old Usui Touge 1</i>	9.58				11:14
3A	Parc Fermé IN		20.76	30.34	0:45	11:59
3B	Parc Fermé OUT / Flexi Service IN				(0:10)	
	<b>(Flexi) Service A (Annaka Shinkumi Sports Center)</b>	<b>(34.63)</b>	<b>(138.30)</b>	<b>(172.93)</b>	<b>0:20</b>	
3C	Flexi Service OUT / Regroup IN					
3D	Regroup OUT					12:59
<b>RZ</b>	Refuel - Gas Station (ENEOS Wing AnnakaKudari SS)		[10.20]		(0:16)	(13:15)
3	Distance to next refuel	(9.58)	(53.75)	(63.33)		
4	Prefectural Border		40.80	40.80	1:05	14:04
SS4	<i>Old Usui Touge 2</i>	9.58				14:07
<b>RZ</b>	Refuel - Gas Station (Cosmo Oil New Nanjai SS)		[23.15]		(0:49)	(14:56)
4	Distance to next refuel	(25.05)	(69.97)	(95.02)		
5	Aokura		40.63	50.21	1:15	15:22
SS5	<i>YoukuraTouge 2</i>	14.99				15:25
6	Sumaizuku		17.53	32.52	0:45	16:10
SS6	<i>Ghost Tunnel Part2 2</i>	10.06				16:13
<b>RZ</b>	Refuel - Gas Station (ENEOS Wing AnnakaKudari SS)		[34.96]		(1:04)	(17:17)
5	Distance to next refuel	(0.00)	(10.36)	(10.36)		
6A	Parc Fermé & Technical Zone IN		45.32	55.38	1:20	17:33
6B	Parc Fermé OUT - Flexi Service IN				(0:10)	
	<b>Flexi Service B (Annaka Shinkumi Sports Center)</b>	<b>(34.63)</b>	<b>(144.28)</b>	<b>(178.91)</b>	<b>0:45</b>	
6C*	Flexi Service OUT / Over Night Parc Fermé IN					
All cars (except restarting cars) must be returned to Parc Fermé no later than						20:30
<b>Saturday totals</b>		<b>69.26</b>	<b>282.58</b>	<b>351.84</b>		

Section 1

Section 2

\* Early check-in permitted  
NOTE: SS2~TC3 use expressway (pay)



Itinerary  
2024 FIA APRC ASIA RALLY CUP / PACIFIC RALLY CUP  
2024 JAF JAPANESE RALLY CHAMPIONSHIP

Version1.3 - 27 February 2024

Re-Start (Sections 3 / 4)		Sunday 9 June 2024			(Sunrise 4:26, Sunset 19:02)			
TC	LOCATION	SS dist.	Liaison dist.	Total dist.	Target time	First car due		
6D	Parc Fermé OUT / Service IN					6:30		
Service C (Annaka Shinkumi Sports Center)					0:15			
6E	Service OUT					6:45		
<b>RZ</b>	Refuel - Gas Station (ENEOS Dr.Drive Self Tomioka IC)		[12.24]		(0:18)	(7:03)		
<b>6</b>	Distance to next refuel	(14.32)	(78.78)	(93.10)				
7	Kamihino		37.05	37.05	0:55	7:40		
<b>SS7</b>	<i>Grandma.Kimura Short 1</i>	14.32				7:43		
<b>RZ</b>	Refuel - Gas Station (Cosmo Oil New Nanjai SS)		[41.73]		(1:17)	(9:00)		
<b>7</b>	Distance to next refuel	(5.78)	(35.84)	(41.62)				
8	Kamiosaka		60.63	74.95	1:40	9:23		
<b>SS8</b>	<i>Myougi 1</i>	5.78				9:26		
<b>RZ</b>	Refuel - Gas Station (ENEOS Wing AnnakaKudari SS)		[16.94]		(0:33)	(9:59)		
<b>8</b>	Distance to next refuel	(5.78)	(61.72)	(67.50)				
8A	Parc Fermé IN		27.36	33.14	0:50	10:16		
8B	Parc Fermé OUT / Flexi Service IN				(0:10)			
Flexi Service D (Annaka Shinkumi Sports Center)					(20.10)	(125.04)	(145.14)	0:20
8C	Flexi Service OUT / Regroup IN							
8D	Regroup OUT					11:16		
9	Kamiosaka		25.82	25.82	0:40	11:56		
<b>SS9</b>	<i>Myougi 2</i>	5.78				11:59		
<b>RZ</b>	Refuel - Gas Station (ENEOS Dr.Drive Self Tomioka IC)		[25.48]		(0:43)	(12:42)		
<b>9</b>	Distance to next refuel	(14.32)	(71.06)	(85.38)				
10	Kamihino		50.29	56.07	1:20	13:19		
<b>SS10</b>	<i>Grandma.Kimura Short 2</i>	14.32				13:22		
10A	Technical Zone IN		46.25	60.57	1:30	14:52		
10B	Technical Zone OUT				0:10	15:02		
Service E (Annaka Shinkumi Sports Center)					(20.10)	(122.36)	(142.46)	0:10
10C*	Service OUT - Finish Holding Area IN					15:12		
Podium Finish - Holding IN						(0:05)	(15:17)	
Final Parc Fermé IN								
<b>Sunday totals</b>		40.20	247.40	287.60				

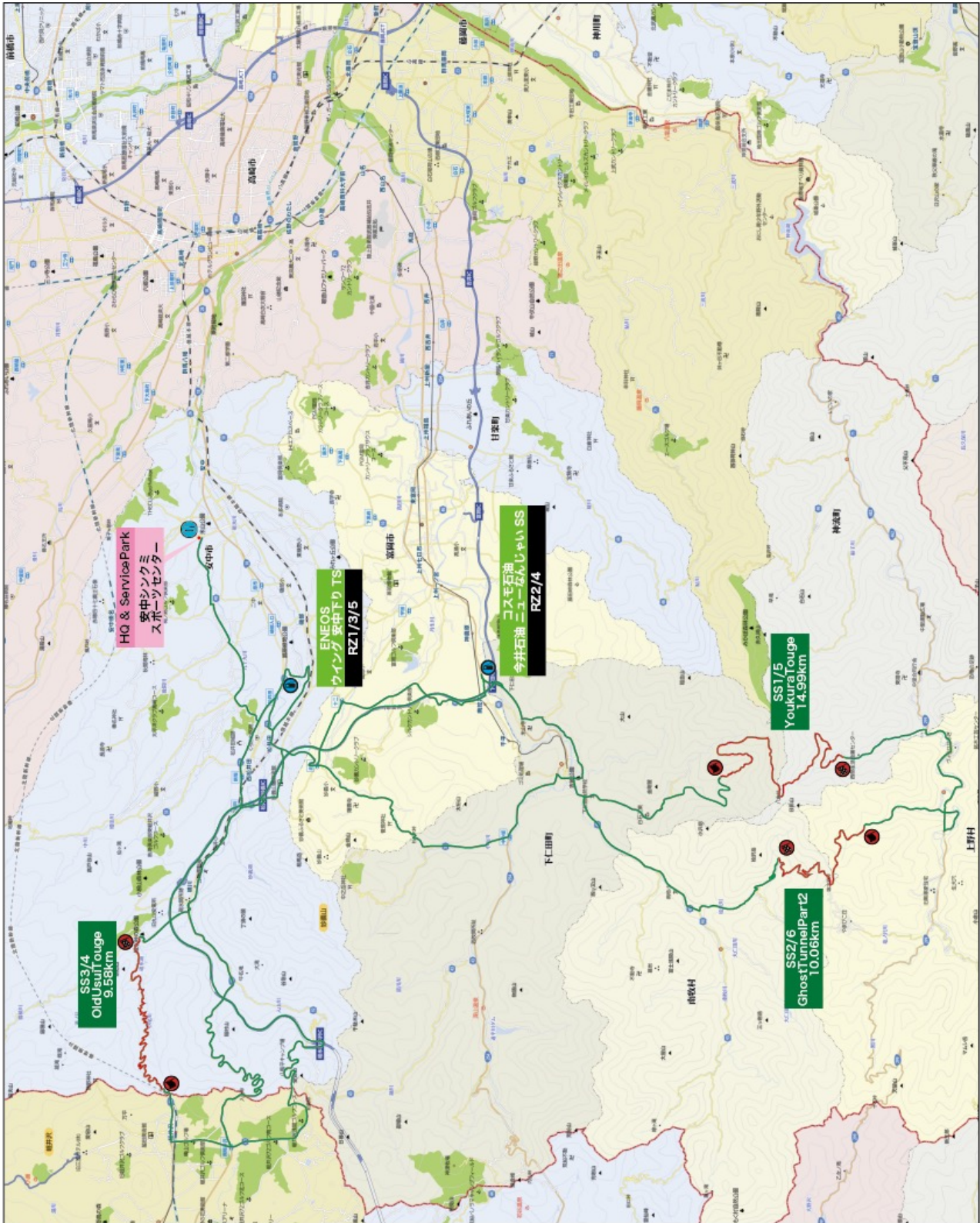
\* Early check-in permitted

NOTE: SS7~TC8 / SS9~TC10 use expressway (pay)

Totals of the Rally		SS	Liaison	Total	%
Saturday	6SS	69.26	282.58	351.84	19.7
Sunday	4SS	40.20	247.40	287.60	14.0
<b>Total</b>	<b>10SS</b>	<b>109.46</b>	<b>529.98</b>	<b>639.44</b>	<b>17.1</b>

Note: Tyre Warming Zones are not included in the distances

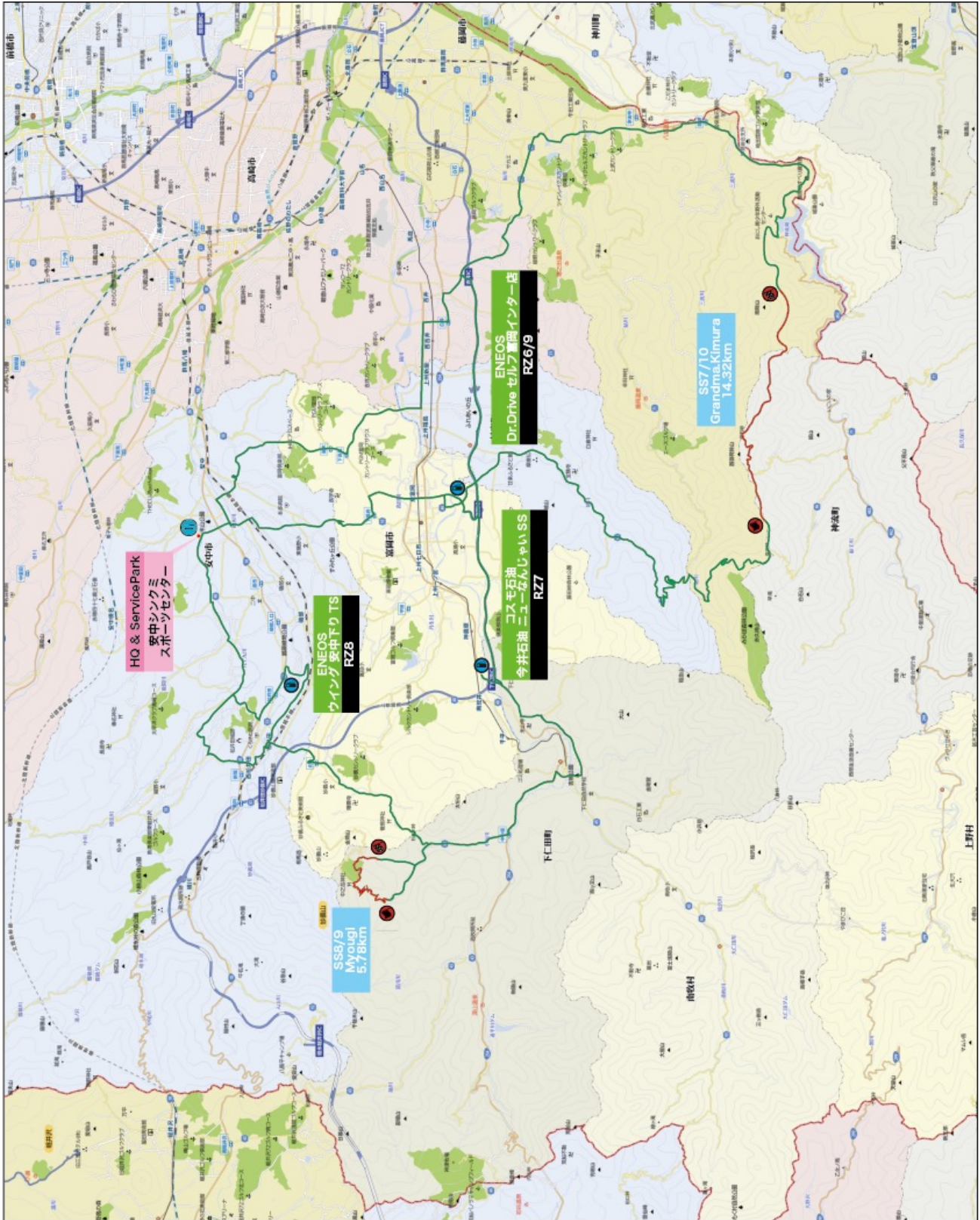
◆◆◆◆ 24 Course Map ◆◆◆◆



MONTRE 2024  
REG1  
6月8日(土)  
コース案  
ver 1.0

SS	—	Start	Finish
liaison	—	Service Park	指定給油所





MONTRE 2024  
REG2  
6月9日(日)  
コース案  
ver 1.0

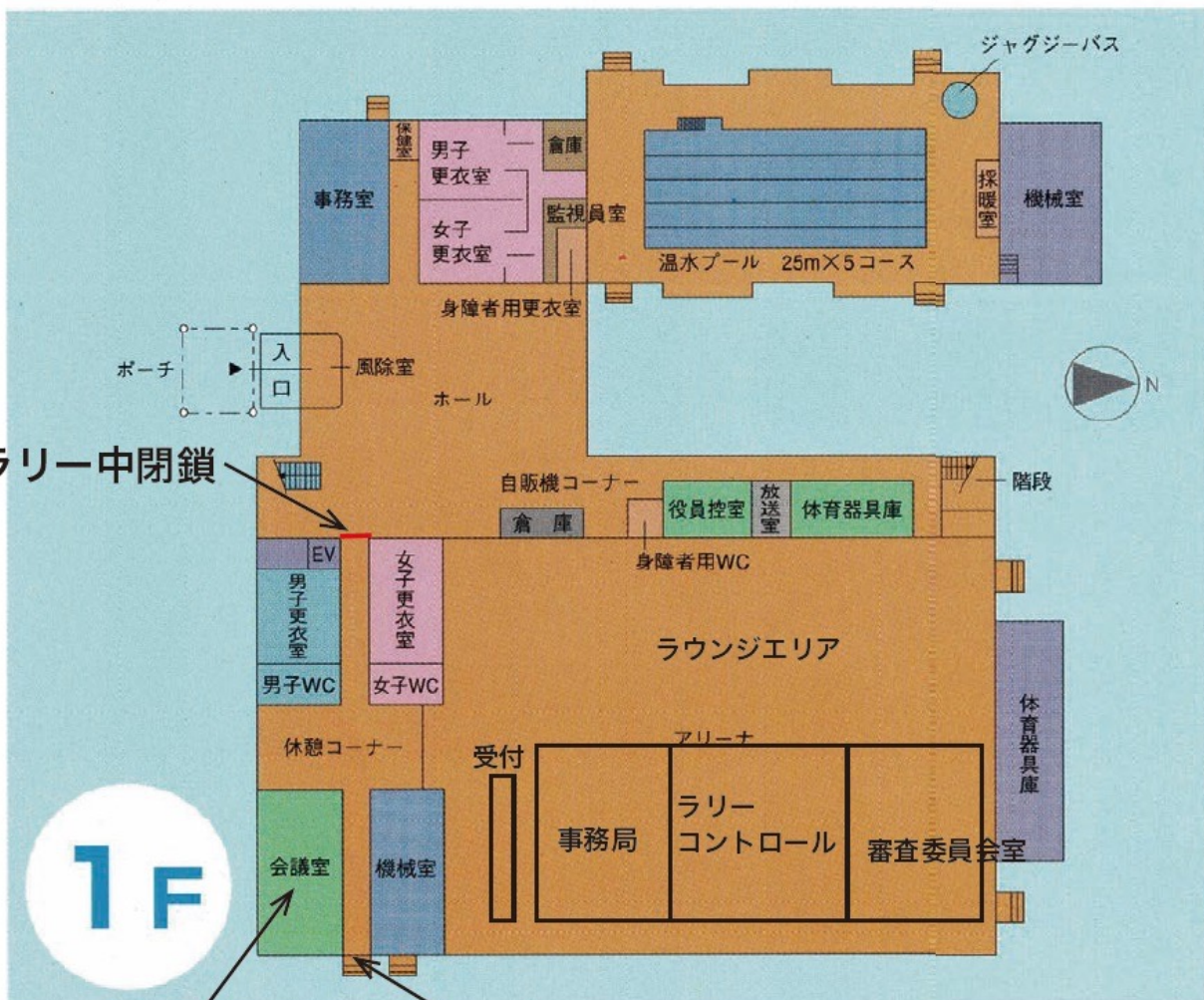
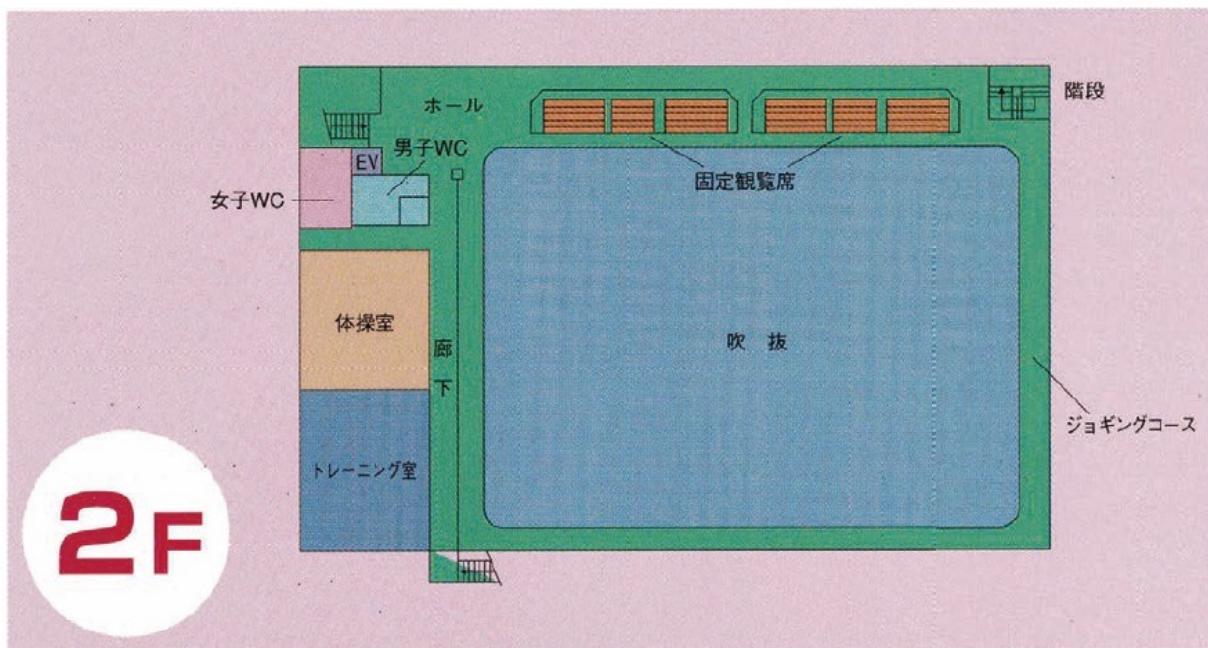
SS		Start		Finish	
liaison		Service Park		指定給油所	



◆◆◆ 25 Rally HQ / Service Park Layout ◆◆◆







メディアセンター

ラリー関係者出入口

**M O S C O**  
**MOTOR SPORTS COORDINATE**