



FIA CEZ Cross-Country Rally Championship
MNASZ M1Flotta Hungarian Cross-Country Rally Championship
PZM Cross-Country Rally Championship
MAMS International Open Baja Cup, with International Participants

Pápoc / HUN
09-11.05.2024.



Dátum/Date:	2024.05.08.	Idő/Time:	10:00
Cím/Subject:	1. sz. Végrehajtási utasítás / Bulletin Nr.1	Száma/Doc No.:	1
Kitől/From:	Rendező / Organizer	Oldal/Page:	14
Kinek/To:	Minden Autós versenyzőnek / All CAR Competitors	Melléklet/Attachement:	3

2.5 Felügyelő Testület / Stewards of the Meeting:

Tag / Steward:

Maciej Konarzewski (PL)

2.7 Tisztségviselők / Officials:

Biztonsági Vezető / Chief Safety Officer:

Balogh László

Vezető Technikai ellenőr / Chief Scrutineer:

Feind Gábor

PZM Megfigyelő / PZM Observer:

Marek Kisiel

PZM technikai delegált / PZM technical delegate:

Wojciech Nowak

PZM technikai delegál asszisztens / PZM technical delegate assistant:

Wojciech Percik

Versenyorvos / CMO:

2024.05.10. (Pápoc)

Bertók Csaba

2023.05.11. (Pápoc)

Németh László

2023.05.11. (Kemenesmagasi)

Géczi Attila

GPS értékelés / GPS evaluation:

M-Info, GEOTRAQ

3. Program:

Prológ Start / Prologue Start	Pápoc	2024.05.10	14:15
Szerviz / Service	Idősek Klubja, Pápoc, Vásár út 37.		14:30
Rajthelyválasztás / Choosing of Starting Position	Idősek Klubja, Pápoc, Vásár út 37.		15:10
Gyűjtő / Regrouping	Művelődési Ház, Pápoc, Rába utca 8.		15:42
SS1 Start			16:20
Szerviz / Service	Idősek Klubja, Pápoc, Vásár út 37.		16:50
SS2 Start			18:10
Szerviz / Service	Idősek Klubja, Vásár út 37.		18:40
1.Napi szakasz cél / Leg 1 Finish - Parc-Fermé	Művelődési Ház, Pápoc, Rába utca 8.		19:42
2.Napi Rajtlista kifüggesztése / Publication of start list Leg2	Sportity		21:00
2. Napi szakasz rajtja / Leg 2 Start	Művelődési Ház, Pápoc, Rába utca 8.	2024.05.11	10:00
SS3 Start	Pápoc, Lánka Patak		10:10
Szerviz / Service	Idősek Klubja, Pápoc, Vásár út 37.		11:00
SS4 Start	Pápoc, Lánka Patak		12:00
Szerviz / Service	Idősek Klubja, Pápoc, Vásár út 37.		12:45
Gyűjtő / Regrouping	Művelődési Ház, Pápoc, Rába utca 8.		13:45
SS5 Start	Pápoc, Lánka Patak		14:25
Szerviz / Service	Idősek Klubja, Pápoc, Vásár út 37.		15:11
SS6 Start	Pápoc, Lánka Patak		16:21
Verseny Célja / Race Finish - Parc-Fermé	Művelődési Ház, Pápoc, Rába utca 8.		17:12
Publication of Provisional Classification	Sportity	19:00*	

*After the Stewards have declared the Classification final.



FIA CEZ Cross-Country Rally Championship
MNASZ M1Flotta Hungarian Cross-Country Rally Championship
PZM Cross-Country Rally Championship
MAMS International Open Baja Cup, with International Participants

Pápoc / HUN
09-11.05.2024.



4.4.2 Helyszínen fizetendő / To be paid onsite

Vis major okok miatt a GPS szolgáltató Geotraque változott, a szolgáltató váltás miatt a kaució összeges is változott. / Due to a force majeure issue the GPS provider changed to GEOTRAQ, the new provider has a different deposit policy.

GPS + Előzést segítő rendszer kaució / GPS + Overtake system deposit: 80.000, - Ft / 200 €

A telepítési útmutatót csatoltuk jelen dokumentumhoz. / Installation manual attached to this document.

14.2 Óvás díja / Protest deposit

Általános / General: 300 000 Ft / 770 €

Technikai / Technical: 300 000 Ft / 770 €



FIA CEZ Cross-Country Rally Championship
MNASZ M1Flotta Hungarian Cross-Country Rally Championship
PZM Cross-Country Rally Championship
MAMS International Open Baja Cup, with International Participants



Pápoc / HUN
09-11.05.2024.

1. Melléklet / Appendix 1: RENDEZŐ EGYÉB KÖZLENDŐI / ITEMS AT THE ORGANISERS' DISCRETION

A Riverside Baja szervizparkjába és a rendezvény területére a csapatoknak kizárólag a **Regisztrációs Pont** érintésével és az ott felvett **belépési engedélyek, megfelelő mennyiségű szervizmatricák és a Check Lista** átvétele után engedélyezett.

A Regisztrációs Pont helyszíne: Pápoc, idősek klubja (HQ) előtti Y elág
<https://maps.app.goo.gl/7WnD5jshs7sVpaQs7>

A Regisztrációs Pont nyitvatartási ideje: 05.09. Csütörtök: 10:00-21:00
05.10. Péntek: 6:00-12:00

A Szervizmatrica felragasztása az első szélvédő belső felületére **KÖTELEZŐ!**
A Check Listára dokumentált mennyiségű Szervizmatricát az Adminisztratív átvételen ki kell fizetni és a Check Listát az átvételeken és a Parc Fermé beállásakor is át kell adni a rendezvény személyzetének.
A Szervizparkban a helyek nincsenek kijelölve, de kérünk mindenkit, hogy a megrendelt méretű helyet foglalják csak és vegyék figyelembe versenytársaik igényeit, kéréseit is!

Az alábbi térkép mutatja a Regisztráció helyét (zöld ház ikon) és a szervizpark határait:

Teams will be allowed to enter the Riverside Baja Service and the event area only after passing through the **Registration Point** and picking up their **entry permits, a sufficient amount of service stickers and the Check List**.

Registration point location: Pápoc, Y junction in front of the Senior's Club (HQ)
<https://maps.app.goo.gl/7WnD5jshs7sVpaQs7>

Opening hours of the Registration Point: 05.09. Thursday: 10:00-21:00
05.10. Friday: 6:00-12:00

It is **MANDATORY** to stick the Service Sticker on the inside of the front windscreen!
The amount of Service Stickers documented on the Check List must be paid at the Administrative Checks and the Check List must be handed over to the event staff at the scrutineering and at the Parc Fermé entrance.
There are no assigned spaces in the Service Area, but we kindly ask everyone to reserve only the size of space ordered and to take into account the needs and requests of their fellow competitors!

The map below shows the Registration point (green house icon) and the boundaries of the Service Area:





FIA CEZ Cross-Country Rally Championship
 MNASZ M1Flotta Hungarian Cross-Country Rally Championship
 PZM Cross-Country Rally Championship
 MAMS International Open Baja Cup, with International Participants

Pápoc / HUN
 09-11.05.2024.



5. Melléklet / Appendix 5: IDŐTERV / ITINERARY



RIVERSIDE BAJA 2024

CAR



Stage 1							2024.05.10. PÉNTEK / FRIDAY	
Sunrise	5:21						20:15	Sunset
IE/TC	Location	SS Maximum Time	SS Km	Liasion Km	Total Km	Target Time	1st vehicle Due	
SS								
TC0A	Parc Fermé OUT, Podium/Rajtcseremónia						14:00	
TC0B	Pápoc			4,21	4,21	0:10	14:10	
DSS P	START - PROLÓG					0:05	14:15	
ASS P	FINISH - PROLÓG	0:30	20,03		24,24	(0:17)	(14:32)	
	Pápoc						(Expected time of arrival)	
SERVICE / SZERVIZ A (70')		Rajthelyválasztás						
TC0C	Gyűjtőállomás BE / Regrouping IN			2,24	26,48	1:10	15:42	
	Gyűjtőállomás / Regrouping							
TC0D	Gyűjtőállomás KI / Regrouping OUT						16:10	
TC1	Pápoc			1,28	27,76	0:05	16:15	
DSS 1	START - PÁPOC / 1					0:05	16:20	
ASS 1	FINISH - PÁPOC	0:45	37,88		65,64	(0:32)	(16:52)	
	Pápoc						(Expected time of arrival)	
SERVICE / SZERVIZ B (60')								
TC1A	Szerviz KI / Service OUT			0,23	65,87	1:00	17:52	
TC1B	Gyűjtőállomás BE / Regrouping IN			0,48	66,35	0:05	17:57	
	Gyűjtőállomás / Regrouping							
TC1C	Gyűjtőállomás KI / Regrouping OUT						18:00	
TC2	Pápoc			1,28	67,63	0:05	18:05	
DSS 2	START - PÁPOC / 2					0:05	18:10	
ASS 2	FINISH - PÁPOC	0:45	37,88		105,51	(0:32)	(18:42)	
	Pápoc						(Expected time of arrival)	
SERVICE / SZERVIZ C (60')								
TC2A	Parc-Ferme BE / Parc-Ferme IN			0,72	106,23	1:00	19:42	
Day Total			95,79	10,44	106,23			
			90,17%	9,83%	100%			
			SS km	Liasion km	Total km			



FIA CEZ Cross-Country Rally Championship
 MNASZ M1Flotta Hungarian Cross-Country Rally Championship
 PZM Cross-Country Rally Championship
 MAMS International Open Baja Cup, with International Participants

Pápc / HUN
 09-11.05.2024.



RIVERSIDE BAJA 2024

CAR



Stage 2		2024.05.11. SZOMBAT / SATURDAY						
Sunrise	5:19						20:16	Sunset
IE/TC	Location	SS	SS	Liasion	Total	Target	1st vehicle	
SS		Maximum Time	Km	Km	Km	Time	Due	
TC2B	Parc Fermé OUT,						10:00	
TC3	Pápc			1,28	1,28	0:05	10:05	
DSS 3	START - PÁPC / 3					0:05	10:10	
ASS 3	FINISH - PÁPC	1:00	53,30		54,58	(0:45)	(10:55)	
	Pápc						(Expected time of arrival)	
SERVICE / SZERVIZ D (55')								
TC3A	Szerviz KI / Service OUT			1,75	56,33	0:55	11:50	
TC4	Pápc			1,45	57,78	0:05	11:55	
DSS 4	START - PÁPC / 4					0:05	12:00	
ASS 4	FINISH - PÁPC	1:00	53,30		111,08	(0:45)	(12:45)	
	Pápc						(Expected time of arrival)	
SERVICE / SZERVIZ E (55')								
TC4A	Szerviz KI / Service OUT			1,75	112,83	0:55	13:40	
TC4B	Gyűjtőállomás BE / Regrouping IN			0,48	113,31	0:05	13:45	
Gyűjtőállomás / Regrouping								
TC4C	Gyűjtőállomás KI / Regrouping OUT						14:15	
TC5	Pápc			1,28	114,59	0:05	14:20	
DSS 5	START - PÁPC / 5					0:05	14:25	
ASS 5	FINISH - PÁPC	1:00	53,83		168,42	(0:46)	(15:11)	
	Pápc						(Expected time of arrival)	
SERVICE / SZERVIZ F (60')								
TC5A	Szerviz KI / Service OUT			0,23	168,65	1:00	16:11	
TC6	Pápc			1,45	170,10	0:05	16:16	
DSS 6	START - PÁPC / 6					0:05	16:21	
ASS 6	FINISH - PÁPC	1:00	53,83		223,93	(0:46)	(17:07)	
	Pápc						(Expected time of arrival)	
TC6A	Pápc			0,72	224,65	0:05	17:12	
Day Total			214,26	10,39	224,65			
			95,38%	4,62%	100%			
			SS km	Liasion km	Total km			

Section 4

Section 5

6. Melléklet / Appendix 6: GPS telepítési útmutató / GPS Installation Manual



RALLY SAFETY SYSTEM

QUICK SELF - INSTALLATION MANUAL (CAR / SSV / TRUCK)

**FOLLOW THE INFORMATION BELOW ON HOW
TO INSTALL THE SYSTEM BEFORE GOING TO SCRUTINEERING**

Version released on 12.03.2024

STEP 1 – GET FAMILIAR WITH THE SYSTEM COMPONENTS

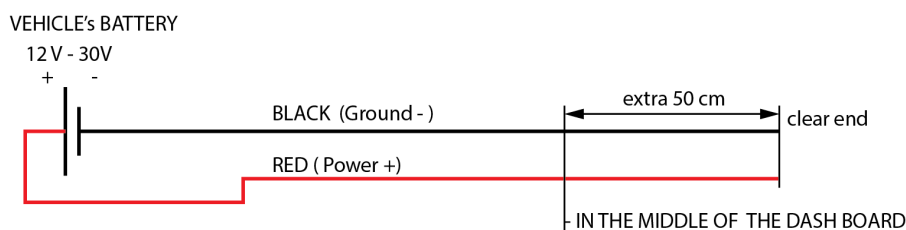


NOTE: If needed we can provide an additional extension cable to place the radio antenna on a better position.

- **IMPORTANT! NO CUTTING OF CABLES, MODIFICATION OF CONNECTORS OR OTHER INTERFERENCE IN THE SYSTEM COMPONENTS IS ALLOWED! ANY DAMAGE TO THE EQUIPMENT MUST BE PAID ACCORDING TO THE GEOTRAQ PARTS LIST!**

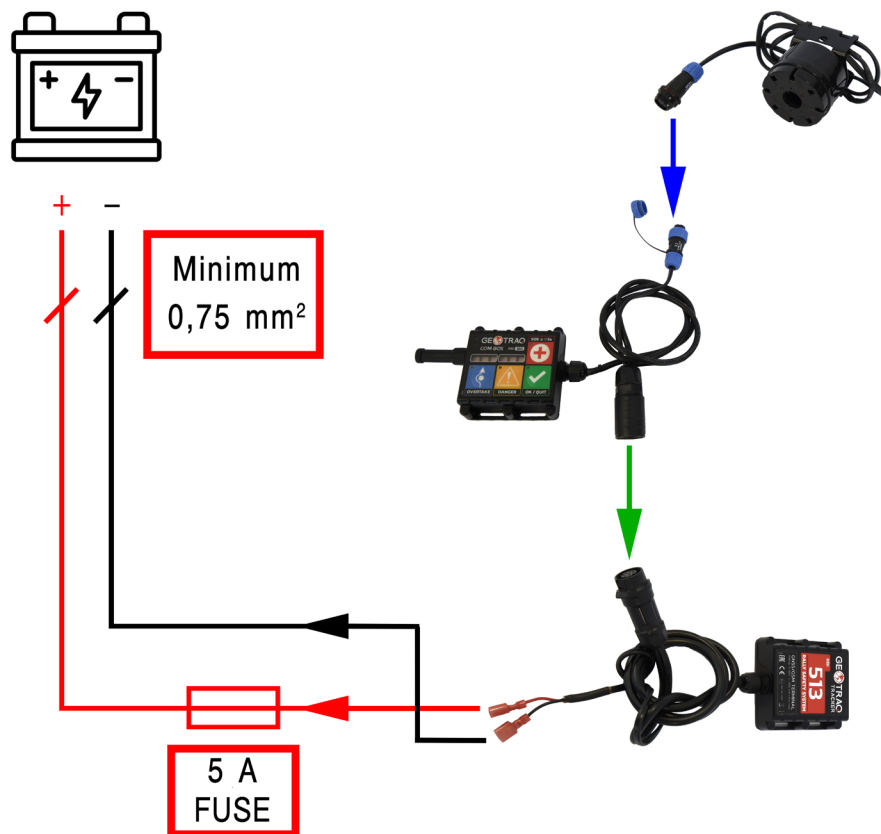
STEP 2 – PREPARE POSITIVE AND NEGATIVE CABLE FROM THE BATTERY TO THE DASH BOARD AND INSTALL INSULATED TERMINAL CONNECTORS (ONLY THOSE SUPPLIED BY THE ORGANISATION)

- **IMPORTANT! THE BATTERY MASTER CUT-OFF (KILL) SWITCH MUST NOT DISCONNECT THE POWER SUPPLY FOR THE RALLY SAFETY SYSTEM.**
- It is the responsibility of the competitors alone to provide, **DIRECT POWER SUPPLY** from the vehicle's battery according to the drawings provided.
- The power cables **MUST** be "flexible" (multi wire), insulated cables – 2 x **min 0.75** to 1.25 mm² (**WITH RED** for positive (+) wire and **BLACK** for negative (-) wire insulation color).
- The connection **MUST** have an **IN-LINE FUSE** - "BLADE TYPE" of 5A.



FEMALE INSULATED
TERMINAL CONNECTORS

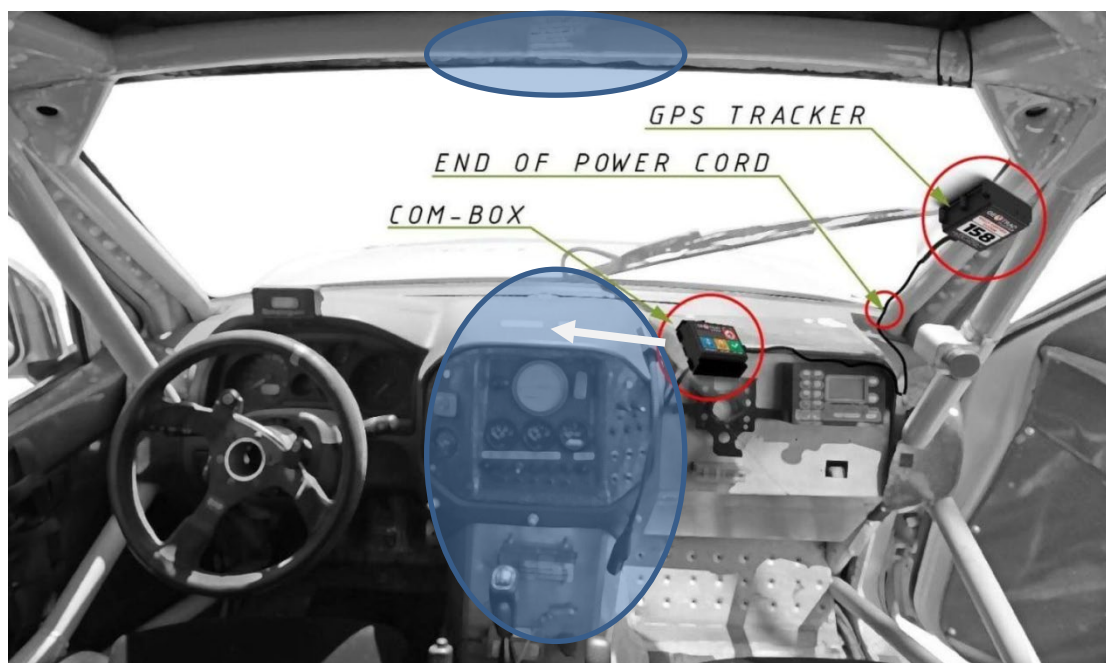
STEP 3 – MOUNTING THE SYSTEM - OVERVIEW



Overview of the system connections.

- You will receive two 6,3 mm female quick plug terminals for the power connection. **If you have old terminals, discard them and use the provided new ones!**

- **IMPORTANT! USE ONLY THE PROVIDED QUICK PLUG TERMINALS! DO NOT USE YOUR OWN!**
- **IMPORTANT! USE PROPER TOOLS TO CRIMP THEM!**



Following a change in the regulations, the 'Com-box' must be mounted in a central location as per indicated areas in blue, to enable both driver & co-driver to be able to reach the SOS button from their seat with seatbelts on. Shown are the mounting positions of the system components.

STEP 4 – MOUNT THE GPS TRACKER ON THE PROPER POSITION

- The best position is the “A-pillar” of the roll cage, or the horizontal member of the roll cage, with the tracker facing upwards.

- **IMPORTANT! THE GPS TRACKER MUST HAVE VISIBILITY TO THE SKY (NO METAL ON TOP OF THE DEVICE)**
- **IMPORTANT! INSTALLATION IS DONE WITH CABLE TIES THROUGH THE HOLES OF THE BASE OF THE DEVICE**
- **IMPORTANT! POSITION THE DEVICE IN SUCH A WAY THAT NO DIRECT DAMAGE CAN BE DONE!**



Installation of the GPS TRACKER on the roll cage “A-pillar” of a Car using cable ties.

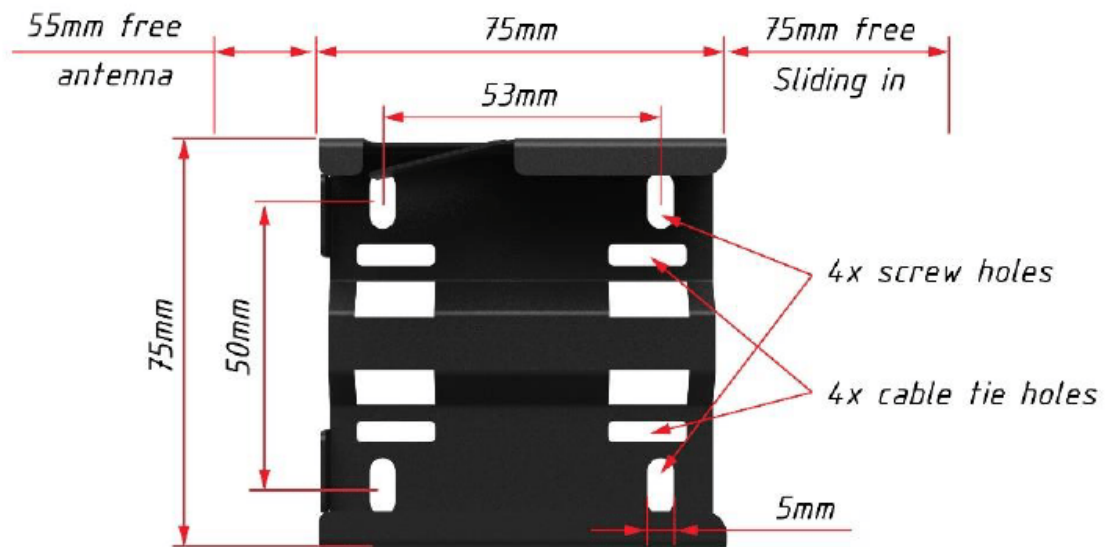
STEP 5 – MOUNT THE COM-BOX MOUNTING BRACKET AND INSERT THE COM-BOX UNIT ON THE PROPER POSITION

- You can bolt the mounting bracket as shown in the graphics below, or you can use industrial grade velcro or double-sided tape to stick it to a good surface or use cable ties to fix it to a central location on the dashboard or to the overhead tube of the roll cage above the centre of the dashboard.
- If needed, additional opening can be drilled to fix it on the required position.

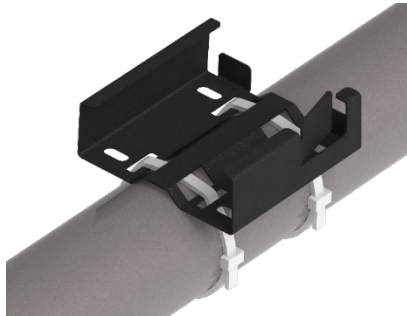
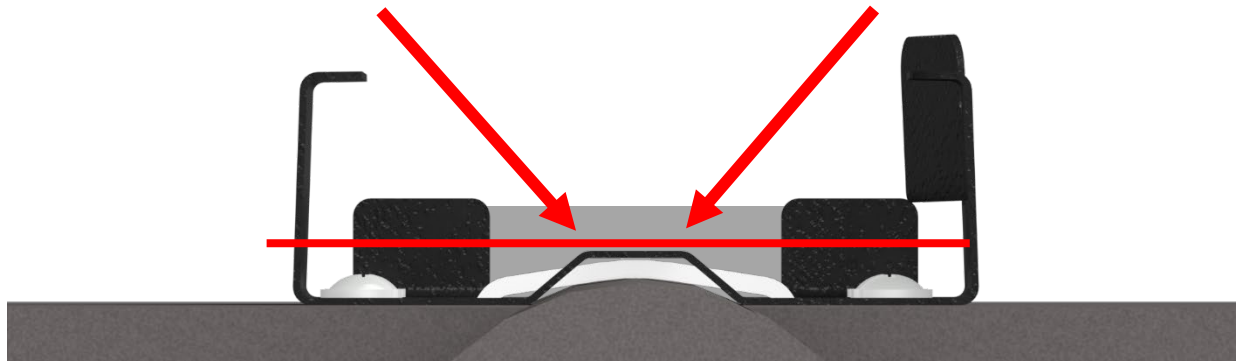
- **IMPORTANT! THE COM-BOX MUST BE IN REACH OF THE DRIVER / CO-DRIVER TO OPERATE THE BUTTONS!**
- **IMPORTANT! ENSURE THERE IS SUFFICIENT SPACE AT THE SIDE OF THE UNIT TO ENABLE THE ANTENNA / EXTENSION TO BE FITTED AND SLIDE THE UNIT INTO THE BRACKET!**



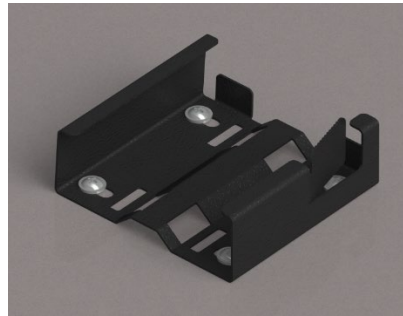
Installation of the Com-Box unit with bracket on the dashboard using bolts. **This must be in a CENTRAL location and not as indicated above, only in front of the co-driver.**



IMPORTANT! No bolt/screw heads or cable/zip ties can protrude over the red line as marked below.



Cable / zip tie fixture

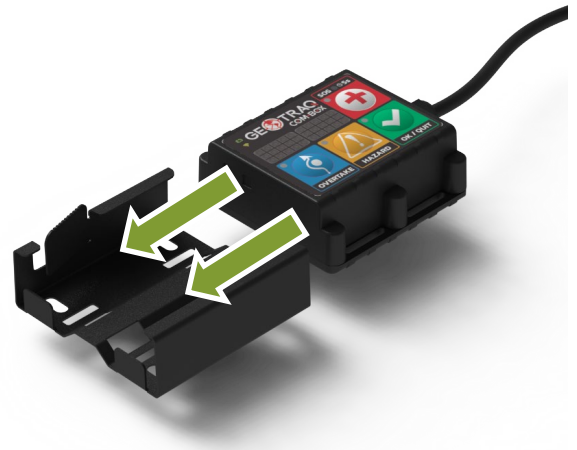


Screw / bolt fixture



Com-Box unit installed in bracket

- When the mounting bracket is securely installed, you can slide-in the Com-Box unit in.
- When slided in you MUST lock the device in place by pushing the top locking mechanism.



IMPORTANT! THE ANTENNA NEEDS AT LEAST 55mm ON ALL SIDES TO WORK PROPERLY! MAKE SURE NOT TO PLACE IT RIGHT NEXT TO OTHER METAL COMPONENTS!

STEP 6 – CHECK THE STATUS OF THE RALLY SAFETY SYSTEM.

- First, make sure the antenna is connected (optional extension cable and antenna)
- Second, check the blue connectors (buzzer) are tight
- Third, check the connection of the black connectors between the GPS Tracker and the Com-Box unit
- Finally check the connection of the 2 power terminals (positive and negative)

IMPORTANT! WHEN CONNECTING THE POWER TERMINAL MAKE SURE YOU HAVE THE PROPER POLARITY – RED is POSITIVE, BLACK is NEGATIVE!

IMPORTANT! IF ALL THE COMPONENTS ARE CONNECTED PROPERLY, THE COM-BOX UNIT WILL DISPLAY A “GREEN STATUS” ON THE BATTERY ICON AND “BLUE/GREEN STATUS” on the RADIO ICON

STEP 7 – FINAL INSPECTION AT SCRUTINEERING

- Install the cables loosely using only a few cable ties and in such a way that they can be clearly checked at scrutineering.
- Only **after** you receive **APPROVAL** from the Scrutineer and/or the GPS Technician, you can fully fasten the cables onto the vehicle using cable ties. **DO NOT** overuse cable ties!
- **DO NOT** use insulating or any other tape to group the cables.

- **IMPORTANT! DO NOT PLACE THE CABLES FOR THE SYSTEM IN DIFFICULT OR HIDDEN PLACES (INSIDE THE DASHBOARD OR HARD TO REACH LOCATIONS). THE INSTALLATION WILL BE CHECKED TO ENSURE THE SYSTEM AND ADDITIONAL COMPONENTS ARE PROPERLY INSTALLED AND OPERATIONAL AT SCRUTINEERING AND IF REQUIRED, YOU WILL NEED TO REROUTE THE WIRING.**

STEP 8 – WATCH THE VIDEO OF HOW TO USE THE SYSTEM

BATTERY STATUS

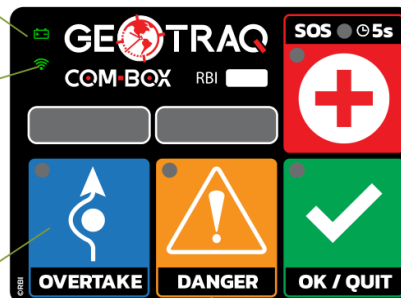
- 🟢 - EXTERNAL POWER
- 🔴 - NO EXTERNAL POWER
- 🔴 (BLINKING) - (BLINKING) INT. BATTERY EMPTY

RADIO STATUS

- 🟢 - RADIO OK
- 🔴 - SLEEP MODE, NO RADIO

OVERTAKE FUNCTION

DANGER BEACON



EMERGENCY SOS BEACON

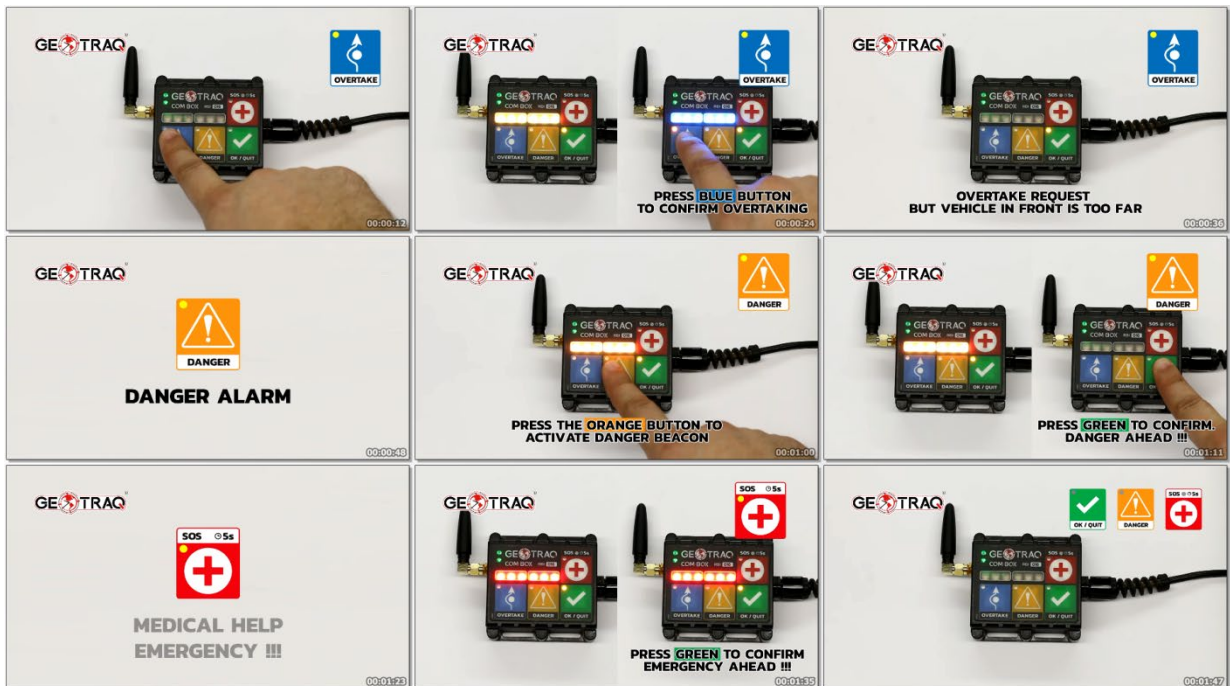
- PRESS AND HOLD UNTIL ACTIVATED

CONFIRM / QUIT BUTTON

- On the following link, you can learn how to operate with the Com-Box:

<https://www.youtube.com/watch?v=6hSXuu6DcyE>





STEP 9 – RETURNING THE SYSTEM

When it's time for you to return the system from your vehicle you **MUST** do this in the following order:

- First disconnect the negative (-) wire, then disconnect the positive (+) wire from the cable from your vehicle's battery at the female quick connect terminals.
- Second disconnect the COM-BOX - TRACKER cable
- Third disconnect the Buzzer – COM-BOX cable

- **IMPORTANT! WHEN YOU RETURN THE SYSTEM TO THE GPS DESK, YOUR EQUIPMENT WILL BE CHECKED FOR DAMAGE & DEFECTS AND IF FOUND – YOU WILL BE REQUIRED TO PAY FOR THE DAMAGE TO THE EQUIPMENT ACCORDING TO THE GEOTRAQ PARTS LIST!**