



Bulletin 2 : Service

To: All Competitors/ Crew
From: Clerk of Course
Number of Pages: 2 Attachments: 0

1 Service

1.1 Service Area Map

Key:

Teal path - access to the service area for teams and spectators

Blue Area- Parking for volunteers, spectators, and additional crew

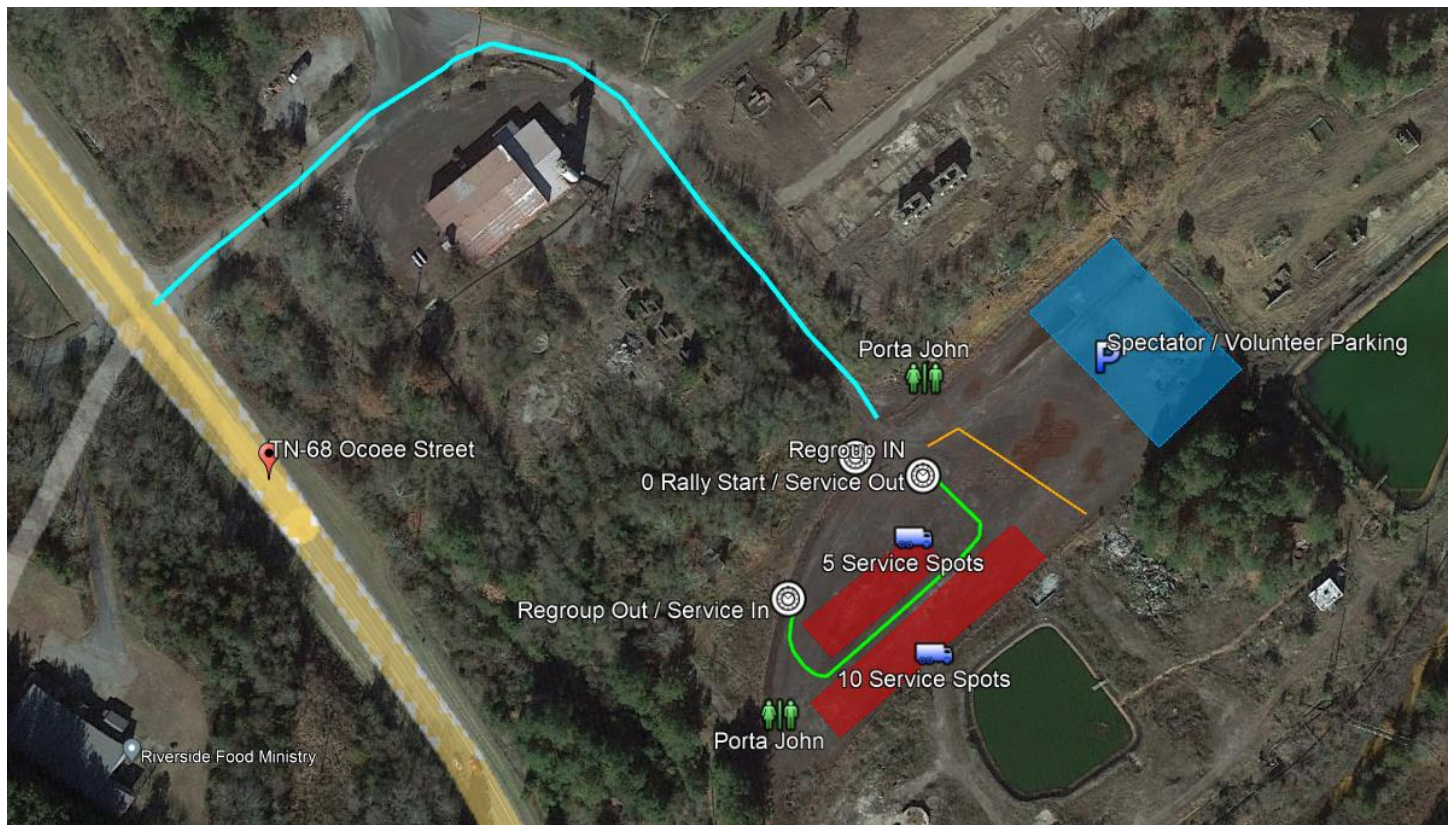
Red Area – Service locations that are delineated by orange paint. All service locations are 30 ft by 50 ft

Green Path - Traffic flow of race vehicles during the rally

Orange path - fencing to separate the service area from the parking area

Green Symbols – locations of portable toilets

White clocks – control locations





Bulletin 2 : Service

1.2 Service Area GPS Coordinates

Service Area : 34.999115, -84.381802

Service Access Gate: 34.999909, -84.384527

1.3 Service Area Notes

The service area is generally flat and smooth. It does have a top layer of fine dust. Ground clothes are highly recommended for service stalls.

No power will be available in the service park.

Camping is allowed, the Clerk of Course will need to be made aware of your intent to camp.

The gate the access gate will be locked during the night, but no official security will be provided by the rally.

All people accessing the service park can must sign a waiver.

The service area will be accessible from Thursday afternoon through Sunday morning. Access at night will require contact with the Clerk of Course.

Andrew Frick
Clerk of the Course