



Bulletin 1 : Draft Schedule and Maps

To: All Competitors/ Crew

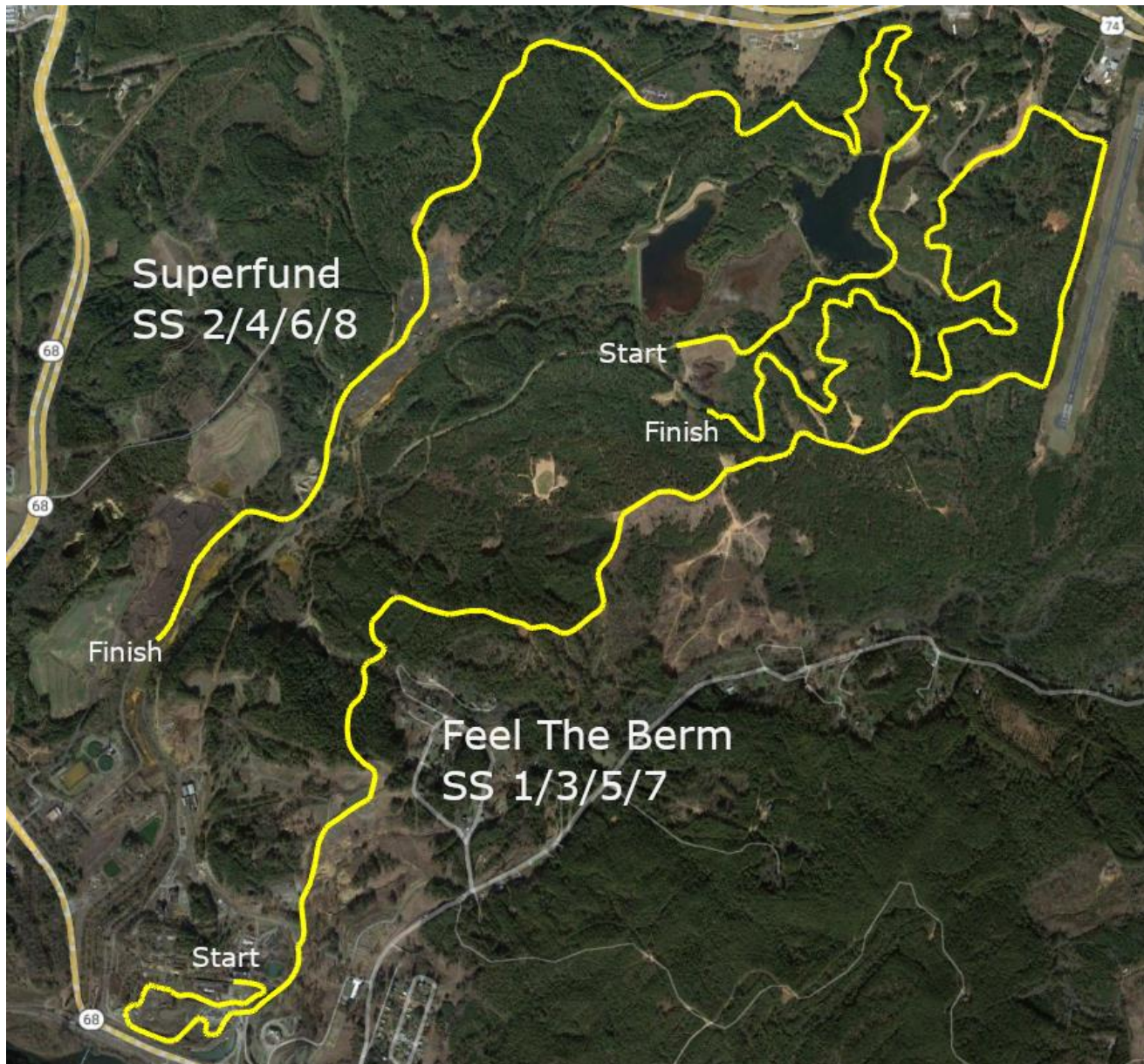
From: Clerk of Course

Number of Pages: 2 Attachments: 1

1 Stage Maps

1.1 Feel the Berm & Superfund

Due to some ongoing road repair at the site by the landowner the stage may change slightly.





Bulletin 1 : Draft Schedule and Maps

1.2 Pit of Despair

Due to some ongoing road repair at the site by the landowner the stage may change slightly.



2 Draft Stage Schedule

The attached stage schedule is a draft. Due to the ongoing road repair some controls may need to move and distances may change slightly.

Andrew Frick
Clerk of the Course

Copperhill Veterans Day Rally Stage Schedule

Leg 1 Saturday Nov 11, 2023							
Mileage							
TC/SS	Location	Stage	Transit	Total	Lateness Time	Transit Time	First Due
0	MTC Out (Copperhill Industries)						11:20
	Section 2 Fuel Distances:	9.9	2.1	12.0			
1			1.4			5	11:25
SS1	SS Feel the Berm 1	6.11			15		11:28
2			0.14			5	11:48
SS2	SS Superfund 1	3.78			10		11:51
2A	Regroup In		0.58			5	12:06
2B	Regroup Out / Service In				Regroup Time:	5	12:16
	Service A (Copperhill Industries)					15	
2C	Service Out						12:31
	Section 3 Fuel Distances:	9.9	3.5	13.4			
3			1.4			5	12:36
SS3	SS Feel the Berm 2	6.11			15		12:39
4			0.14			5	12:59
SS4	SS Superfund 2	3.78			10		13:02
4A	Regroup In		0.58			5	13:17
4B	Regroup Out / Service In		1.4		Regroup Time:	5	13:27
	Service B (Copperhill Industries)					15	
4C	Service Out						13:42
	Section 3 Fuel Distances:	9.9	2.1	12.0			
5			1.4			5	13:47
SS5	SS Feel the Berm 3	6.11			15		13:50
6			0.14			5	14:10
SS6	SS Superfund 3	3.78			10		14:13
6A	Regroup In		0.58			5	14:28
6B	Regroup Out / Service In				Regroup Time:	5	14:38
	Service C (Copperhill Industries)					15	
6C	Service Out						14:43
	Section 3 Fuel Distances:	9.9	2.1	12.0			
7			1.4			5	14:48
SS7	SS Feel the Berm 4	6.11			15		14:51
8			0.14			5	15:11
SS8	SS Superfund 4	3.78			10		15:14
8A	Regroup In		0.58			5	15:29
8B	Regroup Out / Service In				Regroup Time:	5	15:39
	Service D (Copperhill Industries)					60	
8C	Service Out						16:39
	Section 3 Fuel Distances:	10.2	2.4	12.6			
9			1.16			10	16:49
SS9	SS Pit of Despair 1	5.1			15		16:52
10			0.05			30	17:37
SS10	SS Pit of Despair 2	5.1			15		17:40
	MTC In (Copperhill Industries)		1.16			5	18:00
Leg 2 Totals		49.8	8.0	57.8			
Rally Totals		49.8	8.0	57.8			

Estimated Fastest ET:

1	Hour
14.6	Mins