

# 100 ACRE WOOD

Bulletin #7

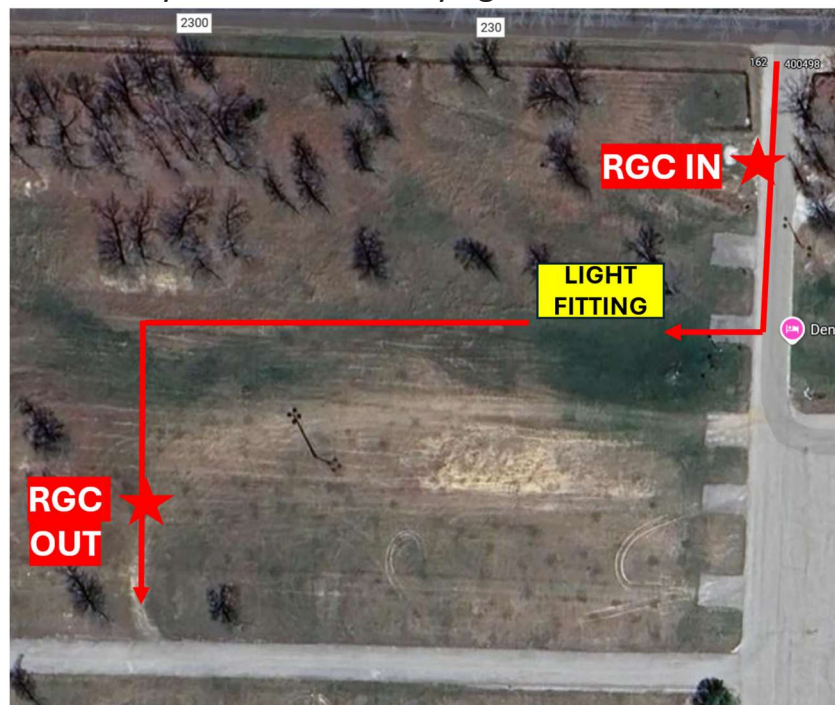
2025 Rally in the 100 Acre Wood

March 13, 2025

To: All Participants

Subject: Light Fitting Zone, Power Stage Extra Minute, and Route Book Changes

1. Teams will be allowed to fit auxiliary lights for section 6 within the Regroup Control after TC16A under the following conditions:
  - No work is allowed within the marked zone other than for two-team personnel to fit auxiliary lights, using hand tools, and under the supervision of rally officials at all times.
  - The two-team personnel may enter the zone only after their respective car has entered the RGC and with approval from a rally official, and must leave immediately after the auxiliary lights have been fitted.



2. The Power Stage extra minute will be assigned at TC16B.
3. After physical review of the Danger Dots shown in the route book, remove DANGER from the following instructions and replace it with a Single Caution:

Stage Numbers	Instruction Number
2/5	4
10/15	2
10/15	27
12	10
12	11

There will NOT be a Danger Dot at those locations.

Terec Willson  
Clerk of the Course