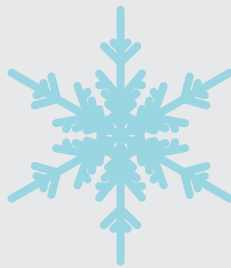


2025 FIA International Rally
2025 JAF 東日本ラリー選手権 第2戦



RALLY GUIDE 1

2025.2.7-9 <http://www.rally-tsumagoi.com>



Note;

This document is designed as a guide and has no regular effect.

For rules, you must comply with the 2025 FIA REGIONAL RALLY SPORTING REGULATIONS, the 2025 JAF Domestic Sporting Regulations, the 2025 JAF Japanese Rally Championship Regulations, the Rally of Tsumagoi 2025 Supplementary Regulations and the Bulletins.

◆◆◆ 目 次 ◆◆◆

1	Event overview	-----	4
	About the Rally of Tsumagoi 2025	-----	5
	About Tsumagoi Village	-----	6
2	Contact details of the organiser	-----	7
	Event Secretariat, Rally HQ, Media office	-----	7
	Senior Officials and sporting officials	-----	8
3	Programme.	-----	8
	Schedule before the rally	-----	8
	Schedule during the rally	-----	9
4	Entries	-----	9-11
5	Service Park	-----	11
6	Fuel and tyres	-----	12
7	Vehicles	-----	12
8	Insurance	-----	12
9	Reconnaissance / GPS tracking	-----	13
10	Scrutineering, sealing and marking, advertising	-----	14
11	Start	-----	15
12	Welcome Party	-----	15
13	Media	-----	15
14	Credentials and vehicle passes	-----	15
-	Appendix 1 Itinerary	-----	16
-	Appendix 2 Route maps	-----	18
-	Appendix 3 Stud tyres	-----	19

◆◆◆ 1. Event Overview ◆◆◆



Name of the Rally	Rally of Tsumagoi 2025.
Title	2025 FIA International Rally 2025 JAF East Japan Rally Championship Round 1
Format	JAF-approved international rally ; JAF-approved number 2025-TBA
Date and time	Friday 7 - Sunday 9 February 2025
Rally category	Special Stage Rally
SS course overview	Snow (including icy snow surfaces)
Total distance and number of SS	Total distance of SS approx. 57.08 km Number of SS 10 planned

Organised by: **JAF-accredited club Toyota Motorsports Club (TMSC)**
JAF member organisation NPO MOSCO (MOSCO)
Rally of Tsumagoi 2025 Organising Committee.

Co-organised by: **Tsumakoi Village • Tsumakoi Village Motorsports Promotion Organisation**
 K.I.T. Service Company, Ltd. • Carrosser Co., Ltd. • Cinq, Ltd. • Nagano Police Station, Gunma Prefecture • Nakanojo Public Works Office, Gunma Prefecture • Tsumakoi Village Assembly •

Co-operation: Tsumakoi Village Chamber of Commerce • Tsumakoi Village Tourism Association • Baragi Highland Tourism Association • Asama Kogen Tourist Association, Kazawa Onsen Tourist Association, Manza Onsen Tourist Association, Hotel Karuizawa 1130, JMRC Kanto Rally Committee, JMRC Gunma Rally Committee, JMRC Saitama Rally Committee, etc.

1.1 About the Rally of Tsumagoi 2025

The Rally of Tsumagoi is a four-wheeled vehicle speed rally competition held for the 19th time in Tsumagoi Village, located in north-west Gunma Prefecture and Japan's largest exporter of highland cabbages. Rallies can be held in all weather conditions, but winter rallies on snow and ice are few and far between in Japan.

Tsumakoi Village has many closed snow roads during the winter season. The rally was first held in 2007 as the BICC Snow & Ice Rally 2007 in order to make effective use of these roads and to revitalise the local area by holding the rally in winter, welcoming many visitors to the village and at the same time to promote understanding of motor sports among more local people.

In 2008, the event was renamed the BICC Rally of Tsumagoi, and in 2012 it became part of the JAF East Japan Rally Championship, and in 2016 it became the FIA International Rally of Tsumagoi, one of the few international rally events in Japan. It goes without saying that one of the factors behind the continuation of the event over the years has been the full cooperation of Tsumagoi Village in clearing snow from the SS course, which requires a great deal of labour.

However, the 2020 event was cancelled due to damage to roads throughout Tsumagoi Village as a result of Typhoon 19, which caused extensive damage throughout eastern Japan, and the 2021 and 2022 events were cancelled just before they were due to the need to prevent the spread of the COVID 19.

And in 2023, with the COVID 19 is over, the event was held as the first round of the APRC Asian Rally Championship, and the first snow rally in the APRC.

In 2025, while adding the FIA International Rally, JAF East Japan Rally Championship and categories, we will be preparing to organise a rally that participants and officials can enjoy together, in accordance with the Rally of Tsumagoi's origins and the BICC Rally's objectives.

Rally of Tsumagoi Organising Committee



1.2 About Tsumagoi Village

Tsumagoi Village is located in the north-west of Gunma Prefecture, bordered on the east by the towns of Naganohara and Kusatsu, and on the west, south and north by Nagano Prefecture. The outer periphery of the village, except for the eastern part, is covered by a series of 2,000 m-high mountains, including Mount Asama, Mount Yunomaru, Mount Azuma (Mt Shiazan) and Mount Shirane, forming the Great Dividing Range of Japan.

The Agatsuma River flows from west to east through the centre of the village, and most of the villages are scattered along this basin. The geology is mostly volcanic ash soil with corrosive soils, making the area suitable for highland vegetables, and in particular, the number of highland cabbages shipped is the highest in the country.

The climate is characterised by a large daily temperature difference, with the average annual temperature being around 8°C. The highlands are cool even in summer. The temperature and humidity in particular make it ideal for summer retreats, and the Asama Plateau area has recently come into the limelight as a major holiday resort.

The origin of Tsumagoi Village is that during the eastern expedition of the 12th Emperor Keiko's son, Yamatotakeru no Mikoto, his beloved wife Ototachibana-hime threw herself into the sea to appease the anger of the god of the sea. On his way back to the east, he stopped at Usuhizaka (today's Torii Pass) and mourned for his deceased wife, saying 'Azumahaya' (Oh, how I miss my wife), thus naming the village Tsumagoi after her.

Tsumagoi Village is also the birthplace of motor sports. In 1955, after the post-war period had settled down, the first All Japan Endurance Motorcycle Race (Asama Kogen/Asama Volcano Race) was held as the first big event in Japan, with 19 manufacturers and 81 cars participating, on public roads in Tsumagoi Village. The "Asama" race, which continued until 1959, produced many famous riders and drivers, and this rally has also used the roads used for public road races as a travel section, with the Asama Circuit, which remains only partially intact, used as an SS.

Based on this history, the Tsumagoi Village Motorsports Promotion Organisation was established in 2009, headed by the mayor of Tsumagoi Village, with the participation of various departments of the municipal office, tourism-related organisations and organisations involved in motor sports in the village. Through various projects, the organisation aims to develop sound motor sports, improve safe driving techniques and morals, and tackle environmental issues, while pursuing new forms of motor sports in Tsumagoi Village, the birthplace of motor sports, and contributing to regional revitalisation and the promotion of traffic safety.



1957 2nd Asama Volcano Race.



Mitsubishi Colt 1000F undergoing high-speed testing in



2014 Monte in Tsumagoi, Asama Stage The late Kenjiro Shinozuka and Kumagawa Village Mayor Scenes from the 2018 spectator SS

◆◆◆◆ 2 Contact details of the organiser ◆◆◆◆

2.1 The Secretariat

Rally of Tsumagoi Secretariat (in NPO MOSCO Takasaki Office)

2458-13, Kurgano-cho, Takasaki, Gunma 370-1201

tel +81 27-386-4365 / fax +81 27-386-4375

Website: <http://www.rally-tsumagoi.com>

Email: <mailto:office@rally-tsumagoi.com>

2.2 Rally HQ

Hotel Karuizawa 1130.

1453-2, Kamahara, Tsumakoi-mura, Agatsuma-gun, Gunma 377-1402

TEL +81 27-386-4365 (forwarded from MOSCO Takasaki office)

Website: <https://www.karuizawaclub.co.jp/hotel1130/>

2.3 Media office and application procedures

Media office (in NPO MOSCO Takasaki office)

2458-13, Kurgano-cho, Takasaki, Gunma 370-1201

tel 027-386-4365 / fax 027-386-4375

Email: media@rally-tsumagoi.com

Pre-registration is required to cover the Rally of Tsumagoi. The registration is open from Monday 16 December 2024 to Monday 20 January 2025. Please register on the media page of the Rally of Tsumagoi website.

2.4 Organisers

Toyota Motorsports Club (JAF Approved Club 13001)

Toyota Kudan Building B1, 2-3-18 Kudan Minami, Chiyoda-ku, Tokyo 102-0074, Japan

tel: +81 3-3221-9950 fax: 03-3221-9924

WEB site: <http://toyota-motorsports-club.jp/>

MOSCO (JAF member organisation 10003, abbreviated MOSCO)

96-5, Imai, Tsumagoi-mura, Agatsuma-gun, Gunma 377-1521 (Organisation headquarters)

tel +81 279-97-4382 fax +81 279-97-4382

WEB SITE: <http://www.n-mosco.com> / Email: office@n-mosco.com

2.5 Senior Officials and Rally Officials (tentative)

Senior Officials

Convention president	Sakae Kumagawa	(Mayor of Tsumagoi Village - Chairman of Tsumagoi Village Motorsports Promotion Organisation)	
Congress Advisor	Masanori Sekiya	Chairman, Toyota Motorsports Club	
	Eishi Watanabe	(Chairman of Tsumakoi Village Commerce and Industry)	Michiro Okamura (Chairman of Tsumakoi Village Tourism Association).
	Tatsuo Watase	(Head of the Barragi Plateau Tourist Association)	Tetsuro Muramatsu (Head of Asama Highlands Tourism Association).
	Yoji Sato	(Head of Kanazawa Hot Springs Tourism Association).	Toru Tsukamoto (Head of Manza Hot Springs Tourism Association).

Organizing committee

Chairman	Haruo Takakuwa	(President of NPO MOSCO).	
Org. committee member	Yoshiyuki Nishikubo	(NPO M.O.S.C.O.).	Hiroshi Suzuki (NPO M.O.S.C.O.).
	Takayuki Koseki	(JAC Chairman)	Mamoru Namiki (Chairman, NPO Gunma Rally Network).

Stewards

Chief Steward	Takahisa Oguchi	Chairman of the JMRC National Committee
Steward	Toshinori Nishii	Chairman of the JMRC Kanto Rally Division

Rally Officials

Clerk of the Course (COC)	Sadatoshi Ando
Deputy Clerk of the Course (DCOC)	Mitsuhiro Fujita
Assistant COC (course)	Yukinori Fukumura
Assistant COC (Results)	Naoki Kurosaki
Assistant COC (Results)	Masaya Yamaguchi
Chief Scrutineer	Toshiaki Orihara
Chief Secretariat	Koji Takahashi
Secretariat	Mikishiro Horiguchi
Secretariat	Makoto Nagai
Chief Safety Officer	Hirokazu Somemiya
Chief Medical Officer	TBA
Medical Officer	TBA
Medical Officer	TBA
Service Park / Regroup Coordinator	Takuya Sugimura
Competitor Relations (CRO)	Shigeyuki Goto

◆◆◆◆◆ 3 programmes ◆◆◆◆◆

3.1 Schedule before the rally (tentative)

Month Day	Hours.	item	Location.
Mon 16 Dec	09:00	Supplementary Regulation published	https://www.rally-tsumagoi.com
Tue 17 Dec	09:00 -.	Entry open	entry@rally-tsumagoi.com
		Media registration applications open	media@rally-tsumagoi.com
Fri 10 Jan	21:00.	Entry closed	entry@rally-tsumagoi.com
		Media registration application deadline	media@www.rally-tsumagoi.com
Fri 17 Jan	21:00.	Entry list announced	https://www.rally-tsumagoi.com
Sun 26 Jan	19:00	Road book and route map published	Rally Secretariat

3.2 Schedule during the Rally (tentative)

Month Day	Hours	item	Location.
Fri 07 Feb	10:00-18:30	Rally headquarters (HQ) opens	Hotel Karuizawa 1130
	10:30	Official noticeboard opens	https://www.rally-tsumagoi.com
	10:30-11:00.	Administrative Checks	Rally HQ
		Distribution of Road Books and other materials	
	11:00 -.	Service Park open	Hotel Karuizawa 1130
	11:00-15:00.	Reconnaissance	
	13:00-15:00	Media Reception	Rally HQ
	13:30-17:00	Scrutineering	Hotel Karuizawa 1130
	17:00 -	1 st Steward Meeting	Hotel Karuizawa 1130 Steward room
	17:30	Start list published	https://www.rally-tsumagoi.com
Sat 08 Feb	08:00-20:00	Rally headquarters (HQ) opens	Hotel Karuizawa 1130.
	09:00 -.	LEG 1 start	Hotel Karuizawa 1130.
	Around 17:00	LEG 1 finish, Parc Ferme IN	Hotel Karuizawa 1130.
	19:00 -21:30	Welcome Party	Hotel Karuizawa 1130.
Sun 09 Feb	07.00-18.00	Rally headquarters (HQ) opens	Hotel Karuizawa 1130.
	08:00 -.	LEG 2 start.	Hotel Karuizawa 1130.
	Around 14:00 -	LEG 2 finish, Parc Ferme IN	Hotel Karuizawa 1130.
	Around 14:10 -	Post-rally Scrutineering	Hotel Karuizawa 1130.
	15:00 (tentative)	Provisional classification published	https://www.rally-tsumagoi.com
	15:30 (tentative)	Official results	https://www.rally-tsumagoi.com
	15:30	Prize-giving Ceremony	

◆◆◆◆◆ 4 entries ◆◆◆◆◆

4.1 Title

- FIA International Rally
- 2025 East Japan Rally Championship Round 1

4.2 Entry criteria, number of entries

The maximum number of entries is 60. If there are more than 60 entries, the organisers reserve the right to make a selection and priority will be given to entries from FIA International Class participants and JAF East Japan Rally Championship participants.

4.3 Participation acceptance period

Registration opens Tuesday, 17 December 2024, from 9:00 hrs.

Deadline for entry; Friday, 10 January 2025, 21:00

4.4 Where to apply the entry forms

address : 2458-13, Kurgano-cho, Takasaki, Gunma 370-1201
 Name : NPO M.O.S.C.O. Rally Secretariat
 Tel. : +81 27-386-4365
 Fax : **+81 27-386-4375**
 E-Mail. : entry@rally-tsumagoi.com
 URL : <http://www.rally-tsumagoi.com>

4.5 Entry procedure

Entries must be made by filling in the following forms prescribed by the organisers and sending them to the above-mentioned Rally Office by fax or email during the application period.

(Applications by post will not be accepted).

The original entry form must be signed and submitted at the registration desk.

Documents submitted

- Entry form set
- Promotional information
- Entry booklet/Order form
- Application form for use of on-board camera (if on-board camera is used)
- Copy of vehicle inspection certificate (only for vehicles registered in Japan)
- Carnet certificate issued by the ASN of the country in which the vehicle is registered (vehicles temporarily imported from abroad).
- A copy of the motor insurance policy valid for rally or a copy of the rally insurance application form.
- Image data (driver, Co-driver and Rally car)

4.6 Entry fees

All categories

Per a car JPY 85,000. (tax not included)

The above costs include the contents of the Art. 4.7 entry package.

4.7 Entry packages

	International Rally	East Japan Rally Championship	
Road Book	1	1	
Route map	1	1	
Official programme	2	2	
Entrant pass	2	2	
Service crew pass	5	5	
Service vehicle pass	1	1	
Service park space	5m x 5m	5m x 5m	
Welcome party entry fee for crew	2	2	

Additional documents, passes and additional service spaces listed above should be applied for in the Entry booklet.

4.8 Accommodation arrangements

If team members or service personnel wish to stay at Hotel Karuizawa 1130, please indicate on the order form the date and number of people you wish to stay. Please refer the accommodation costs etc. on the order form.

4.9 How to pay entry fees

The entry fee, additional accommodation and other payments can be made at the time of registration by bank transfer to the bank account below or by credit card via the URL below.

payee

The Gunma Bank, Ltd.

Branch name; Numata Branch (210)

Deposit type; Savings account

Account no.; 1482223

Name of account; NPO MOSCO

Abbreviated name; Tokuhi Mosco.

Please use the following URL for credit card payment.

<https://www.n-mosco.com/checkout/>

Payments must be in Japanese yen only and all remittance charges must be borne by the entrant. Cheques are not acceptable.

4.10 Entry fee refunds.

Entry fees are refundable in the following cases

- (1) If the entry is not accepted (refundable minus an administration fee of JPY 5,000)
- (2) If the rally is not held (full refund minus bank transfer fee)

However, if the rally is cancelled 15 days or more before the rally due to a major disaster or the spread of COVID 19, the rally will be cancelled.

In the event of unavoidable circumstances, 70% of the total participation fee will be refunded.

- (3) Organisers will refund 50% of the entry fee to entrants who are unable to compete due to force majeure (as duly certified by their ASN).

◆◆◆◆◆ 5 Service parks ◆◆◆◆◆

5.1 About the service parks

The service park will be located at Hotel Karuizawa 1130.

The service park will open at 11:00 on Friday 7 February.

5.2 Notes on service parks

Depending on the weather, the rally may be held in February, when temperatures can drop below -15°C and there may be blizzards and strong winds. Please be prepared to wear suitable clothing and take measures to prevent service tents and other equipment from being blown away by strong winds.

There are no litter bins in the Service Park, so please make sure you take all your rubbish home with you.

◆◆◆◆◆ 6 Fuel/tires ◆◆◆◆◆

6.1 Fuel

Between the end of the official scrutineering and the rally finish, the rally cars must refuel at the refuelling stations designated by the organisers in the Road Book.

6.2 Tyres

6.2.1 Tyre usage rules are subject to the 2025 East Japan Rally Championship Regulations.

6.2.2 Only rally cars with 2-wheel drive will be allowed to use studded tyres. See Appendix 3 for further details.

◆◆◆◆◆ 7 Vehicles ◆◆◆◆◆

7.1 Rules pertaining to vehicles

Rally cars participating in this rally must comply with Japanese domestic laws and regulations, including the Road Trucking Vehicle Law and the Road Traffic Law, and must also comply with Appendix J of FIA International Sporting Code or the JAF National Competition Vehicle Regulations (light pots, exhaust volume, etc.).

7.1.1 East Japan Rally Championship

Vehicles complying with the 2025 Japanese Rally Championship Regulations, Art.3.

7.1.2 Other classes

In addition to vehicles compliant with the 2025 Japanese Rally Championship Regulations, participation in RB vehicles is permitted.

◆◆◆◆◆ 8 Insurance ◆◆◆◆◆

8.1 Insurance

All vehicles participating in the rally (vehicles registered overseas) must have compulsory liability insurance and optional personal property insurance valid for rally competition.

Competition insurance

Vehicles registered in Japan must have voluntary personal property insurance valid for this rally competition.

The amount of insurance shall be at least JPY 20 million for bodily injury, JPY 2 million for property damage and JPY 10 million for passengers.

For passengers, the JMRC Mutual Aid Scheme (compensation) is also acceptable.

*If you don't have subscribed to competition insurance, the Secretariat will accept your application for insurance valid for this rally.

Download the competition car insurance application form from the Rally of Tsumagoi website.

◆◆◆◆◆ 9 Reconnaissance/GPS tracking ◆◆◆◆◆

9.1 Recce Procedure.

9.1.1 Recce will be held on Friday 7 February for crews under the control of the organiser.

Recce registration will take place at the same time as Admin Checks on Friday 7 February, 10:30-11:00 at the Rally HQ, where each crew will be given a Recce card and vehicle identification card.

9.1.2 Details of the reckoning schedule will be in accordance with Detailed Regulations 2 of the Special Regulations.

9.2 Recce vehicles

No livery vehicles, and not a rally car entered the rally. Participants must make their own arrangements.

9.3 Tyres for recce

Tyres that can be used for recce shall be snow tyres for general vehicles.

9.4 Crew compliance

9.4.1 Each crew must affix a vehicle identification card during the recce.

9.4.2 Each crew can run each special stage twice. However, a Special Stage that overlaps the same section may be run twice in one place as a single stage.

9.5 Traffic regulation

9.5.1 During the Recce, crew must comply with all traffic laws and regulations and, in addition, must follow any instructions of the organisers as notified in the Supplementary Regulations or in official notices. In all cases, they must respect the safety and rights of other road users. Officials may monitor the operation of the recce vehicles on the recce route visually or by means of measuring equipment or photographic video. All infringements will be reported to the Stewards, which may impose penalties such as not being allowed to start the rally.

9.5.2 The legal speed must not be exceeded on special stages and on all roads during the recce. Violations of this will be penalised by the Stewards.

9.6 GPS tracking devices

Safety Tracking

All rally cars in this rally must be equipped with a GPS safety tracking system.

The Rally of Tsumagoi will install the Rally Stream tracking system in all cars for safety and competition progression reasons, and all cars will be loaned a smartphone with the same system compatible with this system for a fee.

Tracking system fee 10,000 yen per unit

As accurate tracking is difficult when using personal smartphones due to different communication conditions depending on the carrier on which the phone is equipped, dedicated smartphones with the same model and carrier must be used.

◆◆◆◆ 10 Scrutineering, sealing and marking, advertising ◆◆◆◆

10.1 Official Scrutineering

10.1.1 Location : Official Scrutineering area Hotel Karuizawa 1130

Date : 7 February 2025 (Friday) 13:30-17:00

10.1.2 Items to be carried on the rally cars

2 emergency stop signs (triangular), red light, tow rope, first aid chemicals, tyre chain, shovel.

A3 size "OK" and "SOS" cards (to be kept in an easily accessible position in the vehicle)

10.1.3 Installation of on-board cameras

If you wish to install a camera in your car, you must submit a Car Camera Use Application Form when you apply to take part.

The camera must be installed inside or outside the car by the time of the official scrutineering. A permit sticker will be attached by the vehicle inspector at the official scrutineering, and filming without permission is prohibited.

Please note that the copyright for any footage taken by this camera belongs to the organisers, and you may be asked to submit the footage to the organisers.

10.2 Post-rally scrutineering

10.2.1 Location and date of post-rally scrutineering

Location : Scrutineering area Hotel Karuizawa 1130

Date and time : 9 February 2025 (Sunday), from around 17:00

10.3 Advertisements and rally plates

10.3.1 Window.

Advertisements on the vehicle body, including the roof, are permitted. However, advertising above the front window of the vehicle is only permitted on vehicles registered outside Japan. The size of the advertisement must not exceed 10 cm in height from the top of the front window and 8 cm in height from the top edge of the rear window.

10.3.2 Optional advertising

Entrants who accept voluntary advertising by organisers must reserve advertising space in accordance with Appendix 4 of the Supplementary Regulations.

10.3.3 Alcohol and tobacco advertising

In Japan, there are no restrictions on advertising on rally cars and uniforms, nor on advertising relating to alcohol and tobacco.

10.3.4 Rally plates and numbers

Organisers will supply a set of rally plates and number panels in accordance with article 27 of the 2025 FIA Regional Rally Regulations.

These must be affixed to the vehicle by the time of the official scrutineering in accordance with the Supplementary Regulations.

A fine of 54,000 yen is imposed for any violation of this.

◆◆◆◆◆ **11 Start** ◆◆◆◆◆

Date and time; 8 February 2025 (Saturday) First car at 9:00 -.

Place; Hotel Karuizawa 1130 Start area

Methods; The competitors start in sequence at the signal of the starting flag given by the guest of honour.

The start interval will be dictated by the officials.

◆◆◆◆◆ **12 Welcome Party** ◆◆◆◆◆

Date and time; Saturday 8 February 2025, 19:00-.

Place; Hotel Karuizawa 1130 Danro

Method; Standing buffet party with participation of guests and officials

Clothing; Team wear or casual (not rough!)

◆◆◆◆◆ **13 Media** ◆◆◆◆◆

Rally of Tsumagoi Media Office (in NPO MOSCO Takasaki office)

2458-13, Kurgano-cho, Takasaki, Gunma 370-1201

tel +81 27-386-4365 / fax +81 27-386-4375

Email: media@rally-tsumagoi.com

◆◆◆◆◆ **14 Credentials and vehicle passes** ◆◆◆◆◆

Details of credentials and vehicle passes are shown in the Communication.

Appendix 1.

International Rally of Tsumagoi 2025 ITINERARY Ver.1.0

23 August 2024

Start (Sections 1 & 2)		Saturday 8 February 2025			(Sunrise 6:41,Sunset 17:19)	
TC	LOCATION	SS dist.	Liaison dist.	Total dist.	Target time	First car due
0	Start - Start Ceremony (Hotel karuizawa1130)					10:00
	Start no Refuel. Distance to next refuel	(16.35)	(53.52)	(69.87)		
1	Omae		15.14	15.14	0:25	10:25
SS1	Omae Suzaka 1	5.48				10:28
2	Kadokai		20.62	26.10	0:45	11:13
SS2	Kadokai Panorama 1	5.39				11:16
3	Omae		10.91	16.30	0:30	11:46
SS3	Omae Suzaka 2	5.48				11:49
RZ	Refuel - J A 孀恋村 干俣SS		[6.85]		(0:38)	(12:27)
1	Distance to next refuel	(10.87)	(37.77)	(48.64)		
3A	Tyre Fitting Service IN		18.36	23.84	1:00	12:49
	Service A	(16.35)	(65.03)	(81.38)	0:45	
3B	Tyre Fitting Service OUT					13:34
3C	Regroup IN (MANZA HighWay)		4.10	4.10	0:10	13:44
3D	Regroup OUT				0:15	13:59
4	Kadokai		4.40	4.40	0:10	14:09
SS4	Kadokai Panorama 2	5.39				14:12
5	Omae		10.91	16.30	0:25	14:37
SS5	Omae Suzaka 3	5.48				14:40
RZ	Refuel - J A 孀恋村 干俣SS		[6.85]		(0:38)	(15:18)
2	Distance to next refuel	(5.48)	(27.96)	(33.44)		
5A	Tyre Fitting Service IN		18.36	23.84	1:00	15:40
	Service B	(10.87)	(37.77)	(48.64)	0:45	
5B	Tyre Fitting Service OUT					16:25
5C	Parc Fermé IN (Hotel karuizawa1130Parking)		8.20	8.20	0:20	16:45
Note 1 : Early check-in allowed at TC5A						
Saturday totals		27.22	92.64	114.38		

Section 1

Section 2

International Rally of Tsumagoi 2025 ITINERARY Ver.1.0

23 August 2024

Re-Start (Sections 3 & 4)		Sunday 9 February 2025			(Sunrise 6:40, Sunset 17:20)	
TC	LOCATION	SS dist.	Liaison dist.	Total dist.	Target time	First car due
5B	Parc Fermé OUT(Hotel karuizawa1130)					8:00
5C	Tyre Fitting Service IN		8.20	8.20	0:15	8:15
Service C		(10.87)	(35.81)	(41.20)	0:10	
5D	Tyre Fitting Service OUT					8:25
6	Omae		11.56	11.56	0:20	8:45
SS6	Omae Suzaka 4	5.48				8:48
RZ	Refuel - J A 孀恋村 干俣SS		[6.85]		(0:29)	(9:17)
3	Distance to finish	(16.26)	(63.19)	(79.45)		
7	Panorama L		12.07	17.55	0:40	9:28
SS7	Kadokai Panorama 3	5.39				9:31
7A	Tyre Fitting Service IN		15.40	20.79	0:35	10:06
Service D		(10.87)	(39.03)	(49.90)	0:20	
7B	Tyre Fitting Service OUT					10:26
7C	Regroup IN (Tsumagoi village office)		4.70	4.70	0:10	10:36
7D	Regroup OUT				0:10	10:46
8	Omae		8.10	8.10	0:15	11:01
SS8	Omae Suzaka 5	5.48				11:04
9	Panorama L		12.07	17.55	0:30	11:34
SS9	Kadokai Panorama 4	5.39				11:37
9A	Holding IN - Podium Finish (Hotel karuizawa1130)		17.70	23.09	0:40	12:17
	Parc Fermé IN (Hotel karuizawa1130)					(13:00)
Note 2 : Early check-in allowed at TC9A						

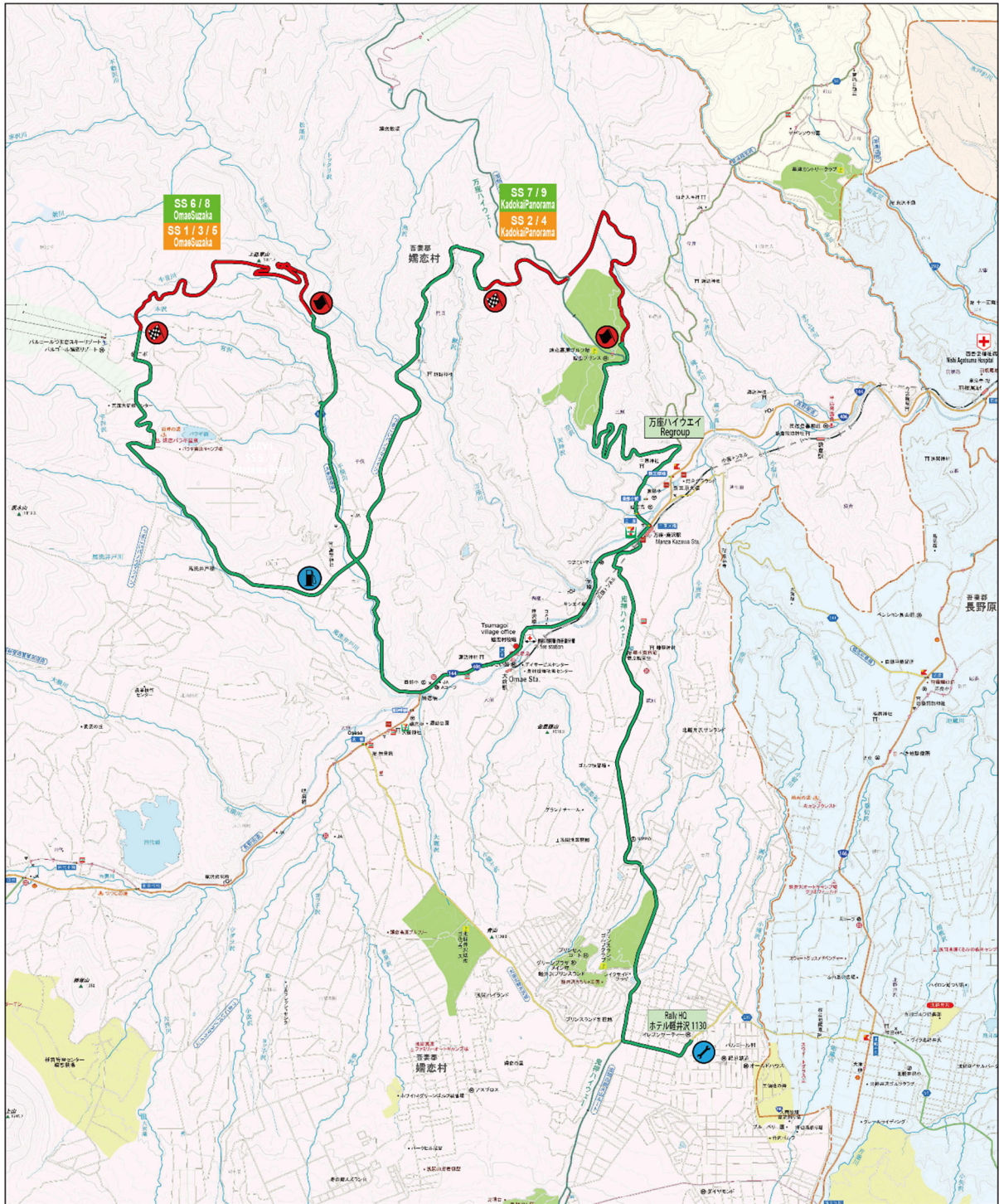
Section 3

Section 4

Sunday totals	21.74	89.80	111.54
----------------------	--------------	--------------	---------------

Totals of the Rally		SS	Liaison	Total	%
Saturday	5SS	27.22	92.64	114.38	23.8
Sunday	4SS	21.74	89.80	111.54	19.5
Total	9SS	48.96	182.44	225.92	21.7

Appendix 2.



Appendix 3.

Use of studded tyres

The use of studded tyres is permitted on two-wheel drive vehicles.

Until 2019, the use of studded tyres was restricted under Article 6 of Chapter 3, Article 2 of the JAF Domestic Competition Vehicle Regulations, and two-wheel drive vehicles were fitted with tyre chains on SS courses with a lot of snow. However, there were many cases of chains breaking or coming off during driving, and this was deemed dangerous, so in 2022 we submitted a special permit application to the JAF regarding the use of studded tyres in domestic rallies, and it was approved.

The specifications for studded tyres are as follows. If you are planning to participate, please use this as a reference for your preparations.

1. Tyres used

Snow tyres that can be driven on Japanese public roads and tyres that conform to this Appendix of the Supplementary Regulations.

Stud tyres to be used will be checked for stud shape, number of studs and protrusion at the time of scrutineering.

The use of studded tyres may be prohibited by the Clerk of the Course depending on the amount of snow accumulation.

If the amount of stud protrusion exceeds the regulations, the use of the relevant tyre will be prohibited from the next section onwards.

2. number of units used

The number of tyres used shall be as stated in the Special Regulations.

Stud tyres permitted for use during rallies.

The following snow studded tyres are permitted for use during the rally

The number of studs on the tyre must not exceed 20 per 10.0 cm in any part of the circumference.

Bylaws on studs permitted to be used.

1. Studs shall be solid, cylindrical and cut flat.
2. the cross section of the stud shall be cylindrical in any place.
3. studs shall be of a single material.
4. the stud tip shall have a minimum diameter of 2.5 mm and shall be cylindrical and cut flat.
5. The total length of the stud shall not exceed 20 mm.
6. the weight of the stud shall not exceed 4 grammes.
7. the shape and dimensions of the stud must not exceed those shown in the diagram to the right.
8. the maximum protrusion shall be within 8.0 mm from the block surface.
9. studs shall be mounted from the outside of the tyre.
10. studs penetrating the tread are not permitted.
11. At least one stud shall be pulled out and checked for shape and dimensions at vehicle inspection or re-inspection.

