



**RSLite – User manual for Recce**

## Contents

Welcome .....	2
Installation .....	3
Setup .....	4
Data usage.....	4
Data – SIM card.....	4
Data - Hotspot.....	5
Starting the Recce .....	6
Operation .....	7
Common questions .....	8

## Welcome

In this manual you will find all information on how to install the application RSLite on your device and how to setup and work with the application during reconnaissance.

*Please note that this application is in continues development and some images in this manual might look slightly different in your latest version of RSLite.*

## Installation

In order to install the application RSLite on your device please search for 'RSLite' in the app store, alternatively you can scan the QR code below corresponding to the operating system to go direct to the application.



*[ Google Play Store for Android ]*



*[ Apple App Store ]*

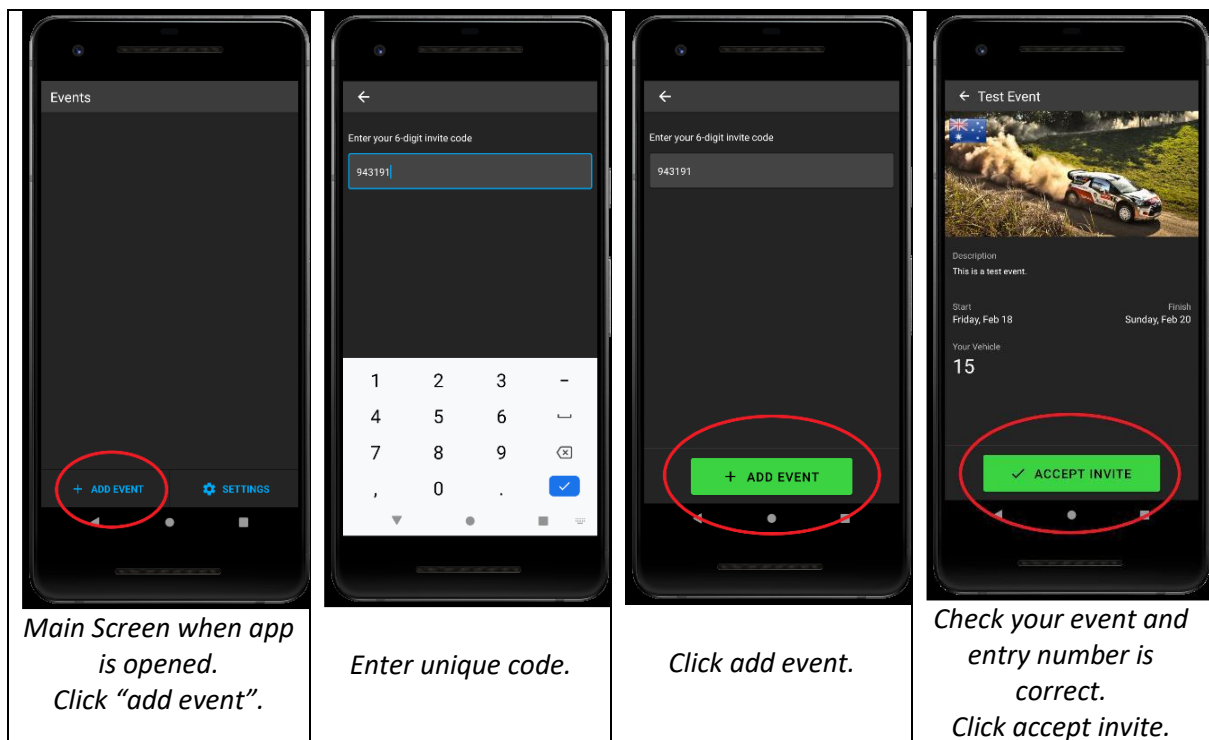
Before you arrive to the event, please make sure, if stated in the supplementary regulations of the event.

When you arrive to the event you should have the application installed on your device and bring this device to the administrative checks.

## Setup

There is no specific setup needed for the application, however your device might ask permission for using the device Location. The application needs location permissions in order to work correctly. The application will use local storage and data as well.

Once the application is installed you will see the screens below, during the administrative checks or the Recce Material Collection time, whatever is earlier in the event, you will receive the unique 6-digit code to enter. Please take the device that you want to use with you, with a data connection, so we can check and assist you entering this code.



## Data usage

The application does not need a permanent data connection, it is not a problem if the connection drops out in an area without cellular coverage. Once a data connection is lost all important information will be stored on your device and send as soon the data connection is established again. The application will use less than 10Mb per day.

There are two options to provide a data connection, either a SIM card in the device used or connect the RSLite device used with a hotspot to for example your personal phone.

## Data – SIM card

The easiest way to connect the application with data is a device with a SIM card, please make sure the device and SIM card are setup to work in 'Roaming' if you are not in your home country.

## Data - Hotspot

An alternative solution is to use a device that does not have a SIM card installed but is connected through WIFI to a device that has a Hotspot enabled. Enabling the hotspot on for example your own phone makes it possible to share the data from your personal phone to any other device over a local WIFI network.

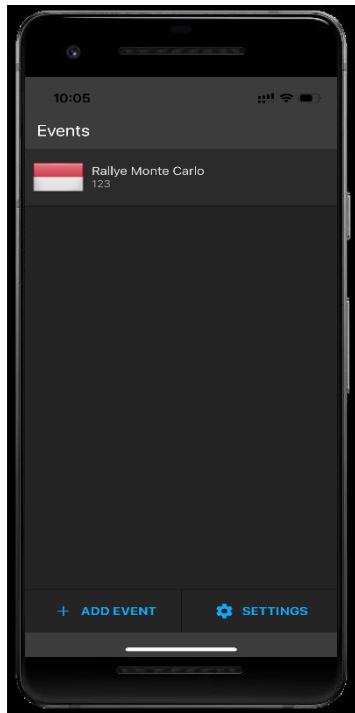
Depending on your personal device it might be slightly different to setup a hotspot but in general the following instructions would suffice.

<b><i>Android:</i></b>	<b><i>Apple:</i></b>
<p>Go to <b>Settings</b> Find <b>Network &amp; Internet</b> Click on <b>Hotspot &amp; tethering</b> Find <b>WiFi hotspot</b> Turn the hotspot on, you can find here the name of the WIFI connection and the password</p> <p>On the device you use for RSLite Search for WIFI connections Select the WIFI network of the hotspot Possibly enter the password Make sure to set the device to automatically connect.</p> <p>Now your RSLite device is connected to the internet through your personal device</p>	<p>Go to <b>Settings</b> Find <b>Cellular</b> Click on <b>Set Up Personal Hotspot</b> Turn the hotspot on, you can find here the name of the WIFI connection and the password</p> <p>On the device you use for RSLite Search for WIFI connections Select the WIFI network of the hotspot Possibly enter the password Make sure to set the device to automatically connect.</p> <p>Now your RSLite device is connected to the internet through your personal device</p>

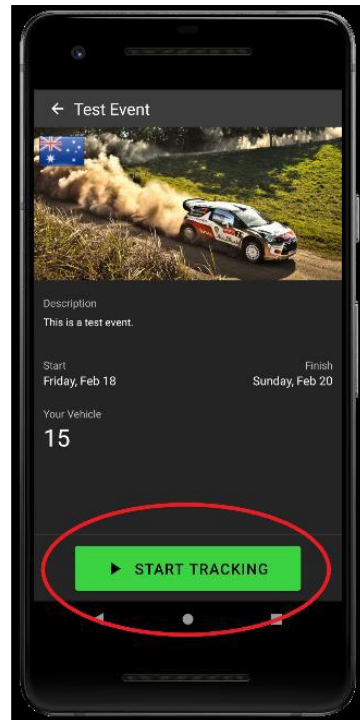
Please note that some phones will turn off hotspot mode once there has been no device connected for 5-10 minutes. Please check regular in top of the application if you still have a data connection.

## Starting the Recce

Once the application is installed on your device and the entry code is entered you can see the event in your home screen.



*Click on the event.*



*Click on 'Start Tracking'*



*Main Screen when tracking.*

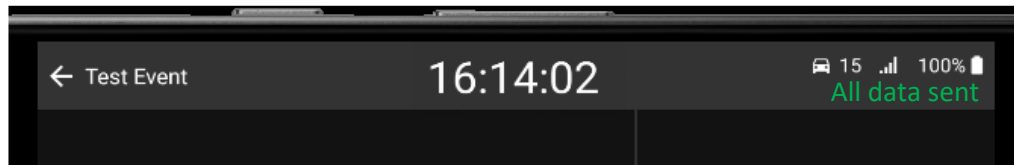
The main screen shows you the event time, the current speed and has 2 odometers that can be reset by pressing the odometer.

Please make sure your volume is turned up if you want to hear the alarm when overspeeding.

We strongly advice to keep a power source connected to the device to prevent the battery from running out.

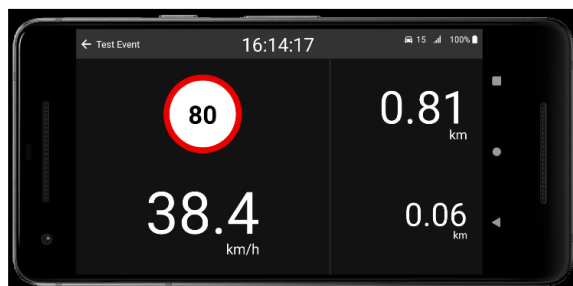
## Operation

The application will update automatically to have the latest information in your device; therefore, it is important to have an active data connection. Please check regularly that the data connection is still active using the information in the top bar as explained below.

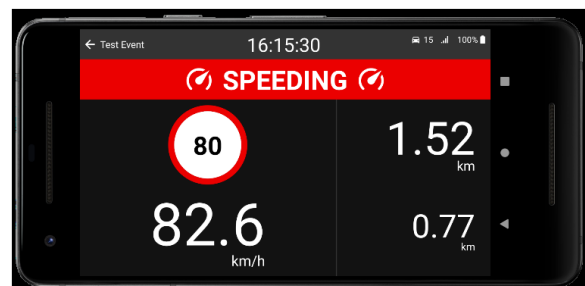


*On the top of your application, you can see the current status information. From left to right: [Back] [Event name] [Event time] [Car number] [Data connection] [Battery status]. On the right side the status of data is also shown as [All data sent] or [Waiting for server].*

There is no input needed from the competitor to use the application once setup, the device will detect by itself if it is deemed to be on a section where speed limitation applies. Once you arrive to any stage the application will show you the speed limit on stage or section and warn you when you are speeding. Please keep in mind that this application works on GPS and all stages are considered active, depending on the layout it might be possible to see unexpected speed limitations when for example you drive on a highway close to a stage or even where the stages cross a main road.



*When entering a stage, the speed limit is shown above the current speed. In this example the speed limit is set to 80km/h*



*When the device detects an overspeed this device will warn the user with an audio tone and a red bar as seen in this example.*

For the best operating experience, it is highly recommended to always keep the RSLite application open at any time, being visible for driver and/or codriver. Please do not minimize the application on stage. In transit sections the phone can be used for other purposes like texting or navigation, but the application should be visible and on as much as possible.

At the end of the day the application can be closed by pressing the [back] button. Please do not forget to turn the application on again the next day.

Important to note is that the application has logging embedded to indicate misuse. Any misuse registered, like for example GPS disabling or forcing the app off on stage will be reported to the organizer. If the app doesn't report for an extended period of time during the recce, an alert is sent to the monitoring system.

Especially when starting the day, competitors must make sure the app is active during recce.

## Common questions

Please keep in mind that this application works on GPS and all stages are considered active, depending on the layout it might be possible to see unexpected speed limitations when for example you drive on a highway close to a stage or even where the stages cross a main road.

There is a small possibility the GPS of your device does not work well in a location depending on for example steep cliffs next to the road or local radio interference. For all speeding infringements SAS will inspect all data to determine if the data is valid or if the GPS was not functioning well in a specific location.

When you see on the main screen in the top right corner “Waiting for server” for a long time please check your data connection. Feel free to close the app and re-open the app in transit as all data is stored locally and will be sent as soon as a data connection is re-established.

Please make sure your volume is turned up if you want to hear the alarm when overspeeding.

We strongly advice to keep a power source connected to the device to prevent the battery from running out.

If you have any questions during event, please contact the CRO of the event.

If you have questions before the event, please contact us on [contact@rallysafe.nl](mailto:contact@rallysafe.nl)