

ADELAIDE HILLS RALLY



MEDIA GUIDE

ROUND 6 RSEA SAFETY MOTORSPORT
AUSTRALIA RALLY CHAMPIONSHIP



RALLY.COM.AU/ADELAIDEHILLS

ASIA-PACIFIC
RALLY
CHAMPIONSHIP

RSEA
SAFETY

ARC
MOTORSPORT AUSTRALIA
RALLY CHAMPIONSHIP

CHAMPIONSHIP SPONSORS



EVENT SPONSORS



Welcome to the Adelaide Hills Rally 2022, Round 6 of the RSEA Australian Rally Championship and qualifying round of the Asia Pacific Rally Championship.

Motorsport Australia Accredited Media are welcome at this event, which will be based out of Australia's premier motorsport facility The Bend Motorsport Park at Tailem Bend.

After a 2 year hiatus due to Covid Restrictions the Adelaide Hills Rally is back with a new event. While the Council (Shire) Road stages will be familiar the range of stages being run at The Bend Motorsport Park Complex are not. The mix of surfaces and layouts should present exciting action at close range.

There is a Launch and Ceremonial start on Thursday October 20 in Murray Bridge, competition kicks off Friday afternoon with GT Plus stage at The Bend, 2 runs in the afternoon and 2 runs at night.

Saturday starts at The Bend before heading out on the council roads around the Adelaide Hills with 2 runs of the Super Special Side by Side Stage at The Bend to finish the day.

Sunday is entirely at the Bend with stages over a mix of surfaces culminating in the EROAD Power Stage.

Enjoy the rally, and please take the time to enjoy the towns with all they have to offer and the magnificent Murray River along the way.

Serving as both Australia's FIA Asia Pacific Rally Championship (APRC) Qualifier event and the penultimate round of the 2022 RSEA Safety Motorsport Australia Rally Championship (ARC) season, the event is shaping up to be the biggest on the calendar.

Taking place on 21-23 October, the Adelaide Hills Rally will see Australia's best crews tackle 180 competitive kilometres across a season-high 28 stages – two of which will run as Super Special Stages.

Spread over three days, the event will run in an endurance format and will see crews compete across both the picturesque, shire roads of the Adelaide Hills and the world-class South Australian circuit, The Bend Motorsport Park.

Beginning at The Bend on Friday night, motorsport fans will be in for quite a spectacle as teams get four passes of the circuit's GT layout both in daylight and with lights ablaze at night.

Saturday's action will feature more than half of the event's competitive distance, with seven stages to be held on shire roads before a return to The Bend at night for the event's Super Special Stages.

A perfect Saturday night for spectators, crews will compete side by side on a one and a half kilometre stage under lights.

On Sunday, the rally resumes with a further 11 stages and a competitive distance of 49 kilometres – all of which will wrap up with the EROAD Power Stage at 3:30PM ACDT

Event Sponsor and Preferred Supplier

Event Partners **AMPL Auto** was established in 2010 and provides quality automotive repairs, servicing and tuning to customers throughout Adelaide and beyond, priding itself on its workmanship, customer service and reasonable prices.

Owner, Douglas Johnson is a car enthusiast first and foremost. He completed his apprenticeship at one of Adelaide's largest car dealership service centres. He then started an award winning audio installation business before creating the southern suburbs' finest servicing, repairs and dyno tuning workshops for every type of vehicle, with a specialty in high performance cars.

To find out what we can do for your car, or to make a booking for your vehicle, get in touch with our friendly staff today!



This event will have vehicles in a number of Championships and Classes.

2022 Asia Pacific Rally Championship Qualifying Event for Australia

2022 Australian Rally Championship

2022 South Australian Rally Championship

2022 South Australian Clubman Series




2022 South Australian Regularity

SDCC Presidents Trophy

UME Stadium Sprint

This means a wide variety of cars will be entered, outright contenders in ARC & APRC will be in four wheel drive, turbo charged purpose built vehicles. Serious rally cars indeed. Within the ARC are there are multiple classes including 2WD, Production, Junior & Classic. They may not have the overall speed of the cars competing for the outright podium but they put on a great show. The skills required to drive these vehicles competitively should not be underestimated! Championships within Championships ensure that every crew will be giving their all to accrue maximum points

Itinerary Friday October 21

<div>  <div> ADELAIDE HILLS RALLY 2022   </div> </div>							
START Friday 21st October 2022 (sunrise 0624hrs sunset 1937hrs)							
TC SS	Location	SS Dist	Liaison Dist	Total Dist	Time Allowed	1st Car due	
TC0	Start					18:00	Section 1
SS1	GT Plus 1	8.18				18:03	
2			0.50	8.68	0:40	18:43	
SS2	GT Plus 2	8.18				18:46	
2A			1.00	9.18	0:12	18:58	
	Flexi Service In				0:15		
2B	Flexi Service Out / Service In						Section 2
Service A		(16.36)	(1.50)	(17.86)	0:20		
2C	Service Out/Regroup In						
2D	Regroup Out				0:15	19:48	
RZ 1	Refuel (All competitors) Distance to next refuel	(16.36)	(3.50)	(19.86)			
3			2.00	2.00	0:10	19:58	
SS3	GT Plus Night 1	8.18				20:01	
4			0.50	8.68	0:40	20:41	
SS4	GT Plus Night 2	8.18				20:44	
4A			1.00	9.18	0:12	20:56	
	Flexi Service In				0:30		
4B	Flexi Service Out / Service In						
Service B		(16.36)	(3.50)	(19.86)	0:45		
4C	Service Out/Parc Ferme In					21:41	E
Latest time to enter Parc Ferme is 2330hrs							
Totals		32.72	5.00	37.72			

Itinerary Saturday October 22

FIA

ASIA-PACIFIC

RALLY

CHAMPIONSHIP

ADELAIDE HILLS RALLY 2022

RSEA

SAFETY

ARC

MOTORSPORT AUSTRALIA

RALLY CHAMPIONSHIP

START

Saturday 22nd October 2022

(sunrise 0624hrs sunset 1937hrs)

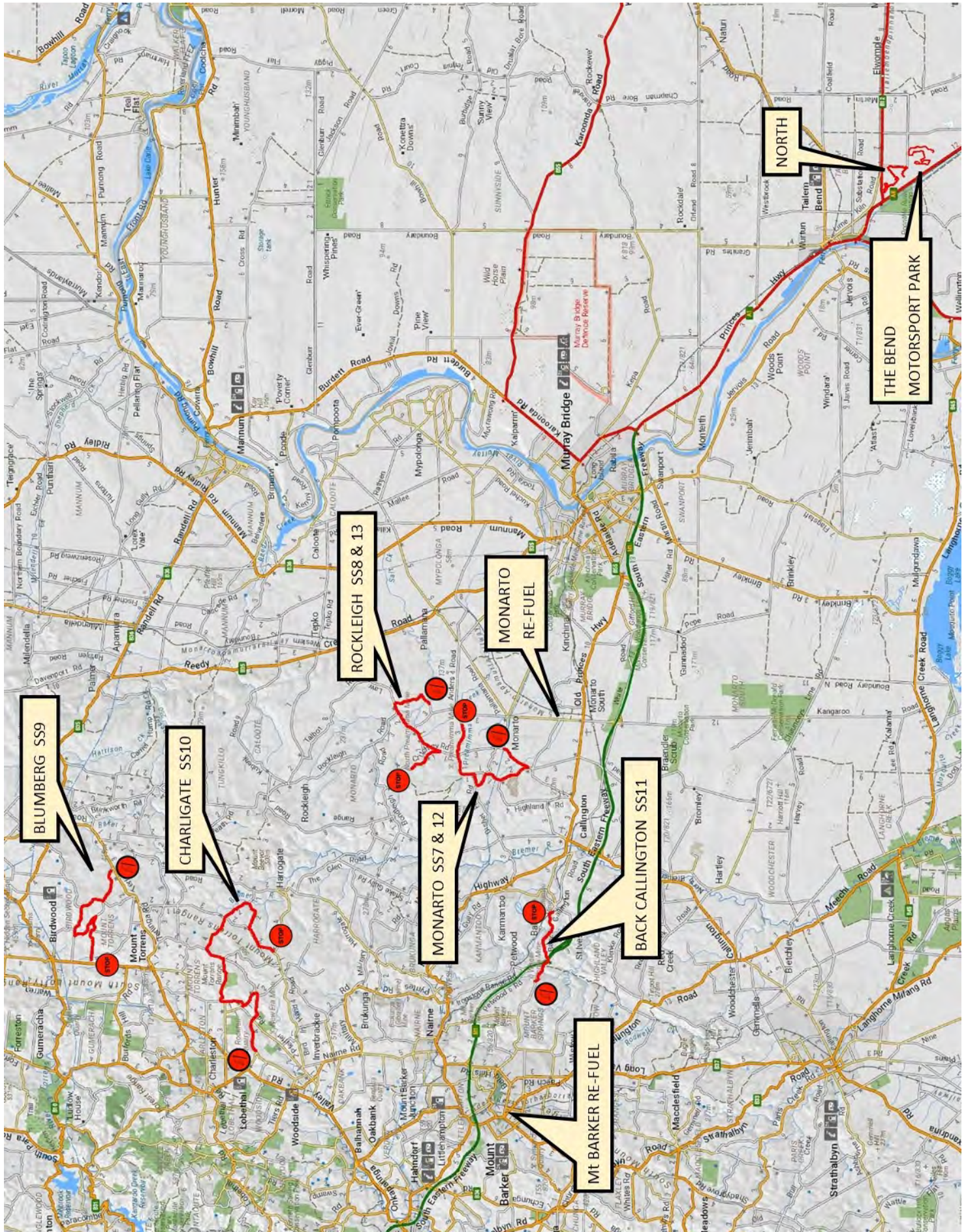
TC	Location	SS Dist	Liaison Dist	Total Dist	Time Allowed	1st Car due	
SS							
4D	Parc Ferme Out					8:00	
	Service C	(0.00)	(0.00)	(0.00)	0:20		
4E	Service Out					8:20	
RZ 2	Refuel (All competitors) Distance to next refuel	(10.68)	(57.99)	(68.67)			
5			2.00	2.00	0:10	8:30	
SS5	North 1	5.43				8:33	
6			6.19	11.62	0:15	8:48	
SS6	East 1	5.25				8:51	
6A			1.70	6.95	0:10	9:01	
	Flexi Service Holding Area				0:15		
6B	Flexi Service Out/Service In						
	Service D	10.68	9.89	20.57	0:20		
6C	Service Out/Regroup In						
6D	Regroup Out				0:15	9:51	
RZ 3	Refuel (All competitors) Distance to next refuel	(0.00)	(48.10)	(48.10)			
			48.10	48.10	0:55	10:46	
RZ 4	Remote Refuel (All competitors) Monarto Distance to next refuel	(49.02)	(82.38)	(131.40)			
	Remote Refuel (All competitors) Monarto		5.69	5.69	0:11	10:57	
SS7	Monarto 1	10.44				11:00	
8			3.62	14.06	0:15	11:15	
SS8	Rockleigh 1	9.12				11:18	
9			31.02	40.14	0:40	11:58	
SS9	Blumberg	10.38				12:01	
10			15.05	25.43	0:26	12:27	
SS10	Charlqate	19.08				12:30	
			27.00	46.08			
RZ 5	Remote Refuel & Tyre Change (All competitors) Mt Barker Distance to next refuel	(24.63)	(104.76)	(129.39)			
11			9.77	9.77	1:10	13:40	
SS11	Back Callington	5.07				13:43	
12			20.57	25.64	0:26	14:09	
SS12	Monarto 2	10.44				14:12	
13			3.62	14.06	0:15	14:27	
SS13	Rockleigh 2	9.12				14:30	
13A			70.80	79.92	1:10	15:40	
	Flexi Service Holding Area				0:15		
13B	Flexi Service Out/Sercive In						
	Service E	73.65	235.24	308.89	0:30		
13C	Service Out/Regroup In						
13D	Regroup Out				0:10	16:35	
RZ 6	Refuel (All competitors) Distance to next refuel	(10.68)	(11.89)	(22.57)			
14			2.00	2.00	0:10	16:45	
SS14	North 2	5.43				16:48	
15			6.19	11.62	0:15	17:03	
SS15	East 2	5.25				17:06	
15A			1.70	6.95	0:10	17:16	
	Flexi Service Holding Area				0:10		
15B	Flexi Service Out/Service In						
	Service F	10.68	7.89	18.57	0:20		
15C	Service Out/Regroup In						
15D	Regroup Out				0:15	18:01	
RZ 7	Refuel (All competitors) Distance to next refuel	(3.34)	(2.91)	(6.25)			
16			2.00	2.00	0:10	18:11	
SS16	Stadium SSS 1	1.67				18:14	
17			0.40	2.07	1:30	19:44	
SS17	Stadium SSS 2	1.67				19:47	
17A			0.51	2.18	0:08	19:55	
	Flexi Service Holding Area				0:30		
17B	Flexi Service Out / Service In						
	Service G	(3.34)	(2.91)	(6.25)	0:45		
17C	Parc Ferme In					20:40	
Lastest time for vehicles to enter overnight Parc Ferme is 2300hrs							
Totals		98.35	304.03	402.38			

(Version 29/09/2022)

Itinerary Sunday October 23

FIA ASIA-PACIFIC RALLY CHAMPIONSHIP		ADELAIDE HILLS RALLY 2022		RSEA SAFETY		ARC MOTORSPORT AUSTRALIA RALLY CHAMPIONSHIP	
START Sunday 23rd October 2022 (sunrise 0622hrs, sunset 1938hrs)							
TC	Location	SS Dist	Liaison Dist	Total Dist	Time Allowed	1st Car Due	
17D	Parc Ferme Out					8:30	Section 7
	Service H	(0.00)	(0.00)	(0.00)	0:20		
17E	Service Out					8:50	
RZ 6	Refuel (All competitors) Distance to next refuel	(12.35)	(9.88)	(22.23)			
18			2.00	2.00	0:14	9:04	
SS18	North 3	5.43				9:07	
19			6.19	11.62	0:20	9:27	
SS19	East 3	5.25				9:30	
19			1.18	6.43	0:12	9:42	
SS20	Stadium 1	1.67				9:45	
20A			0.51	2.18	0:06	9:51	Section 8
	Flexi Service In				0:15		
20B	Flexi Service Out / Service In						
	Service I	(12.35)	(9.88)	(22.23)	0:30		
20C	Service Out/Regroup In						
20D	Regroup Out				0:20	10:56	
RZ 8	Refuel (All competitors) Distance to next refuel	(12.35)	(9.88)	(22.23)			
21			2.00	2.00	0:14	11:10	
SS21	North 4	5.43				11:13	
22			6.19	11.62	0:20	11:33	
SS22	East 4	5.25				11:36	
23			1.18	6.43	0:12	11:48	Section 9
SS23	Stadium 2	1.67				11:51	
23A			0.51	2.18	0:06	11:57	
	Flexi Service In				0:15		
23B	Flexi Service Out / Service In						
	Service J	(12.35)	(9.88)	(22.23)	0:40		
23C	Service Out/Regroup In						
23D	Regroup Out				0:20	13:12	
RZ 9	Refuel (All competitors) Distance to next refuel	(12.35)	(9.88)	(22.23)			
24			2.00	2.00	0:14	13:26	
SS24	North 5	5.43				13:29	Section 10
25			6.19	11.62	0:20	13:49	
SS25	East 5	5.25				13:52	
25			1.18	6.43	0:12	14:04	
SS26	Stadium 3	1.67				14:07	
26A			0.51	2.18	0:06	14:13	
	Flexi Service In				0:15		
26B	Flexi Service Out / Service In						
	Service K	(12.35)	(9.88)	(22.23)	0:30		
26C	Service Out/Regroup In (Reverse Top 10 cars)						
26D	Regroup Out				0:20	15:18	
RZ 10	Refuel (All competitors) Distance to next refuel	(12.35)	(9.88)	(22.23)			Section 10
27			2.00	2.00	0:12	15:30	
SS27	North 6	5.43				15:33	
28			6.00	11.43	0:20	15:53	
SS28	Power Stage	6.30				15:56	
28A			0.30	6.60	0:12	16:08	E
	Finish	(11.73)	(9.88)	(21.61)			
	Podium					17:30	
Totals		48.78	39.52	88.30			

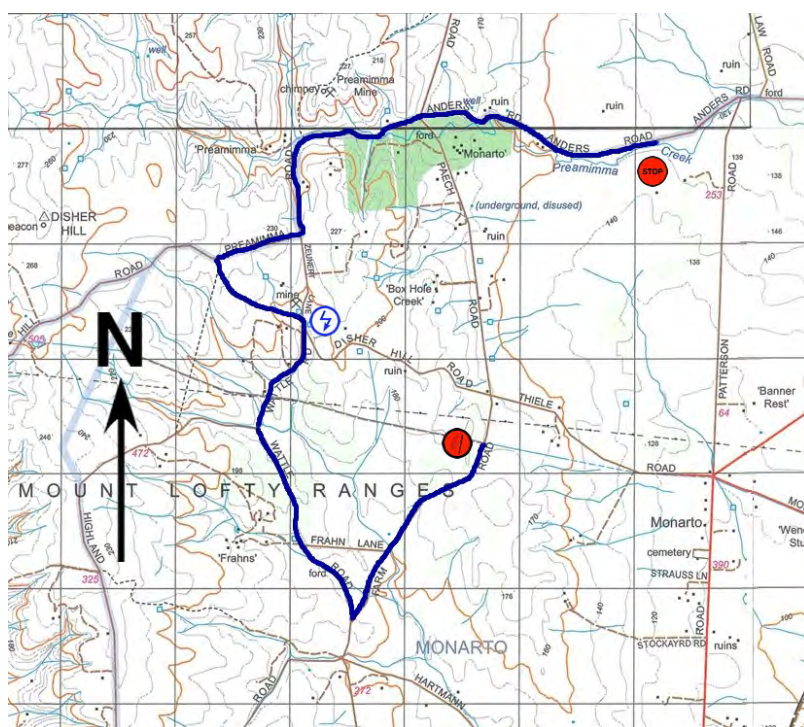
Rally Overview Map



Friday afternoon/Evening The Bend GT Plus



Saturday Council/Shire Road Stages



Monarto 1 - SS7

Monarto 2 - SS12

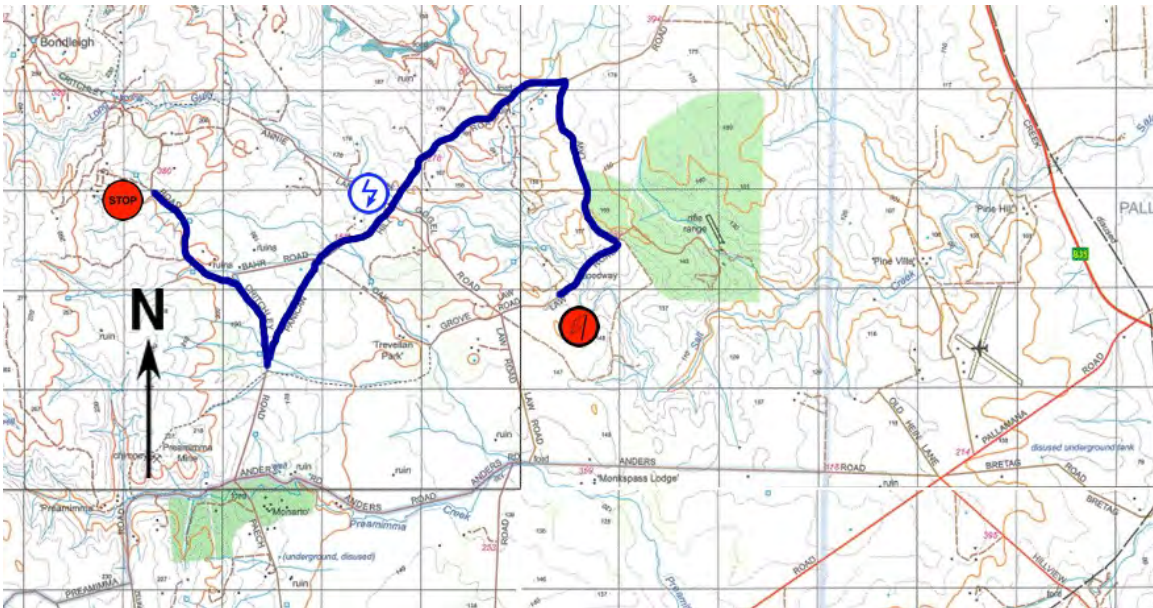
Event Sponsor and Preferred Supplier



Event Partners **Autosport** has been leading the way for over 35 years in the Motorsport supplies industry. With a range that is constantly growing and changing with technical developments, we pride ourselves in offering the largest range and choice of brands to our customers Australia wide. As racers ourselves, we stay ahead of the competition by testing and experimenting with new products, to provide our clients with the best

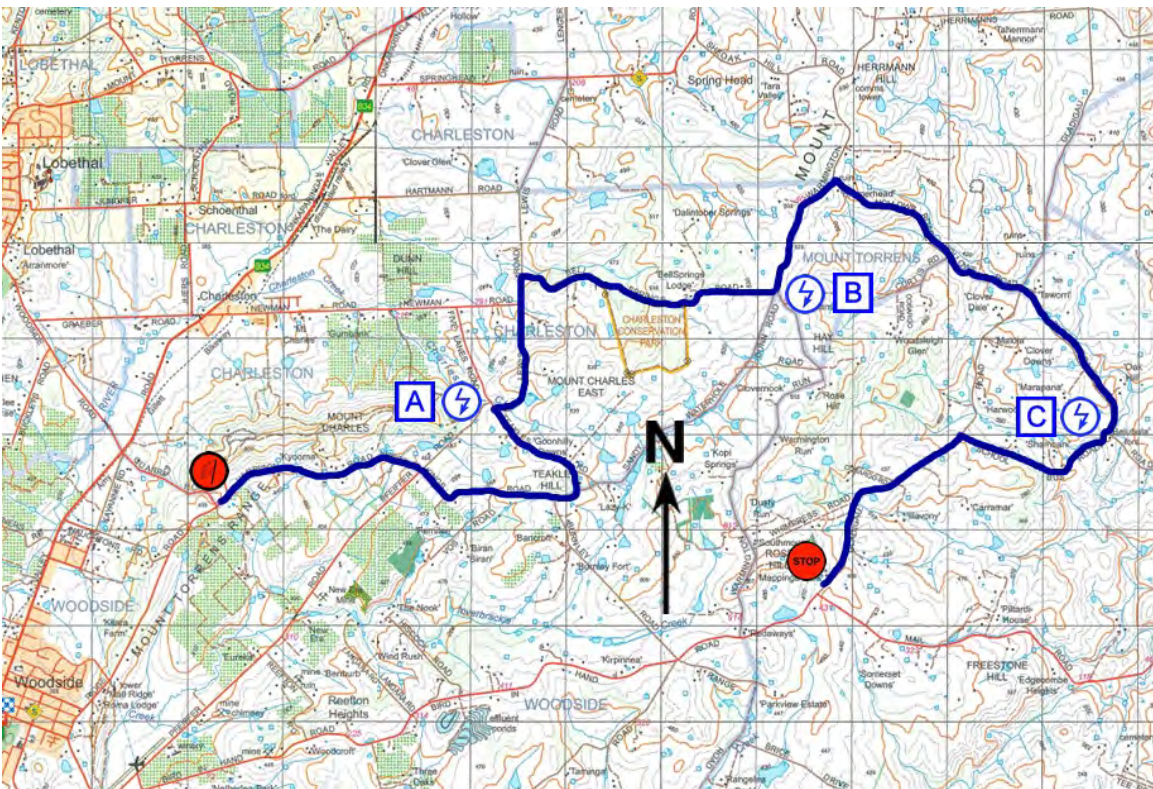
experience and advice available.

Please do not hesitate to contact one of our experienced staff members so we can assist you with your needs.



Rockleigh 1 - SS8

Rockleigh 2 - SS13



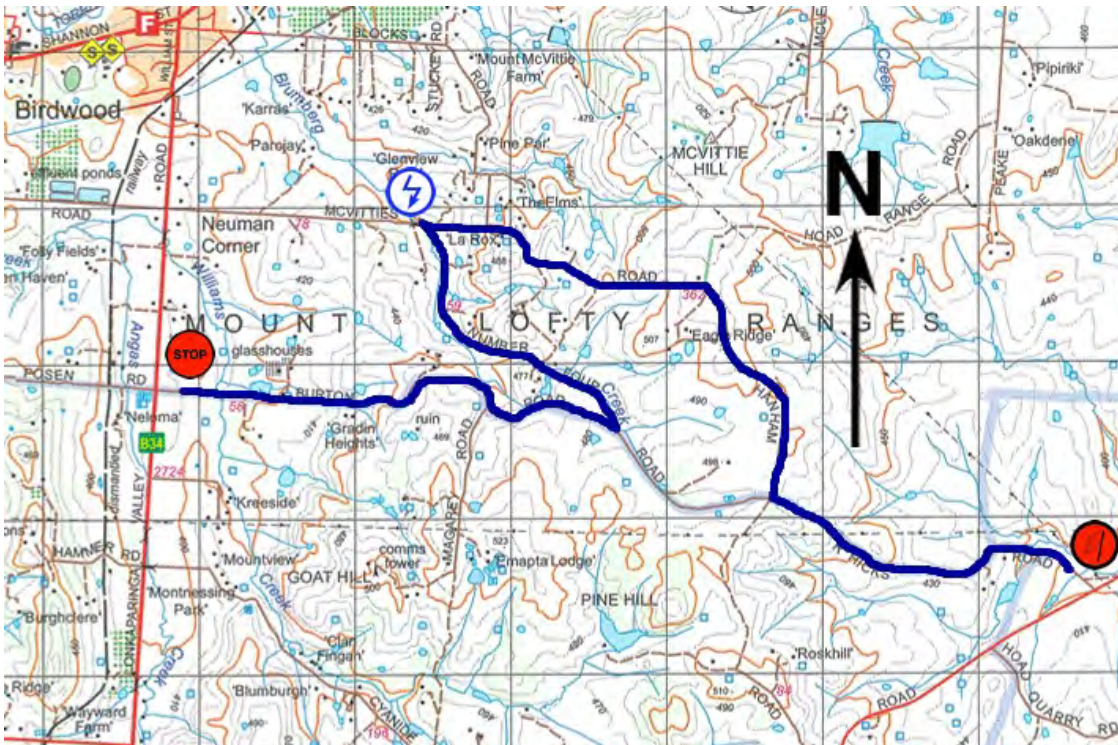
Charligate - SS10

Events Partners Copyworld was established by Managing Director Ross Almond in 1984, it has grown from its humble origins to become a national leader in the sale and service of photocopiers and network solutions.

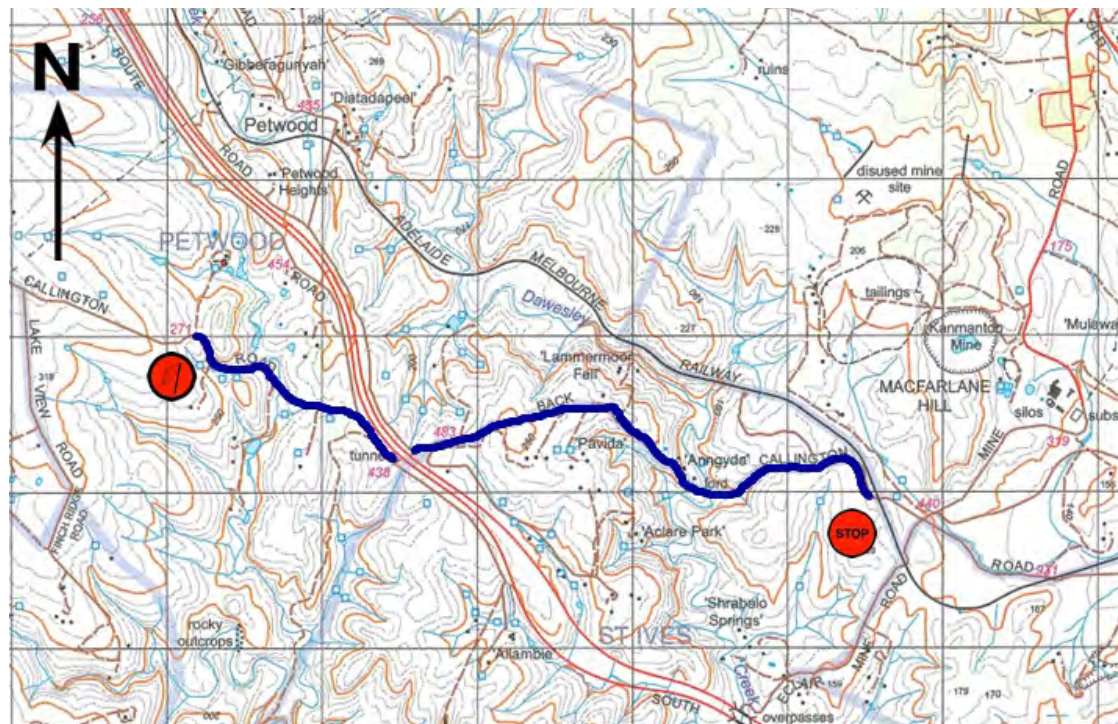
Copyworld is the exclusive dealer for Toshiba photocopiers, multi-function devices (MFD's) and facsimiles. In addition, Copyworld partners with Microsoft and other information technology companies in order to look after your entire IT network. With purpose-built offices in Adelaide and Perth, the company has over 60 dedicated employees serving the needs of customers Australia-wide.

Not only can Copyworld's professional sales team connect you with the latest technology on the market, its band of skilled technicians is able to provide fast, reliable and comprehensive support.





Blumberg - SS9



Back Callington
SS11

Events Partners - Proudly overlooking the famous Murray River, the newly re-developed **Bridgeport**



Hotel was awarded the Overall Hotel of the Year – Regional at the 2022 AHA National Awards for Excellence. The Bridgeport is a perfect location for visitors and locals to eat, drink, play & stay.

The friendly expert team presents a wide range of high-quality Murray Bridge accommodation, outstanding South Australian food & drink, vibrant live entertainment, diverse spaces for all types of functions, conferences & weddings, inviting leisure facilities ... and much more.



The Bend Motorsport Park Stages Saturday & Sunday



North stage runs Saturday morning & afternoon and 4 times on Sunday offering multiple opportunities in a variety of light conditions.

Events Partner Clemco Pty Ltd are a family owned business founded in Langhorne Creek in 1919 and has a long history of supporting motorsport events in South Australia. Clemco grows, processes, packages and sells natural, flavoured and chocolate coated almonds to businesses and the public throughout Australia. Clemco is one of the most southernmost almond orchards in Australia, meaning that with the cooler more temperate temperatures in the region, it produces some of Australia's best tasting almonds. Suppling almonds in packages from 80 grams to 25kg it caters for small to medium businesses as well as personal use. Purchases can be made by contacting sales@clemco.com.au

Meechi Road, Langhorne Creek SA 5255





The EROAD Power stage—the final stage of the rally !

Ultimate Motorsport Events was like to acknowledge the great support received from the Adelaide Hills Council, The Mid Murray Council, Mount Barker Council and The Murray Bridge Council. Without their support we would not be able to run the Adelaide Hills Rally.



Event Partners **Read Brothers** are signage & printing industry experts, we have been proudly operating here in Adelaide since 1987. We offer a huge range of manufacturing options with in house fabrication and our highly qualified team can handle any type of installation.

With decades of experience our large & highly skilled team can create signage, branding & printing solutions to suit any purpose.



www.readbros.com.au



MOTORSPORT IS DANGEROUS

All Motorsport have inherent risks and dangers. Those risks include serious injury , disability or death.

By participating in this event you acknowledge the risk involved and your rights to sue the Event Organiser, The Bend Motorsport Park or Motorsport Australia is excluded, modified or restricted.

Please refer to the <https://motorsport.org.au/events/disclaimers> for details.

Media Accreditation

We welcome Motorsport Australia Accredited media at this event .

Accreditation to be applied for at :

<https://www.rally.com.au/media/>

<https://www.thebend.com.au/media>

All Media must sign on each day.

If you are operating on-site at The Bend Motorsport Park you will have to sign both the Motorsport Australia AND The Bend Motorsport Park disclaimers.

Event Partner - Today's IT can be quite complex to manage, that where you need **asp - Application Service Provider** to take care of it for you. You have servers, data, e-mail and staff everywhere, add on to that mobile phones, tablets todays need for rapid service, the last thing you want to do is to manage your IT.

We have several software tools to help keep your IT working, and then if it isn't working we have rapid response teams to attend to it.

Now it's easier than ever to access your emails anytime, anywhere with unlimited backup and no data caps.

As we are one of few companies to achieve the Silver Small and Midmarket Cloud Solutions Competency with Microsoft due to our **asp** Office365 solution, you'll feel confident knowing your cloud IT is secure, stable and supported.



of propulsion and steering. The marine environment needs specialised products and we ensure what we supply will survive the harsh conditions encountered.

www.ceaco.com.au

Events Partner CE & A Co have been supplying quality equipment to the marine industry for 50 years. Located near Port Adelaide this family owned business is respected Australia wide for the care and service they provide. From ski - boats to submarines, fishing trawlers to Cruise ships and tugs, CE&A provide custom solutions for the specialist area



