

ADELAIDE HILLS RALLY



SERVICE GUIDE

ROUND 6 RSEA SAFETY MOTORSPORT
AUSTRALIA RALLY CHAMPIONSHIP



RALLY.COM.AU/ADELAIDEHILLS

ASIA-PACIFIC
RALLY
CHAMPIONSHIP

RSEA
SAFETY

ARC
MOTORSPORT AUSTRALIA
RALLY CHAMPIONSHIP

CHAMPIONSHIP SPONSORS



EVENT SPONSORS



General Overview

In Case of a Medical Emergency

Should you be aware of a situation within the rally that requires emergency medical attendance please ring:

RALLY HEADQUARTERS : 0409 817 363

EMERGENCY NUMBER: 0478 650 726

In case of an emergency not directly related to the rally

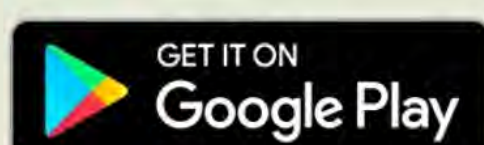
POLICE, AMBULANCE, COUNTRY FIRE SERVICE - Dial 000

COMPETITOR RELATIONS OFFICERS (CRO's)

David Baker: 0418 825 333 or Liam Bache: 0428 121 157

**For all regulations, bulletins and updated information
download the Sportity App:**

Password = ARC





Adelaide Hills Rally 2022

Service Guide



General Overview

Friday 21nd October 2022

		Competitor distance to service/refuel			
	First Car Due	Competitive Distance (km)	Liaison Distance (km)	Total Distance (km)	Time Allowed (mins)
Distance to next refuel		16.36	1.75	18.11	
Start SS 1	18.03	16.36	1.75	18.11	
Flexi Service In					15
Service A		16.36	1.50	17.86	20
Refuel - RZ 1 (All Competitors)		16.36	3.50	19.86	
Flexi Service In					30
Service B					45
Totals		32.72	5.00	37.72	



Adelaide Hills Rally 2022

Service Guide



General Overview

Saturday 22nd October 2022

		Competitor distance to service/refuel			
	First Car Due	Competitive Distance (km)	Liaison Distance (km)	Total Distance (km)	Time Allowed (mins)
Service C	08.00				20
Refuel - RZ 2 (All Competitors)		10.68	9.89	20.57	
Start SS 5	08.33				
Flexi Service					15
Service D		10.68	9.89	20.57	20
Refuel - RZ 3 (All Competitors)		0.00	48.10	48.10	
Remote Refuel - RZ 4 (Monarto)		49.02	82.38	131.40	In Transit Time
Remote Refuel & Tyre Change - RZ 5 (Mt Barker)		24.63	104.76	129.39	In Transit Time
Flexi Service					15
Service E		73.65	235.24	308.89	30
Refuel - RZ 6 (All Competitors)		10.68	11.89	22.57	
Flexi Service					10
Service F		10.68	7.89	18.57	20
Refuel - RZ 7 (All Competitors)		3.34	2.91	6.25	
Flexi Service					30
Service G		3.34	2.91	6.25	45
Totals		98.35	255.93	354.28	



Adelaide Hills Rally 2022

Service Guide

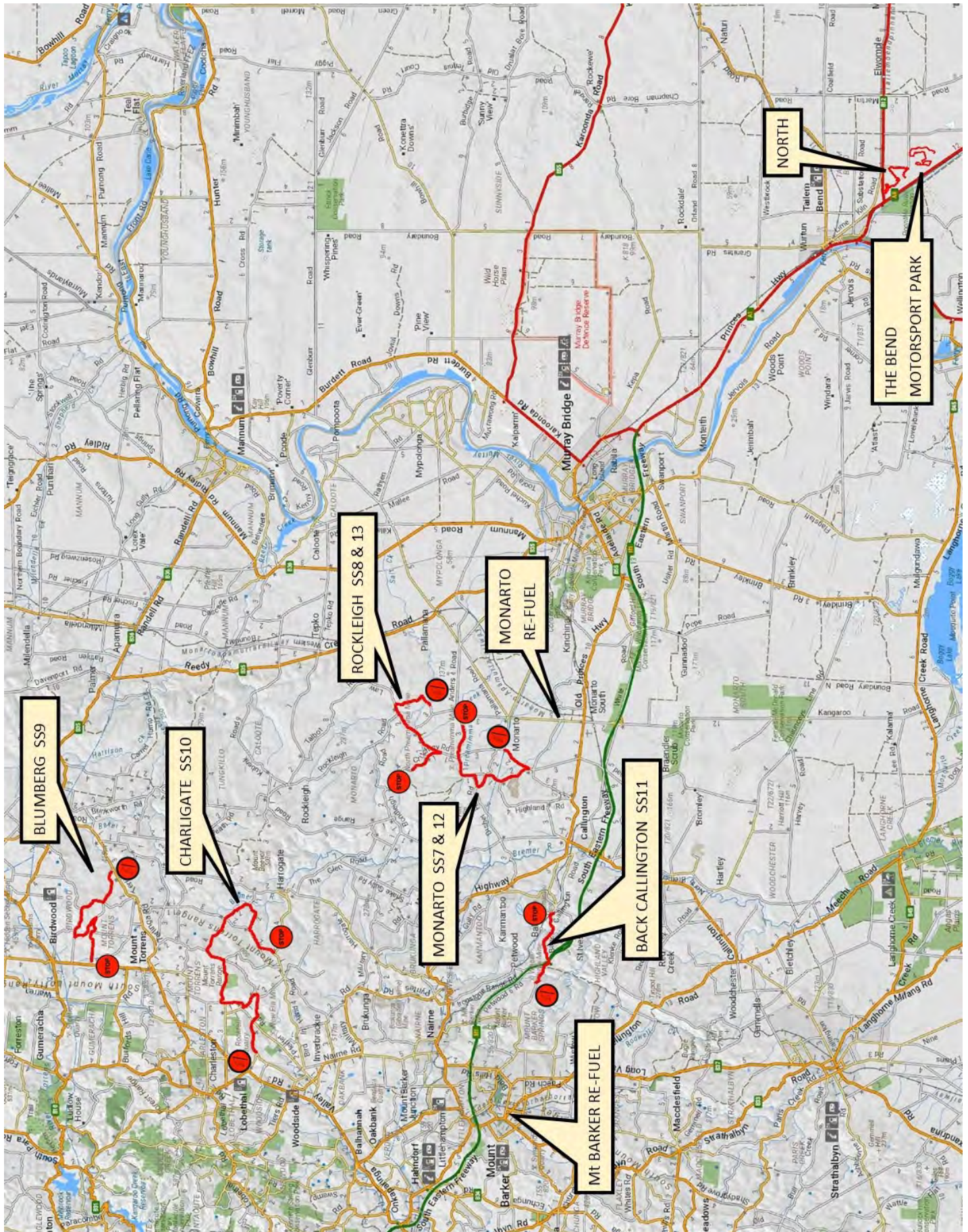


General Overview

Sunday 23rd October 2022

		Competitor distance to service/refuel			
	First Car Due	Competitive Distance (km)	Liaison Distance (km)	Total Distance (km)	Time Allowed (mins)
Service H	08.30				20
Refuel - RZ 8 (All Competitors)		12.35	9.88	22.23	
Start SS 18	09.07				
Flexi-Service In					15
Service I		12.35	9.88	22.23	30
Refuel - RZ 9 (All Competitors)		12.35	9.88	22.23	
Flexi-Service In					15
Service J		12.35	9.88	22.23	40
Refuel - RZ 10 (All Competitors)		12.35	9.88	22.23	
Flexi-Service In					15
Service K		12.35	9.88	22.23	30
Refuel - RZ 11 (All Competitors)		11.73	8.49	20.22	
Totals		48.78	38.13	86.91	

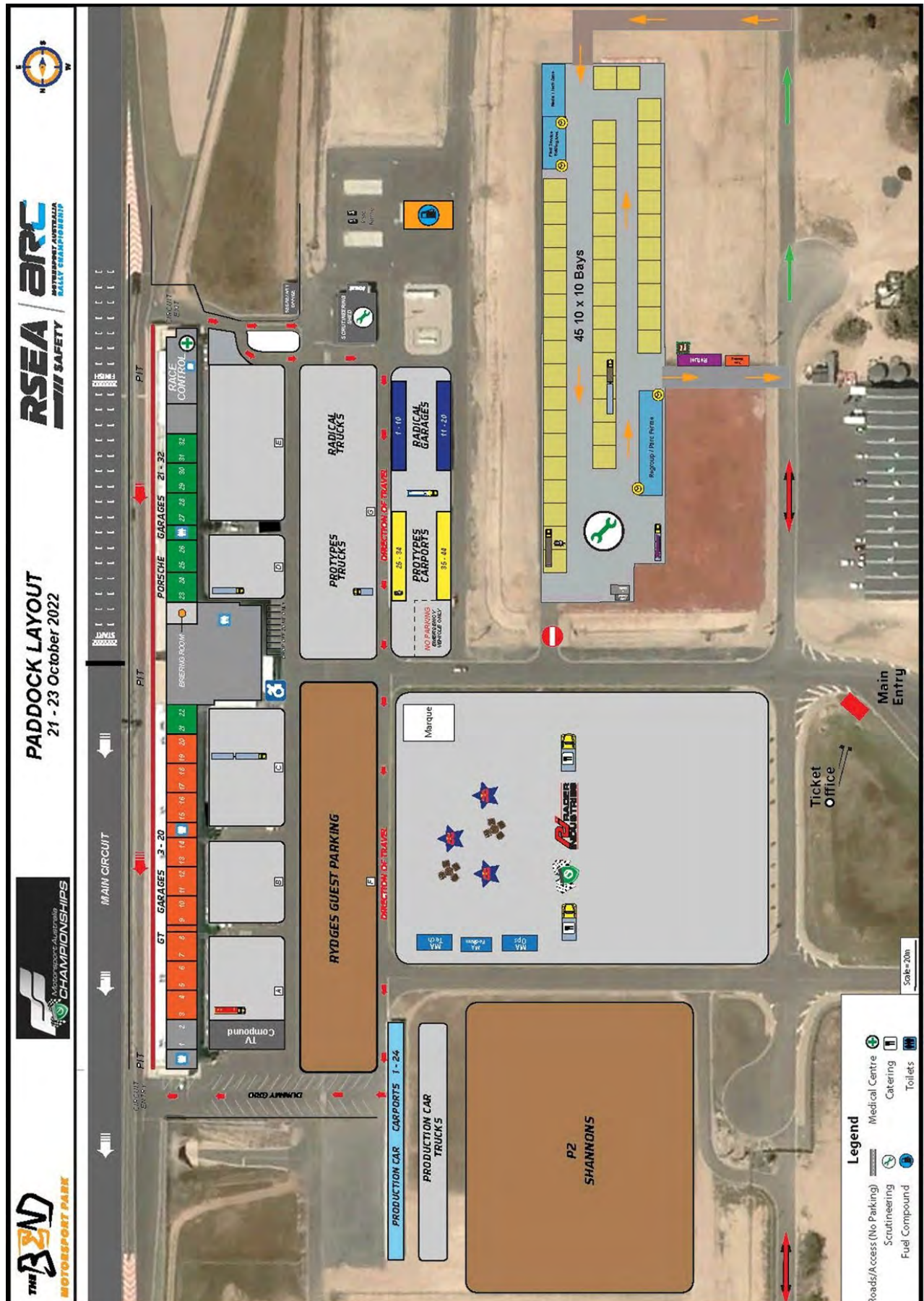
Rally Overview Map



Overview Map (Sunday)



The Bend Service Park Layout



Remote Refuel Monarto - Saturday

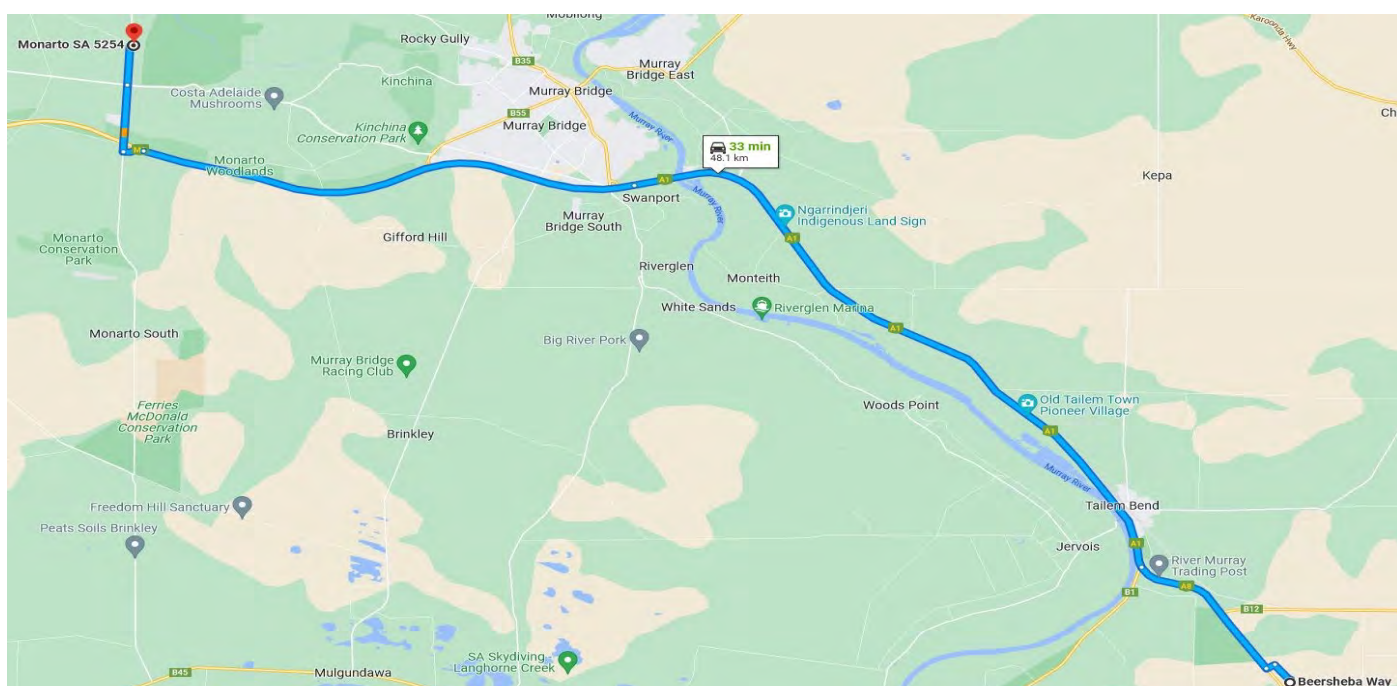
Crews travelling to the remote refuel from Service Park need to allow 45 minutes (one way) travel time.

This is a remote refuel on there is NO servicing of vehicles, one service car only.

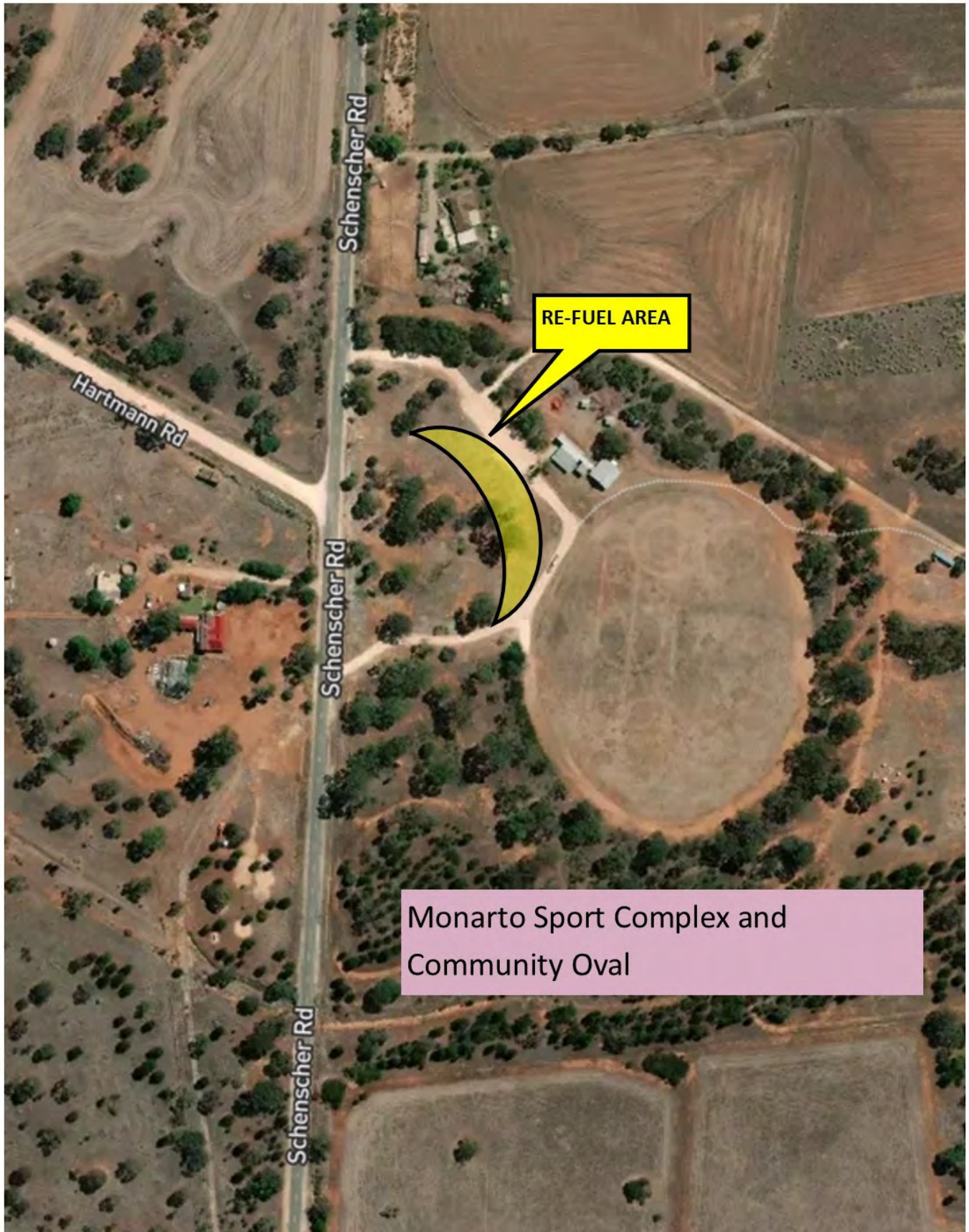
Crews are responsible for cleaning up their area.

No rubbish to be left behind.

Total Dist	Inter Dist	Instruction
0.00	0.00	Leave The Bend Motorsport park via the main entrance (by the OTR Service Station)
1.1	1.1	Turn Right onto Dukes Hwy (A8)
7.4	6.3	Continue onto A1 through Tailem Bend
27	19.6	Continue across Swanport Bridge
43.5	16.5	Take the Monarto/Mannum exit on left
44.2	0.7	Turn Right onto Ferries McDonald Road
46.6	2.4	Cross Old Princess Hwy onto Schenscher Road
48	1.4	Turn right into Monarto Sporting Complex



Overview Remote Refuel Monarto Sports Complex



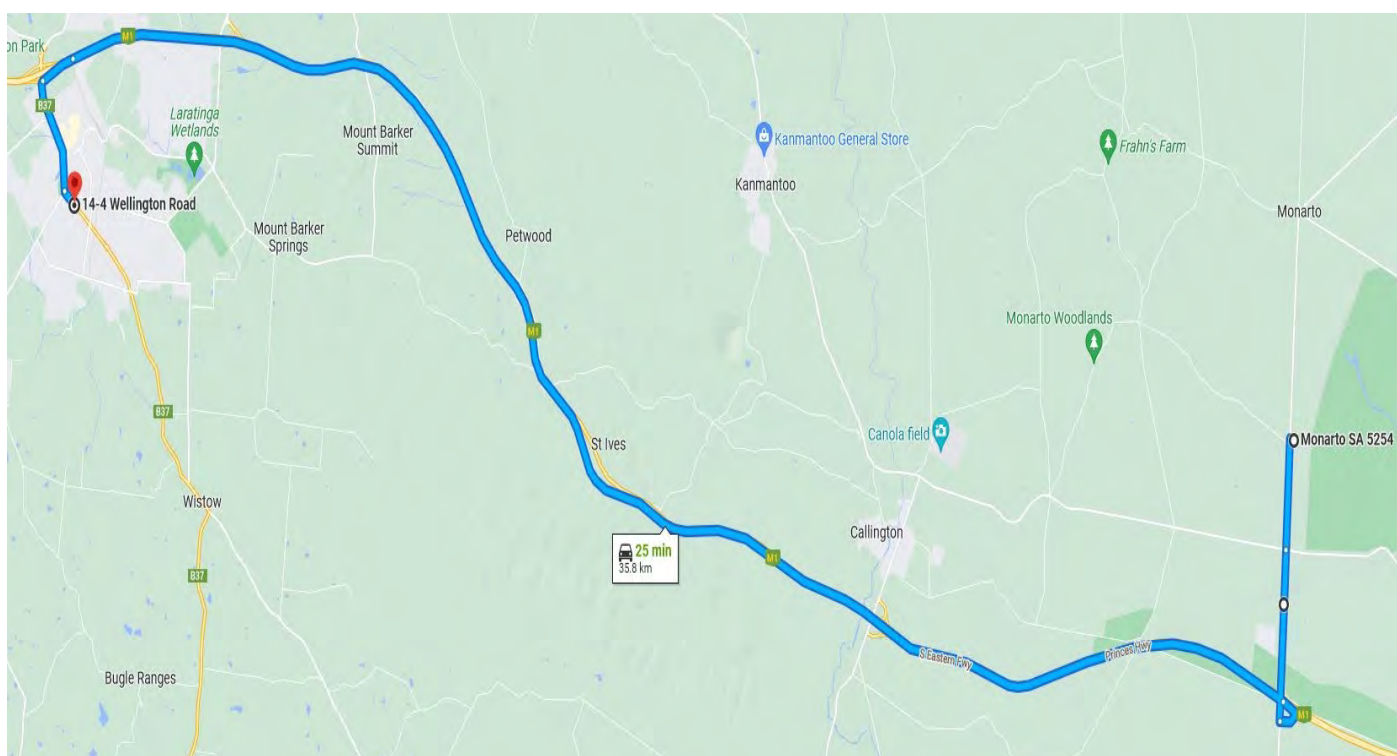
Remote Refuel & Tyre Change Mt Barker - Saturday

Crews travelling from the Monarto remote refuel to the Mt Barker refuel and tyre change need to allow 35 minutes (one way) travel time.

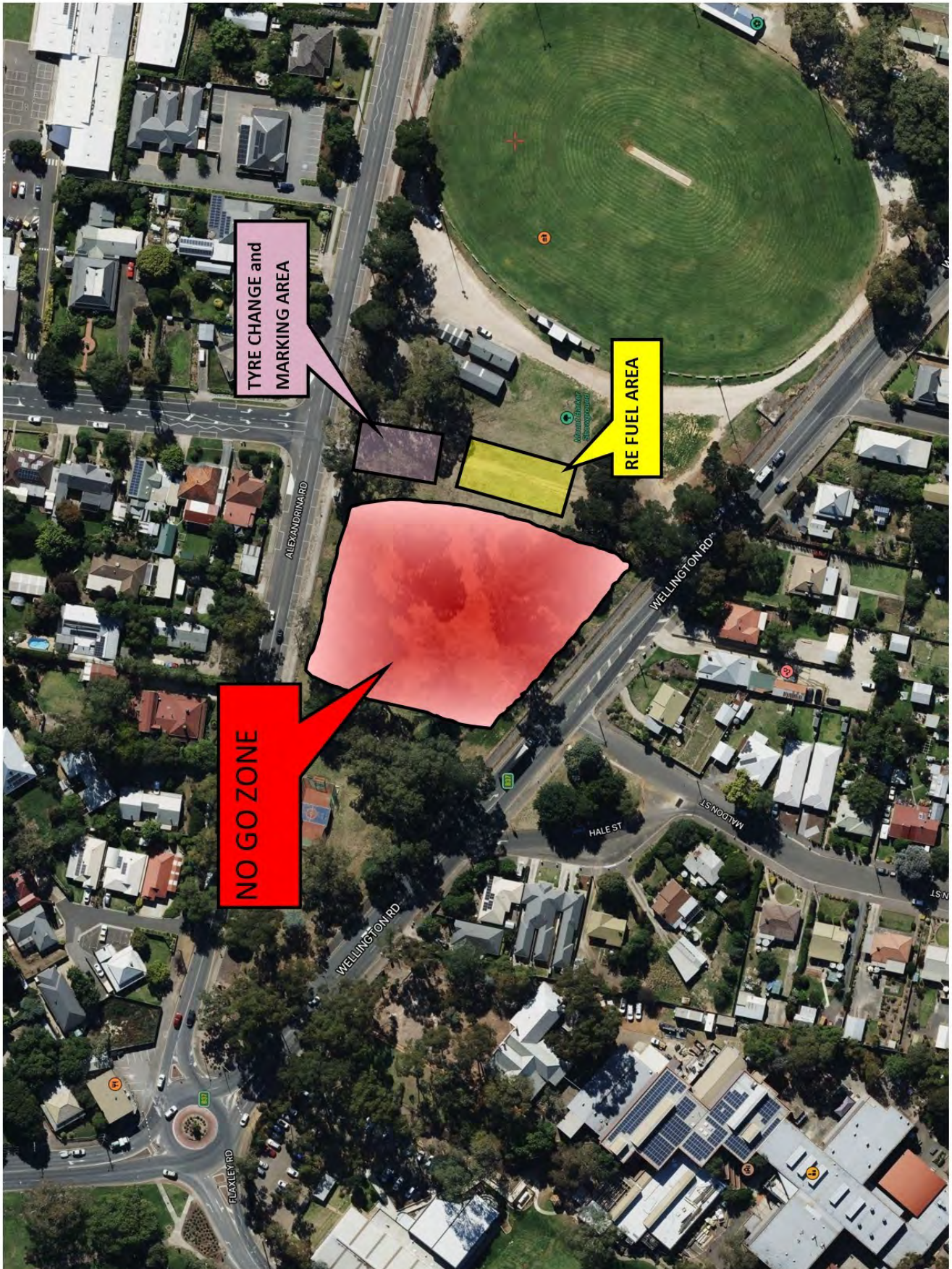
Crews are responsible for cleaning up their area.

No rubbish to be left behind.

Total Dist	Inter Dist	Instruction
0.00	0.00	Turn left exiting Monarto Sporting Complex onto Schenscher Road toward South Eastern Freeway
1.5	1.5	Cross the Old Princess Highway onto Ferries McDonald Road
3.9	2.4	Turn Left onto the South Eastern Freeway ramp to Adelaide
33.1	29.2	Take the Adelaide Rd exit B37 to Mt Barker/Hahndorf
33.8	0.7	Take slip lane Left to Mt Barker
35.0	1.2	At the roundabout, take the second exit (straight on)
35.4	0.4	At the roundabout, take the second exit onto Wellington Rd
35.7	0.3	Turn Left into Mt Barker Showgrounds



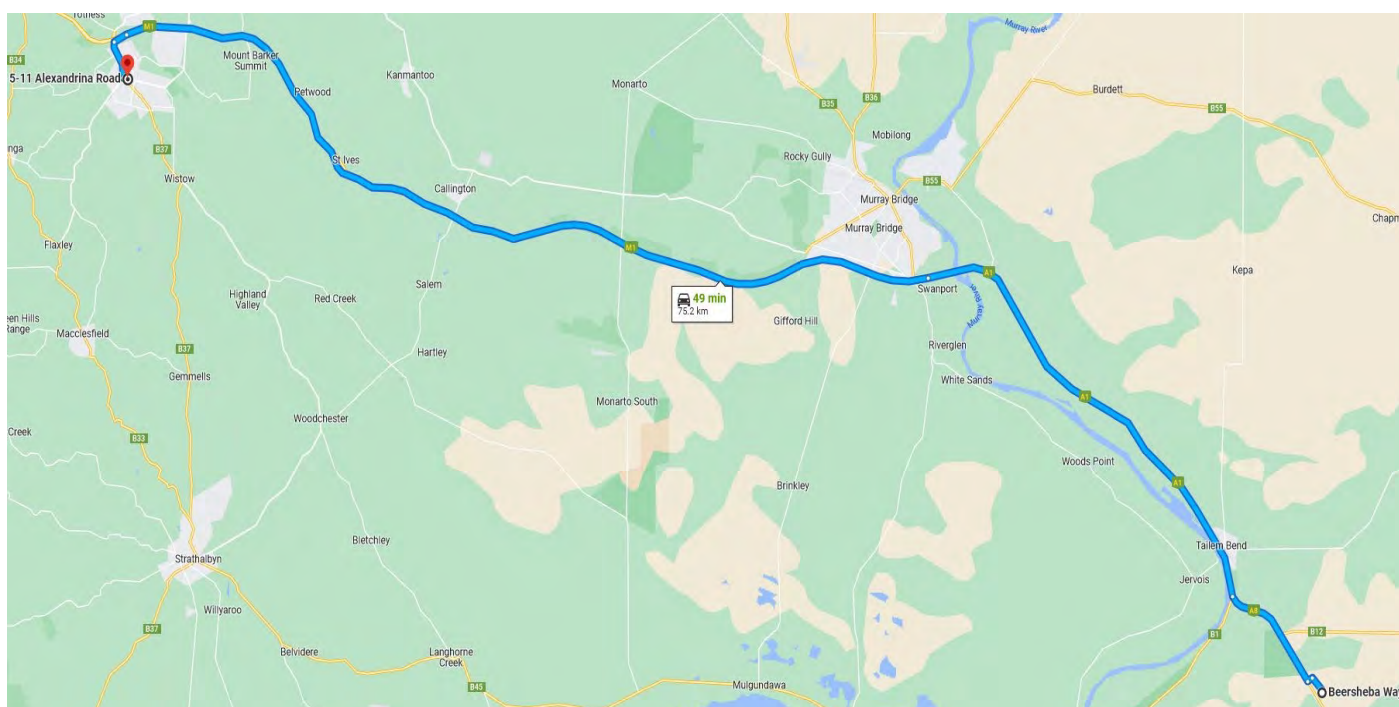
Overview Remote Refuel & Tyre Change Mt Barker



Mt Barker remote refuel to Service Park - Saturday

Crews travelling from the Mt Barker refuel and tyre change to Service Park need to allow 55 minutes (one way) travel time.

Total Dist	Inter Dist	Instruction
0.00	0.00	Turn Left out of the Mt Barker Showgrounds onto Alexandrina Road
0.23	0.23	At the roundabout, take the third exit onto Adelaide Road (B37) toward South Eastern Freeway
0.7	0.47	At the roundabout, take the first exit onto Adelaide Road (B37) toward South Eastern Freeway
2.1	1.4	Cross the bridge and turn right at the traffic lights towards Callington/Murray Bridge
2.7	0.6	Merge onto the South Eastern Freeway (M1)
64	61.3	Continue on South Eastern Freeway/Princess Highway to Taillem Bend
74.3	10.3	Turn Left into The Bend Motorsport Park
74.5	0.2	At the roundabout, take the third exit toward Service Park
75.3	0.2	Service Park



MOTORSPORT IS DANGEROUS

Motorsport Activities are inherently dangerous recreational activities and there is significant risk of injury, disability or death.

If you do not wish to be exposed to such risks, then you should not attend or participate in the Motorsport Activities.

Acknowledgement of Risks

I acknowledge that the risks associated with attending or participating in Motorsport Activities include but are not limited to the risk that I may suffer harm as a result of:

- motor vehicles (or parts of them) colliding with other motor vehicles or persons or property;
- other participants acting dangerously or with lack of skills;
- high levels of noise exposure;
- acts of violence and other harmful acts (whether intentional or inadvertent) committed by persons attending or participating in the event; and
- the failure or unsuitability of facilities (including grand-stands, fences and guard rails) to ensure my safety.

Exclusion of Liability, Release and Indemnity

In exchange for being able to attend or participate in the Motorsport Activities, I will and agree to:

- to release Motorsport Australia and the Entities to the extent that any or all of them are providing Recreational Services from all liability for:
 - my death;
 - any physical or mental injury (including the aggravation, acceleration or recurrence of such an injury;
 - the contraction, aggravation or acceleration of a disease including but not only COVID-19;
 - the coming into existence, the aggravation, acceleration or recurrence of any other condition, circumstance, occurrence, activity, form of behaviour, course of conduct or state of affairs:
 - that is or may be harmful or disadvantageous to me or the community; or
 - that may result in harm or disadvantage to me or the community,
 - any claim for any costs and expenses I may incur as a consequence of any of the above; arising from my participation in or attendance at the Motorsport Activities;
- to indemnify and hold harmless and keep indemnified Motorsport Australia and the Entities to the maximum extent permitted by law in respect of any Claim by any person; and
- to attend at or participate in the Motorsport Activities at my own risk.

Part text from Motorsports Australian Risk Warning, Disclaimer and Indemnity, for the full document visit: <https://motorsport.org.au/events/disclaimers>



Adelaide Hills Rally 2022

Service Guide



NOTES:

We would like to thank all our volunteer officials, companies and groups for their continuing support of the Adelaide Hills Rally.

Without your involvement the event would not be possible

