

# ACCENT BENCHTOPS RALLY QUEENSLAND



## SUPPLEMENTARY REGULATIONS

22-23 JULY 2023

ROUND 3 BOSCH MOTORSPORT AUSTRALIA RALLY CHAMPIONSHIP



[RALLY.COM.AU/QUEENSLAND](http://RALLY.COM.AU/QUEENSLAND)



### EVENT SPONSORS



### CHAMPIONSHIP SPONSORS



# Contents

<a href="#"><u>INTRODUCTION AND WELCOME</u></a>	- 2 -
<a href="#"><u>A MESSAGE FROM THE GYMPIE REGIONAL COUNCIL</u></a>	- 3 -
<a href="#"><u>ARTICLE 1 - EVENT PROGRAM</u></a>	- 4 -
<a href="#"><u>ARTICLE 2 - ORGANISATION</u></a>	- 5 -
<a href="#"><u>ARTICLE 3 - GENERAL INFORMATION</u></a>	- 5 -
<a href="#"><u>ARTICLE 4 – OFFICIALS OF THE RALLY</u></a>	- 6 -
<a href="#"><u>ARTICLE 5 - EVENT ELIGIBILITY</u></a>	- 7 -
<a href="#"><u>ARTICLE 6 - EVENT DESCRIPTION</u></a>	- 7 -
<a href="#"><u>ARTICLE 7 - VEHICLE ELIGIBILITY</u></a>	- 7 -
<a href="#"><u>ARTICLE 8 - COMPETITOR AND CREW ELIGIBILITY</u></a>	- 7 -
<a href="#"><u>ARTICLE 9 - SCRUTINY</u></a>	- 7 -
<a href="#"><u>ARTICLE 10 - ENTRY FORM, ENTRIES AND ENTRY FEE</u></a>	- 8 -
<a href="#"><u>REFUND POLICY</u></a>	- 8 -
<a href="#"><u>ARTICLE 11 - TESTING</u></a>	- 9 -
<a href="#"><u>ARTICLE 12 - SERVICING AND REFUELLING</u></a>	- 9 -
<a href="#"><u>ARTICLE 13 - RECONNAISSANCE</u></a>	- 9 -
<a href="#"><u>ARTICLE 14 - RUNNING OF THE RALLY</u></a>	- 9 -
<a href="#"><u>ARTICLE 15 - APPLICATION OF REGULATIONS – CONTROLS AND PARC FERMÉ</u></a>	- 10 -
<a href="#"><u>ARTICLE 16 - EMERGENCY PROCEDURES AND RED FLAGS</u></a>	- 10 -
<a href="#"><u>ARTICLE 17 - SHAKEDOWN</u></a>	- 11 -
<a href="#"><u>ARTICLE 18 - INSURANCE</u></a>	- 11 -
<a href="#"><u>ARTICLE 19 - RESULTS AND PROTESTS</u></a>	- 11 -
<a href="#"><u>ARTICLE 20 - AWARDS</u></a>	- 11 -
<a href="#"><u>ARTICLE 21 - ALCOHOL, DRUGS, AND OTHER SUBSTANCES</u></a>	- 11 -
<a href="#"><u>ARTICLE 22 - EVENT SPECIFIC REGULATIONS</u></a>	- 12 -
<a href="#"><u>APPENDIX 1 – ARC ITINERARY (DAY 1)</u></a>	- 14 -
<a href="#"><u>APPENDIX 2 – ARC ITINERARY (DAY 2)</u></a>	- 15 -
<a href="#"><u>APPENDIX 3 – QRC ITINERARY (Saturday only)</u></a>	- 16 -
<a href="#"><u>APPENDIX 4 – ALLCOMERS ITINERARY (Sunday only)</u></a>	- 17 -
<a href="#"><u>APPENDIX 5 - RECONNAISSANCE SCHEDULE</u></a>	- 18 -
<a href="#"><u>APPENDIX 6 - SCRUTINY LOCATION &amp; SCHEDULE</u></a>	- 19 -
<a href="#"><u>APPENDIX 7 – “KICKASS” RALLY VILLAGE (Draft) OVERVIEW MAP</u></a>	- 20 -

# INTRODUCTION AND WELCOME

---

Dear Rally Colleagues,

Welcome to the 2023 Accent Benchtops Rally Queensland based in Gympie, SE Qld. This year's event is once again promoted by the Brisbane Sporting Car Club, and with the incredible generosity of Glenn Brinkman, whose company, Accent Benchtops, has very kindly continued as naming rights sponsor – thankyou Glenn.

Gympie is the centre of a large provincial area in South-East Queensland, some two hours north of Brisbane, and is equipped with all the facilities and amenities to make it the ideal centre of the Queensland round of the 2023 Bosch Motorsport Australia Rally Championship and is fast becoming the Rally Hub for Qld.

The Gympie area and economy is still recovering from the flood-effects of 2022. However, through the ongoing generosity and hard work of Gympie Regional Council (who have come on board again as a major supporting partner) and HQPlantations, many of our rally roads have not just been repaired, but in some cases, upgraded.

At this point, I would also like to make mention of the many residents along the rally route for their ongoing enthusiasm and support in letting us race past their properties.

This year's Accent Benchtops Rally Qld will be a Sprint Event for ARC competitors, featuring just 216km of competitive stages. The 2023 ABRQ uses HQP forest and Shire roads to the south and west of Gympie – most of these roads were to be used in the washed-out 2022 event but have been reconfigured for 2023 to maximise competition distance and increase the sporting challenge – every stage will be different from the last and will have something for everyone - we make no excuses for that. Additionally, there will also be one totally new stage in the mix. Once again, the Gympie Showgrounds, with outstanding and unmatched facilities, will be the focal point of the event, incorporating Rally Headquarters and the "KickAss Rally Village".

Testing will be available on Thursday, along with recce for all crews. Recce will continue Friday, as will the very successful and popular "Wheels on Mary" street party which will take place on Friday evening. On Saturday, crews will have 4 stages (run twice), with Sunday having 3 stages (run twice), and which includes the picturesque "Gympie Gold" Power Stage.

The event will also incorporate a round of the 2023 KickAss Queensland Rally Championship, the Ackworth Recruitment Clubman Queensland Clubman Rally Series and Virtual Security Guard Queensland Novice Rally Series where entrants will be able to test their skills against their ARC compatriots on Saturday (Heat 1) with a non-Championship event on offer on Sunday for those who want some more sideways action.

On behalf of the Accent Benchtops Rally Qld Team, I look forward to welcoming you to Gympie.

Yours in Rally,



Brian Everitt  
Clerk of the Course / Event Manager  
2023 Accent Benchtops Rally Queensland



## A MESSAGE FROM THE GYMPIE REGIONAL COUNCIL

---

Welcome to the Gympie region!

Gympie Regional Council is excited to be supporting the Accent Benchtops Rally Queensland in 2023. Council is working hard to make our region the Rally Hub of Queensland and have overcome some challenges to ensure the roads impacted by last year's floods have been repaired and upgraded in time for this event.

As in previous years, we will open Mary Street up to the rally cars for our "Wheels on Mary" street party. This year, Wheels on Mary is expected to be bigger and better, with live entertainment, food vendors, rides for the kids, classic cars, and loads more. The rally cars lining the street are always a big hit with locals and visitors alike.

This year, the Kickass Rally Village at Gympie Showgrounds will be the place to be for enthusiasts to get a taste of the behind-the-scenes action of rally life. With food stalls, merchandise vendors and access to the rally teams, this will be a great opportunity to connect with the fans and make some new ones.

I hope you enjoy your time in the Gympie region and look forward to your return next year.

Glen Hartwig, Mayor, Gympie Regional Council



## ARTICLE 1 - EVENT PROGRAM

DATE	ITEM	LOCATION
<b>Friday</b>	<b>9th June 2023</b>	
0900hrs	Supplementary Regulations published Entries open Media Accreditation available	<i>Sportity</i> <i>Online – <a href="http://www.rally.com.au/queensland">www.rally.com.au/queensland</a></i> <i>Online – <a href="http://www.rally.com.au/queensland">www.rally.com.au/queensland</a></i>
<b>Friday</b>	<b>7th July 2023</b>	
1800hrs	Closing date for ALL entries Closing date for tyre orders	<i>Hoosier Tyres Australia</i>
<b>Monday</b>	<b>10th July 2023</b>	
	Entry list published	<i>Sportity</i>
<b>Wednesday</b>	<b>19th July 2023</b>	
1200hrs	KickAss Rally Village, Service Park & Rally HQ opens, Documentation distribution commences	<i>Gympie Showgrounds</i>
1700hrs	Rally HQ closes / Documentation concludes	<i>“The Pavilion” – Gympie Showgrounds</i>
<b>Thursday</b>	<b>20th July 2023</b>	
0630hrs	Reconnaissance commences	<i>Refer Recce Schedule</i>
0830hrs	ARC Testing commences	<i>Imbil forest</i>
0900hrs	Horse Training Track vehicular access opens,	<i>Gympie Showgrounds</i>
0900hrs	Rally HQ opens / Documentation re-commences,	<i>“The Pavilion” – Gympie Showgrounds</i>
1230hrs	ARC Testing concludes	<i>Imbil Forest</i>
1330hrs	QRC Testing commences	
1530hrs	QRC Testing concludes	
1700hrs	Reconnaissance concludes	<i>All Special Stages</i>
1800hrs	Rally HQ closes / Documentation concludes	<i>“The Pavilion” – Gympie Showgrounds</i>
<b>Friday</b>	<b>21st July 2023</b>	
0630hrs	Reconnaissance re-commences	<i>Refer Recce Schedule</i>
0900hrs	Horse Training Track vehicular access opens,	<i>Gympie Showgrounds</i>
0900hrs	Rally HQ opens / Documentation re-commences Scrutiny, turbo sealing and weighing commences RallySafe distribution commences	<i>“The Pavilion” – Gympie Showgrounds</i>
1500hrs	Reconnaissance concludes (all crews)	<i>All Special Stages</i>
1600hrs	Compulsory Crew briefing	<i>“The Pavilion”, Gympie Showgrounds</i>
1700hrs	Scrutiny, turbo sealing and weighing concludes, Documentation & RallySafe distribution concludes, Rally HQ closes	<i>As per bulletin</i> <i>Rally HQ,</i> <i>“The Pavilion”, Gympie Showgrounds</i>
1720hrs	Cars depart KickAss Rally Village for Mary Street	<i>KickAss Rally Village</i>
1730hrs-1930hrs	“Wheels on Mary” Street Party	<i>Mary St, Gympie</i>
2000hrs	Heat 1 start list published	<i>Sportity</i>
<b>Saturday</b>	<b>22nd July 2023</b>	
0600hrs	KickAss Rally Village opens	<i>Gympie Showgrounds</i>
0630hrs	Rally HQ opens	<i>“The Pavilion”, Gympie Showgrounds</i>
0700hrs	Horse Training Track vehicular access opens	<i>Gympie Showgrounds</i>
0730hrs	First ARC car starts Heat 1	<i>TC 0 - KickAss Rally Village</i>
2000hrs (est.)	First car into overnight Parc Fermé	<i>KickAss Rally Village</i>
2045hrs (est.)	QRC Podium Finish	<i>KickAss Rally Village</i>
2100hrs	Heat 2 start list published	<i>Sportity</i>
2130hrs	Rally HQ closes	<i>“The Pavilion”, Gympie Showgrounds</i>
2200hrs	Latest entry to Parc Fermé	<i>KickAss Rally Village</i>
<b>Sunday</b>	<b>23rd July 2023</b>	
0630hrs	Rally HQ opens	<i>“The Pavilion”, Gympie Showgrounds</i>
0730hrs	First ARC car starts Heat 2	<i>TC 8D - KickAss Rally Village</i>
1423hrs	End of rally (estimated first ARC car)	<i>TC 14A - KickAss Rally Village</i>
1600hrs	Podium Finish	
1630hrs	Post event scrutiny commences	<i>Gympie Motor Group</i>
	Provisional results published	<i>Sportity</i>
1800hrs	Rally HQ closes	<i>“The Pavilion”, Gympie Showgrounds</i>

## ARTICLE 2 - ORGANISATION

These Supplementary Regulations are to be read in conjunction with the ARC Sporting and Technical Regulations. The number of the Motorsport Australia Permit authorising the event is: **823/2307/01**

This Event is to be held under the FIA International Sporting Code, including Appendices, and the National Competition Rules of Motorsport Australia, including Appendices.

The following Regulations are also applicable to this event:

- 2023 Queensland Rally Championship & Series - Sporting Regulations

This event will be conducted under, and in accordance with, Motorsport Australia Policies and the Safety-First Strategy, including, but not limited to:

- Occupational Health and Safety Policy
- National Integrity Framework
- Diversity and Inclusion Policy
- Motorsport Australia Safety First Strategy

The policies and the strategy may be accessed using the following links:

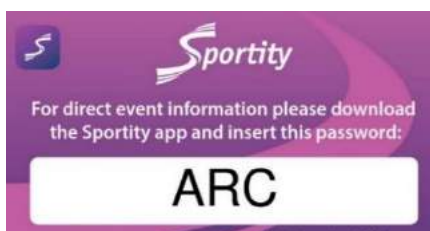
<https://motorsport.org.au/regulations/safety-integrity/policies>

<https://motorsport.org.au/regulations/safety-integrity/safety-first>

The organiser and promoter of the Accent Benchtops Rally Qld, to take place on 21 – 23 July 2023, will be the Brisbane Sporting Car Club.

## ARTICLE 3 - GENERAL INFORMATION

Rally Enquiries	Brian Everitt Event Manager <a href="mailto:blbrd@bigpond.net.au">blbrd@bigpond.net.au</a>	0439 821 786
Website	<a href="http://www.rally.com.au/queensland">www.rally.com.au/queensland</a> <a href="https://bscc.asn.au">https://bscc.asn.au</a>	
Correspondence	Gwen Bartolo PO Box 240, Imbil Qld 4570 <a href="mailto:gwenbar62@gmail.com">gwenbar62@gmail.com</a>	No responsibility will be accepted by the organisers for any correspondence sent to any other address.
Rally Headquarters	The Pavilion Conference & Reception Centre, Gympie Showgrounds, 77 Exhibition Rd, Southside, 4570	
Media Enquiries	Paul Riordan: <a href="mailto:priordan@motorsport.org.au">priordan@motorsport.org.au</a>	0498 009 803
Official Notice Board	The official notice board will be the digital notice board published on the Sportity App. This information will be also shown on the event website: <a href="http://www.rally.com.au/queensland/">www.rally.com.au/queensland/</a>	Sportity  Website



## ARTICLE 4 – OFFICIALS OF THE RALLY

Role	Name	Number
<b>Motorsport Australia</b>		
Stewards	Paul Makela (Chief) Ian Bigg Paul Henningsen Steve Ebenstelli Kevin Hunter	
Event Checker	Steven Davies	0419 495 174
ARC Manager	Adrian Coppin	0415 508 244
ARC Sporting Delegates	Alan Vaughan / Michael Wallace	0425 840 843
ARC Safety Delegate	Belinda Howard	0412 838 964
ARC Medical Delegate	Dr Rik Hagen	
ARC Technical Delegates	Barry Habgood/Ben Afford	0419 691 513
Chris Atkinson	Competition Checker	0413 704 603
SAS Results	Gary Searle	0418 815 595
ARC Chaplain	Kim van Keule	0421 211 066
<b>Event Sporting Council</b>		
Clerk of the Course/Event Manager	Brian Everitt	0439 821 786
Deputy Clerk of the Course	Malcolm Bartolo	0407 028 651
Assistant Clerk of the Course – Competition	Iain Robertson	0407 757 622
Assistant Clerk of the Course – Safety	Kevin Lefever	0422 746 926
Event Secretary	Gwen Bartolo	0409 480 199
Assistant Event Secretary	Lola McKinnon	0414 463 054
Marketing and Commercial Manager	Peter Flynn	0417 784 522
Chief Medical Officer	Dr Matthew MacPartlin	0400 543 763
Chief Marshal(s)	Iain Robertson Judy Foster	0407 757 622 0402 390 925
Critical incident Coordinator	Andrew Mutton	0425 114 891
Critical Incident Controllers	Kevin Lefever Barry Neuendorff	0422 746 926 0414 335 862
Chief Scrutineer (ARC)	Brian Whelband	0416 012 256
Deputy Chief Scrutineer (QRC)	Campbell Smith	0409 644 345
RallySafe Coordinator	Iain Robertson	0407 757 622
Results Manager	Lois Collings	0439 721 881
Competitor Relations Officer (Chief)	Sarah Bell	0437 866 887
Competitor Relations Officer	TBA	
Service Park Manager	Brian Swinton	0411 597 819
Chief Spectator Marshal	Kate Mitchell	0447 812 626
Comms Manager	Peter Millear	0403 188 611
Equipment Officer	Barry Neuendorff	0414 335 862
Gympie Regional Council – Coord. Tourism & Events	Kristi Holliss	0475 631 603

## ARTICLE 5 - EVENT ELIGIBILITY

---

As per the ARC Sporting and Technical Regulations with the addition of:

- 2023 Motorsport Australia Queensland Rally Championship & Series Sporting Regulations

## ARTICLE 6 - EVENT DESCRIPTION

---

- A) The Event will be a **SPRINT** event as defined in the ARC Sporting and Technical Regulations,
- B) The event will start on Saturday 22 July 2023 and will consist of two heats over two days consisting of 5 sections and will be approximately 608km in total, with 14 special stages totalling approximately 216km,
- C) The QLD Rally Championship and Clubman Series will be conducted on Saturday 22 July 2023 and will consist of 2 heats over 2 sections. The event will be approximately 406km in total, including 8 special stages totalling approximately 131km. The QLD Novice Series will consist of the first 4 stages of Section 1 (Saturday) totalling approximately 65km,
- D) An Allcomers event will be conducted on Sunday 23 July with approximately 193km total consisting of 5 special stages totalling approximately 80km,
- E) All special stages will be on gravel surfaces with one special stage containing approximately 200m of bitumen, and another special stage with approximately 1km of bitumen.

## ARTICLE 7 - VEHICLE ELIGIBILITY

---

- A) As per the 2023 ARC Sporting and Technical Regulations,
- B) As per 2023 Queensland Rally Championship & Series - Sporting Regulations

## ARTICLE 8 - COMPETITOR AND CREW ELIGIBILITY

---

- A) As per the ARC Sporting and Technical Regulations,
- B) All Qld crews and automobiles will be eligible for 2023 Queensland Championship points and awards:
  - 2023 Motorsport Australia KickAss Products Queensland Rally Championship
  - 2023 Motorsport Australia KickAss Queensland 2WD Rally Championship
  - 2023 Motorsport Australia KickAss Queensland Junior Rally Championship
  - 2023 Motorsport Australia Acworth Recruitment Queensland Clubman Rally Series
  - 2023 Motorsport Australia Virtual Security Guard Queensland Novice Rally Championship

**Note:** Any Driver or Co-Driver not residing in Queensland and wishing to compete in the Championship(s) listed above must comply with 2023 Motorsport Australia Queensland Rally Championship & Series Sporting Regulations: Article 3.2.2, if they wish to score points in the 2023 KickAss Queensland Rally Championship.

## ARTICLE 9 - SCRUTINY

---

### ARC Competitors

- A. Prior to starting the event, each automobile must undergo scrutiny in accordance with the requirements of the ARC Sporting and Technical Regulations (Part 2 – Technical Regulations, Article 5) and the ARC Sporting and Technical Regulations 2023 Addendum (Appendix 1 – 2023 Updates, Article 1(b)),
- B. Scrutiny, apparel checks, turbo sealing and automobile weighing for all automobiles will be held on Friday 21 July 2023 in the “Bob Henzell Dairy Pavilion”, located opposite The Pavilion, between 0900hrs and 1700hrs. A member of the service crew may present the automobile and apparel for inspection,
- C. All signage required by the ARC Sporting and Technical Regulations and these Supplementary Regulations must be in place for scrutiny, at which time, scrutineers will check the signage placement,
- D. Pre-Event Scrutiny location map is shown in **Appendix 6**. A Scrutiny Schedule will be announced by Bulletin,
- E. Post event scrutiny will be held at the Gympie Motor Group Dealership located at the corner of Bruce Highway and Oak St., Gympie. Further instructions will be advised by communication to affected teams.



### Qld State competitors

- A) Prior to starting the event, each automobile must undergo scrutiny in accordance with the requirements of the 2023 QLD Rally Championship and Series - Sporting Regulations,
- B) Pre-Event Scrutiny will be available at Lakes Hyundai, **1 Stapylton St, North Lakes QLD**, on **Sunday 16 July from 0900hrs to 1300hrs**. If unable to attend Sunday 16 July Scrutiny, you may apply to the Chief Scrutineer to have regional Scrutiny, or at the Service Park on Friday 21 July.

## ARTICLE 10 - ENTRY FORM, ENTRIES AND ENTRY FEE

- A) Entries open upon publication of these Supplementary Regulations,
- B) **ALL ARC** entries (**including QRC entries who are also entering the ARC event**) are to be made via the online entry form available from [www.rally.com.au](http://www.rally.com.au). Competitors unable to access the online entry form are to contact the Event Secretary,
- C) **ALL QLD STATE CHAMPIONSHIP & SUNDAY** entries are to be made via the online entry form available from <https://bscc.asn.au/entry-form-accent-benchtrops-rally-queensland-2/> **OR** on the Rally Queensland Event link on [www.rally.com.au/queensland/](http://www.rally.com.au/queensland/),
- D) Payment is to be made as directed on the entry form(s). Entries will only be accepted when the competitor, driver and co-driver have been nominated on the entry form and payment has been made in full,
- E) All entries **MUST** include a copy of all required documentation i.e., licences (Motorsport Australia and Civil), automobile Registration papers and Club Memberships,
- F) Entries close at 1800hrs on 7<sup>th</sup> July 2023 for all crews,
- G) The number of entries may be limited to 75. If this limit is exceeded, preference will be given to higher seeded drivers and/or those who have competed in other ARC events in 2023, and then in order of receipt of completed and paid entry forms,
- H) An Entry Fee may be paid by Electronic Funds Transfer (EFT) to the following bank:

#### National Australian Bank

Account Name: Brisbane Sporting Car Club  
Club BSB: 084-391  
Account: 50845 2534

Each entrant **MUST** include the Drivers name as a reference.

- I) The entry fees for the Event are fixed as follows:

Bosch Australian Motorsport Rally Championship	\$1800.00
KickAss Queensland State Championship (Saturday only)	\$900.00
Ackworth Recruitment Queensland Clubman Rally Series (Saturday only)	\$900.00
Virtual Security Guard Queensland Novice Rally Series (Saturday Heat 1 only)	\$500.00
Virtual Security Guard Queensland Novice Rally Series (Saturday Heat 1 Plus Heat 2)	\$900.00
Allcomers (Non-Championship event - <b>Sunday only</b> )	\$550.00

**Note:** a surcharge of 2.5% will be charged on Credit Card payments made to BSCC.

## REFUND POLICY

- a) Entries withdrawn after close of entry but prior to publication of the Seeded Entry List for the event will have their Entry Fee refunded less \$100 (Administration fee). Should the Entrant subsequently volunteer as an Official of the event this will be reduced to \$75, (or \$50 if the Entrant supplies additional Officials who also assist in the Event),
- b) Any entry withdrawn after the Seeded Entry List has been published and prior to **19<sup>th</sup> July 2023**, may be refunded up to 30% of their entry fee. For withdrawals after this date there will be **NO REFUND**,
- c) If the Event is cancelled less than 48 hours prior to the scheduled start of competition for reasons of *Force Majeure*, the Organisers may retain up to 25% of the Entry fee (*as per NCR 11*).

## ARTICLE 11 - TESTING

---

- A) Testing will be available to ARC crews on Thursday 20 July from 0830hrs until 1230hrs. The Test fee is \$500 per car. Full details of the testing locations will be emailed direct to the crews on payment of this fee,
- B) Testing will be available to Qld STATE crews on Thursday 20 July from 1330hrs until 1530hrs. The Test fee is \$250 per car. Full details of the testing locations will be emailed direct to the crews on payment of this fee.
- C) Reconnaissance of the test roads will be available 30 minutes prior to the Testing start times,
- D) Applications for test sessions can be made using the Entry form. No hard copy forms will be available.

## ARTICLE 12 - SERVICING AND REFUELLING

---

- A) As per the ARC Sporting and Technical Regulations,
- B) The Service Park (KickAss Rally Village) is situated within the Gympie Showgrounds and utilises bitumen roads surrounded by solid (grassed) ground,
- C) There is 240v power and town water available from a small number of power outlets and taps located within the Rally Village area. Power extension cords used are to display a current test certificate,
- D) The only Refuel Zone will be located within the KickAss Rally Village. All refuelling and/or decanting of fuels is to take place inside this Zone. Service crews are to comply with the apparel requirements and to follow the directions of Rally Officials,
- E) The entire KickAss Rally Village is a designated “Non-smoking” area (which includes e-cigarettes and “vaping”). Any naked flame is prohibited within 3 metres of any refuelling/decanting operations,
- F) Within the KickAss Rally Village, cars may only be washed by use of a sponge from a bucket. Where oils, solvents and degreasing fluids are used all residues must be securely contained and prevented from contacting the ground. The use of pressure cleaners is prohibited. Breaches noted by an Official of the Rally will be reported to the Stewards with a recommendation that a fine be applied.

### Flexi-Service

Refer 2022-2024 Motorsport Australia Rally Championship Sporting & Technical Regulations (Version 3.1 – Article 19.5). **NOTE:** Sub Paragraph d) will not apply.

## ARTICLE 13 - RECONNAISSANCE

---

- A) As per the ARC Sporting and Technical Regulations,
- B) Recce will be available on Thursday 20 July from 0630hrs till 1700hrs (for those crews who do not wish to partake in Testing). Recce will re-commence on Friday 21 July from 0630hrs till 1500hrs for all crews,
- C) Reconnaissance will be monitored by the RallySafe Lite (RSLITE) App, including speed and number of passes through stages,
- D) The use of the RSLITE App is mandatory for all crews doing reconnaissance, even if sharing a vehicle with another competitor,
- E) The RSLite App must be switched on during reconnaissance. Any crew found on a Special Stage without the RSLite App switched on and operating will be reported to the Stewards with a recommendation for exclusion,
- F) A reconnaissance schedule is shown in **Appendix 5**.

## ARTICLE 14 - RUNNING OF THE RALLY

---

- a) The official time for the event shall be set to Australian Eastern Standard Time,
- b) A compulsory briefing for ALL crews will be held on Friday 21 July 2023 at 1600hrs in The Pavilion - Gympie Showgrounds,
- c) The event will start from TC 0 located within the Gympie Showgrounds,
- d) The rally start (Heat 1) from TC 0 will be at 0730hrs on Saturday 22 July 2023,

- e) The starting system for the special stages will be in accordance with the ARC Sporting and Technical Regulations,
- f) Competition in a Heat will only be available to an automobile:
  - i. Having finished the previous heat; or
  - ii. Having started, but not necessarily finished, the previous Heat and being placed in the overnight Parc Fermé, as detailed in the event itinerary. Any crew wishing to re-join in the next Heat must contact the CRO prior to the scheduled publication of the start list for the next Heat.
- g) Heat 2 is scheduled to commence at 0740hrs on Sunday 23 July 2023, from TC 8D,
- h) Heat 2 for the QLD Rally Championship and Clubman Series is scheduled to commence at 1350hrs (approx.) on Saturday 22 July 2023, from TC 4D.

## ARTICLE 15 - APPLICATION OF REGULATIONS – CONTROLS AND PARC FERMÉ

---

- A. For consistency, the penalties and other sporting regulations in the ARC Sporting and Technical Regulations, applicable to time controls and Parc Fermé, shall apply to crews entered in the 2023 Accent Benchtops Rally Queensland (ARC), those entered in the 2023 Queensland State Championship, and any other associated events.
- B. Power Stage Media Activities – At the Power Stage Stop Point crews may be required to participate in media activities that will require the crew to remain in the Stop Point control area or close to it. The time that crews remain in this area will be deemed a neutralisation period. The crew will have a Stop Point official note the time of the neutralisation period on their Time Card, this time will be added to the Target Time for that Road Section.

## ARTICLE 16 - EMERGENCY PROCEDURES AND RED FLAGS

---

Crews must make themselves familiar with the emergency procedure outlined in the front of the roadbook. Failure to adhere to these requirements will be reported to the Stewards of the Meeting for consideration of disqualification or other penalty.

### A. Emergency Procedure

In the case of an accident where urgent medical or fire attention is required, where possible, the red “SOS” sign should be immediately displayed to the following cars and to any helicopter attempting to assist. The crew, if possible, should press the RallySafe SOS button. This can be done at any time following an accident, even if the OK button has been activated.

Any crew which has, the RallySafe red SOS screen displayed, the red “SOS” sign displayed to them, or which sees a car which has suffered an accident, and the OK sign is not shown, shall immediately and without exception stop to render assistance. All following cars shall also stop. The second car at the scene shall proceed to inform the next radio point. Subsequent cars shall leave a clear route for emergency vehicles and proceed as specified in Art. 21. (d). Crews affected by this procedure will be allocated a time according to Art. 21. (c) of the ARC Sporting and Technical Regulations.

### B. RallySafe Red Flag

RallySafe red flags will be used in all competing cars. When activated from rally control, the screen of the RallySafe console will turn red and show the message “RED FLAG.” Crews must immediately confirm receipt of the electronic red flag by pressing the “ACKNOWLEDGE” button and proceed as specified in Art. 21. (d) of the ARC Sporting and Technical Regulations.

### C. Meaning of a Red Flag

On passing a displayed red flag and/or receiving an electronic red flag, whichever happens first, the driver must immediately reduce speed, maintain this reduced speed until the end of the special stage, and follow the instructions of any marshals or intervention car drivers. Failure to comply with this rule will entail a penalty at the discretion of the Stewards.

### D. Interruption of a Special Stage (including Super Special Stages) – Notional Time

When a special stage is interrupted or stopped for any reason, the Clerk of the Course will allocate, to each affected crew, a time which is judged to be reasonable and fair. A corresponding notification will be published by

the Clerk of the Course, however, no crew which is solely or jointly responsible for stopping a stage may benefit from this measure.

## ARTICLE 17 - SHAKEDOWN

---

There will not be a Shakedown Stage.

## ARTICLE 18 - INSURANCE

---

- A)** Certain public, property, professional indemnity, and personal accident insurance is provided by Motorsport Australia. Further details can be found in the Motorsport Australia National Insurance Program Handbook, available at [www.motorsport.org.au](http://www.motorsport.org.au),
- B)** Service vehicles, management vehicles and reconnaissance vehicles, including those bearing special plates issued by the Organisers, are not to be considered as official participants of the rally. They are therefore not covered by the insurance policy of the rally and will remain the sole responsibility of their owner.

## ARTICLE 19 - RESULTS AND PROTESTS

---

- A)** Provisional results will be published on Sportity. These provisional results will become final 30 minutes after posting, subject to no protest being received, no issues are raised out of post event scrutiny and have been approved by the Stewards.
- B)** Protests must be lodged in accordance with the Motorsport Australia National Competition Rules.

## ARTICLE 20 - AWARDS

---

- A)** As per the ARC Sporting and Technical Regulations.
- B)** QRC Awards as per the 2023 Qld Rally Championship & Series Sporting Regulations.
- C)** The organisers reserve the right to combine trophies where crews win more than one award and add to the awards up to the start of the rally.

## ARTICLE 21 - ALCOHOL, DRUGS, AND OTHER SUBSTANCES

---

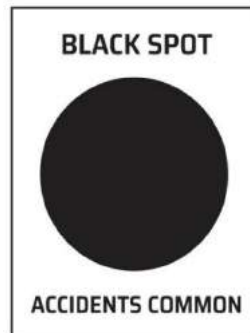
- A)** Motorsport Australia's National Integrity Framework and any associated policy (including the Australian Anti-Doping Policy, Motorsport Australia's Illicit Drugs in Sport (Safety Testing) Policy, the Motorsport Australia Alcohol Policy), apply to any activity authorised by Motorsport Australia as published at [motorsport.org.au](http://motorsport.org.au).
- B)** Any Participant including the holder of a Motorsport Australia Licence (or a Licence issued by another ASN) may be tested for the presence of alcohol, any drug or other banned substance. In addition to any penalty imposed by Motorsport Australia, a further penalty/s may be applied by Sport Integrity Australia.
- C)** Consumption of alcohol in the service park or any section of the competition venue under the control of rally officials is forbidden until all competition is concluded each day.

## ARTICLE 22 - EVENT SPECIFIC REGULATIONS

---

### Black Spots

A location on a stage which has been the subject of a prior serious crash will be identified in the Road Book, any Reconnaissance Notes and signposted on the course as a “Black Spot”. A Black Spot board (800mm high, 600mm wide) will be erected at least 100m before the hazard (see sample below):



### Gympie Showgrounds & KickAss Rally Village

As part of the Event’s Agreement to use the Gympie Showgrounds, there is a stipulation that **NO VEHICLES** are permitted to cross the horse training track at any point surrounding the KickAss Rally Village between 2am and 9am on the mornings of Thursday 20 and Friday 21 July, and between 2am and 8:00am on Saturday 22 July. Pedestrian access will be available only via a controlled pedestrian crossing between the KickAss Rally Village and the Car Park area from **6am to 9am** on Thursday and Friday, and from **6am and 8:00am** on Saturday. This is strictly for pedestrian use only. Please ensure you comply with this requirement as there will be absolutely no excuses or exemptions.

This means that any vehicles and/or equipment required for Testing prior to 9am on Thursday, 9am on Friday (for Recce and Scrutiny) and prior to 7:30am on Saturday, are to be placed in the overnight Car Park area outside the training track ring (refer KickAss Rally Village map – **Appendix 7**).

The access gates to the Showgrounds perimeter will be closed at 10pm on Thursday, Friday, Saturday and Sunday nights. They will re-open at 6am each morning.

There will be a dedicated roving Security Service in operation in the Rally Village between 6pm and 6am on Friday 21 July and Saturday 22 July.

### “Wheels on Mary” Street Party - Friday 21 July

The Gympie Regional Council are planning a public activity in Mary Street (Gympie’s main street) on Friday 21 July.

Competing cars and their crews are to make their way to the KickAss Rally Village Regroup Area where they will be placed in numerical order (beginning with car 1) to facilitate parking on arrival at the street venue. Departure from the Gympie Showgrounds will begin at 1720hrs via the Exhibition Rd exit gate for arrival into Mary Street from 1730hrs. Travel instructions will be issued by Communiqué.

Competing cars are then required to be on display at “Wheels on Mary” between 1730hrs and 1930hrs, whilst competing crews are to be in attendance in driving suits or team apparel between 1745hrs and 1915hrs.

Following the “Wheels on Mary” Street Party, all **ARC crews** are to return their rally car to the Friday Night Overnight Garage (see map next page). **Note** - there will be no vehicular access to the KickAss Rally Village Refuel Zone prior to the start on Saturday morning. ARC crews should refuel their car before entering the Friday night overnight garage. All other items required for competition (e.g., driving suits, helmets), should

also be on hand to ensure unnecessary pedestrian crossing of the horse training track. Security will be in attendance during Friday night.

QRC crews are to return their cars to the KickAss Rally Village after Wheels on Mary Street Party has concluded. Refueling will be available in the Refuel Zone for these crews on Saturday morning prior to departure from the Service Park.

For all competitors, TC 0 is located beside the “Bob Henzell Dairy Stand” opposite the Pavilion. Crews are reminded to be at TC 0 5 minutes before their allocated start time.



# APPENDIX 1 – ARC ITINERARY (DAY 1 - Saturday)



## 2023 Accent Benchtops Rally Queensland

### ARC ITINERARY (SATURDAY)

Version: (ARC) 08-06-23

Stage TC / SS	Location	SS km	Liaison km	Total km	Target Time	1st Car Due
<b>Heat 1 (Section 1 and 2) Saturday 22/07/2023 (Sunrise 06:36)</b>						
0	Gympie START					<b>7:30</b>
	Distance to next refuel	(30.74)	(54.13)	(84.87)		
1	Reid Rd		20.70	20.70	0:29	7:59
<b>SS1</b>	<b>BROOYAR WEST I</b>	<b>14.10</b>				<b>8:02</b>
2	Little Widgee Rd		14.03	28.13	0:40	8:42
<b>SS2</b>	<b>WIDGEE I</b>	<b>16.64</b>				<b>8:45</b>
<b>RZ 1</b>	Refuel - Gympie Service Park		(19.40)			
	Distance to next refuel	(34.83)	(83.51)	(118.34)		
3	Sterling Rd		58.89	75.53	1:22	10:07
<b>SS3</b>	<b>KANDANGA I</b>	<b>17.04</b>				<b>10:10</b>
4	Forest Drive		5.43	22.47	0:30	10:40
<b>SS4</b>	<b>IMBIL I</b>	<b>17.79</b>				<b>10:43</b>
4A	Flexi-Service Holding IN		38.59	56.38	0:58	11:41
4B	Flexi-Service Holding OUT / Service IN	Note: Crews have a maximum of 15 mins to move their car into service from holding area.				11:56
	<b>Service A</b>	<b>(65.57)</b>	<b>(137.64)</b>	<b>(203.21)</b>	<b>0:30</b>	
4C	Service OUT / Regroup IN					12:26
	<b>Regroup A</b>				<b>0:20</b>	
4D	Regroup OUT					12:46
<b>RZ 2</b>	Refuel - Gympie Service Park		(19.40)			
	Distance to next refuel	(30.74)	(54.13)	(84.87)		
5	Reid Rd		20.70	20.70	0:29	13:15
<b>SS5</b>	<b>BROOYAR WEST II</b>	<b>14.10</b>				<b>13:18</b>
6	Little Widgee Rd		14.03	28.13	0:40	13:58
<b>SS6</b>	<b>WIDGEE II</b>	<b>16.64</b>				<b>14:01</b>
<b>RZ 3</b>	Refuel - Gympie Service Park		(19.40)			
	Distance to next refuel	(34.83)	(83.51)	(118.34)		
7	Kandanga Ck Rd		58.89	75.53	1:22	15:23
<b>SS7</b>	<b>KANDANGA II</b>	<b>17.04</b>				<b>15:26</b>
8	Forest Drive		5.43	22.47	0:30	15:56
<b>SS8</b>	<b>IMBIL II</b>	<b>17.79</b>				<b>15:59</b>
8A	Flexi-Service Holding IN		38.59	56.38	0:58	16:57
8B	Flexi-Service Holding OUT / Service IN	Note: Crews have a maximum of 45 mins to move their car into service from holding area.				17:42
	<b>Service B</b>	<b>(65.57)</b>	<b>(137.64)</b>	<b>(203.21)</b>	<b>2:00</b>	
8C	Service OUT / Parc Ferme IN					19:42
	<b>HEAT 1 Totals</b>	<b>131.14</b>	<b>275.28</b>	<b>406.42</b>	<b>(Sunset 17:15)</b>	<b>E</b>

NOTE 1: TC8C is approved for early check in

All cars re-starting in Heat 2 must be returned to Parc Fermé no later than 2200hrs

# APPENDIX 2 – ARC ITINERARY (DAY 2 - Sunday)



## 2023 Accent Benchtops Rally Queensland

### ARC ITINERARY (SUNDAY)

Version: (ARC) 08-06-23

Heat 2 (Section 3, 4 and 5)						Sunday 23/07/2023 (Sunrise 06:36)		
8D	Parc Ferme <b>OUT</b> / Service <b>IN</b>					7:40		
<b>Service C</b>					0:20			
8E	Service <b>OUT</b>					8:00		
<b>RZ 4</b>	Refuel - Gympie Service Park							
	Distance to next refuel	(42.67)	(58.26)	(100.93)				
9	Reid Rd		20.70	20.70	0:29	8:29		
<b>SS9</b>	<b>BROOYAR EAST I</b>	17.45				8:32		
10	SF 242		6.00	23.45	0:33	9:05		
<b>SS10</b>	<b>GLASTONBURY I</b>	20.61				9:08		
11	Golden Hills Rd		13.75	34.36	0:46	9:54		
<b>SS11</b>	<b>GYMPIE GOLD I</b>	4.61				9:57		
11A	Flexi-Service Holding <b>IN</b>							
11B	Flexi-Service Holding <b>OUT</b> / Service <b>IN</b>					10:40		
<small>Note: Crews have a maximum of 15 mins to move their car into service from holding area.</small>								
<b>Service D</b>					(42.67)	(58.26)	(100.93)	0:30
<b>RZ 5</b>	Refuel - Gympie Service Park							
	Distance to next refuel	(42.67)	(58.18)	(100.85)				
11C	Service <b>OUT</b> / Regroup <b>IN</b>					11:10		
<b>Regroup B</b>					0:20			
11D	Regroup <b>OUT</b>					11:30		
12	Reid Rd		20.70	20.70	0:29	11:59		
<b>SS12</b>	<b>BROOYAR EAST II</b>	17.45				12:02		
13	SF 242		6.00	23.45	0:33	12:35		
<b>SS13</b>	<b>GLASTONBURY II</b>	20.61				12:38		
13A	Power Stage Regroup <b>IN</b>					13:16		
<b>Regroup C (Widgee)</b>					0:38			
13B	Power Stage Regroup <b>OUT</b>					13:54		
14	Golden Hills Rd		7.52	7.52	0:08	14:02		
<b>SS14</b>	<b>GYMPIE GOLD II (POWER STAGE - ARC ONLY)</b>	4.61				14:05		
14A	End of Event - Parc Ferme <b>IN</b>					14:33		
					(42.67)	(58.18)	(100.85)	
<b>HEAT 2 Totals</b>		85.34	116.44	201.78				
<b>NOTE 1:</b> TC 14A is approved for early check in								
<b>Totals of the Rally</b>		<b>SS</b>	<b>Liaison</b>	<b>Total</b>	<b>%</b>			
Saturday, 22 July (Heat 1) Sections 1 & 2		131.14	275.28	406.42	32%			
Sunday, 23 July (Heat 2) Sections 3, 4 & 5		85.34	116.44	201.78	42%			
<b>Totals (14 SS)</b>		<b>216.48</b>	<b>391.72</b>	<b>608.20</b>	<b>36%</b>			


Section 3

Section 4

Section 5




# APPENDIX 3 – QRC/NOVICE ITINERARY (Saturday only)

 <b>2023 Accent Benchtops Rally Queensland</b> <b>QRC / NOVICE ITINERARY</b> <span style="float: right;">Version: 08-06-23</span>							
Stage TC / SS	Location	SS km	Liaison km	Total km	Target Time	1st Car Due	
<b>Heat 1</b> <span style="float: right;">Saturday 22/07/2023 (Sunrise 06:36)</span>							
0	START				Estimated:	<b>8:34</b>	
	Distance to next refuel	(30.74)	(54.13)	(84.87)			
1	Reid Rd		20.70	<b>20.70</b>	<b>0:29</b>	9:03	
<b>SS1</b>	<b>BROOYAR WEST I</b>	<b>14.10</b>				<b>9:06</b>	
2	Little Widgee Rd		14.03	<b>28.13</b>	<b>0:40</b>	9:46	
<b>SS2</b>	<b>WIDGEE I</b>	<b>16.64</b>				<b>9:49</b>	
<b>RZ 1</b>	Refuel - Gymie Service Park		(19.40)				
	Distance to next refuel	(34.83)	(83.51)	(118.34)			
3	Sterling Rd		58.89	<b>75.53</b>	<b>1:22</b>	11:11	
<b>SS3</b>	<b>KANDANGA I</b>	<b>17.04</b>				<b>11:14</b>	
4	Forest Drive		5.43	<b>22.47</b>	<b>0:30</b>	11:44	
<b>SS4</b>	<b>IMBIL I</b>	<b>17.79</b>				<b>11:47</b>	
4A	Flexi-Service Holding IN		38.59	<b>56.38</b>	<b>0:58</b>	12:45	
<b>Finish of Novice Series Rally</b>							
4B	Flexi-Service Holding OUT / Service IN	<b>Note: Crews have a maximum of 15 mins to move their car into service from holding area.</b>					13:00
	<b>Service A</b>	<b>(65.57)</b>	<b>(137.64)</b>	<b>(203.21)</b>	<b>0:30</b>		
4C	Service OUT / Regroup IN					13:30	
	<b>Regroup A</b>				<b>0:20</b>		
<b>Heat 2</b>							
4D	Regroup OUT					13:50	
<b>RZ 2</b>	Refuel - Gympie Service Park		(19.40)				
	Distance to next refuel	(30.74)	(54.13)	(84.87)			
5	Reid Rd		20.70	<b>20.70</b>	<b>0:29</b>	14:19	
<b>SS5</b>	<b>BROOYAR WEST II</b>	<b>14.10</b>				<b>14:22</b>	
6	Little Widgee Rd		14.03	<b>28.13</b>	<b>0:40</b>	15:02	
<b>SS6</b>	<b>WIDGEE II</b>	<b>16.64</b>				<b>15:05</b>	
	Light-fitting Zone - Gympie Service Park						
<b>RZ 3</b>	Refuel - Gympie Service Park		(19.40)				
	Distance to next refuel	(34.83)	(83.51)	(118.34)			
7	Kandanga Ck Rd		58.89	<b>75.53</b>	<b>1:36</b>	16:41	
<b>SS7</b>	<b>KANDANGA II</b>	<b>17.04</b>				<b>16:44</b>	
8	Forest Drive		5.43	<b>22.47</b>	<b>0:30</b>	17:14	
<b>SS8</b>	<b>IMBIL II</b>	<b>17.79</b>				<b>17:17</b>	
8A	Service IN		38.59	<b>56.38</b>	<b>0:58</b>	18:15	
	<b>Parc Ferme IN</b>	<b>(65.57)</b>	<b>(137.64)</b>	<b>(203.21)</b>			
<b>Finish of QRC Rally</b>							
<b>Saturday QRC &amp; Novice (Heat 1 &amp; 2) Sections 1 &amp; 2</b>		<b>131.14</b>	<b>275.28</b>	<b>406.42</b>	<b>(Sunset 17:15)</b>		
<b>NOTE 1:</b> TC4A Crews competing in NOVICE ONLY finish here <b>NOTE 2:</b> TC8A (Service IN) is approved for early check in - QRC <b>NOTE 3:</b> After TC8A, QRC crews are required to proceed to Parc Ferme							

SECTION 1

SECTION 2

# APPENDIX 4 – ALLCOMERS ITINERARY (Sunday only)

 <b>2023 Accent Benchtops Rally Queensland</b> <b>ALLCOMERS ITINERARY</b> <span style="float: right;">Version: 08-06-23</span>						
Stage TC / SS	Location	SS km	Liaison km	Total km	Target Time	1st Car Due
<b>Heat 2 (Section 3 and 4) Sunday 23/07/2023 (Sunrise 06:36)</b>						
8E	Service OUT				Estimated:	<b>8:54</b>
<b>RZ 4</b>	Refuel - Gympie Service Park					
	Distance to next refuel	(42.67)	(58.26)	(100.93)		
9	Reid Rd		20.70	20.70	0:29	9:23
<b>SS9</b>	<b>BROOYAR EAST I</b>	17.45				9:26
10	SF 242		6.00	23.45	0:33	9:59
<b>SS10</b>	<b>GLASTONBURY I</b>	20.61				10:02
11	Golden Hills Rd		13.75	34.36	0:46	10:48
<b>SS12</b>	<b>GYMPIE GOLD I</b>	4.61				10:51
11A	Flexi-Service Holding IN		17.81	22.42	0:28	11:19
11B	Flexi-Service Holding OUT / Service IN	<b>Note:</b> Crews have a maximum of 15 mins to move their car into service from holding area.			0:15	11:34
	<b>Service C</b>	<b>(42.67)</b>	<b>(58.26)</b>	<b>(100.93)</b>	<b>0:30</b>	
11C	Service OUT / Regroup IN					12:04
	<b>Regroup B</b>				<b>0:20</b>	
11D	Regroup OUT					12:24
<b>RZ 5</b>	Refuel - Gympie Service Park					
	Distance to next refuel	(38.06)	(54.70)	(92.76)		
12	Reid Rd		20.70	20.70	0:29	12:53
<b>SS12</b>	<b>BROOYAR EAST II</b>	17.45				12:56
13	SF 242		6.00	23.45	0:33	13:29
<b>SS13</b>	<b>GLASTONBURY II</b>	20.61				13:32
13Q	End of Event - Parc Ferme IN		28.00	48.61	0:55	14:27 <b>E</b>
		<b>(38.06)</b>	<b>(54.70)</b>	<b>(92.76)</b>		
	<b>Sunday (Allcomers) Sections 3 &amp; 4</b>	<b>80.73</b>	<b>112.96</b>	<b>193.69</b>		
<b>NOTE 1:</b> TC 135Q is approved for early check in						
<b>Totals of the Rally</b>		<b>SS</b>	<b>Liaison</b>	<b>Total</b>	<b>%</b>	
<b>Sunday, 23 July, 5 SS (Sections 3 &amp; 4)</b>		80.73	112.96	193.69	42%	
<b>Totals</b>		<b>80.73</b>	<b>112.96</b>	<b>193.69</b>	<b>42%</b>	

SECTION 3

SECTION 4

## APPENDIX 5 - RECONNAISSANCE SCHEDULE

Thursday 20 July 2023

STAGE NAME	ARC		QRC	
	OPEN	CLOSE	OPEN	CLOSE
Brooyar West	X	X	0700hrs	1700hrs
Widgee	X	X	0700hrs	<b>1230hrs</b>
Kandanga	0630hrs	1700hrs	0700hrs	1700hrs
Imbil	0630hrs	1700hrs	0700hrs	1700hrs
Brooyar East	X	X		
Glastonbury	1430hrs	1700hrs		
Gympie Gold	X	X		

NOTES:

1. NO QRC crew is to enter the Widgee Special Stage after **1230hrs** under any circumstances.
2. Any crew found on a Special Stage without the RSLite App switched on and operating will be reported to the Stewards with a recommendation for exclusion.

Friday 21 July 2023

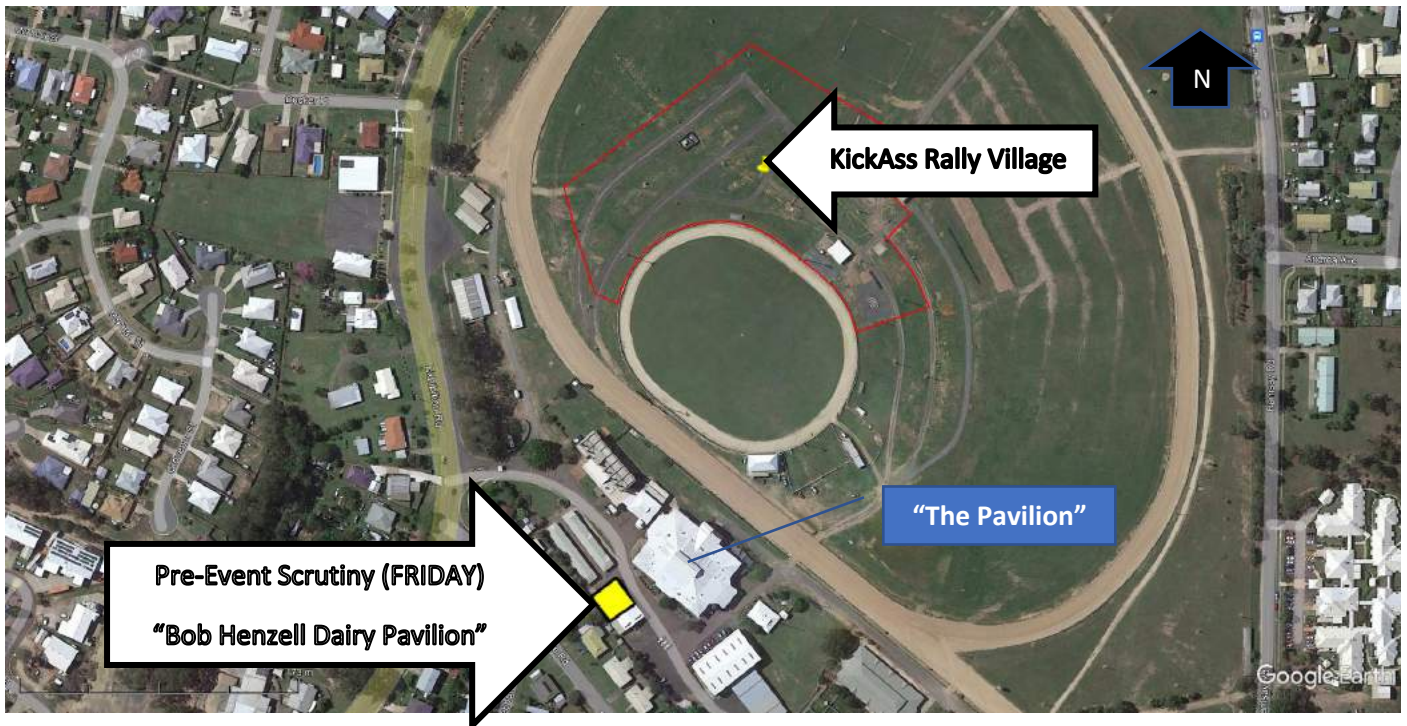
STAGE NAME	ARC		QRC	
	OPEN	CLOSE	OPEN	CLOSE
Brooyar West	0630hrs	1000hrs	0900hrs	1500hrs
Widgee	0900hrs	1300hrs	0900hrs	1500hrs
Kandanga	X	X	0630hrs	1500hrs
Imbil	X	X	0630hrs	1500hrs
Brooyar East	0900hrs	1300hrs	X	X
Glastonbury	X	X	X	X
Gympie Gold	0700hrs	1000hrs	X	X

NOTES:

1. ARC crews are permitted to traverse backwards through Brooyar East after having completed Gympie Gold Special Stage to begin their second pass, NO LATER THAN 0800hrs.
2. Any crew found on a Special Stage without the RSLite App switched on and operating will be reported to the Stewards with a recommendation for exclusion.

## APPENDIX 6 - SCRUTINY LOCATION & SCHEDULE

### Pre-Event Scrutiny Location - "Bob Henzell Dairy Pavilion"



### Scrutiny Schedule

**To be advised by Bulletin**

# APPENDIX 7 – “KICKASS” RALLY VILLAGE (Draft) OVERVIEW MAP

