



PRÓLOGO

83
Kilometers

69
Waypoints

28
Fuel Range

PARQUE FECHADO ROSSIO
PROLOGO
PARQUE ASSISTENCIAS PONTE SÔR
PARQUE FECHADO GAVIÃO

START
39°26.940'N
8°11.545'W

FINISH
39°27.925'N
7°56.229'W

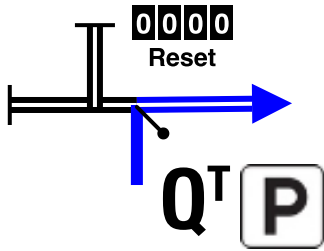
WARNING!!!

THIS ROUTE MAY BE DANGEROUS. FOLLOW THIS ROUTE AT YOUR OWN RISK.

Conditions change over time. Route leads to remote areas many miles from help. This is not a "closed" course. The route crosses and travels on public roads and highways where other vehicles, pedestrians, and animals may be present. Some hazards are identified here, for illustration purposes only, but most hazards are not identified or marked. Information provided is approximate, and should not be considered precise. Obey all laws and use caution at all times. If signs, maps, or other indicators suggest the route travels into closed, illegal, private property, or otherwise restricted areas, this roadbook should not be followed into such areas.

RALLY NAVIGATOR IS NOT RESPONSIBLE FOR THE ACCURACY OR SAFETY OF THIS ROUTE.

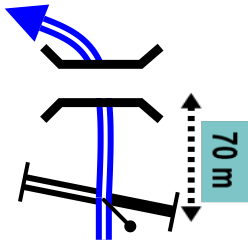
0,00
0,00




Pàrc Fèrmé
Parque Fechado

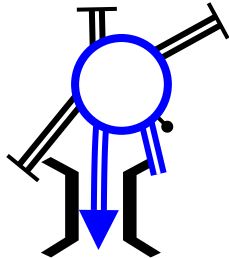
0,00 ↓ 1

0,13



0,13 ↓ 2

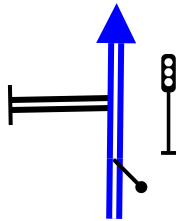
0,34





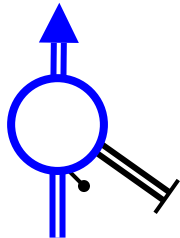
0,21 ↓ 3

0,98



0,64 ↓ 4

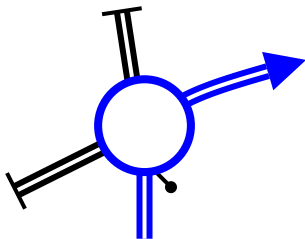
1,61





0,63 ↓ 5

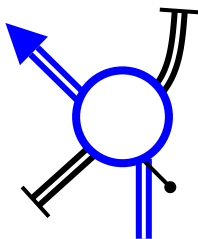
3,59





1,98 ↓ 6

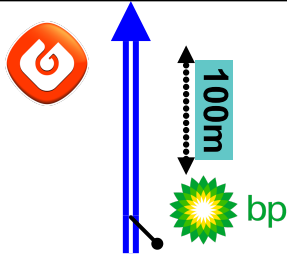
3,97





0,38 ↓ 7

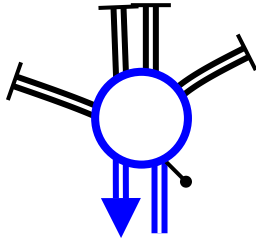
4,83



0,86

8

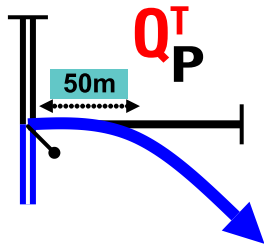
6,18



1,35

9

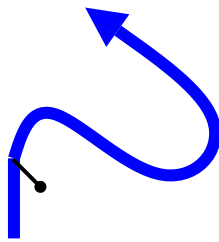
6,31



0,13

10

6,44

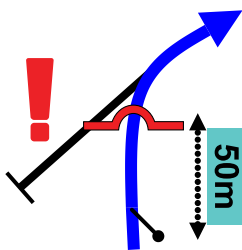


CHC

0,13

11

6,54



PP

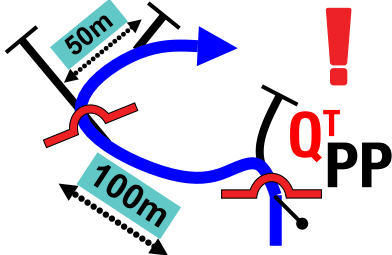
1

0,00

0,10

12

0,15

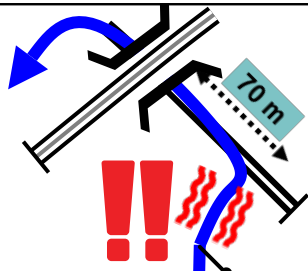


P ↘ VG

0,15

13

0,42

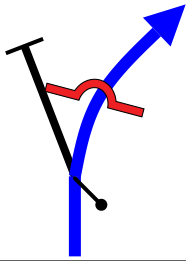


P

0,27

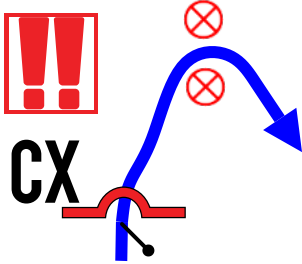
14

0,79



0,37 ↓ 15

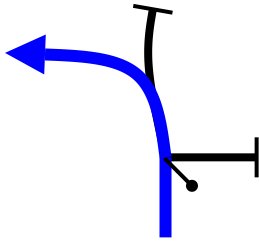
0,94



P S

0,15 ↓ 16

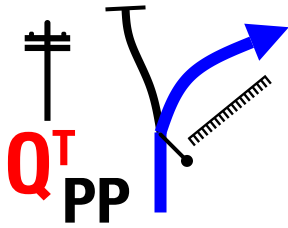
1,12



P ↗ CX

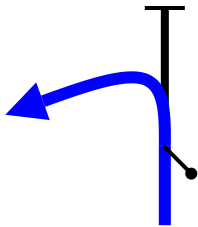
0,18 17

1,49



0,37 18

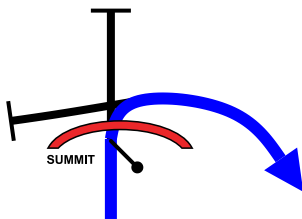
2,01



P ↗

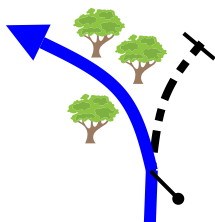
0,52 19

2,32



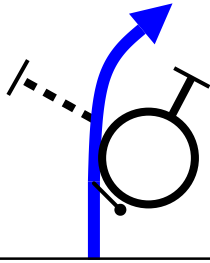
0,31 ↓ 20

2,61



0,29 21

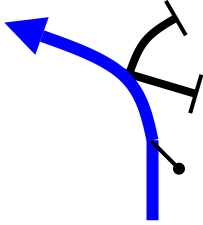
2,98



0,37

22

3,28



0,30

23

3,39

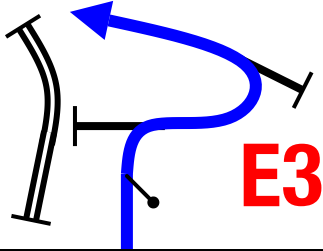


0,11

24

2

3,57

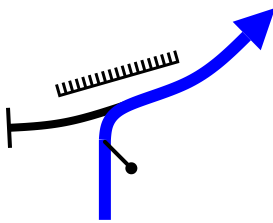


P E3

0,18

25

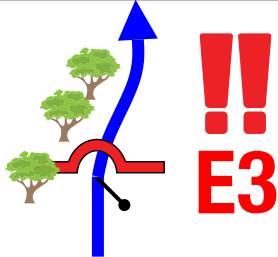
3,66



0,09

26

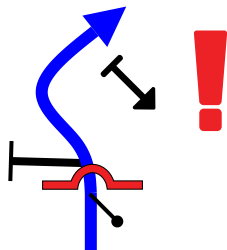
3,75



0,09

27

4,00

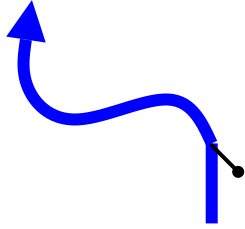


0,25

28

4,52

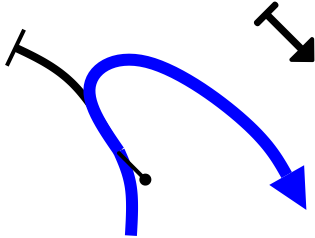
E3
!!



0,52

29

4,88



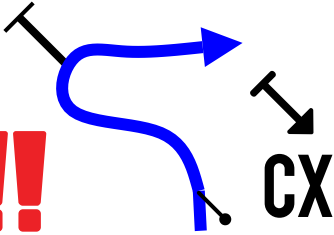
P ↘ **CX**

0,36

30

5,25

!!

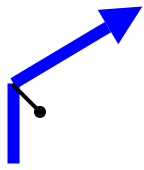


CX

0,37 ↓

31

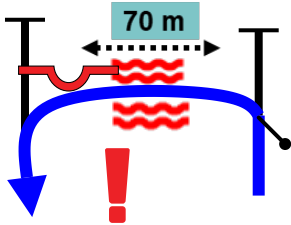
5,33



0,08 ↓

32

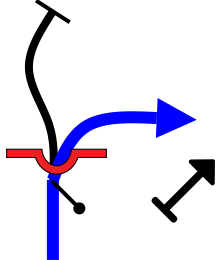
5,58



0,25 ↓

33

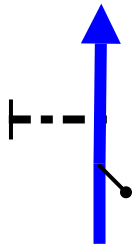
5,87



0,29 ↓

34

5,91



P ↗

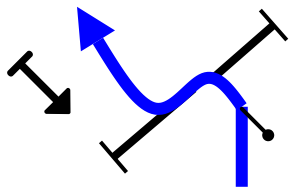
0,04 ↓

35



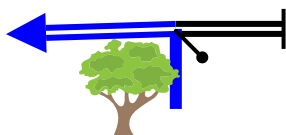
3

6,03



0,12 ↓ 36

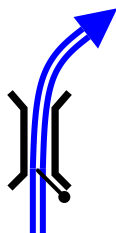
6,15
0,00



0,12 37

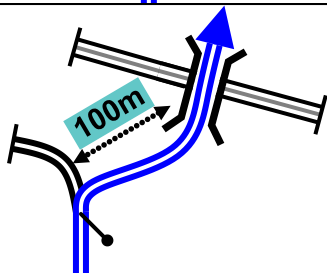
39°29.914'N
8°12.877'W

0,40



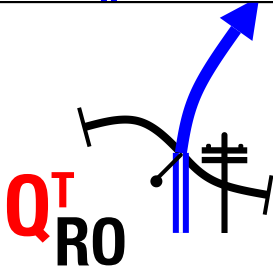
0,40 38

0,92



0,52 39

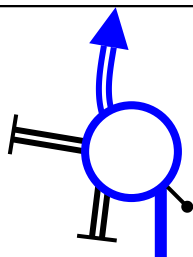
1,29



FPP

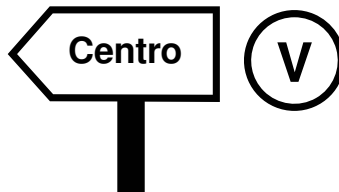
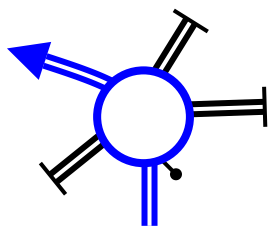
0,37 40

2,65



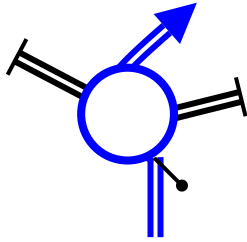
1,36 41

4,19



1,54 42

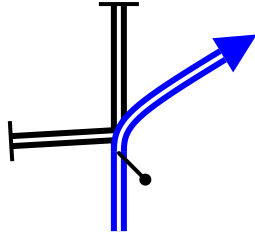
5,01



0,82

43

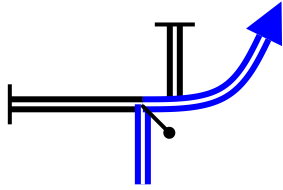
5,73



0,72

44

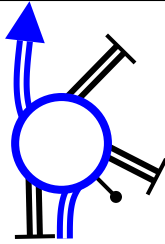
7,19



1,46

45

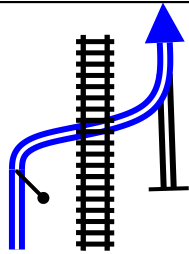
7,77



0,58

46

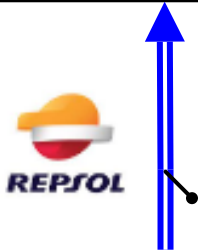
8,89



1,12

47

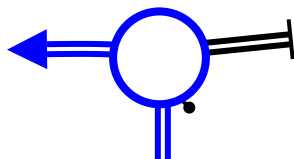
20,03



11,14

48

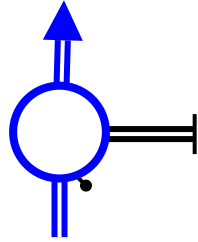
38,29



18,26

49

38,94



0,65

50

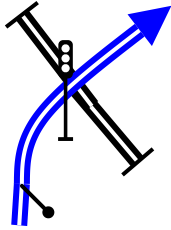
39,50



0,56

51

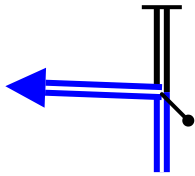
39,88



0,38

52

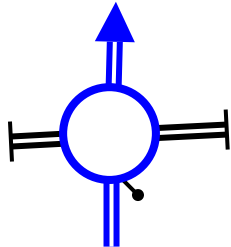
40,34



0,46

53

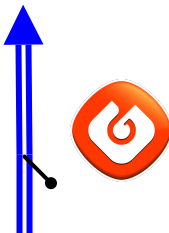
40,93



0,59

54

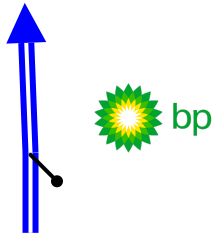
41,70



0,77

55

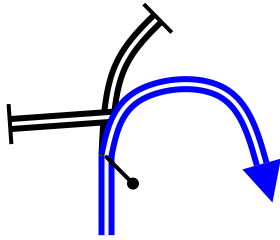
42,02



0,32

56

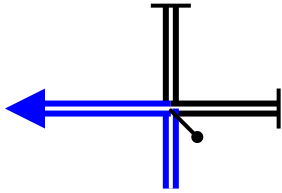
42,27



0,25

57

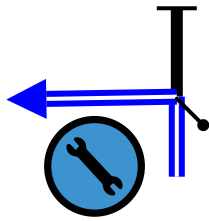
42,77



0,50

58

42,88



0,11

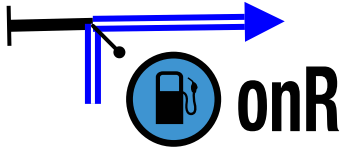
59



Parque de Assistência

39° 15.643'N
8° 00.523'W

42,93



0,05

60

0000
Reset

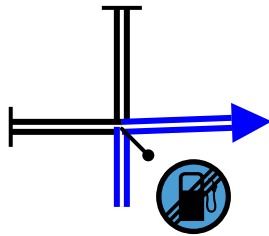


Parque de Assistência

39° 15.646'N
8° 00.526'W

0,00

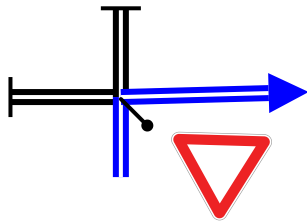
0,09



0,09

61

0,58

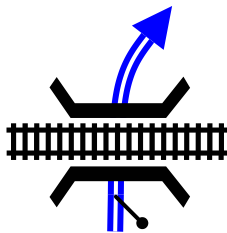


0,49

62

FRO

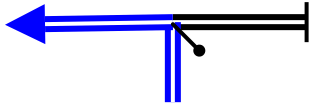
0,85



0,27

63

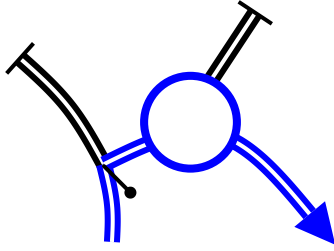
24,73



23,88

64

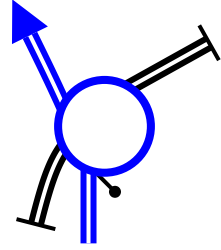
27,01



2,28

65

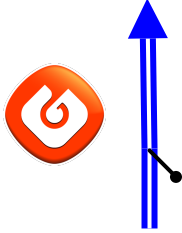
27,31



0,30

66

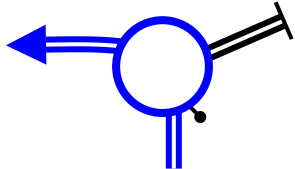
27,45



0,14

67

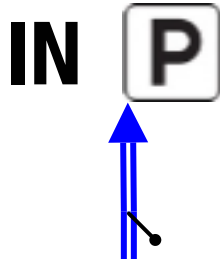
27,50



0,05

68

27,56



0,06

69

39° 27.925'N
7° 56.229'W

**83
Km**

**69
Waypoints**

**28 Km
Fuel Range**

START
39°26.940'N
8°11.545'W

FINISH
39°27.925'N
7°56.229'W

POWERED BY



PRÓLOGO

WWW.RALLYNAVIGATOR.COM


































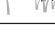


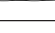
5.14 LEXIQUE ROAD BOOK FIA

Seuls les symboles suivants doivent être utilisés. Les symboles nouveaux ou supplémentaires doivent être approuvés par la FIA.

5.14 FIA ROAD BOOK LEXICON

Only the following symbols must be used. New or additional symbols must be approved by the FIA.

TRACKS	WAYPOINTS	ON TRACK	SYMBOLS
Tarmac road	Masked WP	Bump	Fence
Track Piste	Control WP	Dip hole	Barbed fence
Off track (HP)	Security WP	Compression	Rail road
Low visible track / traces	Navigation WP	Ditch	Hole
P Track Piste	Precise WP	Summit	Collapse, ditch, ravine, etc.
PP Principal track/ piste	Visible WP	Above bridge	Ruts
RO Road	Eclipse WP	Under bridge	Twisty / sinuous
P// Parallel track/piste	Waypoint number	Step up	Bumpy / broken
HP Off track Sight driving!	CONTROLS	Step down	Bumpy
HP Off track forbidden	DSS Start Selective Section	Up hill Down hill	Lateral inclination
FPP Follow principal track/piste	ASS Arrival Selective Section	Cut danger	Post
FRO Follow road	CP Check point	Right or Left over crest	Electric pole
SA Sandy	DN FN Start/Finish Neutralisation	Fence gate	Electric line
GV Gravel	DN Start neutralisation with speed limit	Fence with cattle gate	High voltage tower
SAFETY	DT FT Start/Finish Transfer	Wall gate	Antenna
Danger Level 1	DT Start transfer with speed limit	Wading / water cross	Well
Danger Level 2	T:25 Neut./transfer max. time allowed	Concrete pass	Tanks
Danger Level 3	Waiting for restart	CAPS	Barrels
Global danger in the note	Stop for restart	CAP Exit cap	Notable elements
DZ 40 Start Speed limit	CHG/SSV Fuel zone with authorized cat.	CAP_A Average cap	Tires
FZ 40 Finish Speed limit	Time control	CAP_C Calculated cap (only HP)	Sign posts
Stop	Assistance Service	OBLIC Cap that turns	Restricted/protected area
Important	Tyre marking zone		Buildings / houses
25.25 Red line under km = danger 2 in the note	End zone		Church / mosque

SYMBOLS		SYMBOLS		ABBREVIATIONS		ABBREVIATIONS	
	Ruine / abandoned		Small wadi	VG	Vegetation	EFF	Collapsed
	Fort / castle		Large wadi	L/R	Left and Right	ORN	Ruts
	Cemetery		Sandy wadi	R/L	Right and Left	BAD	Bad
	Village		River (water)	onL	On left	RP	Rejoin
	Bivouac		Lake / puddle	onR	On right	BTW	Between
	Tunnel		Plain / chott	kpL	Keep to the left	MODIF	Modification from Opening Car
	Pipeline		Towards / direction	kpR	Keep to the right	NEW NOTE	New note from Opening Car
	Wall		Road works	kpS	Keep straight	BIG SMALL FOLLOW	Written as text (English)
	Native / local camp		Reset / recal trip	-V	Less visible*		
	Petrol station & type of fuel		Distance	±V	More/less visible		
	Monument	DUNES / SAND		ALT	Alternance		
	Animals individual		Sandy plain	/	During		
	Animals		Big bowl "cuvette"	IN	In / into		
	Cairn		Sand spit	ET	And / next		
	Rocks		Dune	A	At		
	Mountain		Broken dune	CX	Stone / stony		
	Tree		Dunes	E3	Narrow*		
	Palm tree	DN	Dune	Q^T	Quit / leave*		
	Camel grass	DNX	Many dunes	.TJS	Always		
	Vegetation	DNT	Small dune "dunette"	NBX	Many		
	Slope	L1 L2 L3	Dunes difficulty level	IMP	Imperative		

* In red in the diagram box and black in the description box
* En rouge dans la case diagramme et en noir dans la case description

Road book lexicon icons are provided by rallynavigator.com