



Western Regional Event

2022 RALLY NEVADA

Advance Information Packet

Includes RECCE and SERVICE info



NOTICE BOARD at: <https://webapp.sportity.com/channel/nv2022>

SPORTITY EVENT PASSWORD: NV2022

or use the SPORTITY App on your phone with the same password



Welcome to Rally Nevada!

Table of Contents

WELCOME	3
EMERGENCY CONTACT NUMBERS.....	4
RALLY COMMUNICATIONS	4
CHECK-IN & INFORMATION	5
RECCE CHECK-IN & PROCEDURES	5
RECCE PROCEDURES	5
COMPETITION SCHEDULE	6
MAP: Local Area.....	7
MAP: Check-In, Scrutineering, Awards Ceremony & Dinner	8
MAP: Service Area Overview	9
MAP: Service Area Detail	10
MAP: Rally Overview.....	11
MAP: Stage 1/3/5 Paymaster Canyon	12
MAP: Stage 2/4/6 Pat's Opus & Finale	13
SCRUTINEERING SCHEDULE	14
SERVICE INFORMATION	14
California Rally Series INFORMATION.....	15
SATURDAY Awards and Dinner	16

WELCOME

We are excited to have everyone back in Tonopah for this event! On behalf of the entire Organizing Committee and the local community, thank you for supporting the rally and the businesses in the area.

- Timecards will again be the primary mode of scoring and tracking for the event, with logs used as backup.
- Note the Parc Expose is MANDATORY for your car and a crew member – competitors can attend with their car, or they can continue to recce during Parc Expose hours and a Service Crew member can be present instead.
- Service will be held in the same location as prior years near the end of the last stage of each section. Nearby in downtown is food, auto parts, etc.
- **IMPORTANT CHANGE** - we are making a change to the course which will also be in an upcoming bulletin: it will be made up of TWO stages run THREE times.
 - Originally, we planned for three stages, but are combining the 2nd and 3rd stage into a single stage to reduce our worker requirements.
 - A KMZ file for the 2 stages will be later available on the Notice Board/Sportity under the section labeled: CoC Documents.
 - This document reflects the new two-stage format.
- For weather, we are anticipating highs in the 50's and lows in the 30's, be prepared – we might even have rain in the morning!
- Drugs and alcohol are strictly prohibited during the event.

The Rally Nevada Organizing Team *thanks you!*

EMERGENCY CONTACT NUMBERS

Use 911 for Emergencies

Note: Cellular phones do not work in all areas of Nye and Esmeralda Counties

Tonopah Area - Medical

Mt Grant General Hospital (Mineral County)

200 S "A" St.
Hawthorne, NV 89415
702-945-2461

Critical Access Care

Medical Office – M-F 8-8 Sat 8-4

Nye County Ambulance

775-751-7000

for Zenith 1-2000 From cell phones – Dial *NHP* (*647)

Tonopah Volunteer Fire and Ambulance

209 N. St. Patrick
Tonopah NV. 89049
Non-Emergency—775-482-3926

Nye County Sheriff's Office

101 Radar Rd.
Non-Emergency – 775-482-8101

Central Nevada Regional Care

825 S Main Street
Tonopah, NV. 89049
Appointments & General Info
775-302-5800

Nevada Highway Patrol

Dial "Operator" and ask

Goldfield-Esmeralda County Sheriff's Office

775-485-6373
Emergency-Call 911

Air Ambulance/Medical Evacuation

Careflight

800-648-4888

Las Vegas, NV Area Medical

UMC (University Medical Center)

1800 W Charleston Blvd
Las Vegas, NV
(702) 383-2000
Trauma Level: Level I Trauma Center

Sunrise Hospital & Medical Center

3186 S Maryland Pkwy
Las Vegas, NV 89109
(702) 961-5000
Trauma Level: Level II Trauma Center

RALLY COMMUNICATIONS

The Rally will use a Safety Net via 2m Amateur Radio frequencies

Frequencies may change if conditions change

Net Control Phone Number 951.452.7259

Net Control will use 147.570 Primary and 146.420 Backup

Stage 1 will use 146.425 Primary and 146.525 Backup

Stage 2 will use 147.420 Primary and 147.550 Backup

CHECK-IN & INFORMATION

Competitors, crew, media, and volunteers **MUST** be **licensed and pre-registered**, and must have passed all administrative checks prior to the event.

- Review Section 4 of the Supplemental Regulations for LICENSING and REGISTRATION details.
- You will Check-In when you arrive per the Competitor Check-In Schedule in Section 3 of the Supplemental Regulations.

RECCE CHECK-IN & PROCEDURES

Prior to Recce, BOTH competitors **MUST** check-in *per above*. Both driver and co-driver must be present in their recce vehicle.

RECCE PROCEDURES

You will need your route book, these recce instructions, and the Recce Identification on your recce vehicle. See the Supplemental Regulations for specific rules.

- Recce is allowed only during the schedule listed in the Supplemental Regulations
 - We will have workers on the stages before and during recce. They are always alert for unauthorized driving of the stages.
- Drive with your headlights ON
- **As noted in Supplemental Regulations 8.4.1, all stages are ONE WAY**, the same direction as the in the routebook
 - **you are not allowed to go reverse direction**
- **As noted in Supplemental Regulations 8.4.2, SPEED LIMIT IS 30mph** on the stages; take your time.
- There may be an Observation Control.
- A KMZ file for the stages can be accessed on the Notice Board/Sportity under the section labeled: *CoC Documents* (when it becomes available due to our stage change)
- During recce you may encounter oncoming traffic, off-highway vehicles (OHV, UTV, SXS), wild horses (especially towards end of Paymaster Canyon stage), local residents, road graders, and our stage crews. **Please use appropriate caution while driving.**

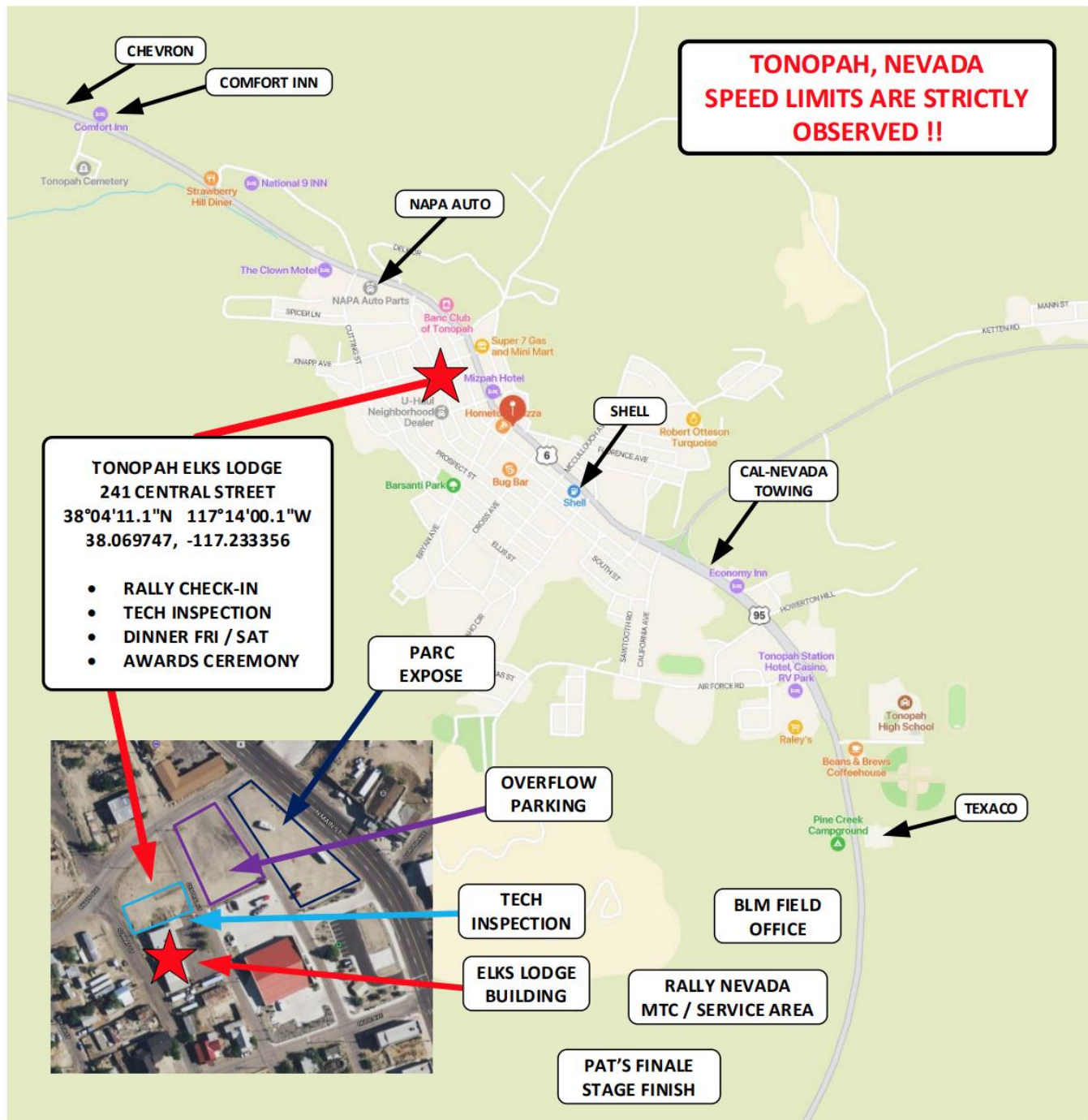
COMPETITION SCHEDULE

Note this is revised from the Supplemental Regulations, combining the 2nd and 3rd stages into one stage.

TOTALS OF THE RALLY				
	SS	TRANSIT	TOTAL	%
SAT Leg 1 (Section 1, 2 & 3)	80.1	36.2	116.3	69%
Total -- 6 SS	80.1	36.2	116.3	69%

START (Leg 1 / Section 1, 2 & 3)										SATURDAY
TC	LOCATION	SS DIST	TRANSIT DIST	TOTAL DIST	CONTROL	LATENESS TIME	TRANSIT TIME	TARGET TIME	FIRST CAR DUE	
0	MTC OUT (SERVICE)								11:00	Section 1
	distance to next refuel	(26.69)	(12.08)	(38.77)						
1	transit		3.38	3.38			0:12	0:12	11:12	
SS 1	Paymaster Canyon	12.26			0:03	0:21			11:15	
2	transit		8.54	20.80			0:17	0:38	11:53	
SS2	Pat's Opus	14.43			0:03	0:27			11:56	Section 2
2A	SERVICE IN		0.16	14.59			0:02	0:29	12:25	
	SERVICE A									
2B	SERVICE OUT -- REGROUPING IN		0				0:30	0:30	12:55	
RZ	REFUEL									
1	distance to next refuel	(26.69)	(12.08)	(38.77)						Section 3
2C	REGROUPING OUT		0				0:15	0:15	13:10	
3	transit		3.38	3.38			0:12	0:12	13:22	
SS 3	Paymaster Canyon	12.26			0:03	0:21			13:25	
4	transit		8.54	20.80			0:17	0:38	14:03	
SS 4	Pat's Opus	14.43			0:03	0:27			14:06	Section 3
4A	SERVICE IN		0.16	14.59			0:02	0:29	14:35	
	SERVICE B									
4B	SERVICE OUT -- REGROUPING IN		0				0:45	0:45	15:20	
RZ	REFUEL									
1	distance to next refuel	(26.69)	(12.08)	(38.77)						Section 3
4C	REGROUPING OUT		0				0:15	0:15	15:35	
5	transit		3.38	3.38			0:12	0:12	15:47	
SS 5	Paymaster Canyon	12.26			0:03	0:21			15:50	
6	transit		8.54	20.80			0:17	0:38	16:28	
SS 6	Pat's Opus	14.43			0:03	0:27			16:31	Section 3
6A	MTC IN (SERVICE)		0.16	14.59			0:02	0:29	17:00	
Saturday Totals										
		80.07	36.24	116.31						

MAP: Local Area



MAP: Check-In, Scrutineering, Awards Ceremony & Dinner

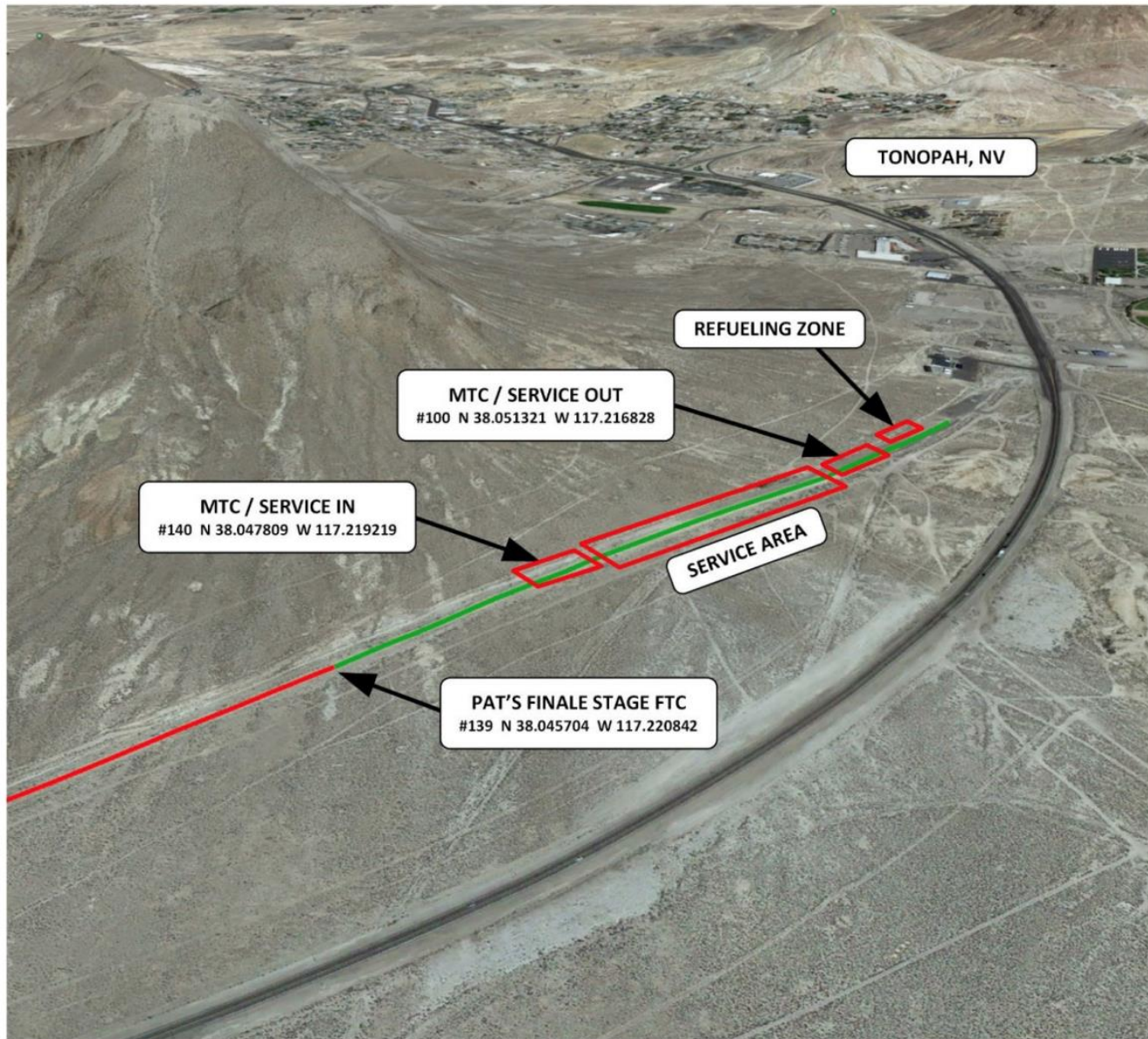


RALLY CENTRAL – EVENT SIGN-IN - TECH INSPECTION – AWARDS CEREMONY

**TONOPAH ELKS LODGE
241 CENTRAL STREET
38°04'11.1"N 117°14'00.1"W
38.069747, -117.233356**

- RALLY CHECK-IN
- TECH INSPECTION
- DINNER FRI / SAT
- AWARDS CEREMONY

MAP: Service Area Overview

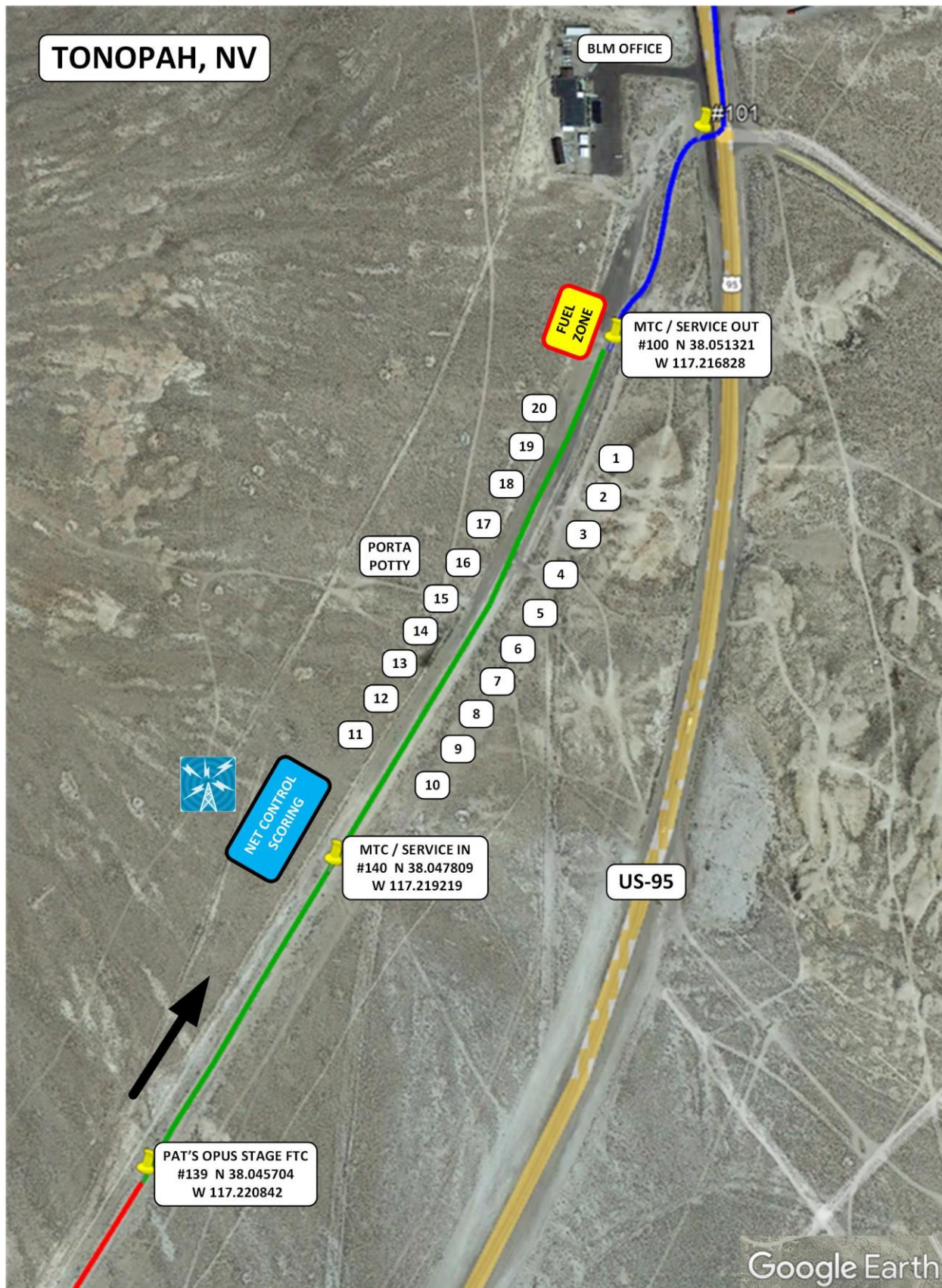


SERVICE AREA / MTC

GPS coordinates are approximate.

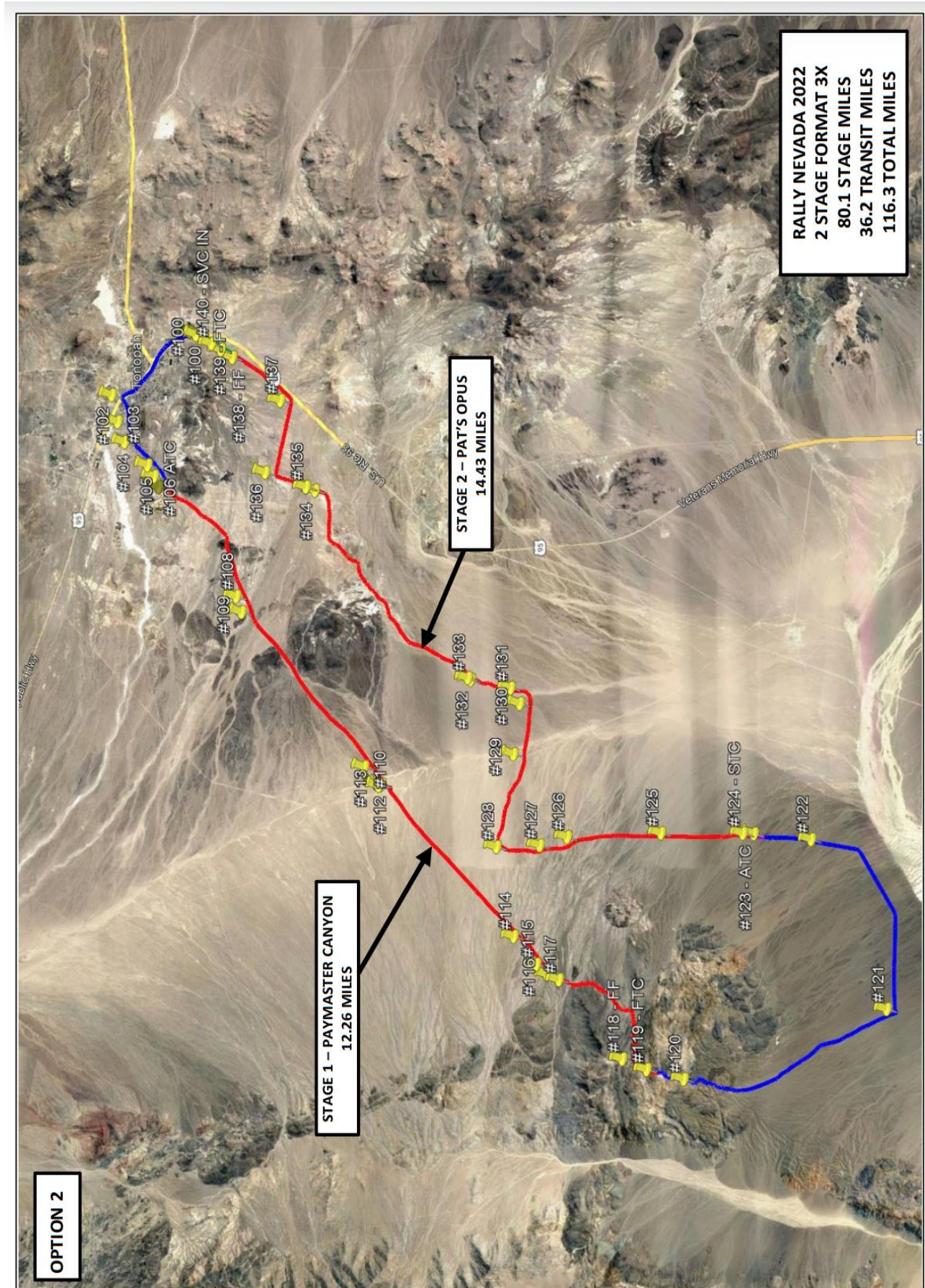
MAP: Service Area Detail

Parking Assignments are in progress – look for an announcement showing your spot

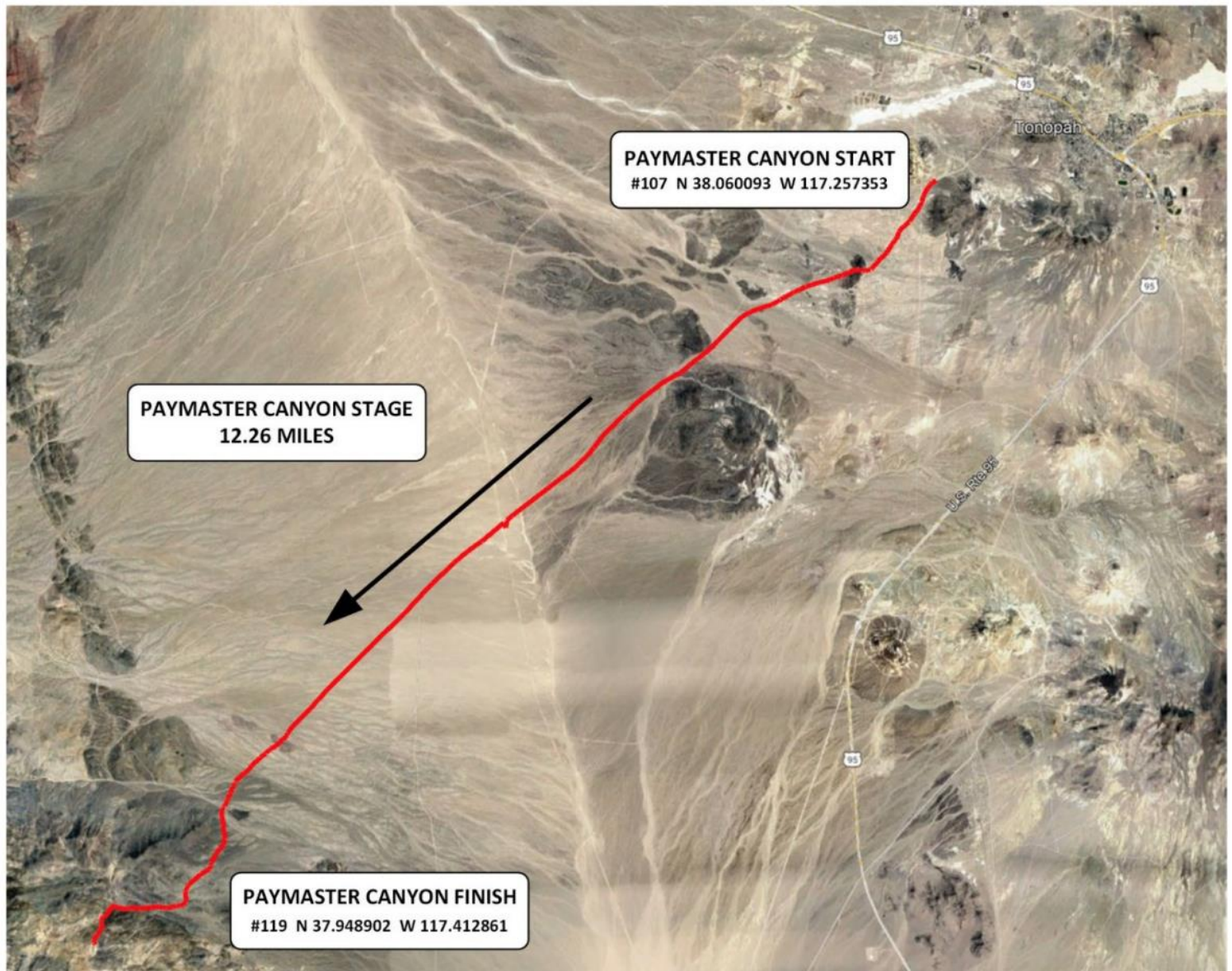


2022 RALLY NEVADA - SERVICE AREA PIT ASSIGNMENTS

MAP: Rally Overview



MAP: Stage 1/3/5 Paymaster Canyon



PAYMASTER CANYON STAGE

SCRUTINEERING SCHEDULE

To ensure scrutineering can be done in a timely manner, per RCR requirements, all event required stickers and identification are to be on the competition vehicle **prior** to scrutineering.

- Be aware that this year we are **requiring a metal shovel for spill cleanup and for fires**, per BLM request (Supplemental Regulations 10.5.6). Avoid using chemical-based fire extinguishers on the ground.
- Per Supplemental Regulations 10.4, Scrutineering is scheduled and a bulletin will specify your appointment time.

SERVICE INFORMATION

Notes:

- Teams that intend to restart after an issue must do both below:
 - Must create an Inquiry via the Notice Board to declare their intention
 - Must arrange to be re-inspected *and* approved by the Chief Scrutineer prior to the first car starting at your intended restart control.
- Note that Supplemental Regulations 13.5.7 states this is a single-leg rally, so RCR 6.3 does not apply and you will be scored as a DNF. Review that section of the Supplemental Regulations and the RCRs for more details.
- Teams that have decided to DNF must use the ARA Withdrawal Slip to declare their intentions ***or*** instead can use the Notice Board inquiry form.
- Leave the area as clean as it was when you arrived – clean your trash, be careful with spills.

California Rally Series INFORMATION

The California Rally Series (CRS) is a non-profit organization formed by the event organizers and the officers of the series. The CRS has three major goals:

- Support event organizers.
- Provide championships with meaningful year-end awards for local competitors.
- Promote the sport of Performance Rallying.

CRS members will also be scored by their CRS class. If you are a CRS member, please review CRS classes in the CRS rulebook and send an email to mpgibeault@gmail.com with your name, car number, and CRS class before the event.

Hey, I'm in NEVADA right now – why the heck would I want to join the California Rally Series?!



You ask a fair question, and here's a fair answer.

The California Rally Series (CRS) has outgrown its name – a bunch! – and Rally NEVADA is now part of the CRS Rally Championship.

This means if you join the CRS prior to the start of the first stage at Rally NEVADA you can earn points towards the CRS Rally Championship, in addition to earning your ARA awards.

And it's cheap to join – just \$30 per year. The money helps all organizers in the series with equipment like clocks, radios, and signs, and trophies for the competitors at the end of the year.

The CRS is an overlay series, sanctioning-body-agnostic, featuring a collection of rallies in Oregon (OTR), Idaho, Colorado, Nevada, and, yes, even California (Prairie City Rallysprint and Gorman Ridge Rally). If you are thinking about competing in any of these events too, why not vie for a CRS championship while you're at it?

So why join the CRS? Because you're supporting grass-roots organizers, and earning points towards a championship.

***It's easy: sign up on-line at
http://www.rallydata.com/coldfusion/crs_membership.cfm***

Read more about us www.californiarallyseries.com

Rally on!

***John Dillon
CRS Director***

SATURDAY Awards and Dinner

Please note that this event will make dinners available for competitors and volunteers Friday and Saturday night. The Elks Lodge will be "Rally Central" for the weekend and we strongly urge you to stop in and take advantage of their hospitality, as well as making time for the special Awards Event, PM Tribute and dinner party on Saturday after the event.

Donations for the Elks Scholarship Fund are welcome and will be taken at the coffee & hot chocolate stations.

Drivers and co-drivers will each receive complimentary dinner tickets for Friday & Saturday evenings. Additional tickets at \$15 per meal per person are available for purchase to team members and volunteers.

SPECIAL THANKS FROM THE ORGANIZING COMMITTEE:

This event is a direct result of all the hard work of one couple, Denise & Pat McMahon. They have been leaders in Southwest region – involved in rally for over 40 years and organizing events for the last 20. Without them many events would never have gotten off the ground. We lost Pat in 2021 to Covid and it is a blow that all of us still feel. His warm smile and determination made McMahon events one of a kind and he is sorely missed. This committee was formed to fill the void he has left and we dedicate the running of this event to his memory

V01