

## **RALLY NEVADA 2022 - BULLETIN #3**

11/7/2022 0900 EST



### **To all Competitors**

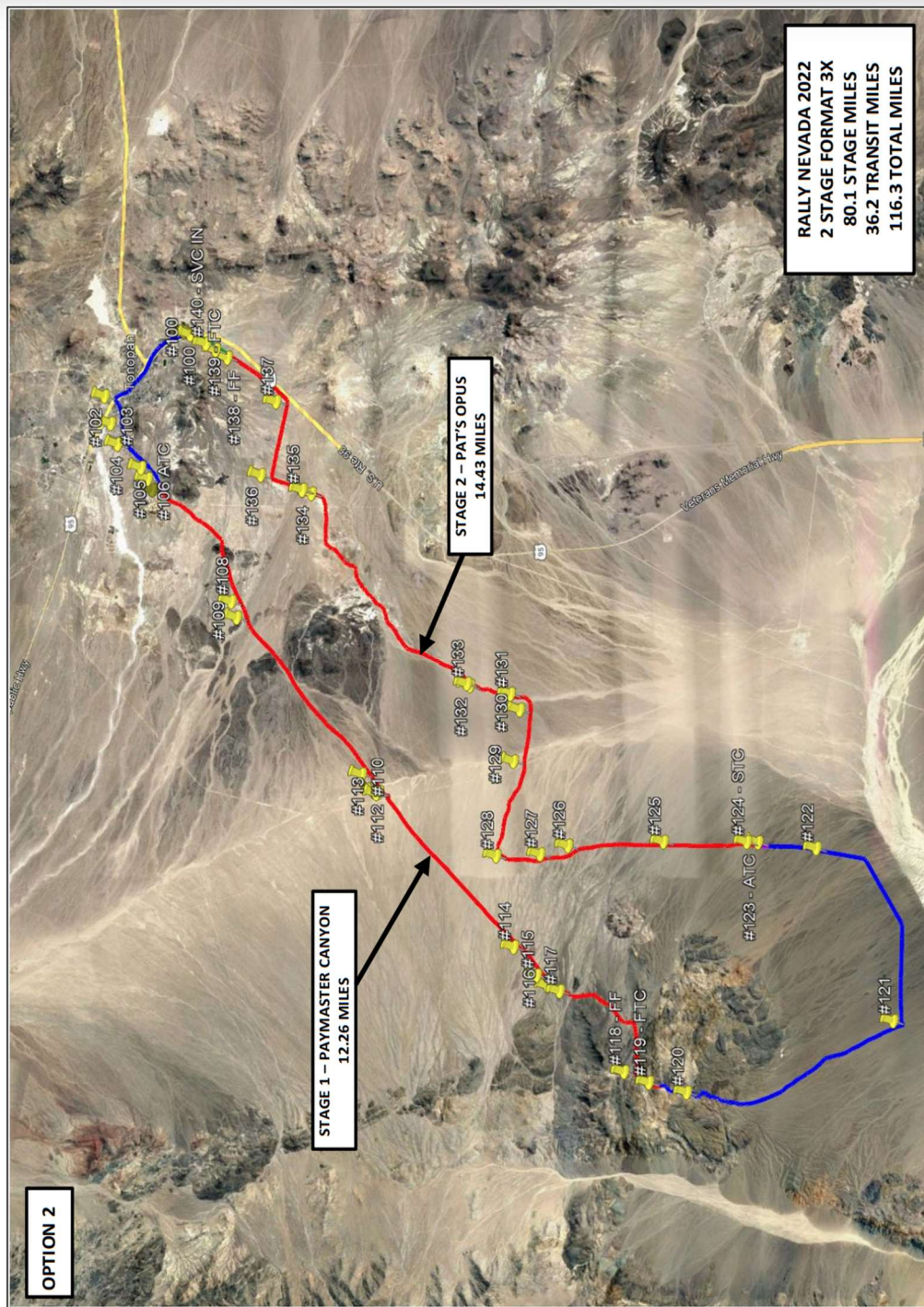
1. If a fire occurs and cannot be put out, then you must show the SOS sign and follow the procedure described in RCR 5.13.2; note that the stage is then immediately stopped - ensure it is a fire and not steam from a radiator!
2. It was not our intent to require competition vehicles to stay overnight in service Friday night. Delete the sentence "This includes overnight between Friday and Saturday" in Supplemental Regulations 11.10.
3. The transit into Service was listed as 2 minutes in the Supplemental Regulations Appendix A1; change that transit to 5 minutes, the required minimum transit time per RCR 1.4.1. This change is also in the new itinerary noted below.
4. Due to worker constraints, we are combining the 2<sup>nd</sup> and 3<sup>rd</sup> stage (Pat's Opus and Pat's Finale) into a single stage, with the resulting 6 stages listed on the timecard as: Paymaster Canyon, Pat's Opus, Paymaster Canyon 2, Pat's Opus 2, Paymaster Canyon 3, and Pat's Opus 3. This stage consolidation causes the following replacements in the Supplemental Regulations:

- a. Replace **APPENDIX A1 ITINERARY** with this new Itinerary:

TOTALS OF THE RALLY				
	SS	TRANSIT	TOTAL	%
SAT Leg 1 (Section 1, 2 & 3)	80.1	36.2	116.3	69%
Total – 6 SS	80.1	36.2	116.3	69%

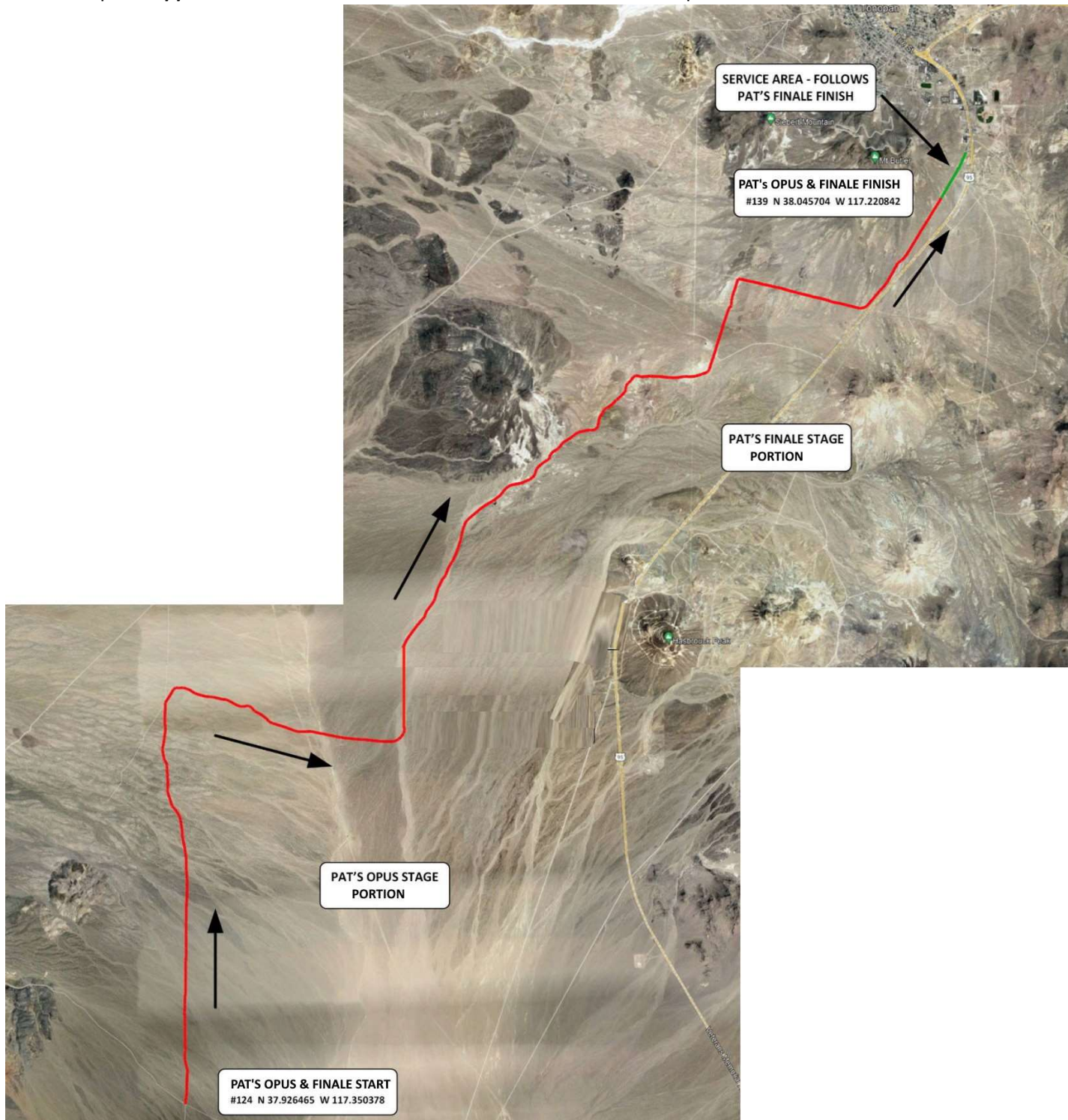
START (Leg 1 / Section 1, 2 & 3)									SATURDAY
TC	LOCATION	SS DIST	TRANSIT DIST	TOTAL DIST	CONTROL	LATENESS TIME	TRANSIT TIME	TARGET TIME	FIRST CAR DUE
0	MTC OUT (SERVICE)								11:00
	distance to next refuel	(26.69)	(12.08)	(38.77)					
1	transit		3.38	3.38			00:12	00:12	11:12
SS 1	Paymaster Canyon	12.26			00:03	00:21			11:15
2	transit		8.54	20.80			00:17	00:38	11:53
SS 2	Pat's Opus	14.43			00:03	00:27			11:56
2A	SERVICE IN		0.16	14.59			00:05	00:32	12:28
	SERVICE A								
2B	SERVICE OUT – REGROUPING IN		0				00:30	00:30	12:58
RZ	REFUEL								
1	distance to next refuel	(26.69)	(12.08)	(38.77)					
2C	REGROUPING OUT		0				00:15	00:15	13:13
3	transit		3.38	3.38			00:12	00:12	13:25
SS 3	Paymaster Canyon 2	12.26			00:03	00:21			13:28
4	transit		8.54	20.80			00:17	00:38	14:06
SS 4	Pat's Opus 2	14.43			00:03	00:27			14:09
4A	SERVICE IN		0.16	14.59			00:05	00:32	14:41
	SERVICE B								
4B	SERVICE OUT – REGROUPING IN		0				00:45	00:45	15:26
RZ	REFUEL								
1	distance to next refuel	(26.69)	(12.08)	(38.77)					
4C	REGROUPING OUT		0				00:15	00:15	15:41
5	transit		3.38	3.38			00:12	00:12	15:53
SS 5	Paymaster Canyon 3	12.26			00:03	00:21			15:56
6	transit		8.54	20.80			00:17	00:38	16:34
SS 6	Pat's Opus 3	14.43			00:03	00:27			16:37
6A	MTC IN (SERVICE)		0.16	14.59			00:05	00:32	17:09
Saturday Totals		80.07	36.24	116.31					V03-ROB

- b. Replace **Appendix A5 STAGES – OVERVIEW MAP** with this new Map





- c. Replace **Appendix A7 STAGE 2 MAP – PAT’S OPUS** with this new Map of PAT’s OPUS & FINALE



- d. Remove **APPENDIX A8 STAGE 3 MAP** (this stage becomes part of the stage in the map above)

**Rob Bohn**

Clerk of the Course - 2022 Rally Nevada

Email: [RobBohn@outlook.com](mailto:RobBohn@outlook.com) Cell: 317-877-0303

Notice Board: <https://webapp.sportivity.com/channel/NV2022> Password: NV2022