

secto 20
RALLY 26
FINLAND 30.7.-2.8.

WRC
FIA FIA WORLD RALLY
CHAMPIONSHIP



RALLY GUIDE



secto
automotive

JYVÄSKYLÄ



KS

Keski-Suomi
Mellersta Finland
Central Finland

HIMOS
JÄMSÄ

Capital Box



WRC



FIA WORLD RALLY
CHAMPIONSHIP

HANKOOK
driving emotion

wolf
LUBRICANTS

AsahiKASEI

FORUM8
フォーラムエイト

STOWA
WATCHES

REFLO

FANATEC

TATA
COMMUNICATIONS

1951-2026
75th



ORGANISER OF SECTO RALLY FINLAND



#SectoRallyFinland
www.sectorallyfinland.fi

secto 20 RALLY 26 FINLAND 30.7.-2.8.

AKB ORGANISER OF
SECTO RALLY FINLAND

www.sectorallyfinland.fi
#SectoRallyFinland    

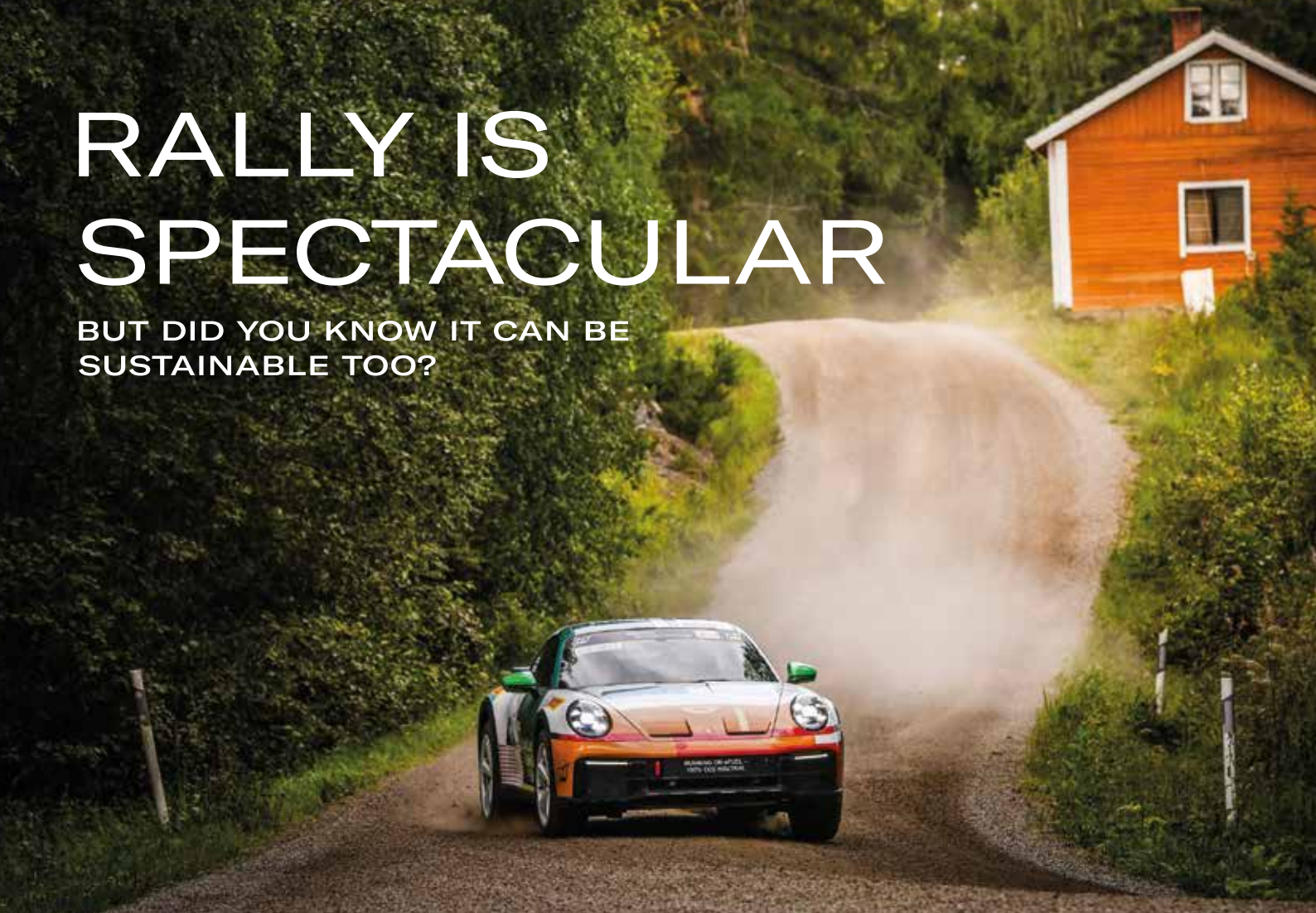


TITLE SPONSOR		MEDIA PARTNER			
					
OFFICIAL PARTNER					
					
OFFICIAL SUPPLIER					
					
EVENT PARTNER					
					
EVENT SUPPLIER					
					
					
LOCAL SUPPLIER					
					
					

SUSTAINABLY TOGETHER 

RALLY IS SPECTACULAR

BUT DID YOU KNOW IT CAN BE
SUSTAINABLE TOO?



Secto Automotive is a Finnish-owned car leasing operator, offering corporate customers both a hassle-free and fossil-free car ownership experience.

As the title sponsor of Rally Finland, we believe motorsport can drive change. In 2021, the WRC committed to sustainable fuels, proving that high-performance racing and sustainability can go hand in hand. Inspired by this shift, we launched Secto Automotive Labs – a hub for developing smarter, greener mobility solutions.

Motorsport has always pushed the limits of technology. Now, it's leading the charge toward a more sustainable future. That's why we're here – to help make rallying part of the solution, not the problem.

Sustainability isn't a challenge. It's an opportunity. Let's drive change together.

secto
automotive

SECTO AUTOMOTIVE
LABS



VOITTAJATIIMI

TOYOTAN UUSI SÄHKÖAUTOMALLISTO



URBAN CRUISER

Kompakti ja
käytännöllinen

TOYOTA C-HR+

Näyttävä
muotoilu

TOYOTA bZ4X

Parempana
kuin koskaan

TOYOTA bZ4X TOURING

Tilaa
kaikelle

Toyotan maailmanluokan laatu, kestävyys ja luotettavuus – nyt täyssähköisenä. Kaikki sähköautouutuudet myös nelivetona. Varmuuden maksimoi 10 vuoden / 1 miljoonan km:n EV-akkuriva⁽¹⁾.

YHDESSÄ PIDEMMÄLLE

Autojen hinnat 03/2026. Pidätämme oikeudet hinnanmuutoksiin. Hinnat ovat kokonaishintoja ja sisältävät toimituskulut 600 €. **URBAN CRUISER** Active 61 kWh 2WD 39 990 €, energiankulutus 151 Wh/km, CO₂-päästöt 0 g/km, WLTP-toimintamatka jopa 426 km². **TOYOTA C-HR+** Active 77 kWh 2WD 45 590 €, energiankulutus 134 Wh/km, CO₂-päästöt 0 g/km, WLTP-toimintamatka jopa 607 km². **TOYOTA bZ4X** Active 57,7 kWh 2WD 39 990 €, energiankulutus 139 Wh/km, CO₂-päästöt 0 g/km, WLTP-toimintamatka jopa 444 km². **TOYOTA bZ4X TOURING** Active Tech 74,7 kWh 2WD 49 100 €, energiankulutus 140 Wh/km, CO₂-päästöt 0 g/km, WLTP-toimintamatka jopa 591 km². ⁽²⁾Kulutus ja toimintamatka on testattu laboratoriossa keskivertoajoa jäljittävällä WLTP-mittauksella. Tulokset on tarkoitettu automallien väliseen vertailuun, eivätkä päde tarkasti liikennekäytössä. Kulutukseen ja toimintamataan vaikuttavat mm. ajotapa, nopeus, lämpötila, sää- ja ajo-olosuhteet sekä auton kuormaus. Ajoakkujen koot ovat bruttokapasiteetteja. Lopulliset autokohtaiset arvot vahvistetaan ajoneuvo kohtaisella COC-todistuksella. Kuvan autot erikoisvarustein. **TAKUU** 3 v/100 000 km, korin puhkiuostumattomuustakuu 12 v. Säännöllisesti huollettujen sähköautojen akkutakuu 8 v/160 000 km kun akun heikentyminen alle 70 %:iin alkuperäisestä kapasiteetista ja EV-järjestelmän takuu 5 v/100 000 km. ⁽⁴⁾**AKKURIVA** Toyota-sähköautojen ajoakuille myönnetään 10 v/1 milj. km kattava Toyota-määräaikaishuollon aktiivoina EV-akkuriva. Ei koske Proace-tuoteperhettä ml. Proace City -mallit.

WELCOME

Dear rally friends,

We are heading for the 75th edition of our event, started by a group of motoring enthusiasts, who had visited the legendary Rallye Monte Carlo and wanted to build something similar in Finland. In 1951 it all began, with 26 cars at the start and Arvo Karlsson – Vilho Mattila taking the top honours with their Austin Atlantic after 1666 kilometres and two (!) special stages, one of them already back then in Harju.

We have come a long way from those days to our modern version of an FIA World Rally Championship event with 20 stages totalling 316.04 km of competitive mileage. Our service park in Jyväskylä Paviljonki will once again be the focal point of the rally, visited five times from Thursday to Saturday and holding the overnight parc fermé, as well as many attractions for the spectators.

Secto Rally Finland was setting new standards in 2025 with its one-stage concept for the Super Sunday, gaining much praise from competitors, media, spectators and officials alike. In 2026, this concept will be fine-tuned to the next level, when all the main action will be concentrated in the Himos-Jämsä Rally Arena: regroup between the runs, flying finish of the Himos-Jämsä special stage and the final podium and prize-giving of the rally. All this and the gruelling last kilometre of the stage can be enjoyed without having to move from your spot!

Sunday stage is not the only change in our rally route, but an amazing 66% of the stages are different from those run in 2025. The new stage mileage regulations, as well as the rest hours have been a guiding light when planning the changes, together with our aim always to bring new experiences to our competitors and spectators alike.

The 4th edition of our Spark The Future Sustainability Forum will offer an exciting line-up of keynote speakers and sustainability topics, giving the latest insight into the future of mobility, innovation, high performance and sustainable leadership. More details of the seminar programme will be published soon, so keep following our social media channels and website.

One important part of our sustainability work is our shuttle bus service to the special stages. The shuttle busses, which were highly popular last year, will once again be available on every rally day. The service offers a smooth, safe and convenient way to experience world-class rally action without the need for a private car.

This year, we are also introducing new shuttle routes that cover multiple special stages during the same day – making it easier than ever to experience more rally action with one convenient transport solution. Shuttle departures will again be available from Jyväskylä, Tampere and Lahti, making it easy for both domestic and international guests to access the special stages. More detailed schedules and booking information will be published soon.

We are looking forward to seeing you all in Secto Rally Finland!

Secto Rally Finland Organising Team

CONTENTS

1. Welcome	5	11. Accommodation and Travel	27
1.1 Sustainability Overview	8	11.1 Accommodation	27
1.2 Previous Winners	9-10	11.2 Travel Packages	28
2. Contact Details	11	11.3 Services in Jyväskylän Paviiljonki	28
2.1 Permanent Contact Details	11	11.4 Airports and general travel information	29
2.2 Rally HQ Contact Details	12	12. Media	30
2.3 Media Contact Details	12	12.1 Media Contacts before the Rally	30
3. Programme & Critical Deadlines	13	12.2 Media Accreditation Procedures	30
3.1 Schedule before the Rally Week	13-14	12.3 How to Apply for Accreditation?	30
3.2 Schedule during the Rally Week	14-16	13. Medical Information	31
4. Entry Details	17	14. General Facts and Information	32
4.1 FIA Titles for which the Rally counts	17	14.1 General Facts about Finland	32-34
4.2 Criteria for Acceptance of Entries	17	14.2 City of Jyväskylä	34
4.3 Entry Fees	17-18	14.3 Municipality of Jämsä	35
4.4 Contents of the various Entry Packages	19	14.4 Municipality of Konnevesi	36
5. Service Park	20	15. Useful Contacts	37
5.1 Location	20	Appendices	39
5.2 Access to the Service Park	20	Itineraries	
5.3 Facilities in the Service Park	21	Appendix 1 Itinerary	40-43
5.4 Environment, recycling & waste collection	22	Appendix 2 Reconnaissance Schedule	44
5.5 Service	22	Maps	
6. Two-way Radio	23	Appendix 3 Jyväskylä City	45
7. Tyres and Fuel	23	Appendix 4 Daymaps	46-49
7.1 Tyre Suppliers	23		
7.2 FIA Fuel and Fast Couplings	24		
7.3 Dispensing of FIA Fuel	24		
7.4 Dispensing of Pump Fuel	24		
8. Import of Vehicles and spare parts	24		
8.1 Competitors from the European Union	25		
8.2 Competitors from outside the EU	25		
9. Helicopters	25		
10. Hospitality arrangements	26		
10.1 Hospitality events	26		
10.2 Sales and VIP Bookings	27		

Sportity

For direct event information please download the Sportity app and insert this password:

WRCFIN26

Sportity app is available in

Available on the App Store | Get it on Google play

www.sportity.com



DURING SECTO RALLY FINLAND

**WE ARE GUESTS IN
OUR BEAUTIFUL
FINNISH FORESTS**



**PLEASE RESPECT THEM AND
DO NOT LITTER!**



[#SectoRallyFinland](#)

www.sectorallyfinland.fi

SUSTAINABILITY OVERVIEW

ver. 19032026

Secto Rally Finland's sustainability work is structured around the three pillars of Environmental, Social and Governance (ESG), which form the foundation of our Event Sustainability Management System (ESMS). Through this framework, environmental responsibility, social impact and good governance are systematically integrated into strategic planning, operational delivery and the long-term development of the event.

Our Sustainable Development Policy defines the commitments that guide this work. These commitments are translated into measurable objectives and key performance indicators within the ESMS. Progress is monitored regularly through structured risk and opportunity management, stakeholder engagement, and performance review. Management oversight ensures accountability, appropriate corrective actions and continuous improvement throughout the event lifecycle.

In addition to the FIA Environmental Accreditation Programme 3-Star certification, the organisation is working towards ISO 20121 certification, with the objective of achieving certification during 2027.

MISSION

Our mission is to create a rally experience that combines the passion for sport with the principles of sustainable development. The event brings joy to all, strengthens local communities and supports the regional economy, while promoting sustainable mobility, energy solutions and circularity. We are committed to ensuring safety, accessibility and equal participation, fostering well-being for all participants and stakeholders, and acting openly and responsibly in dialogue with our stakeholders.

STAKEHOLDER COMMITMENT & FURTHER INFORMATION

We expect all stakeholders, including teams, partners, suppliers, volunteers and spectators — to respect and follow the organiser's sustainability principles, operational guidelines and event requirements.

Further information regarding our ESG objectives, Mission Statement and Sustainable Development Policy is publicly available at: www.sectorallyfinland.fi/sustainability

Our ESG Priorities

1

Climate & Environmental Impact

We are committed to reducing the event's carbon footprint, improving energy efficiency and promoting sustainable mobility solutions. Circular practices guide waste management and material use, while protecting the natural environment of Central Finland remains an essential part of event planning and delivery.

2

Safe & Inclusive Rally Experience

We aim to provide a safe, accessible and welcoming experience for everyone involved in the event. The well-being of athletes, spectators, volunteers and staff is a priority, and we promote equal participation and positive engagement with local communities.

3

Transparency & Responsible Governance

We promote transparent communication and responsible decision-making across all aspects of the event. Clear accountability structures, regular reporting, sustainability communications and open dialogue with stakeholders support trust and long-term sustainability performance.

4

Continuous Development

We are committed to developing the event responsibly year after year. Sustainability considerations are integrated into future planning to strengthen environmental and social performance over time.



PREVIOUS WINNERS

1000 Lakes Rally	1951	Arvo Karlsson - Vilho Mattila	Austin Atlantic
1000 Lakes Rally	1952	Eino Elo - Kai Nuortila	Peugeot 203
1000 Lakes Rally	1953	Vilho Hietanen - Olof Hixen	Allard
1000 Lakes Rally	1954	Osmo Kalpala - Eino Kalpala	Dyna Panhard
1000 Lakes Rally	1955	Eino Elo - Kai Nuortila	Peugeot 403
1000 Lakes Rally	1956	Osmo Kalpala - Eino Kalpala	Donau
1000 Lakes Rally	1957	Erik Karlsson - Mario Pavoni	Saab 93
1000 Lakes Rally	1958	Osmo Kalpala - Eino Kalpala	Alfa Romeo Giulia Sport
1000 Lakes Rally	1959	Gunnar Callbo - Väinö Nurmimäe	Volvo PV 544 Sport
1000 Lakes Rally	1960	Carl-Otto Bremer - Juhani Lampi	Saab 96
1000 Lakes Rally	1961	Rauno Aaltonen - Väinö Nurmimäe	Mercedes Benz
1000 Lakes Rally	1962	Pauli Toivonen - Jaakko Kallio	Citroen
1000 Lakes Rally	1963	Simo Lampinen - Jyrki Ahava	Saab 96 Sport
1000 Lakes Rally	1964	Simo Lampinen - Jyrki Ahava	Saab 96 Sport
1000 Lakes Rally	1965	Timo Mäkinen - Pekka Keskitalo	BMC Cooper
1000 Lakes Rally	1966	Timo Mäkinen - Pekka Keskitalo	BMC Cooper
1000 Lakes Rally	1967	Timo Mäkinen - Pekka Keskitalo	BMC Cooper
1000 Lakes Rally	1968	Hannu Mikkola - Anssi Järvi	Ford Escort Twin Cam
1000 Lakes Rally	1969	Hannu Mikkola - Anssi Järvi	Ford Escort Twin Cam
1000 Lakes Rally	1970	Hannu Mikkola - Gunnar Palm	Ford Escort Twin Cam
1000 Lakes Rally	1971	Stig Blomqvist - Arne Hertz	Saab 96 V4
1000 Lakes Rally	1972	Simo Lampinen - Klaus Sohlberg	Saab 96 V4
1000 Lakes Rally	1973	Timo Mäkinen - Henry Liddon	Ford Escort RS 1600
1000 Lakes Rally	1974	Hannu Mikkola - John Davenport	Ford Escort RS 1600
1000 Lakes Rally	1975	Hannu Mikkola - Atso Aho	Toyota Corolla 1600
1000 Lakes Rally	1976	Märkku Alen - Ilkka Kivimäki	Fiat Abarth 131 Rally
1000 Lakes Rally	1977	Kyösti Hämmäläinen - Martti Tiukkänen	Ford Escort RS 1800
1000 Lakes Rally	1978	Märkku Alen - Ilkka Kivimäki	Fiat Abarth 131 Rally
1000 Lakes Rally	1979	Märkku Alen - Ilkka Kivimäki	Fiat Abarth 131 Rally
1000 Lakes Rally	1980	Märkku Alen - Ilkka Kivimäki	Fiat Abarth 131 Rally
1000 Lakes Rally	1981	Ari Vatanen - David Richards	Ford Escort RS
1000 Lakes Rally	1982	Hannu Mikkola - Arne Hertz	Audi Quattro
1000 Lakes Rally	1983	Hannu Mikkola - Arne Hertz	Audi Quattro
1000 Lakes Rally	1984	Ari Vatanen - Terry Harryman	Peugeot 205 Turbo 16
1000 Lakes Rally	1985	Timo Salonen - Seppo Harjanne	Peugeot 205 Turbo 16
1000 Lakes Rally	1986	Timo Salonen - Seppo Harjanne	Peugeot 205 Turbo 16
1000 Lakes Rally	1987	Märkku Alen - Ilkka Kivimäki	Lancia Delta HF 4WD
1000 Lakes Rally	1988	Märkku Alen - Ilkka Kivimäki	Lancia Delta HF Integrale



2019



2021



2022

PREVIOUS WINNERS

1000 Lakes Rally	1989	Mikael Ericsson - Claes Billstam	Mitsubishi Galant VR-4
1000 Lakes Rally	1990	Carlos Sainz - Luis Moya	Toyota Celica 2000 GT-Four
1000 Lakes Rally	1991	Juha Kankkunen - Juha Piironen	Lancia Delta HF Integrale 16V
1000 Lakes Rally	1992	Didier Auriol - Bernard Occell	Lancia Delta HF Integrale
1000 Lakes Rally	1993	Juha Kankkunen - Denis Giraudet	Toyota Celica Turbo 4WD
1000 Lakes Rally	1994	Tommi Mäkinen - Seppo Harjanne	Ford Escort RS Cosworth
1000 Lakes Rally	1995	Tommi Mäkinen - Seppo Harjanne	Mitsubishi Lancer Evolution
1000 Lakes Rally	1996	Tommi Mäkinen - Seppo Harjanne	Mitsubishi Lancer Evolution
Rally Finland	1997	Tommi Mäkinen - Seppo Harjanne	Mitsubishi Lancer Evolution
Rally Finland	1998	Tommi Mäkinen - Risto Mannisenmäki	Mitsubishi Lancer Evolution
Rally Finland	1999	Juha Kankkunen - Juha Repo	Subaru Impreza WRC
Rally Finland	2000	Marcus Grönholm - Timo Rautiainen	Peugeot 206 WRC
Rally Finland	2001	Marcus Grönholm - Timo Rautiainen	Peugeot 206 WRC
Rally Finland	2002	Marcus Grönholm - Timo Rautiainen	Peugeot 206 WRC
Rally Finland	2003	Markko Märtin - Michael Park	Ford Focus WRC
Rally Finland	2004	Marcus Grönholm - Timo Rautiainen	Peugeot 307 WRC
Rally Finland	2005	Marcus Grönholm - Timo Rautiainen	Peugeot 307 WRC
Rally Finland	2006	Marcus Grönholm - Timo Rautiainen	Ford Focus WRC
Rally Finland	2007	Marcus Grönholm - Timo Rautiainen	Ford Focus WRC
Rally Finland	2008	Sebastien Loeb - Daniel Elena	Citroen C4
Rally Finland	2009	Mikko Hirvonen - Jarmo Lehtinen	Ford Focus WRC
Rally Finland	2010	Jari-Matti Latvala - Miikka Anttila	Ford Focus WRC
Rally Finland	2011	Sebastien Loeb - Daniel Elena	Citroen DS3 WRC
Rally Finland	2012	Sebastien Loeb - Daniel Elena	Citroen DS3 WRC
Rally Finland	2013	Sebastien Ogier - Julien Ingrassia	VW Polo WRC
Rally Finland	2014	Jari-Matti Latvala - Miikka Anttila	VW Polo WRC
Rally Finland	2015	Jari-Matti Latvala - Miikka Anttila	VW Polo WRC
Rally Finland	2016	Kris Meeke - Paul Nagle	Citroen DS3 WRC
Rally Finland	2017	Esapekka Lappi - Janne Ferm	Toyota Yaris WRC
Rally Finland	2018	Ott Tänak - Martin Järveoja	Toyota Yaris WRC
Rally Finland	2019	Ott Tänak - Martin Järveoja	Toyota Yaris WRC
Rally Finland	2020	event cancelled due to COVID-19	
Rally Finland	2021	Elfyn Evans - Scott Martin	Toyota Yaris WRC
Rally Finland	2022	Ott Tänak - Martin Järveoja	Hyundai i20 N Rally1 HYBRID
Rally Finland	2023	Elfyn Evans - Scott Martin	Toyota GR YARIS Rally1 HYBRID
Rally Finland	2024	Sebastien Ogier - Vincent Landais	Toyota GR YARIS Rally1 HYBRID
Rally Finland	2025	Kalle Rovanperä - Jonne Halttunen	Toyota GR Yaris Rally1



2023



2024







2025

2. CONTACT DETAILS

2.1 PERMANENT CONTACT DETAILS

AKK Sports Ltd.
Secto Rally Finland
P.O. Box 19
FI-01301 Vantaa, Finland

www.sectorallyfinland.fi
rally@autourheilu.fi

 facebook.com/rallyfinland
 [@RallyFinland](https://twitter.com/RallyFinland)
 [rallyfinland](https://www.instagram.com/rallyfinland)
 [Rally Finland](https://www.youtube.com/RallyFinland)

Courier / visitors' address:

Kellokukantie 7
FI-01300 Vantaa

KEY OFFICIALS:

Markus Häkkinen

Chief Financial Officer

MOBILE: +358 40 551 0289
E-MAIL: markus.hakkinen@autourheilu.fi

Tiina Lehmonen

Promoter

MOBILE: +358 400 546 410
E-MAIL: tiina.lehmonen@autourheilu.fi

Kai Tarkiainen

Clerk of the Course

MOBILE: +358 40 846 6766
E-MAIL: kai.tarkiainen@autourheilu.fi

Viivi Firat

Secretary of the Rally

MOBILE: +358 50 330 5212
E-MAIL: viivi.firat@autourheilu.fi

Kari Erola

Chief Scrutineer

MOBILE: +358 43 824 4053
E-MAIL: kari.erola@gmail.com

Lenni Purokuru

VIP sales

MOBILE: +358 50 340 8024
E-MAIL: lenni.purokuru@autourheilu.fi

Paula Paappanen

Commercial Director

MOBILE: +358 50 473 7741
E-MAIL: paula.paappanen@autourheilu.fi

Kari Nuutinen

Deputy Clerk of the Course

MOBILE: +358 40 520 9990
E-MAIL: kari.nuutinen@autourheilu.fi

Juha Hautsalo

Service Park Manager

MOBILE: +358 40 502 8677
E-MAIL: juha.hautsalo@autourheilu.fi

Mikko Huuska

Project Manager

MOBILE: +358 40 547 8775
E-MAIL: mikko.huuska@autourheilu.fi

Jaana Kiilamaa

VIP sales

MOBILE: +358 50 372 5620
E-MAIL: ext.jaana.kiilamaa@autourheilu.fi

2.2 RALLY HQ CONTACT DETAILS

Contact details for the Rally HQ for 13 July - 4 August 2026 will be:

AKK Sports Ltd.	General information:	rally@autourheilu.fi
Secto Rally Finland	Website:	www.sectorallyfinland.fi
Jyväskylä Paviljonki	Competitor information:	viivi.firat@autourheilu.fi
Lutakonaukio 12	Entry form:	FIA entry system, see Art. 4.
FI-40101 Jyväskylä, Finland		

The Official Notice Board will be the Digital Notice Board (DNB), available in the Sportity App and published also on the rally website at www.sectorallyfinland.fi.

Sportity App is downloadable for iOS devices on Appstore and for Android devices on Google Play. Channel Password is **WRCFIN26**.

Rally Office Opening hours from Monday 27 July to Sunday 2 August 2026:

Monday 27 July	16.00-21.00
Tuesday 28 July	07.00-20.00
Wednesday 29 July	07.00-20.00
Thursday 30 July	08.00-22.30
Friday 31 July	07.30-22.30
Saturday 1 August	07.00-22.30
Sunday 2 August	08.00-19.00



2.3 MEDIA CONTACT DETAILS

Sven Good

FIA WRC Media Delegate

MOBILE: +44 7780 949 176
E-MAIL: sgood@fia.com

Miguel Fonseca

WRC Promoter Accreditation Manager

MOBILE: +49 162 198 5064
E-MAIL: miguel.fonseca@wrc.com

Anne Järvinen

Accreditations

MOBILE: +358 41 507 2527
E-MAIL: accreditation@autourheilu.fi

Timo Korkalainen

National Press Officer

MOBILE: +358 40 502 4205
E-MAIL: ext.timo.korkalainen@autourheilu.fi

Terhi Heloaho

Communications Manager

MOBILE: +358 40 682 2662
E-MAIL: terhi.heloaho@autourheilu.fi

Media Centre opening hours:

Tuesday 29 July	14.00-18.00
Wednesday 30 July	09.00-22.00
Thursday 31 July	08.00-24.00
Friday 1 August	07.00-24.00
Saturday 2 August	07.00-23.00
Sunday 3 August	07.00-20.00

3. PROGRAMME & CRITICAL DEADLINES

3.1 SCHEDULE BEFORE THE RALLY WEEK

Thursday 19 March 2026		
	Rally Guide 1 published and Digital Notice Board available (DNB)	Website/Sportity
	Opening date for Helicopter registration	Online form
Thursday 21 May 2026		
	Supplementary Regulations and Entry Form published	Website
	Opening date for Entries	FIA Website
Sunday 31 May 2026		
	Opening date for online application for International Media accreditation	Online form (FIA)
	Opening date for online application for National Media accreditation	Online form
Tuesday 30 June 2026 at 23.59 (22.59 CET)		
23.59	Closing date for entries	FIA Website
23.59	Closing date for applications for reconnaissance only	Online form
Thursday 2 July 2026 at 23.59 (22.59 CET)		
	Closing date for tyre orders	PDF form
	Closing date for FIA fuel orders	Online
	Rally Guide 2, Road Book and Route Map available	Website
Friday 3 July 2026		
	Publication of Entry List	Website
	All service area requests must reach the organiser	Online form
	Closing date for radio license application	TRAFICOM website
Wednesday 8 July 2026		
	Rally Car details for Tax Office forms must reach the organiser	Online form
Thursday 9 July 2026		
	Closing date for National Media accreditation (all, except for national news and photo agencies)	Online form
Thursday 16 July 2026		
	Publication of Media Safety Book	Website
	Closing date for International Media accreditation (news and photo agencies, print and web media)	FIA Website
	Last day for helicopter registrations for the lower pilots' pack price	Online form

Monday 20 July 2026		
	Closing date for Onboard Camera accreditation (FIA WRC, Art. 18.1.)	Online form
Wednesday 22 July 2026 (latest)		
21.00	Closing date for Shakedown Remote Service registration	Online form
23.59	Administrative Documents must reach the organiser	Online form
Thursday 23 July 2026		
	Service Park opens for Manufacturers (on request only)	Service Park
Sunday 26 July 2026 (latest)		
16.00 latest	Administrative Checks fully completed (all competitors)	Online form
21.00 latest	Reconnaissance registration submitted (non-priority drivers)	Online form
21.00 latest	Shakedown entry form must reach the organiser	Online form
21.00 latest	Appointment reserved for collection of materials	Online

3.2 SCHEDULE DURING THE RALLY WEEK

		Rally Office, at Rally HQ	Media Accreditation, at Hotel Alexandra	Media Centre, at Rally HQ
Monday	27 July	16.00-21.00		
Tuesday	28 July	07.00-20.00	14.00-20.00	14.00-18.00
Wednesday	29 July	07.00-20.00	09.00-20.00	09.00-22.00
Thursday	30 July	08.00-22.30	08.00-18.00	08.00-24.00
Friday	31 July	07.30-22.30	Upon request only to accreditation@ autourheilu.fi	07.00-24.00
Saturday	1 August	07.00-22.30		07.00-23.00
Sunday	2 August	08.00-19.00		07.00-20.00

Monday 27 July 2026		
9.00	Service Park opens for all other competitors	Service Park
16.00-21.00	Collection of documents and materials (by appointment)	Rally Office
16.00-21.00	Collection of individual event access codes (and smartphones, if opted) for reconnaissance tracking application RS Lite	SAS Workshop in SP
17.00	Helicopter pilots' briefing	Online meeting
21.00	Deadline for all drivers and Co-Drivers to have completed the FIA eLearning course on the SAS Tracking System	
Tuesday 28 July 2026		
07.00-17.00	Day 1 of reconnaissance, Group A (details in Appendix 2)	
08.30-18.30	Day 1 of reconnaissance, Group B (details in Appendix 2)	
16.00-20.00	Collection of FIA Safety Tracking Device	SAS Workshop in SP
19.30	Drivers' Safety Briefing (mandatory for all drivers and co-drivers participating in their first event in 2026)	Rally HQ
20.00	WRC Promoter Driver and Co-Driver photo shoot (mandatory for all Priority crews participating in their first WRC event in 2026; helmets and overalls required)	Rally HQ

Wednesday 29 July 2026		
07.00-15.30	Day 2 of reconnaissance, Group A (details in Appendix 2)	
08.30-17.00	Day 2 of reconnaissance, Group B (details in Appendix 2)	
12.00-14.00	Collection of FIA Safety Tracking Device	SAS Workshop in SP
14.00	Technical sealing, WRC Manufacturers	Service Park
14.00-	Scrutineering, sealing and marking (others)	Gradia, Jyväskylä
15.00	All competitors must have completed service set-up, Service Park opens for spectators	Service Park
15.00	Publication of Start List for Ceremonial Start	DNB
16.00	Team Managers' Meeting (by invitation only)	Rally HQ
16.30	Mandatory Tabard Media Safety Briefing	Rally HQ
17.00	Sealing and scrutineering, JWRC	Service Park
17.00-20.00	Rally Parade and Ceremonial Start A more detailed schedule TBA, individual driver involvement approx. 1hour	Jyväskylä City / Service Park
18:00	Publication of Start List for Shakedown (P1 and requested drivers)	DNB
Thursday 30 July 2026		
08.00-08.30	Scales available for Manufacturers, schedule in Bulletin	Service Park
08.30-09.00	Scales available for Junior WRC cars	Service Park
09.01-10.00	Shakedown for P1 and invited drivers	Ruuhimäki
10.01-11.00	Shakedown for all P1 and P2 drivers	Ruuhimäki
11.01-13.00	Shakedown for P3, P4 and non-priority drivers	Ruuhimäki
12.00-13.30	FIA WRC Media Pen for P1/P2 drivers and P1 Team Principals	Service Park
14.15-14.45	Meet the Crews for invited crews and team representatives	Service Park
15.00-16.00	Day 3 of reconnaissance, Group B (details in Appendix 2)	Harju
16.00-17.00	Day 3 of reconnaissance, Group A (details in Appendix 2)	Harju
16.00	Publication of start list for Section 1	DNB
16.00	Helicopter pilots' briefing	TBA
16.00-19.00	Return of reconnaissance smartphones (if rented from SAS)	SAS Workshop in SP
18.45	Start of the rally	Service Park
19.55	Overnight Parc Fermé	Rally HQ
22.00	Publication of start list for Section 2	DNB
Friday 31 July 2026		
07.40	Start Section 2	Service Park
	Meet the Crews for P1 team representatives, the top 3 P1 crews and top 3 P2 crews during evening service	
20.25	Overnight Parc Fermé	Rally HQ
22.00	Publication of start list for Section 4	DNB

Saturday 1 August 2026		
07.15	Start Section 4	Service Park
	Meet the Crews for P1 team representatives, the top 3 P1 crews and top 3 P2 crews during evening service	
21.00	Overnight Parc Fermé	Rally HQ
22.00	Publication of start list for Section 6	DNB
Sunday 2 August 2026		
09.25	Start Section 6	Service Park
13.15	Start of Wolf Power Stage	Himos-Jämsä
14.15	Podium -Prize-giving and FIA Post-Event Press Conference	Himos-Jämsä
	Finish of the Rally	Parc Fermé / SP
16.15	Final scrutineering	Gradia, Jyväskylä
17.45	Publication of provisional classification	DNB
	Return of the FIA Safety Emergency Console within 30min after the opening of Parc Fermé	SAS Workshop in SP
20.15	All cars must be removed from the final Parc Fermé (Provided that the Stewards have authorised the opening of the Parc Fermé)	Rally HQ
22.00	All indoor service areas must be cleaned and empty under penalty of a fee of 500€/h charged by the Organiser	Service Park
Wednesday 5 August 2026		
08.00	Outdoor service areas must be cleaned and empty under penalty of a fee of 500€/h charged by the Organiser	Service Park

4. ENTRY DETAILS

4.1 FIA TITLES FOR WHICH THE RALLY COUNTS

FIA World Rally Championship for Drivers and Co-Drivers
FIA World Rally Championship for Manufacturers
FIA World Rally Championship for Teams
FIA WRC2 Championship for Drivers and Co-Drivers
FIA WRC2 Championship for Teams
FIA WRC2 Challenger Championship for Drivers and Co-Drivers
FIA WRC3 Championship for Drivers and Co-Drivers
FIA Junior WRC Championship for Drivers and Co-Drivers
FIA WRC Masters Cup for Drivers and Co-Drivers

4.2 CRITERIA FOR ACCEPTANCE OF ENTRIES

Any non-priority driver wishing to take part in Classes RC1-RC5 of Secto Rally Finland 2026 must fill in the electronic entry form published on the FIA website (<http://registrations.fia.com/wrcfin>) at the same time with Supplementary Regulations. Please note that as the FIA system requires a user ID and a password to access the entry system, you cannot leave the entry procedure to the last minute but must give time for the FIA to open you the necessary user account. The user account application can be found through a link from the registration page as given above.

Competitors in the FIA Manufacturers/Teams, WRC2 and WRC3 Championships, who wish to enter our event to collect points in their respective championships must use the standard FIA electronic entry form available at <http://registrations.fia.com>. Any driver in the WRC2 Championship wishing to enter Secto Rally Finland, but not wishing to collect points for their championship, must use the standard FIA entry form as for all point collecting events. However, they must tick the relevant box to express their wish not to collect points in that particular event. Any driver in the WRC3 Championship wishing to enter Secto Rally Finland, but not wishing to collect points for their championship, must use the non-priority entry form as detailed above.

The entry forms must be sent before **Tuesday 30 June 2026** at 23.59 Finnish time (22.59 CET).

By sending an electronic form, the competitor undertakes to abide by the rules and regulations of the competition. Each competitor is required to submit a scanned copy of their signed FIA entry form in the Online Forms of the Administrative Checks.

To be accepted, competitors must send proof of payment of the entry fee by e-mail with the VAT-number of the company (if paid by such) to Rally Secretary viivi.firat@autourheilu.fi by the close of entries, in any of the above cases (a scanned copy of the bank transfer will do). Competitors and drivers wishing to enter international competitions organised abroad, may only do so with the approval of their own ASN.

4.3 ENTRY FEES

4.3.1 MANUFACTURERS ENTERED IN THE FIA WORLD RALLY CHAMPIONSHIP AND WRC TEAMS

As per 2026 FIA WRC Sporting Regulations Appendix VI, with local VAT added (25.5%). Details of the payment will be given in Supplementary Regulations.

4.3.2 SUPPORT CHAMPIONSHIPS FIA WRC2, WRC3 AND JUNIOR WRC

As per 2026 FIA WRC Sporting Regulations Appendix VI, with local VAT added (25.5%). Details of the payment will be given in Supplementary Regulations. For Junior WRC, as agreed between organiser and JWRC Promoter.

4.3.3 FURTHER RC1 CARS

As per 2026 FIA WRC Sporting Regulations Appendix VI, with local VAT added (25.5%). Details of the payment will be given in Supplementary Regulations.

4.3.4 OTHER ENTRIES BY LEGAL ENTITIES (CLASSES RC2-RC5 AND RGT)

This category includes teams entered by any legal entity (with an FIA International Competitor's licence).

Entry fee for one car 8 000 € + 25.5% VAT = 10 040,00 €

4.3.5 PRIVATE ENTRIES (CLASSES RC2-RC5, RGT)

Entry fee for one car (competitor's licence in the name of the driver or the co-driver):

Service Park area 8 x 8m	4 000 € + 25.5% VAT = 5 020,00 €
Service Park area 10 x 10m	5 000 € + 25.5% VAT = 6 275,00 €
Service Park area 10 x 15m	6 500 € + 25.5% VAT = 8 157,50 €

4.3.6 DRIVERS WITH AN AKK-MOTORSPORT LICENSE, REGISTERED TO THE FINNISH RALLY CHAMPIONSHIP

Entry fee for one car (private entrant, SP area 8 x 8m):	3 500 € + 25.5% VAT = 4 392,50 €
Entry fee for one car (private entrant, SP area 10 x 10m):	4 500 € + 25.5% VAT = 5 647,50 €

4.3.7 RECONNAISSANCE ONLY

Fee for reconnaissance only 1 100 € + 25.5% VAT = 1 380,50 €

4.3.8 VAT PAYMENTS FOR ENTRY FEES

The VAT payments as given above are subject to Finnish tax laws and its interpretation by the Tax Office. Basic guidelines are as follows:

- a) Foreign private entries (entrant driver/co-driver): VAT must be paid as given above.
- b) Foreign legal entries:
 - Legal entities, with a valid VAT number, from the European Union entering cars to the event will account for VAT under the reverse charge mechanism, thus the entry fee can be paid to us with 0% VAT.
 - Legal entities from outside the European Union are exempt from VAT payments.
- c) All Finnish competitors: VAT must be paid as above.

Responsibility for correct payment of all taxes lies solely on the competitor, and no liability can be passed to the organiser.

4.4 CONTENTS OF THE VARIOUS ENTRY PACKAGES

4.4.1 PACKAGES FOR THE FIA REGISTERED COMPETITORS

Contents of entry packages for Manufacturers, WRC Teams, RC1 cars and Support Championship entries (WRC2 and WRC3): See Appendix VI of FIA WRC 2026 Regulations. For Junior WRC, as agreed between organiser and JWRC Promoter.

4.4.2 PACKAGES FOR OTHER COMPETITORS

PRODUCT	LEGAL ENTRANT	PRIVATE ENTRANT A / B / C*
VEHICLE PLATES		
Service Plates	2	1 / 1 / 2
Auxiliary Plates	2	1 / 1 / 2 **
Guest Plate	2	0
PASSES		
Team Passes	8	6 / 6 / 8
Guest Passes	2	0
ADMINISTRATION		
Supplementary Regulations	Only available at event website.	
Route Maps	4	2 / 2 / 4
Road Books	2	2
Official Programmes	6	2 / 2 / 4
Rally Guide 1	Only available at event website.	
Rally Guide 2	Only available at event website.	
Results	Only available at event website.	
SERVICE PARK AREA	10x15	8x8 / 10x10 / 10x15

Private Entrant A / B / C*: A = 8x8 area, B = 10x10 area, C = 10x15 area

**No auxiliary plates included in the entry fees as per Art. 4.3.6

Delivery of the above listed printed materials will be at the material collection. Road Books, maps etc. available online as per Art. 3. Programme.

Cost for additional service space in Service Park area is 55 € + VAT 25.5% /m² = 69,00 €/m².

All additional space requests are subject to availability and organiser agreement. The organiser cannot guarantee any service space exceeding those given above and in the FIA WRC Sporting Regulations, Appendix VI. Requests received after 3rd of July 2026 will only be considered for a doubled price, if at all. Also, see Art. 5 Service Park.

5. SERVICE PARK

5.1 LOCATION

GPS Coordinates: North 62° 14.271' East 25° 45.352'
Address: Lutakonaukio 12, 40100 Jyväskylä, Finland

As previous years, the Service Park is located in the area around the Jyväskylä Paviljonki Rally HQ and Jyväskylä Harbour. Manufacturers entered to the FIA WRC will have their designated areas in the Service Park according to the Championship Regulations. Auxiliary parking is in the parking garage within Service Park. Due to the restricted space in the Service Park, the number of auxiliary plates for privateers will be limited.

Support Championship drivers and private drivers will find themselves inside the exhibition halls of Paviljonki Rally HQ. We do not encourage the use of semi-trailers as service vehicles (as they do not fit into all service areas as given in FIA WRC, Appendix VI), but do understand that many competitors have these. We urge all competitors with such set-up to be in active contact with our Service Park management as early as possible, and to take into consideration that the tractors will NOT be allowed to stay with the trailer! All payments for extra space as per Art. 4.4.2 apply and are payable prior to entering the service area.

Service Park layout will be published in Rally Guide 2.

Final layout with competitor locations will be published on the event website latest on Wednesday 22 July 2026.

5.2 ACCESS TO THE SERVICE PARK

Manufacturers can access the Service Park as per individual agreements with the organiser.

Manufacturers, WRC Teams and the nominated Tyre Supplier can access the area earliest on Thursday 23 July 2026. All other teams and competitors will have access on Monday 27 July 2026 at 09.00. Set-up for all competitors must be finished by Wednesday 29 July 2026 at 15.00 at latest, as the area will then open to the public.

Rally2 and Rally3 Manufacturers' Support Trucks

Rally2 and Rally3 manufacturers may require an area inside the service park for one (1) service support truck, to help their customers with spare parts and other assistance. A fee of 2 900 Euros plus VAT (25.5%) will be charged for this area, which size is 5 x 16 metres (semi-trailer plus tractor unit). Any additional services such as electricity, toilets etc. will be charged separately, all subject to availability.

Please note that the service park will be used for the last time for the 45-minute service on Saturday evening, after which the teams may start to rig down their service bays on Sunday morning after the last car has left the parc fermé (TC 18D). All indoor areas must be cleaned and empty by 22.00 on Sunday 2 August, outside areas by 08.00 on Wednesday 5 August. More details given in Rally Guide 2. For any delay in emptying these areas (without any prior agreement), there will be a penalty of 500 €/hour, payable to the organiser.

All parties are kindly asked to respect these opening times. As there are other events in the area in the weeks leading up to our rally, please check carefully with Service Park Manager before trying to access the area before the times given. Manufacturers or Tyre Supplier wishing to bring equipment or sea containers

to the Service Park area before the given opening time must inform the organiser thereof. If the organiser has not received such notification, we cannot guarantee any access to the area. All costs of moving the equipment either within or from outside the Service Park to its final position will be borne by the relevant owner of the equipment.

Please note that it is absolutely forbidden to drive any anchors into the ground at any location inside the Service Park without the prior written consent of organiser's Service Park Manager. Competitors are reminded to prepare for fastening all structures with concrete ballast or equivalent. A list of minimum ballast for various types and sizes of temporary structures, as required by Finnish health and safety authorities, can be obtained from Service Park Manager, who may also be able to help you in sourcing such ballast on location (if contacted early). Should the given prescriptions not have been followed, the authorities may require the structures to be taken down.

Competitors are kindly asked to remind all their team staff to always carry their Team Passes, as the organiser will be collecting an admission fee into the service park from anyone without a valid pass, and there will be no access to the area without a valid pass at any time.

Teams located inside the exhibition halls must have at least two 6 kg fire-extinguishers ready and available at their service area at all times. A special location will be appointed outside the halls for any work which may cause a fire hazard such as welding. Minor fire work such as using angle grinders is allowed. **The storage of gas bottles or indeed the use of them for any purpose inside the halls is strictly forbidden. Should you carry any with you on arrival, they must be left to locked storage area outside the buildings.**

5.3 FACILITIES IN THE SERVICE PARK

The organiser will be offering the following facilities in the Service Park:

- waste collection for mixed waste, oil, paper, bio waste, metal, glass, cardboard, plastic packaging, mixed oil
- toilet facilities (these exist both in the outside area as well as inside the HQ building)
- portable toilets at team area (as per FIA WRC Regulations, Appendix VI)
- WLAN connection (cable connection available for Manufacturers by request)
- general security in the service park area
- water (direct pipelines to Manufacturers plus common sources for others)
- car wash before the TC IN
- facilities to wash rims and other parts

The organiser can contract various additional services for the Manufacturers and Tyre Supplier. The following can be ordered through the organiser:

- extra security services
- additional portable toilets to your team area (only outside area)
- portable waste water tanks
- waste water tank and motorhome septic tank emptying (the content must be declared)
- electricity
- forklift rental (third party agreements directly with customer)
- waste management in your team area

Electronic Extra Facilities order form will be published on event website at a later date.

5.4 ENVIRONMENT, RECYCLING AND WASTE COLLECTION

All competitors and teams are kindly asked to use the recycling areas arranged at the Service Park. The organiser provides waste collection services in the Service Park according to the requirements of local authorities of environment and waste collection.

NOTE! All waste must be sorted according to the type of waste and organiser will give detailed information about this closer to the event. All waste collection facilities in Service Park are provided to a common use for all and it is forbidden to change their places. If any additional waste bins are needed for team area's own use, they can be ordered through the organiser. Also in those cases, sorting of waste according to the waste type is required. **Penalties payable to the organiser will apply!**

It is absolutely forbidden to spill any oil or wastewater on the ground in the Service Park (ground sheets must be used at all times)! More information on oil spill protection and treatment will be given in Supplementary Regulations and Rally Guide 2.

Before leaving the Service Park after the rally (or possible retirement) each team must report to the Service Park management, who will check that their allocated area has been left in a good condition.

5.5 SERVICE (FIA WRC, ART. 55-59)

There will be a 15-minute service after SSS 1 Harju 1 on Thursday evening. It will be preceded by a 10-minute technical zone. More information given in the Supplementary Regulations.

For the duration of the rally, there will be NO service in the morning between the overnight parc fermé and the first special stage of the day.

On Friday and Saturday, there will be a 30-minute mid-day service in the Service Park Paviljonki (no flexi), preceded by a regroup.

The 45-minute flexi-service will be run according to FIA WRC, Art. 59. This means that the cars of P1 and P4 drivers will be driven directly from the 10-minute Technical Zone to the individual service bays, where the actual start of service will be marked on the timecard.

For all other competitors, the car may be left in the parc fermé after the 10-minute Technical Zone and taken later for the 45-minute service, or driven directly to service, when the service time starts from parc fermé OUT time control.

On arrival to their service bays, all drivers will be asked to be accessible to the public for autographs and photos.

For any repairs prior to a re-start (i.e. after a retirement), please see the prescriptions of FIA WRC, Art. 55.

There will be no remote service zones or tyre-fitting zones outside the main service park during the rally.

6. TWO-WAY RADIO

Radio equipment and frequencies

The Finnish Transport and Communications Agency (TRAFICOM) regulates the use of radio frequencies in Finland. Based on submitted applications Traficom issues radio licences for users of radio transmitters to ensure trouble-free utilisation of the radio spectrum.

Applications can be submitted by filling in the form found with the following link no later than 3 July 2026: <https://eservices.traficom.fi/ContactForms/form/radiolupien-yhteydenottolomake?langid=en>

Some radio transmitters can be used on licence-exempt basis depending on their operating frequency and application. Please refer to Traficom Regulation 15 - <https://www.traficom.fi/en/regulations/regulation-15-collective-frequencies-licence-exempt-radio-transmitters-and-their-use>.

The applicable frequency bands for wireless cameras, video links and microphones have been collected to page <https://www.traficom.fi/en/communications/communications-networks/wireless-cameras-video-links-and-microphones>.

7. TYRES AND FUEL

7.1 TYRE SUPPLIERS

The FIA has nominated the following single tyre supplier for 2026 World Rally Championship:

Hankook Tyre & Technology Co. Ltd.

Bundang-gu, Seongnam-si, Gyeonggi-do
13494, Korea
<https://www.hankooktire.com/global/en/home.html>

Mr. Manfred Sandbichler

MOBILE: +49 15116222126
E-MAIL: racing@hankookn.com

Mr. Steven Cho

MOBILE: +82 1020032787
E-MAIL: steven@hankook-competition.com

Non-priority drivers' attention is drawn to the FIA WRC Sporting Regulations, Art. 13.2 which states that all drivers with a 4WD car must use tyres from the nominated tyre supplier, as defined in the Supplementary Regulations of the rally. On the other hand, Art. 13.3 allows the use of any make of tyres for non-priority drivers in 2WD cars, provided they all come from the same tyre supplier, as recorded at the pre-rally scrutineering. For more details, contact the organiser.

7.2 FIA FUEL AND FAST COUPLINGS

Refuelling will be located in Service Park Paviljonki (starting from Shakedown), as well as in Konnevesi (Sections 2 and 3), Länkipohja (Sections 4 and 5) and Himos (Section 7). The competitors need to pay special attention to the various refuel locations on the itinerary when making their service plans. More information to follow in Supplementary Regulations and Rally Guide 2.

Cars driven by Priority drivers must be fitted with FIA fuel sample couplings for taking fuel samples (see FIA Technical List No. 5). All cars must be fitted with FIA-specified refuel couplings (manufacturer: Stäubli, model: SPT 12.7658 L/JV). Also, see FIA WRC, Art. 62.

SAFETY FUEL TANKS

Competitors' attention is drawn to the **recently updated** prescriptions of the FIA ISC, Appendix J, Art. 253-14, which states that all cars in groups N and A must be fitted with an FIA approved safety fuel tank. For car in other groups, please see technical regulations of the group concerned in addition to this Art. 253-14. Cars homologated under Rally5-Kit regulations may use their original, unmodified tanks.

7.3 DISPENSING OF FIA FUEL

For sporting, environmental and safety reasons, during the rally the fuel must be dispensed from a single source. Thus, all cars driven by a priority driver must use this centralised refuel service (FIA WRC, Art. 62.1.1).

As per FIA WRC regulations Art. 62.2.1, **no later than 4 weeks prior to the event (see Art. 3)**, the competitors must notify their fuel requirements to the sole supplier as nominated by the FIA (Total Energies) with a form published on event website together with the Supplementary Regulations. For any questions, please contact totalenergies-wrc@sodifuel.com.

The price of the fuel, including the refuel services at the site of the event, will be € 9.95 plus VAT (TBC in the Supplementary Regulations of the rally).

7.4 DISPENSING OF PUMP FUEL

The use of pump fuel is under discussion and will be feasible on most days. There may be need for alternative arrangements on Sunday, due to lack of suitable petrol stations on the route of the rally. In case you are planning to run on pump fuel, **contact the organiser immediately to discuss**. More information on the use of pump fuel according to FIA WRC, Art. 62.1.2 for non-priority drivers will be given in the Supplementary Regulations of the rally.

8. IMPORT OF VEHICLES AND SPARE PARTS

All rally cars imported to Finland must be declared to the **Finnish Tax Office**. In order to assist our foreign competitors to make this declaration of temporary use of vehicle in motorsport purposes, an online form will be published to gather the necessary information together with the publication of Rally Guide 2. This form must be filled in by the date given in Art. 3 Programme.

8.1 COMPETITORS FROM THE EUROPEAN UNION

Competitors coming from the European Union do not need to make any special clearance for **Finnish Customs**. They may use any vehicle in Finland for up to 6 months without clearing it, provided that the vehicle is not brought to Finland with the intention of selling it. All vehicles need to have a valid traffic insurance. Tyres and spare parts can also be imported without clearance.

It is always good to have a list of tools and equipment you bring into the country, in case you will be asked to prove what you had with you on the way in.

8.2 COMPETITORS FROM OUTSIDE THE EUROPEAN UNION

Competitors coming from outside the European Union will have to report at the **Finnish Customs** on their way in. Please prepare a list of all the tools and equipment you are bringing with you. This list will be stamped at the customs and they may collect a security (the amount is negotiable). Tyres are under customs as they are non-durable goods. The customs payment will be returned if the used tyres are exported from the country on the way out, as well as the security, if all equipment is exported.

Use the form 613e Temporary Admission, which can be found in <https://tulli.fi/en/about-us/materials/forms/forms-for-special-procedures>. **All competitors coming from outside EU countries must report at the Finnish Customs!**

For more accurate information, please contact the Finnish Customs Information Service Telephone +358 295 5202 or yritysneuvonta@tulli.fi.

9. HELICOPTERS

As in previous years, the organiser will be working in close co-operation with the Finnish Civil Aviation Authorities. This means all pilots using the helipads provided by the organiser must attend the pilots' briefing and must acquire the organiser's pilots' pack, including all GPS coordinates, aviation / rally maps, list of helicopters and pilots and the necessary ID plates for the helicopter. Price for this package will be

for registrations made on the 16th of July at the latest 1 999 Euros plus VAT 25.5%

for registrations made after 16th of July 2 999 Euros plus VAT 25.5%

Please note that the organiser may limit the maximum number of helicopters allowed to the event at their discretion to a maximum of 40 helicopters. Should this number be exceeded, priority will be given to commercial operators on 'first come, first serve' basis.

Drones will not be allowed in the event airspace, exceptions for organiser and official drones, such as Police or Rescue drones.

Detailed information about pilot's briefing will be given in Rally Guide 2. There will be an Online briefing on Monday 27th July 2026 at 17.00 and another in Jyväskylä (location to be confirmed) on Thursday 30 July 2026 at 16.00. The operators must be ready to present all necessary documentation at the briefing, as well as to send copies of the required pilots'/operators' licenses already at the time of registration. Any late arrivals must be informed to organiser well in advance. More information will be given in Rally Guide 2.

Details of the collection of all materials included in the pilot's pack will be given in Online briefing.

The Day Park in Kuokkala or Jyväskylä Airport must be used for any flights to Rally HQ.

All pilots wishing to use the official helipads of the rally, or otherwise fly in the airspace temporarily restricted for the rally as per Traficom Supplement, must register to the organiser using the online registration form, the link for which can be found from our event website.

A temporary restricted airspace will be established around the stages and the Service Park during the rally, with access allowed with organiser's permission only! There may be restrictions concerning aircraft type used or experience level of the pilot. The organiser may also restrict access to selected helipads according to the MTOW of the aircraft.

Submission of helicopter registration forms will be as given above with the pricing options. No new registrations will be accepted after 23rd July, changes are possible. The helicopter packages will be invoiced according to registration and must be paid at the latest on 23 July 2026. All private and exclusive landing pads must be informed to the organiser by Thursday 9 July 2026 (rally@autourheilu.fi).

In Finland, you must always have the landowner's permission to land. Should any helicopter land without such permission, the landowner may charge whichever sum he may see suitable. The organiser is aiming to set up at least two landing zones on each special stage, in connection with our spectator areas. The pilot is always responsible for all operations and any damages caused to third parties must be negotiated directly between the parties involved.

Flight safety rules will be published together with the In-Flight Guide, as a separate document. The AirBoss system will continue to guide pilots throughout the rally at the most frequently used helipads.

10. HOSPITALITY

10.1 HOSPITALITY EVENTS

Secto Rally Finland offers official hospitality experiences for guests, partners and rally fans both at the Harju Super Special Stage in Jyväskylä city centre and at selected forest special stages.

These hospitality events provide guests with premium rally viewing locations, high-quality services, and catering in dedicated VIP areas.

Further information on hospitality packages, schedules and facilities is available on the event website:

www.sectorallyfinland.fi/vip

Official travel packages for Secto Rally Finland are offered by the event's Official Travel Partner Elämys Group. These packages may include services such as transportation, accommodation and VIP tickets.

For further information please, see Travel packages under Art 11.2.

HARJU HOSPITALITY EVENTS

Different Harju hospitality options are available on Thursday 30th July and Friday 31st July.

All Harju VIP packages include entry to the special stage as well as the following services:

- Stylish and licensed VIP area
- Quality catering
- Unobstructed view onto the special stage
- Screens with real-time results service
- Entertainment
- VIP staff and host at your service
- Exclusive toilet facilities

FOREST HOSPITALITY EVENTS

Forest hospitality services are operated by the official Secto Rally Finland partner Aki Teiskonen. VIP areas are located in prime spectator locations at the Laukaa special stage (31 July) and Parkkola special stage (1 August).

Forest VIP packages include entry to the special stage as well as the following services:

- Bus transportation
- Quality catering
- Unobstructed view onto the special stage
- Seating in designated spectator area
- Screens with real-time results service
- VIP staff and host at your service
- Exclusive toilet facilities

Optional helicopter flights and boat transportation are available as add-on services.

10.2 SALES AND VIP BOOKINGS

Should you be interested in our hospitality, do not hesitate to contact our sales. For more information, please visit the hospitality section on the Secto Rally Finland website www.sectorallyfinland.fi/vip.

For bookings and enquiries, please see VIP Sales under Art. 2.1.

The sales and marketing of Secto Rally Finland VIP packages are carried out by the event organiser, AKK Sports Ltd.

11. ACCOMMODATION & TRAVEL

11.1 ACCOMMODATION

Please note: Hotels in the Jyväskylä area are mainly booked by registered teams and media representatives. All others are kindly asked to look for alternative accommodation in smaller hotels, hostels, private flats, cottages etc. Different alternatives for accommodation can be found from <https://visitjyvaskyla.fi/en/stay/>. Tourist Office team is happy to assist with questions: e-mail: travel@jyvaskyla.fi, chat: visitjyvaskyla.fi, tel. +358 14 569 0113.

The official HQ Hotel for Secto Rally Finland is Sokos Hotel Paviljonki. Finland's first ever city centre congress and exhibition hotel welcomes rally guests in the heart of the Paviljonki area with unique surroundings and services. Within a few minutes walking distance from the hotel you can find the Jyväskylä Travel Centre (railway & bus station), too.

Sokos Hotel Alexandra is our Partner Hotel, hosting the Media Accreditation Centre. Original Sokos Hotel Alexandra is located centrally in Jyväskylä, opposite the Travel Centre (Matkakeskus) and only a short walking distance from the Paviljonki Rally HQ.

Partner Hotel contact details

Sokos Hotel Alexandra

Hännikaisenkatu 35
FI-40100 Jyväskylä

www.sokoshotels.fi/fi/jyvaskyla/sokos-hotel-alexandra

MOBILE: +358 20 1234 642

E-MAIL: alexandra.jyvaskyla@sokoshotels.fi

HQ Hotel contact details

Sokos Hotel Paviljonki

Lutakonaukio 10
FI-40100 Jyväskylä

www.sokoshotels.fi/fi/jyvaskyla/solo-sokos-hotel-paviljonki

MOBILE: +358 20 1234 645

E-MAIL: paviljonki.jyvaskyla@sokoshotels.fi

11.2 TRAVEL PACKAGES

Elämymatkat, the Official Travel Partner of Secto Rally Finland, offers a wide selection of travel packages for Secto Rally Finland.

Depending on the package, your experience includes a VIP experience or a traditional full-weekend Rally Pass, accommodation, and shuttle transportation to the most popular spectator areas and Rally Arenas throughout the weekend.

The travel packages are designed to make your weekend easy and stress-free. With accommodation, tickets and transportation organised in advance, you can focus entirely on enjoying the atmosphere of Secto Rally Finland.

Travel package is ideal if you want:

- Hassle-free all-in-one solution
- Guaranteed access to special stages and key viewing locations
- Hotel accommodation in Jyväskylä, Laajavuori, Himos or nearby areas
- Option to choose between a standard package or a VIP experience
- Quality catering

Typical package includes:

- Accommodation at your selected hotel
- Rally Pass or VIP ticket
- Shuttle transportation to/from special stages
- Ready-made timetable to help plan your weekend

Many released travel package categories may sell out quickly. We recommend booking early to secure your preferred option. More information: [Secto Rally Finland Travel Packages](#)

For inquiries, please contact events@elamysgroup.com, +358 9 2510 2030

11.3 SERVICES IN JYVÄSKYLÄ PAVILJONKI

EVENT PRODUCTION AND TECHNOLOGY

Paviljonki, the home of the Rally HQ, is a full-service event venue providing facilities and services for any event.

Paviljonki Productions provides everything you need for events – planning, technical solutions and

structures. They design and build e.g. lounge areas and exhibition stands and provide furniture as well as visibility elements like prints, including graphic design.

Paviljonki staff can also offer complete event technology solutions, audio, lighting and visual technology. Everything is planned, constructed and dismantled using their own equipment and experienced professionals.

Contact them at tekniikka@paviljonki.fi or see <https://www.paviljonki.fi/en/exhibition-technology/> for more information.

RESTAURANT SERVICES

Paviljonki restaurant services warmly welcomes you to enjoy the rally atmosphere and tasty restaurant services in Paviljonki!

Food & Events offers delicious meals and pastries with quality coffee in our cozy restaurant in Paviljonki.

- Daily breakfast, lunch and dinner menus throughout the whole rally week
- Options available for special diets and allergies
- Table reservations
- Catering both in-house and to your facilities on-site (pastries and coffee, cocktail parties etc.)
- Refreshing beverages and alcoholic drinks

Please don't hesitate to contact Paviljonki restaurant sales and they will find the best solutions with discounted prices for all your catering needs in Secto Rally Finland!

myyntipalvelu.paviljonki@restel.fi

+358 20 799 4084

11.4 AIRPORTS AND GENERAL TRAVEL INFORMATION

FLIGHTS

Finnair flies from Helsinki-Vantaa (HEL) to Jyväskylä (JYV/EFJY). Check out Finnair's daily schedules and book your tickets from: <https://finnair.com/fi-en> The Jyväskylä Airport is located in Tikkakoski, 21 km north of Jyväskylä and it is mostly served by Finnair. For more information of airport please visit: <https://www.finavia.fi/en/airports/jyvaskyla>

TRAINS

Jyväskylä is well connected by rail to other Finnish cities. Best connection from Helsinki Airport to Jyväskylä is to take the train from the airport. The journey from Helsinki takes from 2 h 45 min to 3 h 30 min, depending on the train. Tickets and schedules on: www.vr.fi.

BUSES

National bus service, Matkahuolto, takes you comfortably to Jyväskylä. Purchase tickets and check the timetables of all different bus operators on: www.matkahuolto.fi. Information about the bus service to special stages during the rally will be published on the Secto Rally Finland website during the spring. The special stage busses depart from and return to the Jyväskylä Travel Centre (Matkakeskus). Transport to and from the special stages is not included in the stage ticket prices.

JYVÄSKYLÄ TRAVEL CENTRE

The combined railway and bus station, the Jyväskylä Travel Centre (Matkakeskus), is open from 06:00 to 22:00 Friday to Saturday and from 08:00 to 22:00 on Sundays. For more information, please visit <https://visitjyvaskyla.fi/en/arriving/travel-centre-jyvaskyla/>.

12. MEDIA

12.1 MEDIA CONTACTS BEFORE THE RALLY

Please see Media Contact details under Art. 2.3.

12.2 MEDIA ACCREDITATION PROCEDURES

The accreditations will be granted for media outlets sending named representatives – not the other way around. The application for Media Pass is to be applied by the media outlet. The Accreditation Guidelines and criteria for media outlets on the FIA WRC Events are published on the FIA website: https://www.fia.com/media-center/media_accreditation/World%20Rally%20Championship

Please read carefully the Accreditation Guidelines to ensure all the requested information is included and that the application is forwarded to the correct organisation before submitting the application.

The Media Pass is considered as a working tool for journalists, and it cannot be used for public relations, promotions or entertainment purposes. No advertising, public relation agency or similar company or organisation will be accredited as media. Nor will the rally issue any media accreditation to representatives (press officers or otherwise) of sponsors, suppliers, teams, drivers etc. Exemptions will be made solely by the FIA WRC Media Delegate.

12.3 HOW TO APPLY FOR ACCREDITATION?

NATIONAL PUBLICATIONS, JOURNALISTIC PHOTOGRAPHERS, PROFESSIONAL NEWS WEBSITES, RADIO STATIONS

NATIONAL ACCREDITATION OPEN: 31 May – 9 July 2026

All applications via online form at www.sectorallyfinland.fi/media.

After the closing date the list of proposed national media accreditations will be sent to FIA Media Delegate for final approval. Confirmation letter with further instructions will be sent via email once the accreditation is confirmed by the FIA.

RALLY BY RALLY INTERNATIONAL MEDIA (EXCLUDING MOVING IMAGES)

INTERNATIONAL ACCREDITATION OPEN: 31 May – 16 July 2026

All requests for international rally by rally accreditations must be made online: <https://wrc.ams.fia.com>

NATIONAL AND INTERNATIONAL TELEVISION AND ALL MOVING IMAGES, COMMERCIAL PHOTOGRAPHERS, INTERNATIONAL RADIO CHANNELS

All applications to be sent directly to the WRC Promoter: accreditation@wrc.com. More information: <https://www.wrc.com/en/misc/accreditation>.

13. MEDICAL INFORMATION

At the administrative checks before the rally all drivers must present their Medical Certificate of Aptitude in accordance with the FIA medical standards, and as given to them by their own ASN. Normally this Medical Certificate of Aptitude is included in the International Competition License, but if it is not, the (co-)driver is responsible to present a separate document.

A decision in accordance with Finnish law has been taken by the Central Finland Wellbeing Services County that an individual living elsewhere than in Finland must pay the total cost of treatment received unless other provision has been made in international agreements.

Please note that all (co-)drivers must carry a valid international insurance for repatriation in case of accident, as per FIA WRC Sporting Regulations, Art. 2.5.

RESIDENTS OF EU/EEA/ AND SWITZERLAND

By presenting your European Health Insurance Card, you will receive medical treatment on the same terms as the local residents. However, not all doctors and hospitals operate within the reimbursement system, which means that any costs you incur outside the system will have to be paid by yourself. As a general rule, public health services are covered by the reimbursement system.

The European Health Insurance Card mainly covers emergency treatment in the event of an illness or injury and other medically necessary treatment. You can also get medical treatment if you have a pre-existing chronic condition that requires medical attention while you are abroad.

Please contact your national health insurance authorities to get your card before travelling to Finland.

RESIDENTS OF OTHER COUNTRIES

If you are a resident of a country other than those mentioned above, the patient charge will be the equivalent of the total cost of treatment plus the patient charge for an individual living in Finland.

PAYMENT OF THE PATIENT CHARGE

If you require first aid, collection of the patient charge will be made as you leave hospital. Collection of the charge will take place in advance in cases where you have agreed with the hospital on treatment that is not urgent.

Should an insurance institution be responsible for your patient charges, acceptable evidence of this must be presented to the hospital.

All competitors living in the European Community should organise themselves a European Health Insurance Card to be able to get free medical services at the communal health care centres and hospitals. This card can be obtained from your local social services.

14. GENERAL FACTS AND INFO

14.1 GENERAL FACTS ABOUT FINLAND

POPULATION

5.627 million, giving an average density of only 18.3 per sq. kilometre; annual growth rate 0.127%. Life expectancy 82.48 years. The demographic pyramid resembles that of most other industrial countries, with the middle-aged groups predominating. Average household sizes 2.7 persons. 45,9% of the population live in single-family houses, 46% in apartment blocks; room area per person 36 sq. metres. 85.6% are urban-dwellers, with 1.3 million in Helsinki and the adjacent cities of Espoo and Vantaa. Other major cities include Tampere, Oulu, Turku, Jyväskylä, Lahti, Kuopio, Kouvola and Rovaniemi.

AREA

338,472 sq. kilometres, of which 11.3% is water. There are more than 168 000 lakes in Finland. 7% of the land is under cultivation, barley and oats being the main crops. Forests (mainly pine and spruce) cover 76% of the country.

CLIMATE

The Finnish climate is considerably milder than one might expect from the country's northerly location. There are major variations in the seasons. During the rally, it is late summer and weather may vary quite a lot. It can be sunny and over 20 degrees Celsius or it can rain a lot.

TIME ZONE

Finnish time is two hours ahead of Greenwich Mean Time (GMT +2 hours). Daylight saving time is used from the last Sunday of March to the last Sunday of October.

SUNRISE - SUNSET IN JYVÄSKYLÄ DURING THE EVENT

- Wednesday 29 July sunrise at 4:33 sunset at 22:12
- Thursday 30 July sunrise at 4:36 sunset at 22:10
- Friday 31 July sunrise at 4:38 sunset at 22:07
- Saturday 1 August sunrise at 4:41 sunset at 22:04
- Sunday 2 August sunrise at 4:44 sunset at 22:01
- Civil twilight starts at about 3:45 and ends at about 23:15 at this time of the year.

LANGUAGE

- Finnish 86% of the population
- Swedish 5% of the population
- Other 9% of the population
- English is spoken by almost everybody, German and French by some

TRAFFIC RULES

- Drive on the right side, overtake on the left
- Drivers and all passengers are required to use front and rear seat belts and motorcyclists to wear helmets
- Vehicles must always use lights when driving
- Drivers must carry their driving license at all times
- Pedestrians who are on a crosswalk or preparing to step onto it must be allowed to proceed unimpeded. The vehicle must slow down and, if necessary, stop before the pedestrian crossing.

SPEED LIMITS

- Built up areas and cities 50 km/h (if not marked lower)
- Main Roads 80 km/h (if not marked lower)
- Motorways 100 or 120 km/h

CURRENCY AND BANKING

The Finnish currency unit is euro (€ or EUR), divided into 100 cents.

The denominations in circulation are:

- Notes - 500, 200, 100, 50, 20, 10 and 5 euros
- Coins - 2 and 1 euros; 50, 20, 10 and 5 cents (2 and 1 cent coins not in active use in Finland).

We recommend to check current exchange rates from dedicated websites.

AUTOMATIC TELLER MACHINES

There are several cash dispensers all over the city. They usually operate on Visa/Eurocard. From the ATMs you can withdraw notes in denominations of 20 and 50 €. The closest cash dispenser to the Rally HQ is in Matkakeskus (the railway station). You can recognise the ATMs from an orange sign "OTTO." or a yellow/blue sign "NOSTO".

CREDIT CARDS

All major credit cards are very widely accepted in hotels, car rental offices, department stores, restaurants, shops and most taxis. Foreign credit cards can be used to withdraw cash from almost all ATMs.

MEDICAL SERVICES

Medicines are sold at pharmacies (APTEEKKI). Usually pharmacies are open until 17.00 or 18.00. There is one pharmacy (Yliopiston Apteekki) at Kauppakatu 39, which is open daily 08.00 – 23.00.

All hospitals have doctors on duty around the clock. In emergencies, patients should be directed to a health care centre or hospital emergency unit. Dental care is mainly provided by private practitioners.

WATER

The tap water is safe to drink.

ELECTRICITY

The electric current in Finland is 230 Volts. Plugs and sockets are the same as in the continental countries of the European Union.

TELEPHONES

There are pre-paid SIM cards available for your GSM mobile phones at 'R-Kioski' in various values.

USEFUL FINNISH WORDS

Hi/Hello	Hei/Terve	Good Morning	Hyvää huomenta
Bye Bye	Heippa	Good day	Hyvää päivää
Thank you	Kiitos	Good evening	Hyvää iltaa
You're welcome	Ole hyvä	What time is it?	Paljonko kello on?
Sorry	Anteeksi	Can you help?	Voitko auttaa?
Yes	Kyllä	How are you?	Mitä kuuluu?
No	Ei	Nice to meet you	Hauska tavata
Auto	Car	Special Stage	Erikoiskoe
Rally	Ralli	Reconnaissance	Tutustuminen
Driver	Kuljettaja	Service Park	Huoltoparkki
Co-driver	Kartturi	Scrutineering	Katsastus

14.2 CITY OF JYVÄSKYLÄ

Secto Rally Finland has been hosted by the City of Jyväskylä since the very beginning of the event, for 75 years. The role of the city has grown to be a more central one over the years, as the event has grown to a full-blown world level event.

GENERAL INFORMATION

The city of Jyväskylä with its surroundings is in the heart of beautiful Finnish Lakeland. It is easily reached by road, air and water. Jyväskylä is Finland's fastest-growing city and one of the five growth centres in the country. Jyväskylä's population grew by about 800 inhabitants last year, and the relative population growth was the sixth fastest in the country. In our youthful city of study and education with over 150,000 inhabitants, every fourth oncoming person is a student. In Jyväskylä's prestigious educational institutions, future talents are growing.

In the Jyväskylä Region you'll encounter exciting urban culture and thousands of events. The breathtaking lake nature with its activity opportunities is always close to you – even in the middle of the city. The Jyväskylä Region offers more of Alvar Aalto's architecture than any other city in the world, along with the magnificent UNESCO World Heritage Sites, not to mention the pleasure of enjoying the saunas of the Sauna Region of the World. As darkness takes over, this City of Light with more than a hundred permanent illuminated locations display a stunning glow.

BUSTLING CENTRE OF INNOVATION

Business growth is strong in Jyväskylä. At the centre of the city development are fields such as sports, health promotion and well-being, and industry renewal. In addition, Jyväskylä is one of Finland's growth centres for ICT and Cybersecurity expertise. Developing and enhancing business operation conditions is one of the top priorities of our city strategy.

Jyväskylä is a major city of study and scientific research, hosting many international conferences at the university, and the Fair and Event Center Paviljonki. University of Jyväskylä and JAMK University of Applied Sciences act also as important accelerators for innovation and development for the companies in the area.

QUALITY OF LIFE

The landscape of Jyväskylä is varied with lakes, forests and hills within a walking distance of the city centre. The Laajavuori skiing centre and recreation area with its new outdoor theatre facility provides excellent opportunities for sports and other activities. Lively pedestrian precinct, vibrant harbour area and beautiful university campus right in the city centre are central places for different events. The trail around Lake Jyväsjärvi is a great recreational area for both residents and visitors alike.

The Jyväskylä region is easily reached by land and air: the distance of 270 kilometres from Helsinki takes only 50 minutes by plane and some 3 hours by car or by rail. For more information about the city and what it can offer, please log onto www.visitjyvaskyla.fi/en or e-mail travel@jyvaskyla.fi.

14.3 MUNICIPALITY OF JÄMSÄ

Jämsä is a vivid city of about 20,000 inhabitants in Central Finland. It situates conveniently between Tampere and Jyväskylä. It takes about 2,5 hours from Helsinki by car, train or bus to reach the area. The region is known of its lakeside nature, one of the most popular tourism centre in Southern part of Finland, Himos, diverse services and a strong industrial base built around major employers such as UPM/ United Paper Mill Ltd. in Jämsänkoski and Patria's Aviation and composite expertise.

Secto Rally Finland

Secto Rally Finland has long been part of Jämsä's identity, with many of its iconic gravel roads and classic rally landscapes located in the region. In 2026, Himos-Jämsä is an official partner of the event, and the entire final day of the rally will be competed in the area. In Himos-Jämsä you will enjoy the rally experience around the Himos tourism centre services, and furthermore the region offers extensive hospitality and rally-related services right next to the action – combining comfort and atmosphere and serving as an ideal base for reaching all stages of the weekend.

On Sunday, the competition concludes on the Himos-Jämsä special stage, with the decisive second run as the Wolf Power Stage, finishing directly in the Himos event area.

Himos functions as the central hub of the day, allowing spectators to follow the stages and the podium ceremony within one compact setting. The venue features spectator areas, services, entertainment and live broadcasts, creating an immersive experience for teams, media and visitors.

Himos-Jämsä

Himos-Jämsä is a diverse tourism region, combining the popular Himos tourism centre with the wider Jämsä area and its charming villages. With over 6,000 beds and a comprehensive range of services, the area attracts hundreds of thousands of visitors annually.

Visitors can enjoy hotels, luxury villas and cottage accommodation, outdoor and activity services, culinary experiences, culture and local shopping. Himos features some of Southern Finland's best ski slopes, finest golf greens and the most popular festivals and events.

Located on the shores of Lake Päijänne – Finland's second-largest lake, which was ranked in 2024 by National Geographic as one of the most beautiful lakes in the world – the region offers excellent nature experiences throughout the seasons. Biking, hiking and numerous outdoor activities are available across the area. Himos-Jämsä is also home to Finland's one and only Sauna Village, which is listed as a UNESCO intangible cultural heritage.

We warmly welcome you to experience the vibrant rally atmosphere in the active and scenic Himos-Jämsä region!

More information: www.visithimosjamsa.fi

14.4 MUNICIPALITY OF KONNEVESI

Konnevesi - where Rally legends meet lakeland wilderness

In 2026, the electrifying spirit of Secto Rally Finland returns to Konnevesi – and this time, it returns in full force. After a long break, Konnevesi proudly hosts its own special stage once again: SS4 and SS8 Sydänmaa.

Organised by the local motorsport club Konneveden MK/UA, celebrating its 60th anniversary this year, Sydänmaa represents the true DNA of Rally Finland – fast, flowing gravel roads cutting through deep Finnish forests, demanding rhythm changes and spectacular spectator locations. Rally is not just an event here; it is part of the local identity, with strong motorsport heritage, active grassroots club culture and passionate fans creating an unforgettable atmosphere.

Beyond the roar of rally engines, Konnevesi offers pure Lakeland magic. The Seven Rapids Route begins from Lake Konnevesi, guiding visitors through a chain of scenic rapids and interconnected waterways. Its first rapid, Siikakoski – known as “the Rapids of Presidents” – has welcomed distinguished anglers such as Finnish President Urho Kekkonen and President of the United States Jimmy Carter. Internationally recognised as one of Europe’s finest trout fishing destinations, the route is a dream location for fly-fishers, kayakers and anyone seeking authentic Nordic river scenery.

At Southern Konnevesi National Park, visitors encounter one of Finland’s most breathtaking lakeland landscapes. Towering cliffs rise dramatically above crystal-clear waters, ancient forests stretch across rolling terrain, and narrow straits open into wide, island-dotted lake views. Marked hiking trails lead to panoramic viewpoints, while paddling routes weave through peaceful archipelagos and sheltered bays. The park’s rich biodiversity, clean air and tranquil atmosphere offer the perfect counterbalance to the adrenaline of rally weekend.

Konnevesi’s culinary traditions are deeply connected to its waters and forests. The municipality is especially known for fresh vendace (muikku), salmon and local fish delicacies served straight from pristine lakes. Visitors should also taste the legendary Manninen rye bread, a beloved local speciality that reflects generations of baking tradition. From lakeside cottages and countryside stays to welcoming guesthouses, accommodation options combine comfort with an authentic connection to nature.

Come for the speed. Stay for the wilderness. Experience Rally Finland in Konnevesi.

For more information, visit www.konnevesi.fi

15. USEFUL CONTACTS

Rally Car rentals and services:

Printsport Oy Hohontie 10, 41400 Liestuore www.printsport.fi	+358 40 301 1401, eero@printsport.fi +358 40 301 1413, jakke@printsport.fi
RTE-Motorsport Kuvasintie 27, 78850 Varkaus www.rtemotorsport.net	+358 44 281 5031 janne.eronen@rtemotorsport.net
Esko Reiners Motorsport Oy Koivupurontie 3, 40320 Jyväskylä www.eskoreiners.fi	+358 45 326 4940 +358 44 252 8015 esko@eskoreiners.fi
Kymen Septech Oy www.septech.fi	+358 40 8344 438 riku@septech.fi
TGS Worldwide www.tgs.fi	+358 45 139 7604 info@tgs.fi
DogBox Oy www.dogbox.fi	+358 440 956 777 jukka@dogbox.fi

Motorsport equipment:

Printsport Oy Hohontie 10, 41400 Liestuore www.printsport.fi	+358 40 301 1413 jakke@printsport.fi
RTE-Motorsport Hulekuja 4, 40320 Jyväskylä Kuvasintie 27, 78850 Varkaus www.rtemotorsport.net	jyvaskyla@rtemotorsport.net +358 44 281 5031 janne.eronen@rtemotorsport.net
Autoracing Ohrahdantie 9, 00680 Helsinki www.autoracing.fi	+358 9 540 7800 info@autoracing.fi
Valkealan GPower Ky Tehontie 25C, 45200 Kouvola www.kilpavarusteet.fi	+358 45 279 8080 info@kilpavarusteet.fi
Osatuonti Racing Shop Kimokatu 1, 20380 Turku www.osatuontiracingshop.fi	+358 500 525 342 myynti@osatuontiracingshop.fi
Printed materials:	
Digipaino Kirjaksi.net Oy Brochures, flyers, stickers, business cards, books, large-format printing etc. Rientolantie 2, 41940 Jyväskylä www.kirjaksi.net	+358 40 145 1496 janne.vaarto@kirjaksi.net



GUIDE TO SUSTAINABLE RALLY EVENT

- Reduce, reuse & recycle
- Save energy & water
- Give preference to the digital format
- Use public transport
- Organise car pool
- Drive eco friendly
- Do not litter the ground
- Be aware of your actions
- Lead the way

**RESPECT OTHER PEOPLE &
YOUR SURROUNDINGS**

LOVE YOUR SPORT ♥



#SectoRallyFinland

www.sectorallyfinland.fi

RALLY GUIDE 1: APPENDICES

APPENDICES

ITINERARIES

1	Itinerary	40-43
2	Reconnaissance Schedule	44

MAPS

3	Jyväskylä City 2026	45
4	Daymaps	46-49
	Thursday - Shakedown and Section 1	46
	Friday - Sections 2 - 3	47
	Saturday - Sections 4 - 5	48
	Sunday - Sections 6 - 7	49

APPENDIX 1 / ITINERARY

THURSDAY - SHAKEDOWN AND SECTION 1

SHAKEDOWN		Thursday, 30 July 2026				
TC	Location	Distances			Target time	1st car due
		SS	Liaison	Total		
TCSD			25,08	25,08		8:56
SD	Shakedown, Ruuhimäki	4,12				9:01
	Jyväskylä, Paviljonki		24,60	28,72		
SD Totals		4,12	49,68	53,80		

SECTION 1		Thursday, 30 July 2026				
0	Start of the Rally, (Jyväskylä Paviljonki)					18:45
	Start no Refuel. Distance to next refuel	(2,58)	(4,48)	(7,06)		
1			1,94	1,94	0:17	19:02
SSS1	Harju 1 (Live TV)	2,58				19:05
1A	Technical Zone IN		1,77	4,35	0:25	19:30
1B	Technical Zone OUT - Service IN				0:10	19:40
	Service A (Jyväskylä, Paviljonki)	(2,58)	(3,71)	(6,29)	0:15	
1C	Service OUT - Parc Fermé IN					19:55
Thursday totals		2,58	3,71	6,29		
			Sunrise	4:36	Sunset	22:10

v. 1.0 3.3.2026

APPENDIX 1 / ITINERARY

FRIDAY - SECTIONS 2-3

SECTIONS 2 & 3							Friday, 31 July 2026	
TC	Location	Distances			Target time	1st car due		
		SS	Liaison	Total				
1D	Parc Fermé OUT		0,00	0,00		7:40		
RZ	Refuel Service Park		(0,77)					
1	Distance to next refuel	(33,98)	(103,71)	(137,69)				
2			46,47	46,47	1:01	8:41		
SS2	Laukaa 1	18,16				8:44		
3			32,91	51,07	0:58	9:42		
SS3	Saarikas 1	15,82				9:45		
RZ	Remote Refuel Konnevesi		(25,10)					
2	Distance to next refuel	(28,59)	(80,09)	(108,68)				
4			35,36	51,18	1:02	10:47		
SS4	Sydänmaa 1	19,04				10:50		
5			37,35	56,39	1:05	11:55		
SS5	Hoho 1	9,55				11:58		
5A	Technical Zone & Regroup IN		31,71	41,26	0:50	12:48		
5B	Regroup OUT - Service IN				0:26	13:14		
	Service B (Jyväskylä, Paviljonki)	(62,57)	(183,80)	(246,37)	0:30			
5C	Service OUT	-	-	-		13:44		
RZ	Refuel Service Park		(0,77)					
3	Distance to next refuel	(33,98)	(103,71)	(137,69)				
6			46,47	46,47	1:01	14:45		
SS6	Laukaa 2	18,16				14:48		
7			32,91	51,07	0:58	15:46		
SS7	Saarikas 2	15,82				15:49		
RZ	Remote Refuel Konnevesi		(25,10)					
4	Distance to next refuel	(31,17)	(82,70)	(113,87)				
8			35,36	51,18	1:02	16:51		
SS8	Sydänmaa 2	19,04				16:54		
9			37,35	56,39	1:05	17:59		
SS9	Hoho 2 (Live TV)	9,55				18:05		
10			32,55	42,10	0:54	18:59		
SSS10	Harju 2	2,58				19:05		
10A	Technical Zone IN		1,77	4,35	0:25	19:30		
10B	Technical Zone OUT - Flexi Service IN				0:10	(19:40)		
	Flexi Service C (Jyväskylä, Paviljonki)	(65,15)	(186,41)	(251,56)	0:45			
10C	Flexi Service OUT - Parc Fermé IN *					(20:25)		
	All cars (except P1 and restarting crews) must enter Parc Fermé no later than:					01:00		
	Friday totals	127,72	370,21	497,93				
	* Early arrival is permitted.							
			Sunrise	4:38	Sunset	22:07		

v. 1.0 3.3.2026

APPENDIX 1 / ITINERARY

SATURDAY - SECTIONS 4-5

SECTIONS 4 & 5							Saturday, 1 August 2026			
TC	Location	Distances			Target time	1st car due				
		SS	Liaison	Total						
10D	Parc Fermé OUT		0,00	0,00		7:15				
RZ	Refuel Service Park		(0,77)							
5	Distance to next refuel	(16,76)	(92,20)	(108,96)						
11			28,14	28,14	0:43	7:58				
SS11	Parkkola 1	16,76				8:01				
RZ	Remote Refuel Länkipohja		(64,83)							
6	Distance to next refuel	(29,65)	(60,92)	(90,57)						
12			84,75	101,51	1:38	9:39				
SS12	Päijälä 1	10,55				9:42				
13			25,39	35,94	0:51	10:33				
SS13	Västilä 1	19,10				10:36				
RZ	Remote Refuel Länkipohja		(15,61)							
7	Distance to next refuel	(16,44)	(81,84)	(98,28)						
14			59,95	79,05	1:23	11:59				
SS14	Leustu 1 (Live TV)	16,44				12:05				
14A	Technical Zone & Regroup IN		36,73	53,17	1:00	13:05				
14B	Technical Zone & Regroup OUT - Service IN				0:40	13:45				
	Service D (Jyväskylä, Paviljonki)	(62,85)	(234,96)	(297,81)	0:30					
14C	Service OUT		-	-	-	14:15				
RZ	Refuel Service Park		(0,77)							
8	Distance to next refuel	(16,76)	(92,20)	(108,96)						
15			28,14	28,14	0:43	14:58				
SS15	Parkkola 2	16,76				15:01				
RZ	Remote Refuel Länkipohja		(64,83)							
9	Distance to next refuel	(29,65)	(60,92)	(90,57)						
16			84,75	101,51	1:38	16:39				
SS16	Päijälä 2	10,55				16:42				
17			25,39	35,94	0:51	17:33				
SS17	Västilä 2	19,10				17:36				
RZ	Remote Refuel Länkipohja		(15,61)							
10	Distance to next refuel	(16,44)	(81,84)	(98,28)						
18			59,95	79,05	1:23	18:59				
SS18	Leustu 2 (Live TV)	16,44				19:05				
18A	Technical Zone IN		36,73	53,17	1:00	20:05				
18B	Technical Zone OUT - Flexi Service IN				0:10	(20:15)				
	Flexi Service E (Jyväskylä, Paviljonki)	(62,85)	(234,96)	(297,81)	0:45					
18C	Flexi Service OUT - Parc Fermé IN *					(21:00)				
	All cars (except P1 and restarting crews) must enter Parc Fermé no later than:					01:00				
	Saturday totals	125,70	469,92	595,62						
	* Early arrival is permitted.									
			Sunrise	4:41	Sunset	22:04				

v. 1.0 3.3.2026

SUNDAY - SECTIONS 6-7

SECTIONS 6 & 7		Sunday, 2 August 2026				
TC	Location	Distances			Target time	1st car due
		SS	Liaison	Total		
18D	Parc Fermé OUT		0,00	0,00		9:25
RZ	Refuel Service Park		(0,77)			
11	Distance to next refuel	(30,02)	(56,16)	(86,18)		
19			53,80	53,80	1:07	10:32
SS19	Himos-Jämsä 1	30,02				10:35
19A	Technical Zone & Regroup IN (Himos)		0,36	30,38	0:35	11:10
19B	Regroup OUT				1:40	12:50
RZ	Remote Refuel Himos		(2,77)			
12	Distance to Finish	(30,02)	(60,05)	(90,07)		
20			7,84	7,84	0:22	13:12
SS20	Himos-Jämsä 2 (Wolf Power Stage)	30,02				13:15
20A	PS Podium Holding IN * <i>Podium (Himos)</i>		0,33	30,35	0:30	13:45
20B	PS Podium Holding OUT					14:15
20C	Technical Zone & Parc Fermé IN Rally Finish *		(54,65)	(54,65)	1:00	
Sunday totals		60,04	116,98	177,02		
* Early arrival is permitted.			Sunrise	4:44	Sunset	22:01

v. 1.0 3.3.2026

TOTALS OF THE RALLY				
	SS	Liaison	Total	%
Thursday	2,58	3,71	6,29	41,0 %
Friday	127,72	370,21	497,93	25,7 %
Saturday	125,70	469,92	595,62	21,1 %
Sunday	60,04	116,98	177,02	33,9 %
Total	316,04	960,82	1276,86	24,8 %

APPENDIX 2 / RECONNAISSANCE SCHEDULE

TUESDAY 28.7. - THURSDAY 30.7.

Reconnaissance Day 1 Tuesday 28 July 2026

Group A	Allowed Time	SS km	Total SS km (x2)	Finish 1 / Start 2	To Next SS	Total km
Service Park, Paviljonki					28,14 SS 11/15	28,14
SS 11/15 Parkkola	7:00 - 9:30	16,76	33,52	25,90 SS 11/15	84,75 SS 12/16	144,17
SS 12/16 Päijälä	9:15 - 13:15	10,55	21,10	25,39 SS 12/16	25,39 SS 13/17	71,88
SS 13/17 Västilä	9:45 - 13:45	19,10	38,20	11,50 SS 13/17	55,10 SS 19/20	104,80
SS 19/20 Himos-Jämsä	12:00 - 15:30	30,02	60,04	8,20 SS 19/20	14,40 SS 14/18	82,64
SS 14/18 Leustu	13:30 - 17:00	16,44	32,88	19,20 SS 14/18	36,73 SP	88,81
Total						520,44

Group B	Allowed Time	SS km	Total SS km (x2)	Finish 1 / Start 2	To Next SS	Total km
Service Park, Paviljonki					28,14 SS 11/15	28,14
SS 11/15 Parkkola	8:30 - 11:00	16,76	33,52	25,90 SS 11/15	84,75 SS 12/16	144,17
SS 12/16 Päijälä	10:45 - 14:45	10,55	21,10	25,39 SS 12/16	25,39 SS 13/17	71,88
SS 13/17 Västilä	11:15 - 15:15	19,10	38,20	11,50 SS 13/17	55,10 SS 19/20	104,80
SS 19/20 Himos-Jämsä	13:45 - 17:15	30,02	60,04	8,20 SS 19/20	14,40 SS 14/18	82,64
SS 14/18 Leustu	15:00 - 18:30	16,44	32,88	19,20 SS 14/18	36,73 SP	88,81
Total						520,44

Reconnaissance Day 2 Wednesday 29 July 2026

Group A	Allowed Time	SS km	Total SS km (x2)	Finish 1 / Start 2	To Next SS	Total km
Service Park, Paviljonki					46,47 SS 2/6	46,47
SS 2/6 Laukaa	7:00 - 9:30	18,16	36,32	1,20 SS 2/6	32,91 SS 3/7	70,43
SS 3/7 Saarikas	8:00 - 11:00	15,82	31,64	4,00 SS 3/7	35,36 SS 4/8	71,00
SS 4/8 Sydänmaa	9:15 - 12:30	19,04	38,08	13,20 SS 4/8	37,35 SS 5/9	88,63
SS 5/9 Hoho	10:45 - 14:30	9,55	19,10	14,70 SS 5/9	9,00 SD	42,80
SD Ruuhimäki	11:30 - 15:30	4,12	8,24	0,39 SD	24,60 SP	33,23
Total						352,56

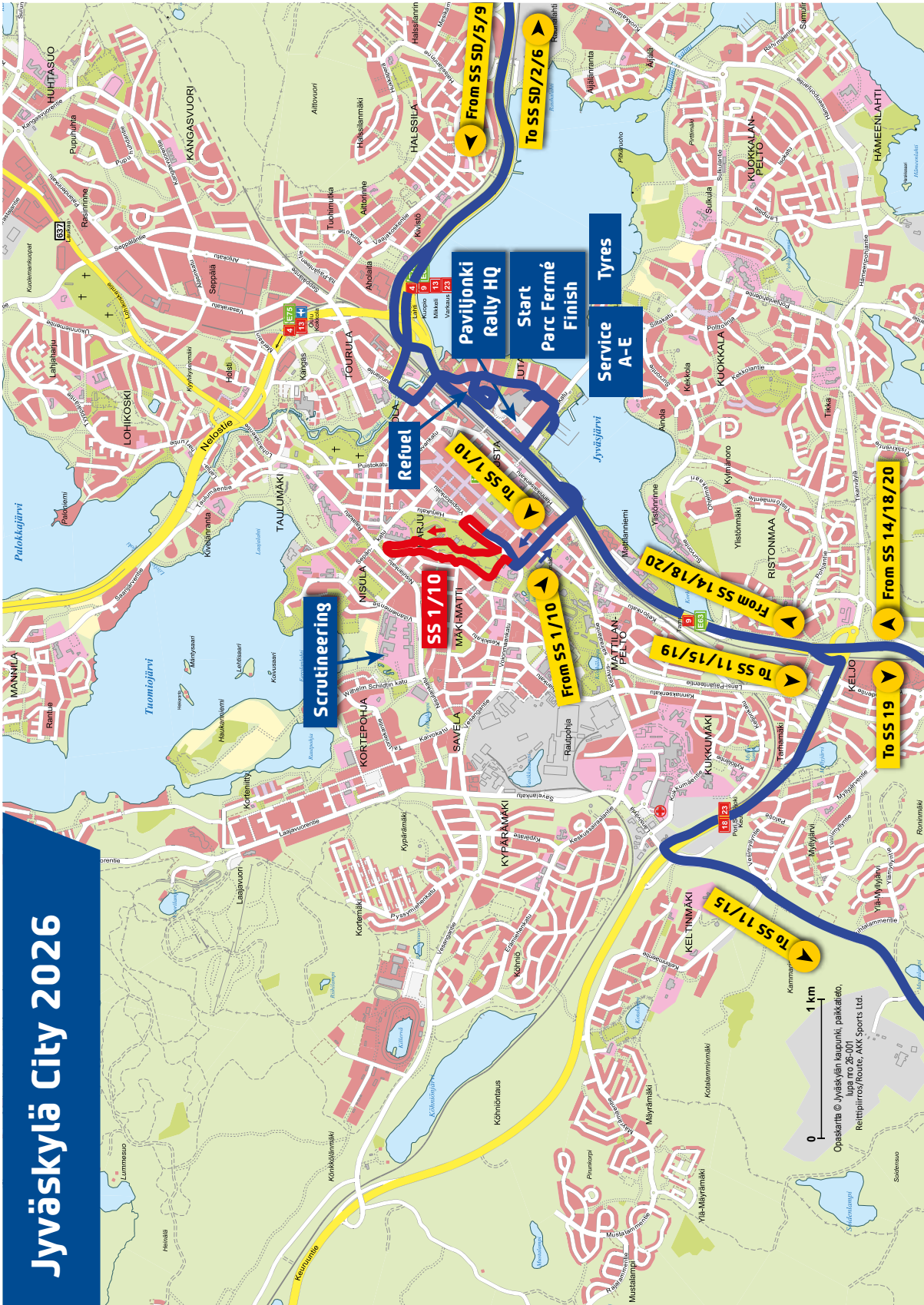
Group B	Allowed Time	SS km	Total SS km (x2)	Finish 1 / Start 2	To Next SS	Total km
Service Park, Paviljonki					46,47 SS 2/6	46,47
SS 2/6 Laukaa	8:30 - 11:00	18,16	36,32	1,20 SS 2/6	32,91 SS 3/7	70,43
SS 3/7 Saarikas	9:30 - 12:30	15,82	31,64	4,00 SS 3/7	35,36 SS 4/8	71,00
SS 4/8 Sydänmaa	10:45 - 14:30	19,04	38,08	13,20 SS 4/8	37,35 SS 5/9	88,63
SS 5/9 Hoho	12:15 - 16:00	9,55	19,10	14,70 SS 5/9	9,00 SD	42,80
SD Ruuhimäki	13:00 - 17:00	4,12	8,24	0,39 SD	24,60 SP	33,23
Total						352,56

Reconnaissance Day 3 Thursday 30 July 2026

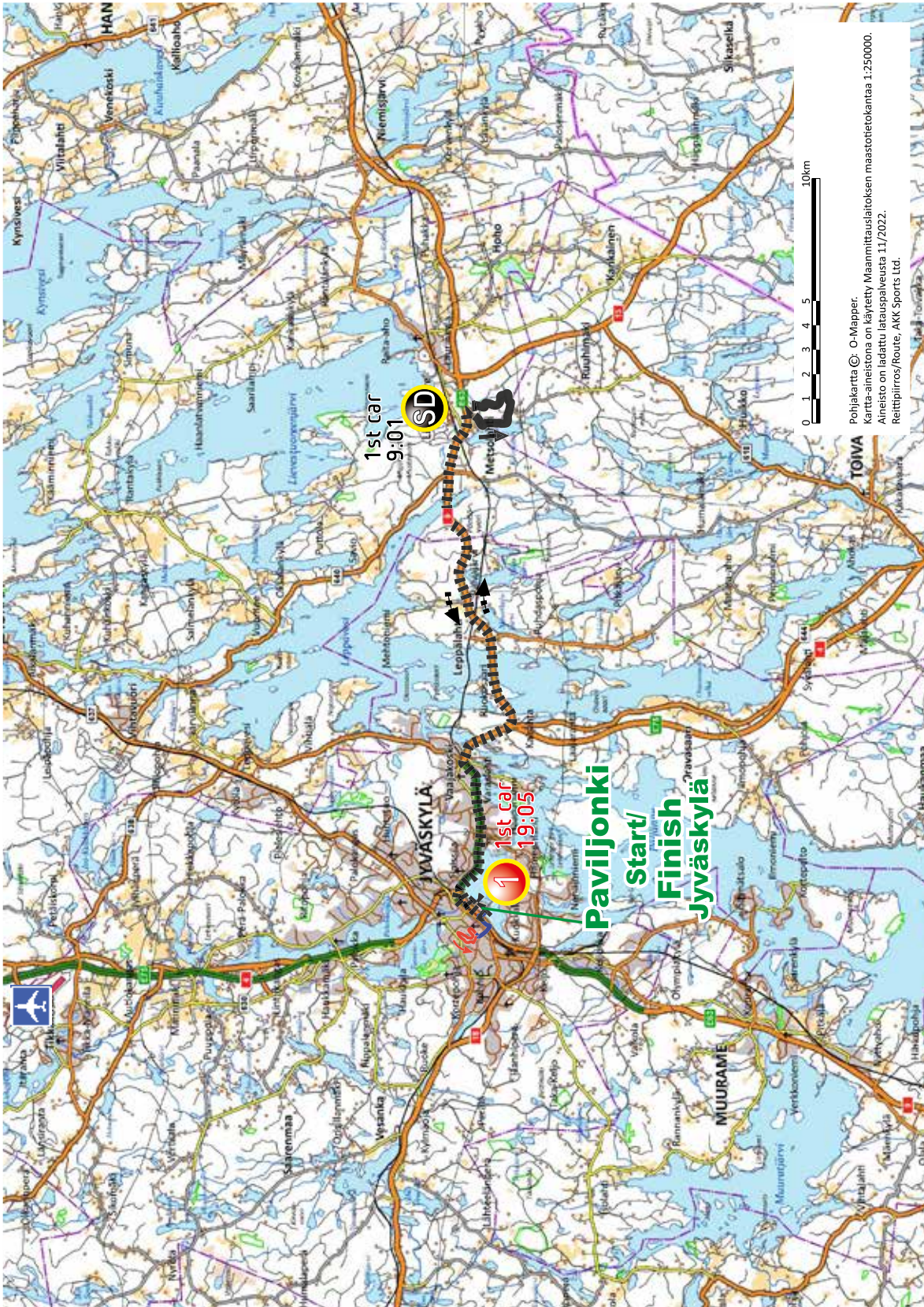
Group A	Allowed Time	SS km	Total SS km (x2)	Finish 1 / Start 2	To Next SS	Total km
Service Park, Paviljonki					1,89 SS 1/10	1,89
SS 1/10 Harju	16:00 - 17:00	2,58	5,16	0,35 SS 1/10	1,77 SP	7,28
Total						9,17

Group B	Allowed Time	SS km	Total SS km (x2)	Finish 1 / Start 2	To Next SS	Total km
Service Park, Paviljonki					1,89 SS 1/10	1,89
SS 1/10 Harju	15:00 - 16:00	2,58	5,16	0,35 SS 1/10	1,77 SP	7,28
Total						9,17

ver. 03032026

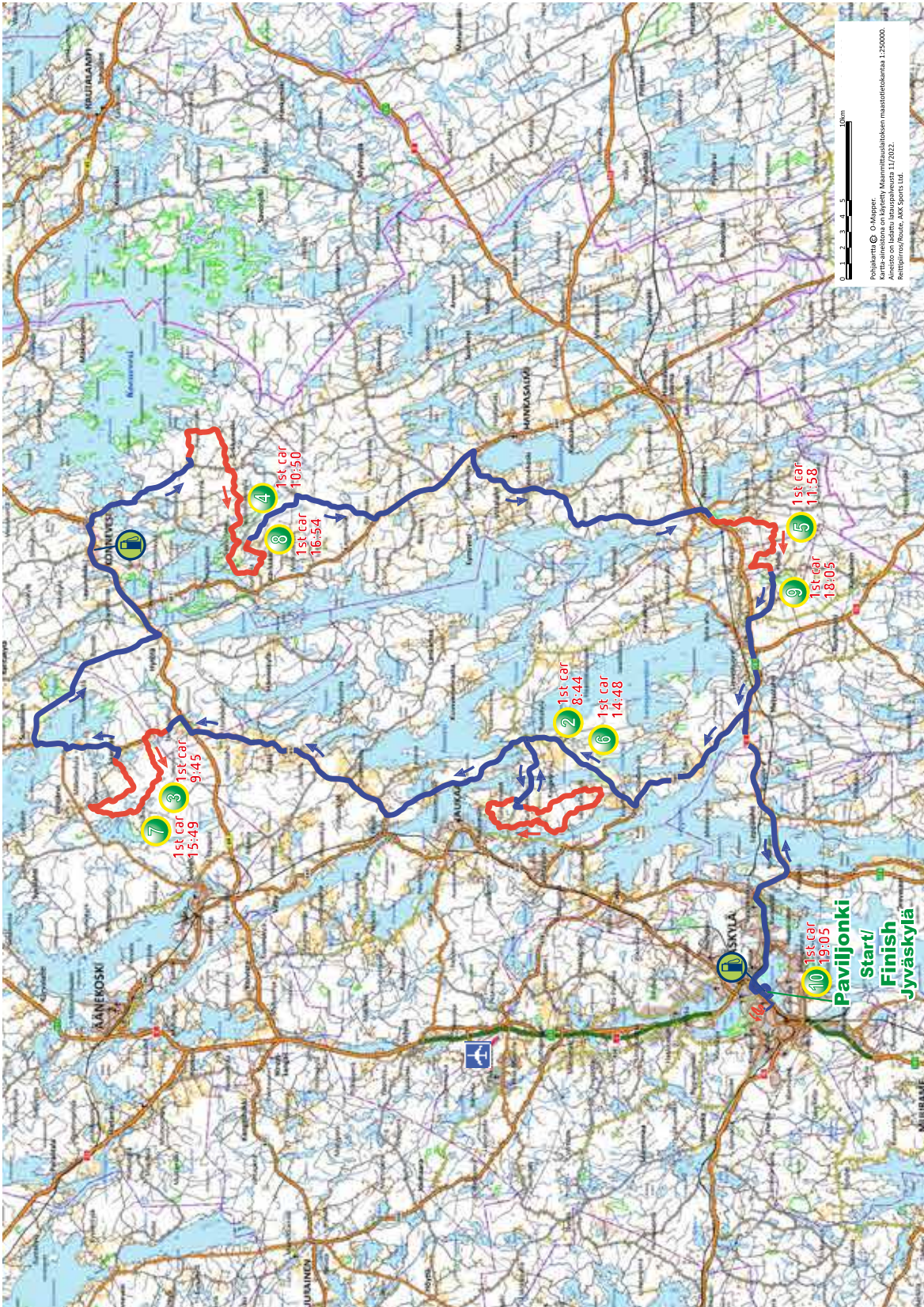


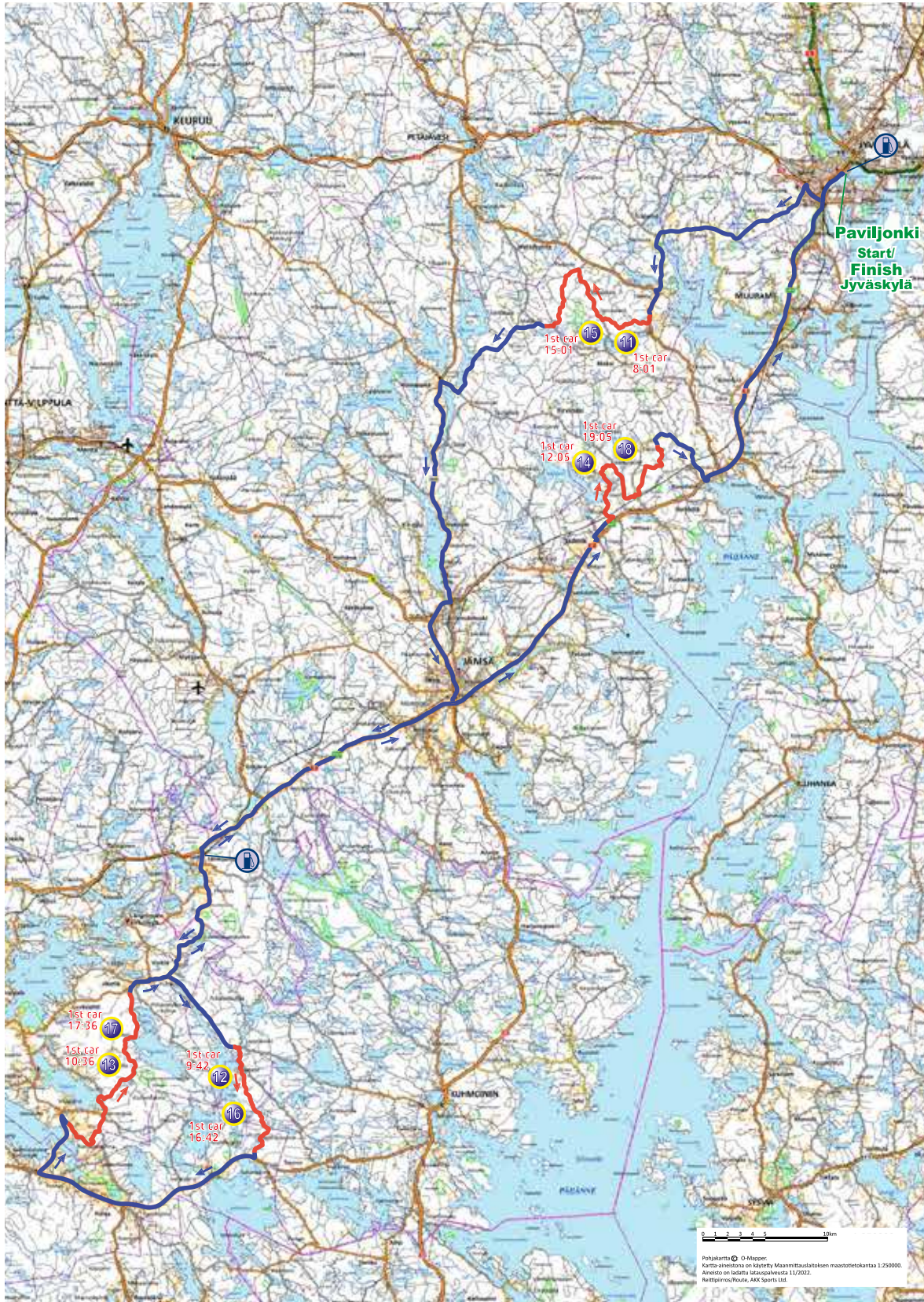
Jyväskylä City 2026



APPENDIX 4 / DAYMAPS

FRIDAY 31 JULY - SECTIONS 2 - 3



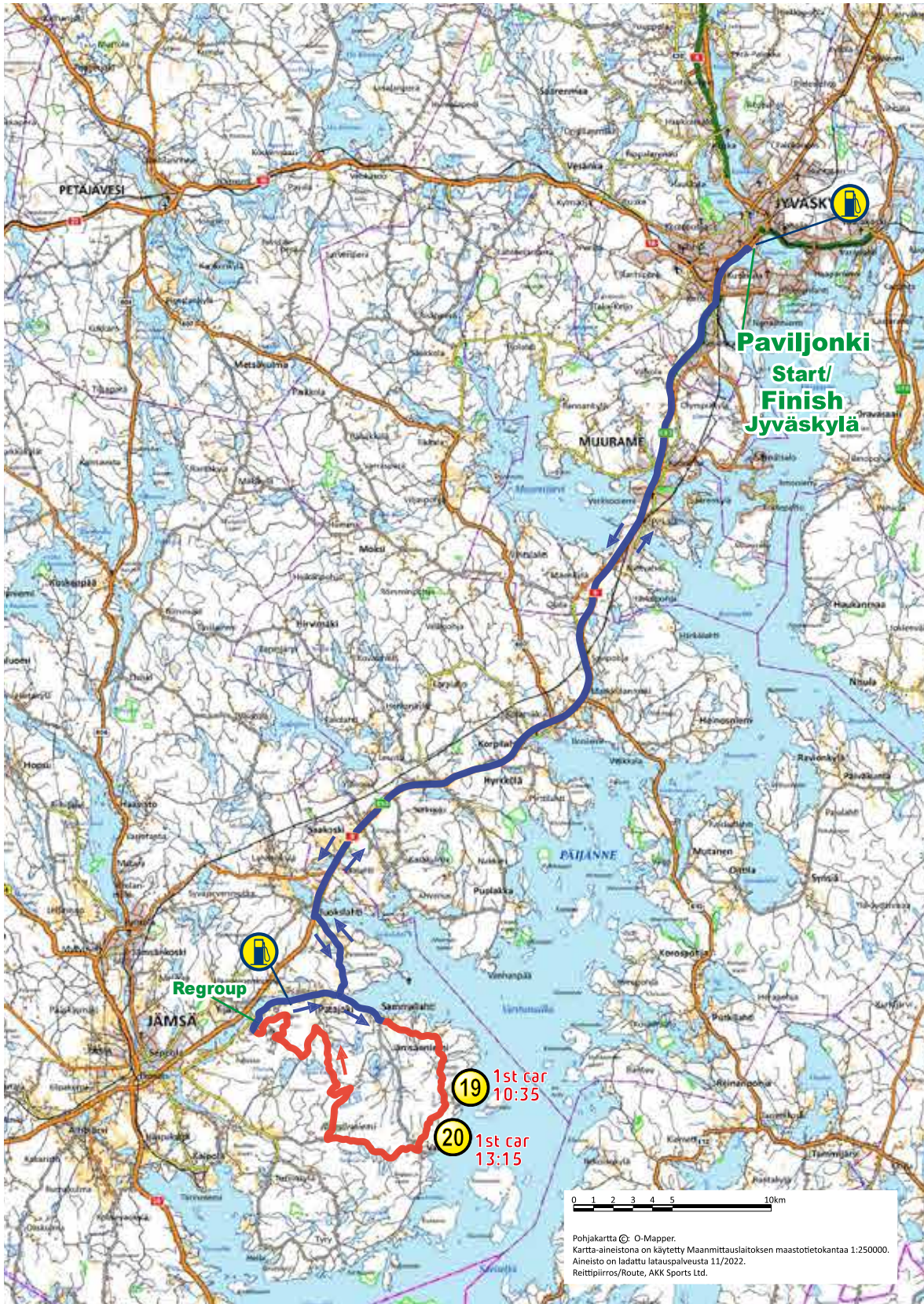


APPENDIX 4 / DAYMAPS

SUNDAY 2 AUGUST - SECTIONS 6 - 7

20
26

Rally Guide 1



TITLE SPONSOR

secto
automotive

OFFICIAL PARTNER

JYVÄSKYLÄ 

KS Keski-Suomi
Mellersta Finland
Central Finland

HIMOS
JÄMSÄ

Capital Box



MEDIA PARTNER



OFFICIAL SUPPLIER



outsourcit

AVOKI



TEISKONEN VIP



secto

RALLY FINLAND



ORGANISER OF SECTO RALLY FINLAND



#SectoRallyFinland

www.sectorallyfinland.fi

EVENT PARTNER



VALLILA



EVENT SUPPLIER



NOREX
SELECTED BRANDS SINCE 1981



RAMIRENT
A LOXAM Company



TOYOTA
MATERIAL HANDLING



LOCAL SUPPLIER

KÄRCHER

SOKOS HOTELS
ALCOHOL FREE ZONE - products



KUOKKALAN
KARTANO



jamk

JUBILEE
vuokraa astiat & kalusteet

KONNEVESI



AsahiKASEI

FORUM8
フォーラムエイト



REFLO

FANATEC

TATA COMMUNICATIONS