



PRESENTED BY:



***2024 RALLY COLORADO***  
**Advance Information Packet**  
*Includes SERVICE Information*

Part of the ARA West Regional Championship



Part of the California Rally Series



← Use this QR Code or the SPORTITY App to access the Notice Board, or go to:

<https://webapp.sportity.com/channel/COLORADO2024>

The password for the event is **COLORADO2024**

# Welcome to Rally Colorado!

## Table of Contents

WELCOME .....	3
EMERGENCY CONTACT NUMBERS.....	4
RALLY COMMUNICATIONS .....	5
CHECK-IN INFORMATION.....	6
RECCE CHECK-IN.....	7
RECCE PROCEDURES .....	7
STAGE LOCATIONS (GPS Coordinates).....	8
RALLYSAFE.....	10
RSLite will be used for RECCE .....	10
STAGE ITINERARY .....	11
DETAILED STAGE SCHEDULE .....	13
LOCAL AREA MAP.....	14
SERVICE AREA OVERVIEW MAP .....	15
SERVICE AREA DETAIL MAP .....	16
TRAILER PARKING MAP.....	17
SATURDAY OVERVIEW MAP .....	18
SUNDAY OVERVIEW MAP .....	19
STAGE 1/4 MAP (Valley of the Gods).....	20
STAGE 2/5 MAP (Quest for Darwin) .....	21
STAGE 3/6 MAP (Earl's Revenge).....	22
STAGE 7/10 MAP (Douglas Creek) .....	23
STAGE 8/11 MAP (Dragon Trail) .....	24
STAGE 9/12 MAP (Presser) .....	25
SCRUTINEERING .....	26
ADDITIONAL SERVICE INFORMATION.....	26
California Rally Series INFORMATION.....	27
SATURDAY Volunteer/Local Appreciation BBQ .....	28
SUNDAY Awards.....	28

# WELCOME

We are excited to have everyone back in Rangely for this event! On behalf of the entire Organizing Committee and the local community, thank you for supporting the rally, Rio Blanco County, and businesses in the area.

- We will again be hosting a Parc Expose at the Rangely Automotive Museum, followed by the Ceremonial Parade through downtown Rangely.
- The course will be made up of six different stages, each run twice the same day, with a service in between.
  - Saturday is made up of 2 challenging loops to the north and east of town featuring intriguing terrain and varied road conditions on the stages.
  - Sunday's competition, to the south of Rangely, will challenge competitors with stunning vistas and mountain switchbacks, with an old favorite back again plus the new short-and-sweet stage.
- **This year the rally will use the RallySafe tracking and timing system**, and will also use the RSlite application for recce..
- Service will be held both days in the same location on a large grass surface - in Elks Park, which is located just a few blocks south of the host hotel (the Blue Mountain Inn).
  - Nearby in downtown is food, ice, auto parts, gas, hardware stores, etc.
  - The service park is full of trees, public restrooms, and covered areas for shade.
  - There will be lots of open grassy space, so feel free to bring a ball of one sort or another for crews to pass the down time.
  - Concessions may be available in the service park, plan ahead and bring cash.
- For weather, we are anticipating highs in the 90's and lows in the 60's, be prepared with sunscreen and plenty of water!
- Merchandise will be available for purchase at Park Expose and Registration/Service.
- Drugs are strictly prohibited during the event.
- **Please note per the SUPPLEMENTAL REGULATIONS – there will not be printed copies of this document – please print your own copies for the competitor and crew.**

**The Rally Colorado Organizing Team** *thanks you!*

# EMERGENCY CONTACT NUMBERS

## Use 911 for Emergencies

<b>Law Enforcement</b>	Rio Blanco County Sheriff		<b>911</b>
	Rangely Police Department	209 E Main St. Rangely, CO	<b>911</b> (970-675-8466)
<b>Fire Department</b>	Rangely Fire Department	725 E Nichols St. Rangely, CO	<b>911</b> (970-878-9620)
	Rio Blanco Fire Department	236 7th St. Meeker, CO	<b>911</b> (970-878-9620)
<b>Emergency</b>	Rangely EMS		<b>911</b> (970-878-9620)
	Rangely District Hospital <i>(Level IV Trauma Center)</i>	225 Eagle Crest Dr. Rangely, CO	970-675-5011
	St. Mary's Medical Center <i>(Level II Trauma Center)</i>	2635 N 7 <sup>th</sup> St. Grand Junction, CO	970-298-2273
<b>Rally Hotel</b>	Blue Mountain Inn		970-675-8888
<b>Chairman</b>	Rupert Berrington	<a href="mailto:rupertberr@me.com">rupertberr@me.com</a>	303-349-7861
<b>Clerk of the Course</b>	Rob Bohn	<a href="mailto:robbohn@outlook.com">robbohn@outlook.com</a>	317-877-0303

# RALLY COMMUNICATIONS

The Rally will use a directed Safety Net via a combination of 2m Amateur Radio frequencies; stages are run with their own frequency, and they communicate to NET CONTROL via a dedicated COMM CAPTAIN on an “executive” frequency.

Because of remoteness and the terrain, cellular phone access is intermittent.

*Frequencies may change if conditions change; below is the current plan.*

## Rally Colorado 2024 - Frequency Plan

<i>Stage Activity Comms</i>			Stage Activity Simplex Frequencies	
Day	Stage #	Stage Name	Primary	Secondary
Sat	1 / 4	Valley of the Gods	146.460	146.490
Sun	8 / 11	Dragon Trail	No Tone	No Tone

<i>Stage Activity Comms</i>			Stage Activity Simplex Frequencies	
Day	Stage #	Stage Name	Primary	Secondary
Sat	2 / 5	Quest for Darwin	147.420	147.450
Sun	9 / 12	Presser East	No Tone	No Tone

<i>Stage Activity Comms</i>			Stage Activity Simplex Frequencies	
Day	Stage #	Stage Name	Primary	Secondary
Sat	3 / 6	Earl's Revenge	146.550	146.580
Sun	7 / 10	Douglas Cr.	No Tone	No Tone

<i>Executive Frequency to Net Control</i>			147.510 No Tone	147.570 No Tone
---	--	--	--------------------	--------------------

<i>Cross-Band to Net Control</i>	Cross-Band Simplex Frequencies	
	Primary	Secondary
Comm Cpts and Mobile Operators	146.430 No Tone	147.540 No Tone
Net Control	440.700 No Tone	440.750 No Tone

# CHECK-IN INFORMATION

Competitors, crew, media, and volunteers **MUST** be licensed and pre-registered, and must have passed all administrative checks prior to the event.

**ALL** team and crew members and media **must** hold an ARA license and be registered; details are in the Supplemental Regulations.

Once licensed and registered, you then must check-in at the event during the dates and times listed in the Supplemental Regulations. Check-in is at the **west end of Elks Park**.

- Technically this is **903 Taos Drive** but use the GPS location 40.082842, -108.812255 **or** go SOUTH on RIVER RD and follow the arrows on the map below to the check-in location:



- Present your registration info to the check-in volunteer.
- Each Team will receive:
  - 1 Wristband for each: Drive/Co-Driver/Crew Member
  - 2 Event Headers
  - 1 Competitor Routebook
  - 1 Recce Identification – place on passenger-side windshield of recce vehicle
  - California Rally Series stickers
  - Rally Colorado Stickers

# RECCE CHECK-IN

Prior to Recce, BOTH competitors MUST check-in *per the previous page*. Both driver and co-driver must be present in their recce vehicle.

## RECCE PROCEDURES

You will need your route book, these recce instructions, and the Recce Identification on your recce vehicle. *See the Supplemental Regulations for specific rules.*

- Recce is allowed only during the schedule listed in the Supplemental Regulations.
  - We will have workers on the stages before and during recce. They are always alert for unauthorized driving of the stages.
- Note you must be back for **Friday's mandatory Parc Expose then Parade**, per the schedule listed in the Supplemental Regulations.
  - Note you must enter Parc Expose between the times shown in the Supps.
- Drive with your headlights ON
- **SPEED LIMIT IS 30mph** on the stages; take your time.
- **All stages are ONE WAY**, the same direction as in the routebook
  - **you are not allowed to go reverse direction**
- There may be an Observation Control.
- During recce you may encounter oncoming traffic, off-highway vehicles (OHV, UTV, SXS), road graders, gas & oil workers, livestock (moo), wild trampling horses (neigh), residents (hey!), and our stage crews (yay). **Please use appropriate caution while driving** – there are many corners and crests on the stage roads where visibility is very limited.
- **RallySafe LITE (RSlite) will be used for recce, and is required**. See the Rally Safe section.
- GPS locations for controls and midpoints are below.

# STAGE LOCATIONS (GPS Coordinates)

<b>SATURDAY</b>		
SVC OUT/EIk's Park	40.082874	-108.811821
<b>ATC Valley of the Gods EASTBOUND CR 131</b>	40.079224	-108.739883
SSS Valley of the Gods	40.078804	-108.739822
<b><i>Midpoint: Medical &amp; Radio</i></b>	40.047230	-108.669838
FF Valley of the Gods	40.079286	-108.644072
FTC Valley of the Gods	40.080921	-108.640244
<b>ATC Quest for Darwin WESTBOUND CR 73</b>	40.185528	-108.560127
SSS Quest for Darwin	40.186480	-108.559124
FF Quest for Darwin	40.178463	-108.710991
FTC Quest for Darwin	40.176285	-108.710007
<b>ATC Earl's Revenge WESTBOUND CR 96</b>	40.204464	-108.755371
SSS Earl's Revenge	40.24895	-108.757118
<b><i>Midpoint: Medical &amp; Radio</i></b>	40.211292	-108.809212
FF Earl's Revenge	40.188694	-108.868782
FTC Earl's Revenge	40.190613	-108.870094
SVC IN/EIk's Park	40.082561	-108.812012



<b>SUNDAY</b>		
SVC OUT/Elk's Park	40.082874	-108.811821
<b>ATC Douglas Creek NORTHBOUND CR 138</b>	40.010367	-108.776796
SSS Douglas Creek	40.009735	-108.776726
<i>Midpoint: Medical &amp; Radio</i>	40.031204	-108.733780
FF Douglas Creek	40.061127	-108.767357
FTC Douglas Creek	40.060917	-108.769485
<b>ATC Dragon Trail NORTHWESTBOUND CR 113 &amp; CR 116</b>	39.82472	-108.83122
SSS Dragon Trail	39.824623	-108.832558
<i>Midpoint: Medical &amp; Radio</i>	39.858662	-108.878380
FF Dragon Trail	39.911324	-108.894951
FTC Dragon Trail	39.912861	-108.896576
<b>ATC Presser EASTBOUND CR 104</b>	40.068836	-108.794094
SSS Presser	40.068691	-108.794067
FF Presser	40.069916	-108.776787
FTC Presser	40.069500	-108.773201
SVC IN/Elk's Park	40.082561	-108.812012

# RALLYSAFE

The rally will use the RallySafe tracking and timing system, and a RallySafe unit must be installed in the competitor vehicle to compete.

If needed, rental RallySafe fitting kits are \$40 each; ***they must be ordered and paid for during online entry.***

**RallySafe is the primary timing system;** timecards will still be used as they are the ultimate source of truth if issues occur with RallySafe - the accuracy of timecards is the competitor's responsibility.

Further information on RallySafe is available here: <https://www.americanrallyassociation.org/rally-safe>

## RSLite will be used for RECCE

Please make sure you review this info and ARA Bulletin 2024-4 before you arrive at check in.

It requires an iPhone or Android phone with data. You MUST have data active on the phone while tracking and it cannot be in airplane mode.

The speed limit shown on the app will include the 5MPH buffer allowed within the ARA rules. So, if the speed limit is 25MPH, the app will show 30MPH. This means, if the app shows you as speeding, you are IN the range to which penalties may be applied.

- Most of the issues we have seen with the app are due to an outdated version being used. Make sure you have automatic updates on and that you are using the latest version of the app. The newest version for Apple and Android is 1.11.7. Go to SETTINGS to see the version you have.
- Be prepared to have the app checked when you arrive at check in. We may be making sure the most recent version of the app is in use to minimize issues.
- You will receive the unique INVITE code (log in code) when you check in to the event.
- We have received questions regarding the app data usage. When being used, expect approximately 0.2MB of data usage per hour.
- **To start tracking, you are required to be in cell service. Make sure to start tracking before going out on the stages, as connection can be spotty.**
- Activate the "Always" tracking option in your phone settings for the app. This can be disabled after recce.
- The app will only be operating/tracking if it is active on the screen. *It does not operate to full capacity in the background.* When you are on the stages, the app must be active.

If you have any questions or issues before the event, please contact Preston at [preston@ara-rally.com](mailto:preston@ara-rally.com) or 720-646-4331.

# STAGE ITINERARY

This version supersedes the version in the Supplemental Regulations; the Routebook has this same version.

TOTALS OF THE RALLY				
	SS	TRANSIT	TOTAL	%
SATURDAY Leg 1 (Section 1 & 2)	67.56	61.62	129.18	52%
SUNDAY Leg 2 (Section 3 & 4)	47.48	93.40	140.88	34%
<b>Total -- 12 SS</b>	<b>115.04</b>	<b>155.02</b>	<b>270.06</b>	<b>43%</b>

START (Leg 1 / Section 1 & 2)										SATURDAY	
TC	LOCATION	SS DIST	TRANSIT DIST	TOTAL DIST	LATENESS TIME	TRANSIT TIME	FIRST CAR DUE				
0	MTC OUT (Rangely)						10:00				
	distance to next refuel	(33.78)	(30.81)	(64.59)							
	<i>transit</i>		5.14	5.14		00:16	10:16				
SS 1	Valley of the Gods CR131 eastbound	12.86		18.00	00:21		10:19				
2	<i>Transit</i>		12.90	30.90		00:31	11:11				
SS 2	Quest for Darwin CR73 Westbound	10.79		41.69	00:15		11:14				
3	<i>Transit</i>		3.11	44.80		00:15	11:44				
SS 3	Earl's Revenge CR96 Westbound	10.13		54.93	00:18		11:47				
3A	SERVICE IN		9.66	64.59		00:21	12:26				
	SERVICE C										
3B	SERVICE OUT -- REGROUPING IN		0.00			00:45	13:11				
3C	REGROUPING OUT		0.02			00:15	13:26				
RZ	REFUEL										
	distance to next refuel	(33.78)	(30.81)	(64.59)							
4	<i>transit</i>		5.14	5.14		00:21	13:47				
SS 4	Valley of the Gods CR131 eastbound	12.86		18.00	00:21		13:50				
5	<i>Transit</i>		12.90	30.90		00:31	14:42				
SS 5	Quest for Darwin CR73 Westbound	10.79		41.69	00:15		14:45				
6	<i>Transit</i>		3.11	44.80		00:15	15:15				
SS 6	Earl's Revenge CR96 Westbound	10.13		54.93	00:18		15:18				
6A	MTC IN (Rangely)		9.66	64.59		00:21	15:57				
	Saturday Totals	67.56	61.62	129.18							

START (Leg 2 / Section 3 & 4)								SUNDAY	
TC	LOCATION		SS DIST	TRANSIT DIST	TOTAL DIST	LATENESS TIME	TRANSIT TIME	FIRST CAR DUE	
7	MTC OUT (Rangely)							10:00	Section 3
	distance to next refuel		(23.74)	(46.70)	(70.44)				
	<i>transit</i>			8.05	8.05		00:18	10:18	
SS 7	Douglas Creek CR138 northbound		10.68		18.92	00:21		10:21	
8	<i>transit</i>			21.94	40.58		00:43	11:25	
SS 8	Dragon Trail CR116/CR113 northwest		12.07		52.78	00:18		11:28	
9	<i>transit</i>			12.89	65.67		00:30	12:16	
SS 9	Presser CR104 east		0.99		66.66	00:05		12:19	
9A	SERVICE IN			3.82	70.48		00:15	12:39	
	SERVICE A								
9B	SERVICE OUT / REGROUPING IN						00:45	13:24	Leg 2
9C	REGROUPING OUT						00:15	13:39	
RZ	REFUEL								Section 4
10	distance to next refuel		(23.74)	(46.70)	(70.44)				
	<i>transit</i>			8.05	8.05		00:23	14:02	
SS 10	Douglas Creek CR138 northbound		10.68		18.92	00:21		14:05	
11	<i>transit</i>			21.94	40.58		00:43	15:09	
SS 11	Dragon Trail CR116/CR113 northwest		12.07		52.78	00:18		15:12	
12	<i>transit</i>			12.89	65.67		00:30	16:00	
SS 12	Presser CR104 east		0.99		66.66	00:05		16:03	
12A	MTC IN (Rangely)			3.82	70.48		00:15	16:23	
	Sunday Totals		47.48	93.40	140.88				

# DETAILED STAGE SCHEDULE

V1

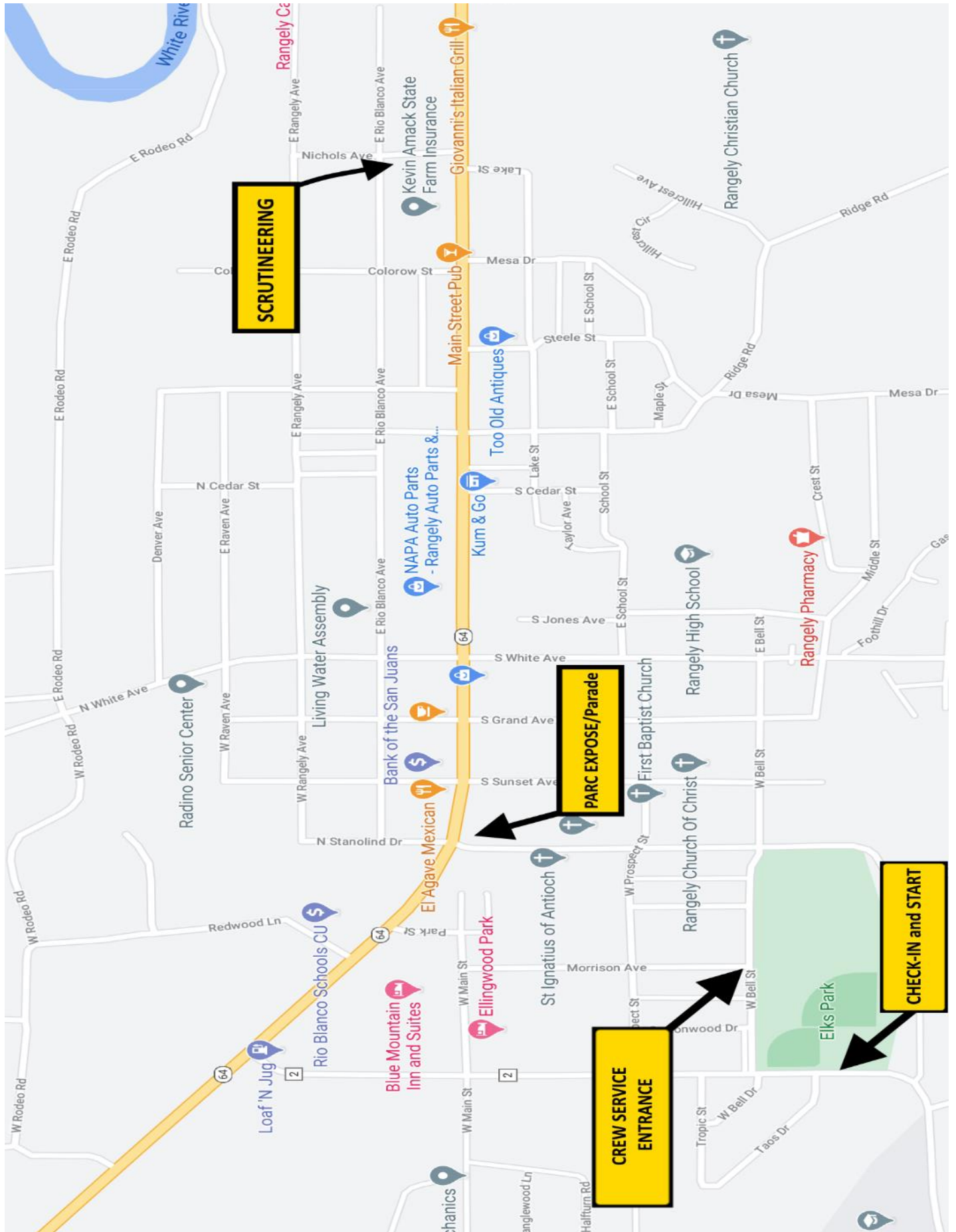
000

00

0

SATURDAY																										
TRANSIT				STAGE								STAGE CREW						08:45 MTC OUT			09:05 MTC OUT			09:25 MTC		SWEEP
Ctrl	FCO	Transit Distance	Transit Time	Stage	Name	First Car In	First Car Off	Stage Distance	Lateness Time	First Car Finish	Last Car Finish	Leaves For Stage	Approx Transit Elks Park	Arrives @ATC	Stage Setup Time	Stage Manned & Ready	Starts Stage	Stage Travel Time	Finishes Stage	Starts Stage	Stage Travel Time	Finishes Stage	Starts Stage	Finishes Stage	Sweeps START	
MTC OUT	10:00	5.14	0:16	TC1	Valley of the Gods CR 131	10:16	10:19	12.86	0:21	10:40	11:10	7:05	0:45	7:50	1:24	9:14	9:19	0:42	10:01	9:31	0:34	10:05	9:52	10:11	11:10	
		12.90	0:31	TC2	Quest for Darwin CR73	11:11	11:14	10.79	0:15	11:29	11:59	8:44	0:25	9:09	1:00	10:09	10:14	0:32	10:46	10:33	0:26	10:30	10:55	11:06	11:59	
		3.11	0:15	TC3	Earl's Revenge CR 96	11:44	11:47	10.13	0:18	12:05	12:35	9:10	0:20	9:30	1:12	10:42	10:47	0:37	11:24	11:06	0:30	11:02	11:27	11:39	12:35	
SVC3		9.66	0:21	TC3A	Service 1 IN	12:26	SERVICE		0:45	13:11	13:41			12:18	0:10	12:28	12:33	0:45	13:18	12:53	0:45	12:48	13:13	12:21		
				RGC	Regrouping IN	13:11	REGROUPING		0:15	13:26	13:56			12:16	0:10	12:26	12:31	0:15	12:46	12:41	0:15	12:36	12:51	13:06		
RGC OUT	13:26	5.14	0:21	TC4	Valley of the Gods CR 131	13:47	13:50	12.86	0:21	14:11	14:41	already setup				12:50	0:42	13:32	13:01	0:34	12:58	13:23	13:42	14:41		
		12.90	0:31	TC5	Quest for Darwin CR73	14:42	14:45	10.79	0:15	15:00	15:30	already setup				13:45	0:32	14:17	14:04	0:26	14:01	14:26	14:37	15:30		
		3.11	0:15	TC6	Earl's Revenge CR 96	15:15	15:18	10.13	0:18	15:36	16:06	already setup				14:18	0:37	14:55	14:37	0:30	14:33	14:58	15:10	16:06		
MTC		9.66	0:21	TC6A	MTC 1	15:57	END OF DAY										15:12	0:00	15:12	15:32	0:00	15:27	15:52	15:52	0:00	
SUNDAY																										
TRANSIT				STAGE								STAGE CREW						08:30 MTC OUT			08:55 MTC OUT			09:20 MTC		SWEEP
Ctrl	FCO	Transit Distance	Transit Time	Stage	Name	First Car In	First Car Off	Stage Distance	Lateness Time	First Car Finish	Last Car Finish	Leaves For Stage	Approx Transit Elks Park	Arrives @ATC	Stage Setup Time	Stage Manned & Ready	Starts Stage	Stage Travel Time	Finishes Stage	Starts Stage	Stage Travel Time	Finishes Stage	Starts Stage	Finishes Stage	Sweeps START	
RGC OUT	10:00	8.05	0:18	TC7	Douglas Creek CR138	10:18	10:21	10.68	0:21	10:42	11:12	6:57	0:45	7:42	1:24	9:06	9:11	0:42	9:53	9:30	0:34	10:04	9:53	10:13	11:12	
		21.94	0:43	TC8	Dragon Trail CR 116/113	11:25	11:28	12.07	0:18	11:46	12:16	8:46	0:25	9:11	1:12	10:23	10:28	0:37	11:05	10:42	0:30	10:37	11:02	11:20	12:16	
		12.89	0:30	TC9	Presser CR 104	12:16	12:19	0.99	0:05	12:24	12:54	10:57	0:20	11:17	0:20	11:37	11:42	0:14	11:56	11:57	0:12	11:48	12:12	12:11	12:54	
SVC2		3.82	0:15	TC9A	Service 2 IN	12:39	SERVICE		0:45	13:24	13:54			12:08	0:10	12:18	12:23	0:45	13:08	12:38	0:45	12:53	12:58	12:34		
				RGC	Regrouping IN	13:24	REGROUPING		0:15	13:39	14:09			13:03	0:10	13:13	13:18	0:15	13:33	13:18	0:15	13:13	13:18	13:19		
RGC OUT	13:39	8.05	0:23	TC10	Douglas Creek CR138	14:02	14:05	10.68	0:21	14:26	14:56	already setup				12:55	0:42	13:37	13:14	0:34	13:12	13:37	13:57	14:56		
		21.94	0:43	TC11	Dragon Trail CR 116/113	15:09	15:12	12.07	0:18	15:30	16:00	already setup				14:12	0:37	14:49	14:26	0:30	14:21	14:46	15:04	16:00		
		12.89	0:30	TC12	Presser CR 104	16:00	16:03	0.99	0:05	16:08	16:38	already setup				15:26	0:14	15:40	15:41	0:12	15:31	15:56	15:55	16:38		
MTC		3.82	0:15	TC12A	MTC 2	16:23	END OF DAY										15:38	0:00	15:38	15:58	0:00	15:53	16:18	16:18		

# LOCAL AREA MAP





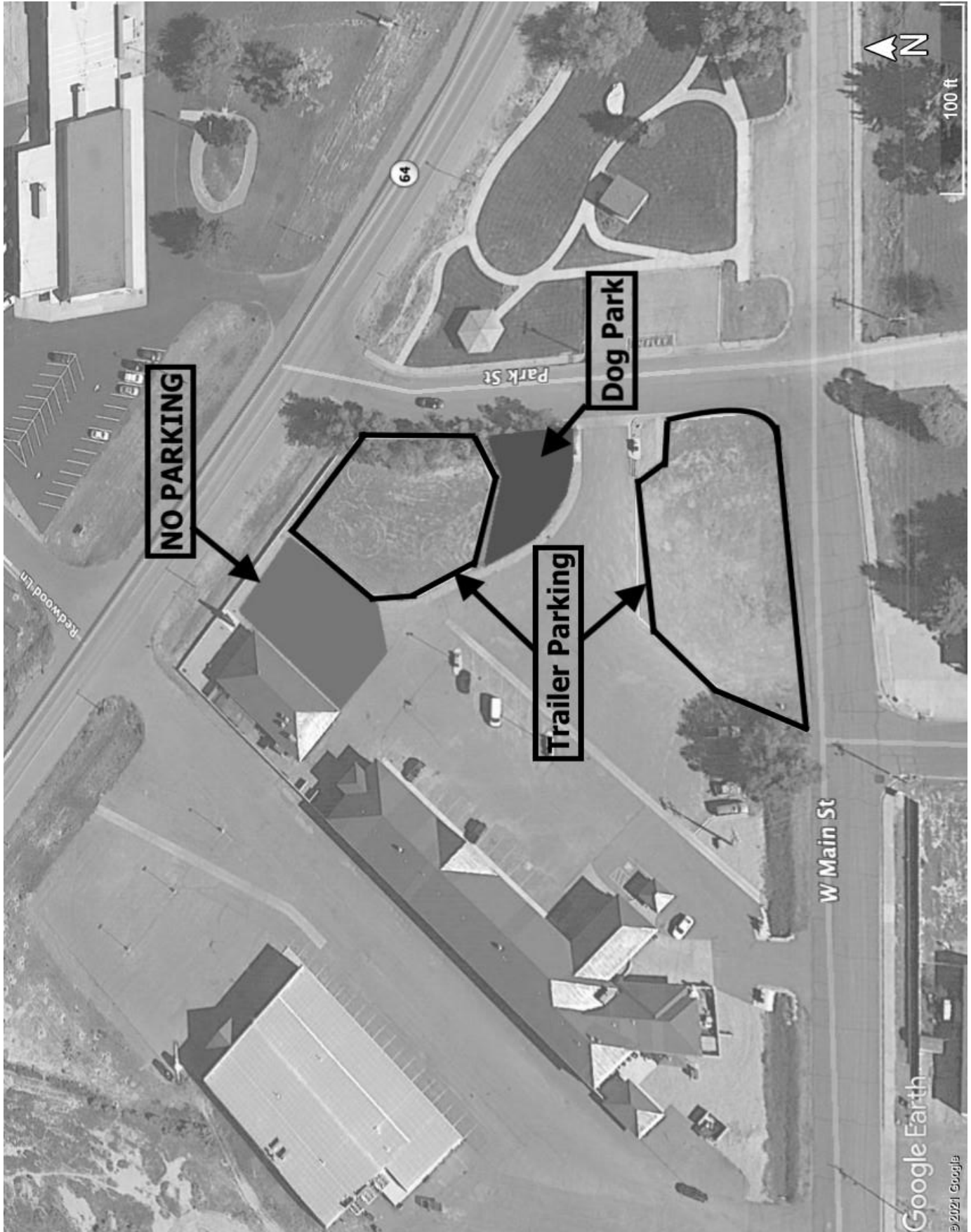
# SERVICE AREA DETAIL MAP



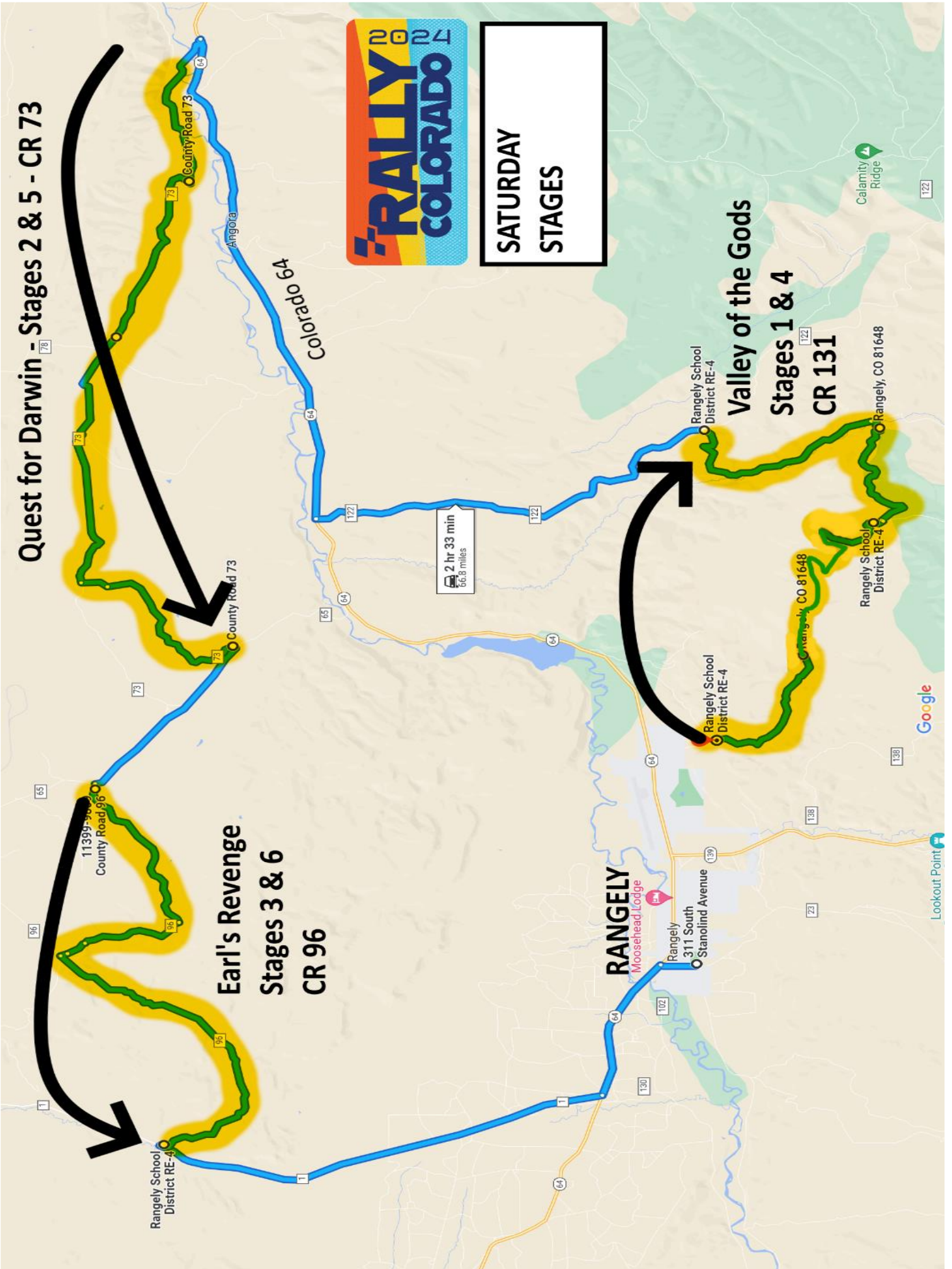


# TRAILER PARKING MAP

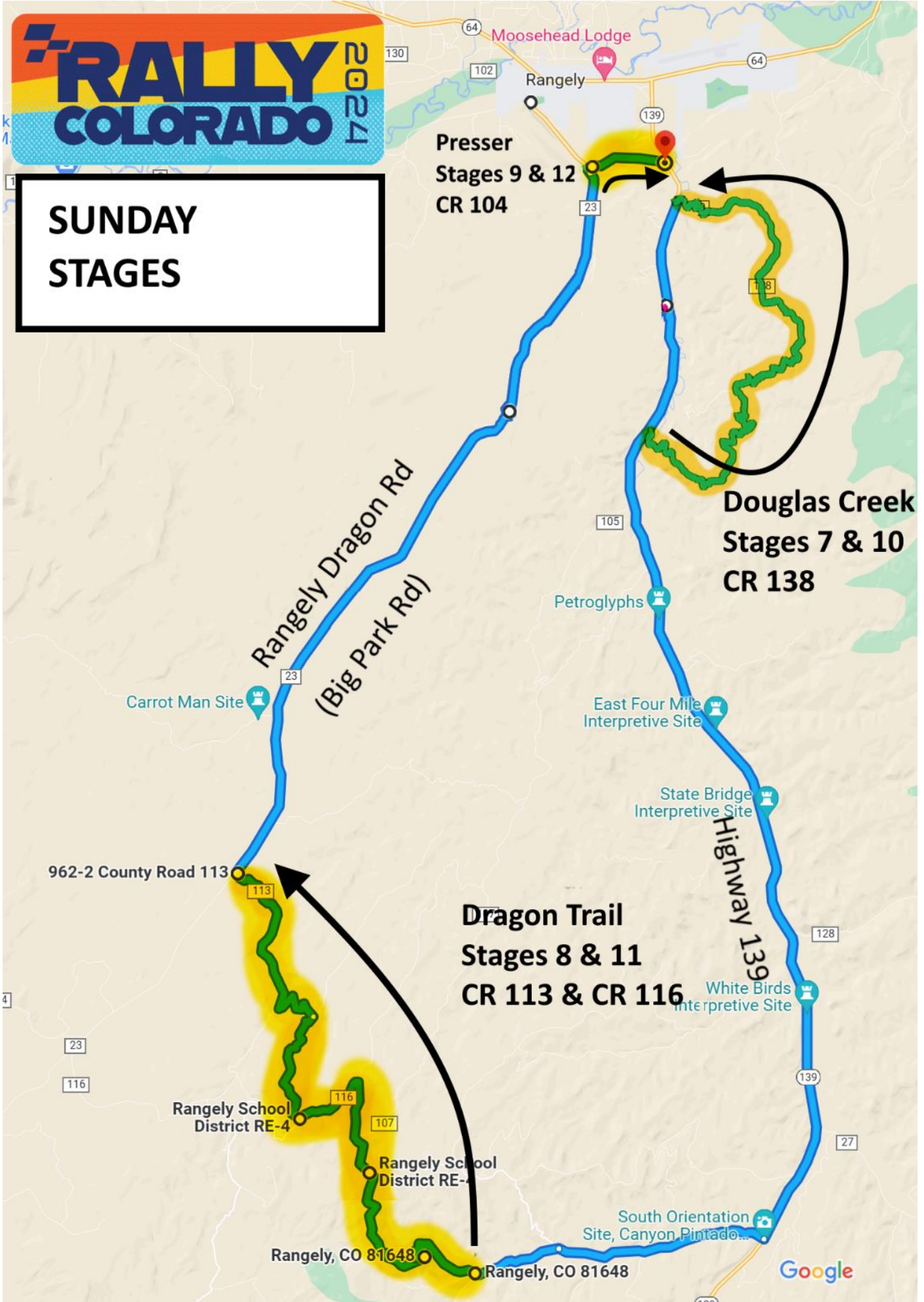
(at Blue Mountain Inn)



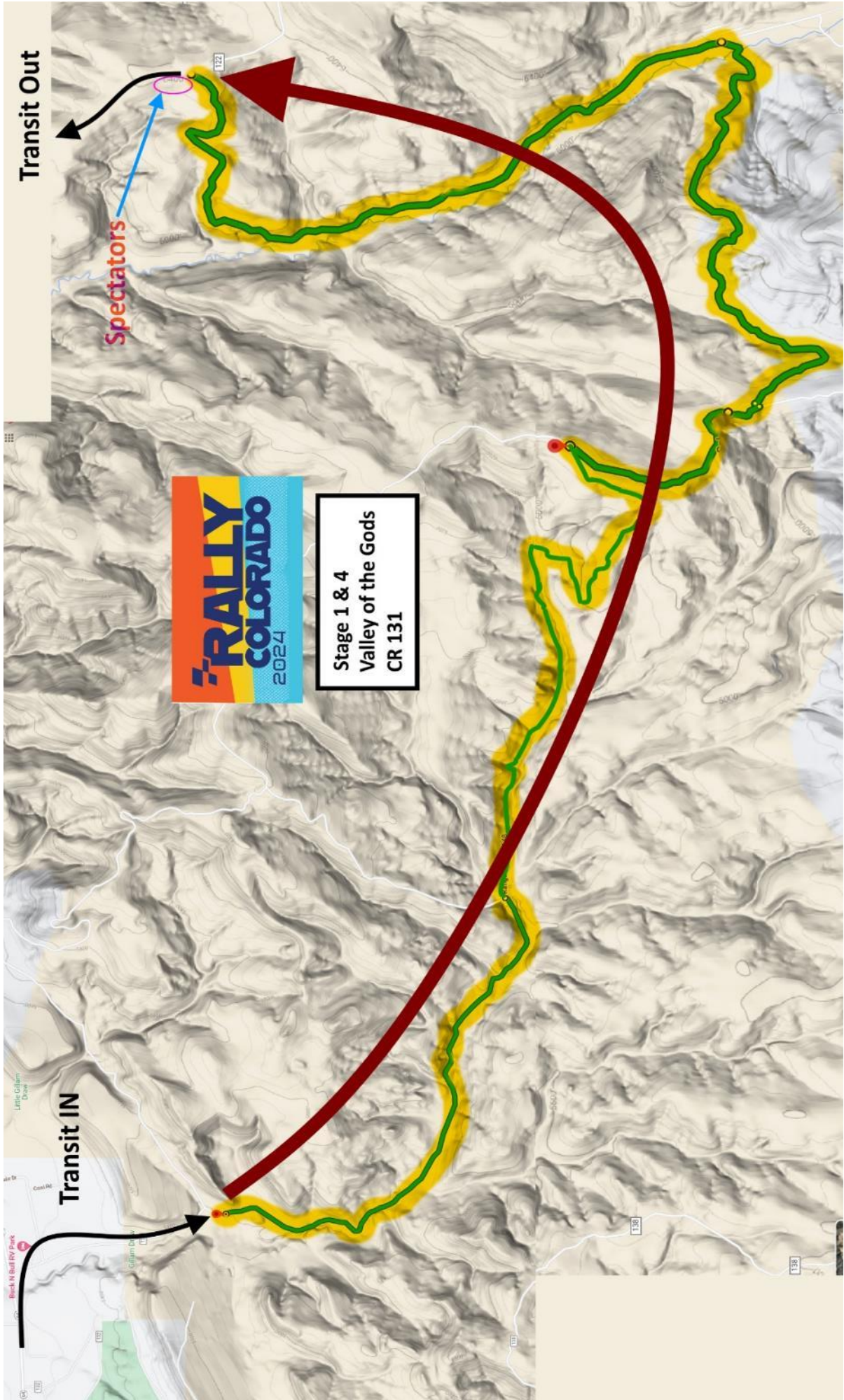
# SATURDAY OVERVIEW MAP



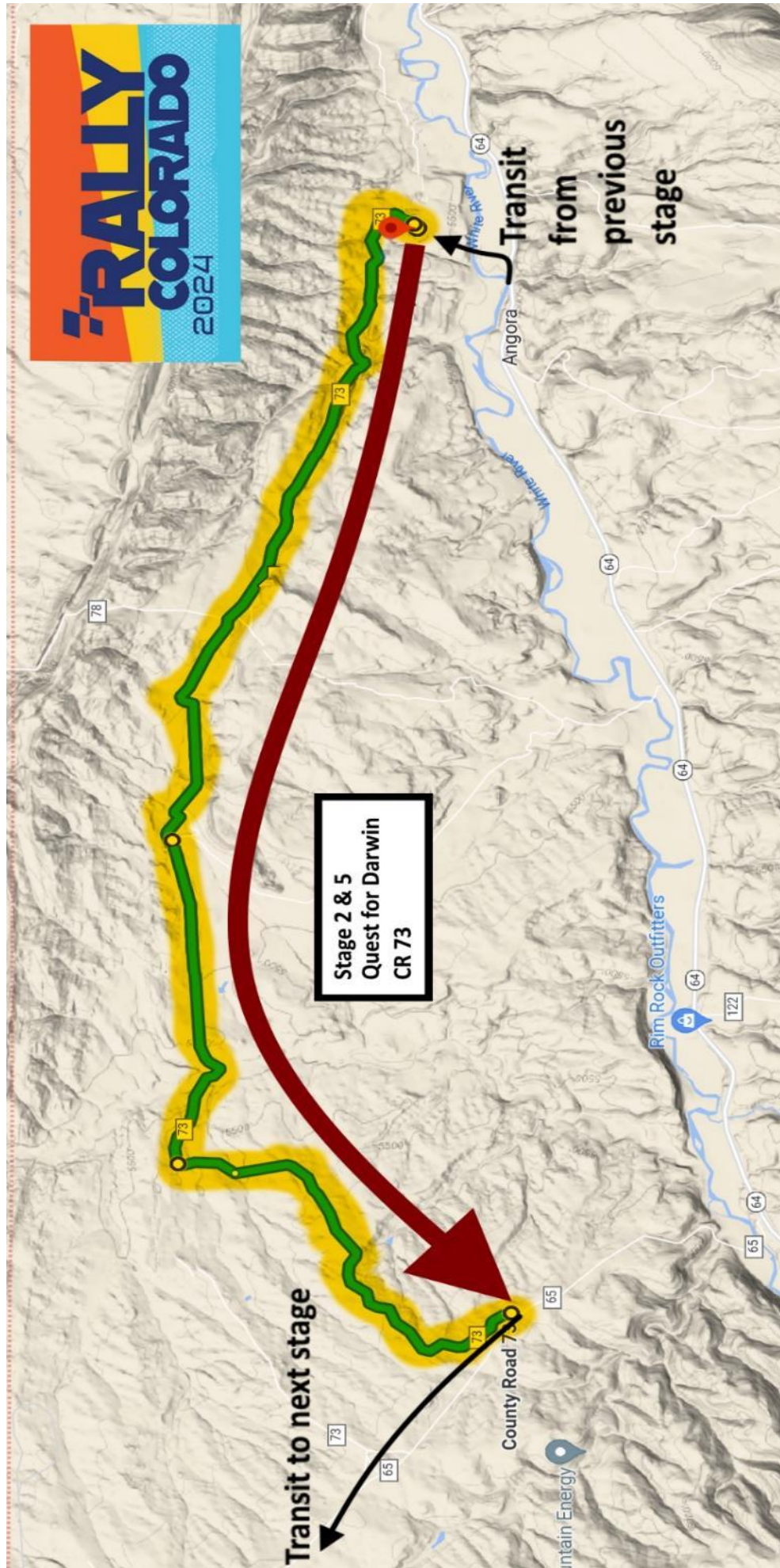
# SUNDAY OVERVIEW MAP



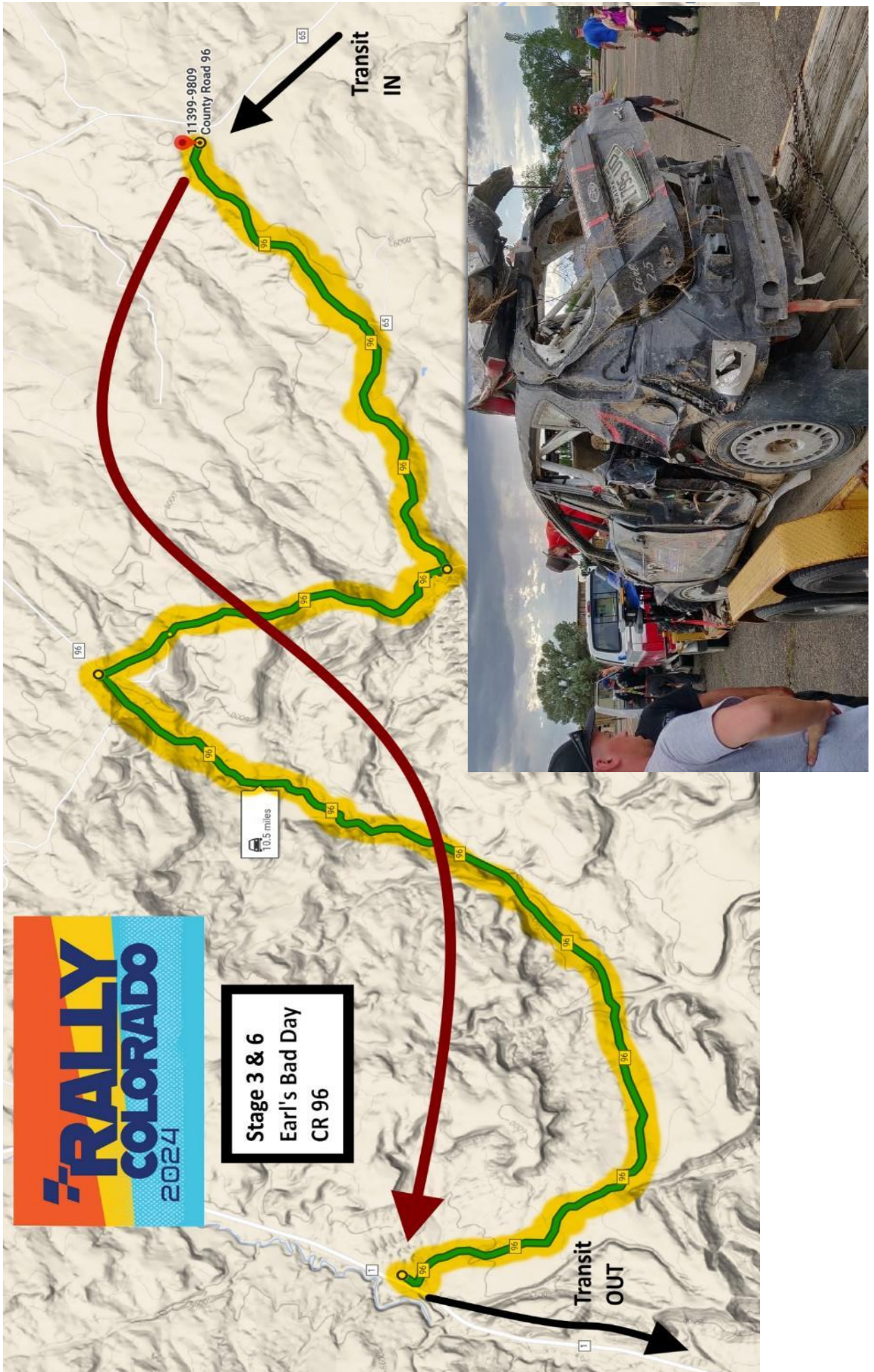
# STAGE 1/4 MAP (Valley of the Gods)



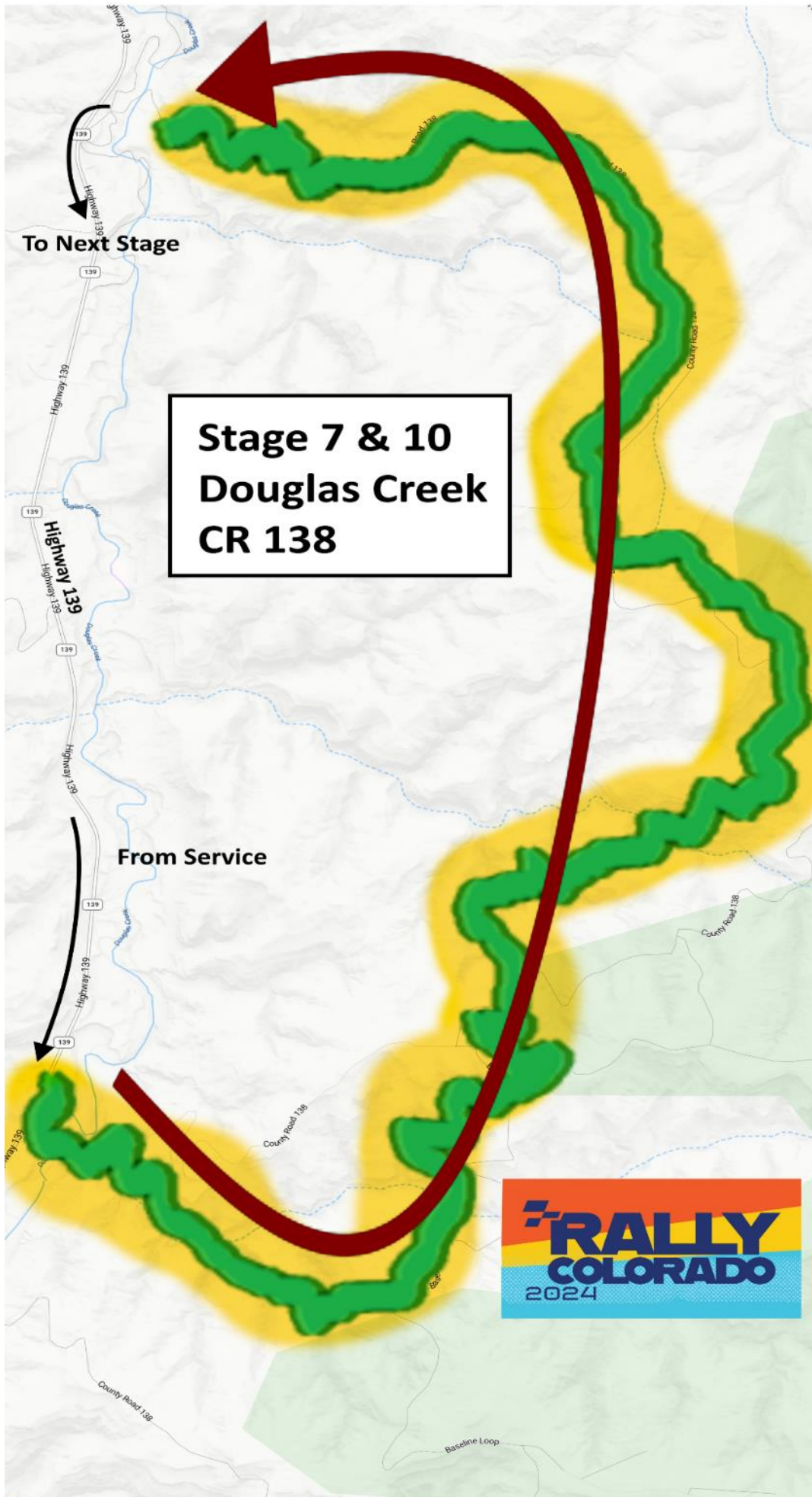
# STAGE 2/5 MAP (Quest for Darwin)



# STAGE 3/6 MAP (Earl's Revenge)



# STAGE 7/10 MAP (Douglas Creek)



# STAGE 8/11 MAP (Dragon Trail)





# STAGE 9/12 MAP (Presser)



# SCRUTINEERING

To ensure scrutineering can be done in a timely manner, per RCR 9.3.1 all event required stickers and identification are to be on the competition vehicle **prior** to scrutineering.

- Note we **require a metal shovel for spill cleanup & for fires**, per BLM request (Supplemental Regulations 10.5.e). Avoid using chemical-based fire extinguishers on the ground.
- Scrutineering is scheduled based on registration order, currently as follows:
  - 0830-1000 = Entries 1-6 = Cars 418, 722, 537, 902, 710, 163
  - 1000-1130 = Entries 7-12 = Cars 301, 397, 342, 352, 161, 302
  - 1130-1215 = Entries 13-18 = Cars 704, 62, 501, 495, 706, 937
  - **1215-1315 = Lunch break – NOT OPEN**
  - 1315-1400 = Entries 19-24 = Cars 399, 369, 512, 731
  - 1400-1700 = Open for all - by arrangement

**The above supersedes the schedule in Supplemental Regulations 10.4**, if you cannot make your scheduled time please use the last time slot. This schedule is as of 07/7/2024 1400 EDT; go to <https://www.sneakattackrally.com/ARACombinerThing/entryList.html?search=colo> for the most current list.

## ADDITIONAL SERVICE INFORMATION

Notes:

- **IMPORTANT:** the Director of the Rangely Parks & Recreation Department has requested that you **DO NOT USE TARPS in the Service Park** – it kills the grass (Supplemental Regulations 11.6).
- Teams that intend to restart after an issue or withdraw must follow the procedure in ***10.6 Withdrawing or Restarting/Rejoining*** of the **Supplemental Regulations**. Also review ***6.3 Restart after Retirement*** in the **Rally Competition Rules** when restarting/rejoining.
- Leave the area as clean as it was when you arrived – clean your trash, be careful with spills.
- Service Crews are allowed to leave the Service Area to spectate the Presser Stage (9 & 12) but note it is the last stage of each leg, so you have limited time to see your car and then make it back to the Service Area. This spectator location is 1.7 miles from the Service Area, at the **intersection of County Road 104 and White Avenue (that becomes Big Park Road)** GPS [40.067869, -108.794795](#). You are not allowed to deviate from the route of Bell Street to White Avenue/Big Park Road except for a gas stop.

# California Rally Series INFORMATION

The California Rally Series (CRS) is a non-profit organization formed by the event organizers and the officers of the series. The CRS has three major goals:

- Support event organizers.
- Provide championships with meaningful year-end awards for local competitors.
- Promote the sport of Performance Rallying.

CRS members will also be scored by their CRS class. If you are a CRS member, please review CRS classes in the CRS rulebook and send an email to [mpgibeault@gmail.com](mailto:mpgibeault@gmail.com) with your name, car number, and CRS class before the event.

***Hey, I'm in Colorado right now – why the heck would I want to join the California Rally Series?!***



*You ask a fair question, and here's a fair answer.*

***The California Rally Series (CRS) has outgrown its name – a bunch! – and Rally Colorado is now part of the CRS Rally Championship.***

*This means if you join the CRS prior to the start of the first stage at Rally Colorado, you can earn points towards the CRS Rally Championship, in addition to earning your ARA awards.*

*And it's cheap to join – just \$30 per year. The money helps all organizers in the series with equipment like clocks, radios, and signs, and trophies for the competitors at the end of the year.*

*The CRS is an overlay series, sanctioning-body-agnostic, featuring a collection of rallies in Oregon (OTR), Idaho, Colorado, Nevada, and, yes, even California (Prairie City Rallysprint and Gorman Ridge Rally). If you are thinking about competing in any of these events too, why not vie for a CRS championship while you're at it?*

***So why join the CRS? Because you're supporting grass-roots organizers, and earning points towards a championship.***

***It's easy: sign up on-line at***

<https://www.rallydata2.com/>

***Read more about us [www.californiarallyseries.com](http://www.californiarallyseries.com)***

***Rally on!***

***John Dillon  
CRS Director***

# SATURDAY Volunteer/Local Appreciation BBQ

Please attend the volunteer appreciation BBQ and thank all of the volunteers who make this sport possible. The entire Rally Colorado Organizing Committee thanks our volunteers for their dedication to the sport and we are grateful for them spending their weekend with us in the Town of Rangely. As a token of our appreciation and with the support of our sponsors, we welcome you to join us Saturday evening (after the stages have completed), **approximately at 7:00 pm** for a BBQ.

When you are getting your food and drinks, also please thank the fine folks serving you! They are with the Rio Blanco County Park and Recreation Department. Without their support we would not have access to the facilities we are using.

## SUNDAY Awards

Please stay and join us in celebrating another year running in Rio Blanco County!

We'll host an awards party at Elks Park Sunday (following impound *if any*) held in the west lot of Elks Park (fuel depot).

There will be a champagne spray and awards for ARA vehicle classes and top finishing CRS Driver and Co-Driver. See the CRS info above - to be eligible, you must submit your CRS class to [mpgibeault@gmail.com](mailto:mpgibeault@gmail.com) by start of the event.